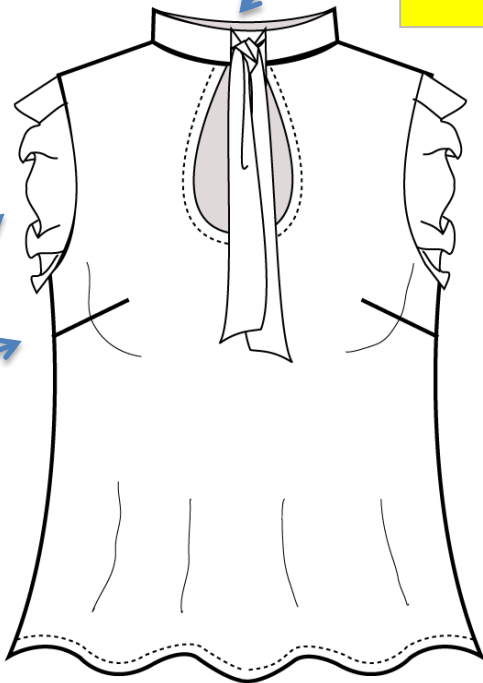


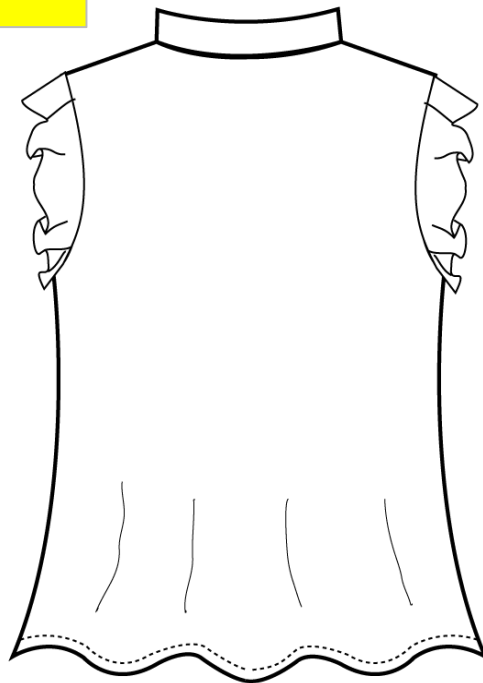
DETAILS

STYLE #:	SS1708	DIVISION:	SILK	STATUS:	PROTO
STYLE NAME:	TIE RUFFLE BLOUSE	CATEGORY:	TOPS	TECH:	0
DESCRIPTION:	TIE RUFFLE BLOUSE	FABRIC 1:	100% SILK	SIZE RANGE:	XS-XL
SEASON:	SPRING 17	FABRIC 2:		DATE CREATED:	6/16/2016
DELIVERY:		DESIGNER:	EVIN	DATE UPDATED:	

TEARDROP SHAPED KEYHOLE AT CENTER FRONT NECK IS FINISHED WITH 1/4" INNER BINDING. DOUBLE-LAYER COLLAR/NECK TIE.



1 1/2" LONG RUFFLE AT ARMHOLE.
 BUST DART.
 LOOSE FIT WITH 1/4" CLEAN FINISH HEM.



FABRIC: 14366-50
 POLKA DOT SILK
 COLORS: 18-4434
 MYKONOS BLUE
 17-1664 POPPY RED
 LAVENDER, BLACK

MAKE
 SAMPLE IN
 18-4434 TPG
 BLUE