

Design on a Dollar

Practical Strategies to Transform Nursing Home Environments

Registered Users

Not a Member? [Click here to register](#)

Welcome to Design on a Dollar

Changing the existing physical environment of nursing home in ways that improve residents' quality of life (QOL) and without major expenditures can happen. It simply requires a commitment to improve the living environment for all residents – not to simply become homelike but to become an actual home for the residents within the larger community of the overall facility. The ultimate goal of the journey is to create a home that supports “person centered living” - is not enough that the environment supports “person centered care”. (etc, etc, intro to the site)

[Home](#)[Self Assessment](#)[Virtual Tour](#)[Pilot Studies](#)[Additional Resources](#)

Self Assessment

In vehicula varius lorem, sed laoreet sapien interdum id. Praesent in metus est. Duis sed tincidunt quam. Integer ac metus vel enim posuere condimentum. Vestibulum porta libero in odio eleifend pharetra. Pellentesque ornare, enim ac laoreet porta, justo est luctus urna, venenatis gravida lacus eros vulputate libero. Fusce velit odio, dignissim semper mattis in, suscipit nec est. Nullam scelerisque faucibus dui in pharetra. Nulla sit amet libero sapien, a pretium ipsum. Fusce lobortis placerat mattis.

Nam pellentesque, turpis in scelerisque scelerisque, orci metus porta elit, vel molestie massa ligula nec nisl. Fusce in nisl lacus. Mauris vitae eros nec leo aliquet suscipit. Pellentesque habitant morbi tristique senectus et netus et malesuada fames ac turpis egestas. Etiam eget felis a eros elementum pellentesque. Nullam

This journey will illustrate 9 tasks that when accomplished will ultimately provide answers to the question: does our home support resident centered living and if not how can we improve our home.

The 9 tasks include:

[Establish a Culture Change Leadership Team.](#)

[Revisit or develop mission/value statement for your culture change journey.](#)

[Work as a team to complete the Artifacts of Culture Change Tool.](#)

[Form an environmental task force and other task forces, as needed, based on the identified domains](#)

[Revisit or develop mission/value statement.](#)

[Begin the discussion using the SWOT tool.](#)

[Complete the floor plan analysis for the environmental assessment.](#)

[Self-assessment of home private and shared spaces.](#)

[Resident, staff and visitor/volunteer questionnaires.](#)

[Define goals and time-line.](#)

Design on a Dollar

Practical Strategies to Transform Nursing Home Environments

[Home](#)[Self Assessment](#)[Virtual Tour](#)[Pilot Studies](#)[Additional Resources](#)

Choose an Area To Explore

Facility Entrance ▼

Reception Area

Flash callout from flowers

Corridors

Dining

Bathing/Shower Room Dining

Lounge (Family Room)

Shared Resident Room

Rehab Rooms

Resident Bathroom

Outdoor

Gathering Spaces

Staff Amenities

molestie vitae dolor. Curabitur in lorem vel erat convallis imperdiet a ac ante. Proin mauris risus, porta eu pellentesque eu, dictum ac quam. Vivamus ut mi enim. Phasellus ut tempus purus. Morbi aliquet vulputate vestibulum. Proin imperdiet.



Additional Tips and Resources




Design Notes:

Rooms/Areas will be accessible from a drop down List.

[Home](#)[Self Assessment](#)[Virtual Tour](#)[Pilot Studies](#)[Additional Resources](#)

Choose an Area To Explore

Facility Entrance 

Facility Entrance

Lorem ipsum dolor sit amet, consectetur adipiscing elit. Vestibulum tincidunt, magna vel dapibus bibendum, nibh diam bibendum lacus, eget varius sapien ipsum quis orci. Ut in nisl vel dui consequat dictum facilisis at lectus.

Ut mauris turpis, placerat sed suscipit sit amet, molestie vitae dolor. Curabitur in lorem vel erat convallis imperdiet a ac ante. Proin mauris risus, porta eu pellentesque eu, dictum ac quam. Vivamus ut mi enim. Phasellus ut tempus purus. Morbi aliquet vulputate vestibulum. Proin imperdiet auctor euismod. Ut nec tellus vel turpis lobortis lobortis. Sed lacinia ullamcorper lacus eu cursus.

Ut mauris turpis, placerat sed suscipit sit amet, molestie vitae dolor. Curabitur in lorem vel erat convallis imperdiet a ac ante. Proin mauris risus, porta eu pellentesque eu, dictum ac quam. Vivamus ut mi enim. Phasellus ut tempus purus. Morbi aliquet vulputate vestibulum. Proin imperdiet.



Additional Tips and Resources



Design Notes:

When a room/area is selected a general description and clickable photograph with hotspots will be on the page. Additional tips and resources that cannot be displayed from the interactive photo can be accessed through icons to represent items not visible from the photo

Design on a Dollar

Practical Strategies to Transform Nursing Home Environments

[Home](#)[Self Assessment](#)[Virtual Tour](#)[Pilot Studies](#)[Additional Resources](#)

Choose an Area To Explore

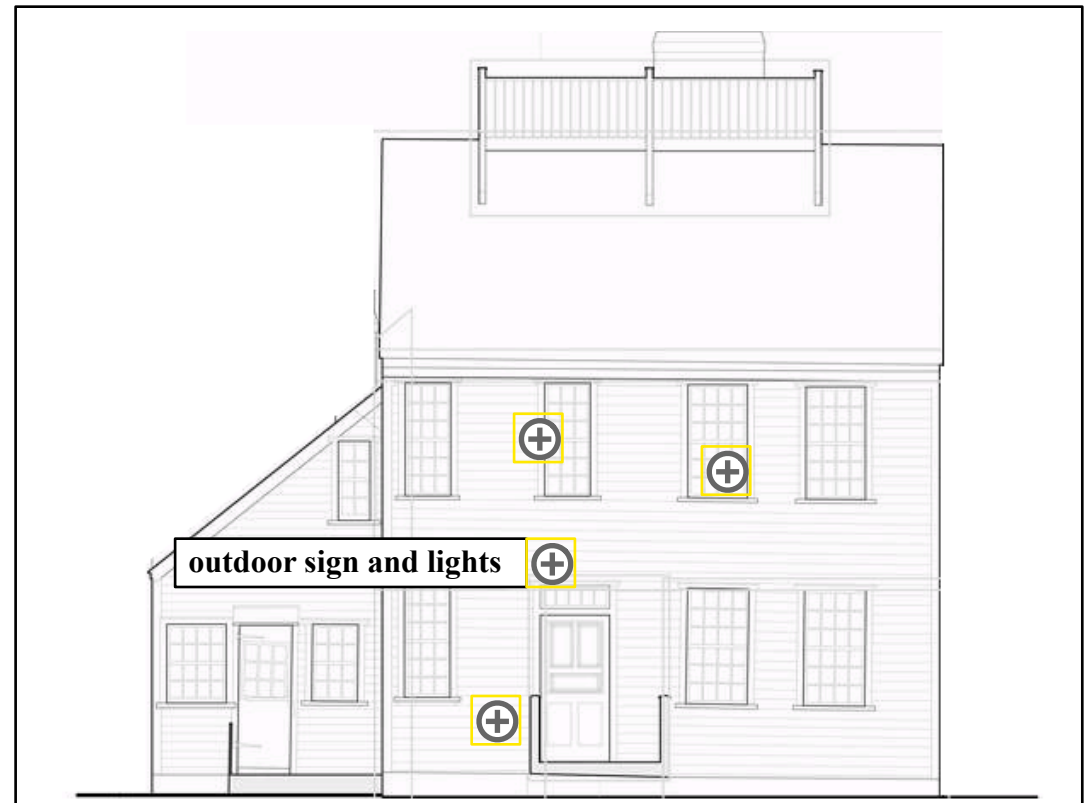
Facility Entrance 

Facility Entrance

Lorem ipsum dolor sit amet, consectetur adipiscing elit. Vestibulum tincidunt, magna vel dapibus bibendum, nibh diam bibendum lacus, eget varius sapien ipsum quis orci. Ut in nisl vel dui consequat dictum facilisis at lectus.

Ut mauris turpis, placerat sed suscipit sit amet, molestie vitae dolor. Curabitur in lorem vel erat convallis imperdiet a ac ante. Proin mauris risus, porta eu pellentesque eu, dictum ac quam. Vivamus ut mi enim. Phasellus ut tempus purus. Morbi aliquet vulputate vestibulum. Proin imperdiet auctor euismod. Ut nec tellus vel turpis lobortis lobortis. Sed lacinia ullamcorper lacus eu cursus.

Ut mauris turpis, placerat sed suscipit sit amet, molestie vitae dolor. Curabitur in lorem vel erat convallis imperdiet a ac ante. Proin mauris risus, porta eu pellentesque eu, dictum ac quam. Vivamus ut mi enim. Phasellus ut tempus purus. Morbi aliquet vulputate vestibulum. Proin imperdiet.



Additional Tips and Resources



Design Notes:

Each Hot spot will have a rollover function naming the area. Clicking on the hotspot will trigger a pop-over description.

Design on a Dollar

Practical Strategies to Transform Nursing Home Environments

[Home](#)[Self Assessment](#)[Virtual Tour](#)[Pilot Studies](#)[Additional Resources](#)

Choose an Area To Explore

Facility Entrance 

Facility Entrance

Lorem ipsum dolor sit amet, consectetur adipiscing elit. Vestibulum tincidunt, magna vel dapibus bibendum, nibh diam bibendum lacus, eget varius sapien ipsum quis orci. Ut in nisl vel dui consequat dictum facilisis at lectus.

Ut mauris turpis, placerat sed suscipit sit amet, molestie vitae dolor. Curabitur in lorem vel erat convallis imperdiet a ac ante. Proin mauris risus, porta eu pellentesque eu, dictum ac quam. Vivamus ut mi enim. Phasellus ut tempus purus. Morbi aliquet vulputate vestibulum. Proin imperdiet auctor euismod. Ut nec tellus vel turpis lobortis lobortis. Sed lacinia ullamcorper lacus eu cursus.

Ut mauris turpis, placerat sed suscipit sit amet, molestie vitae dolor. Curabitur in lorem vel erat convallis imperdiet a ac ante. Proin mauris risus, porta eu pellentesque eu, dictum ac quam. Vivamus ut mi enim. Phasellus ut tempus purus. Morbi aliquet vulputate vestibulum. Proin imperdiet.

Image(s)

Outdoor sign and lights

Ut mauris turpis, placerat sed suscipit sit amet, molestie vitae dolor. Curabitur in lorem vel erat convallis imperdiet a ac ante. Proin mauris risus, porta eu pellentesque eu, dictum ac quam. Vivamus ut mi enim.

Close Window 

Additional Tips and Resources



Design Notes:

Clicking a hotspot will trigger a pop-over. Each pop over will have a detailed description and picture(s)

Design on a Dollar

Practical Strategies to Transform Nursing Home Environments

[Home](#)[Self Assessment](#)[Virtual Tour](#)[Pilot Studies](#)[Additional Resources](#)

Pilot Studies

Before And After

- Facility entrance and reception area
- Gathering space
- Learning centers
- Staff amenities
- Corridors
- Dining area
- Rehab/short stay resident room
- Shared shower/tub room
- Resident room
- Resident bathroom
- Outdoor amenities
- Lounge space

Design Notes:

Design on a Dollar

Practical Strategies to Transform Nursing Home Environments

[Home](#)[Self Assessment](#)[Virtual Tour](#)[Pilot Studies](#)[Additional Resources](#)

Additional Resources

This webpage will link to all available resources (most in a pdf. Format). Examples are below:

[Practical Strategies to Transform Nursing Home Environments](#)

[Design on a Dollar Workbook](#)

[Artifacts on Culture Change Online](#)

[Environmental Task Force](#)

[SWOT Planning Questionnaire](#)

[Floor Plan Analysis](#)

[Self-Assessment of Physical Environment](#)

[Visitor Survey](#)

[Resident Survey](#)

[Staff Survey](#)

[List of Goals](#)

[Resident/Bath Checklists](#)

[Shared Spaces Checklists](#)

[Creating a New Space or Changing the Use of Space](#)

[Operational Variables Workbook](#)

[Leadership Resources](#)

[Low-Cost Examples](#)

Design Notes: