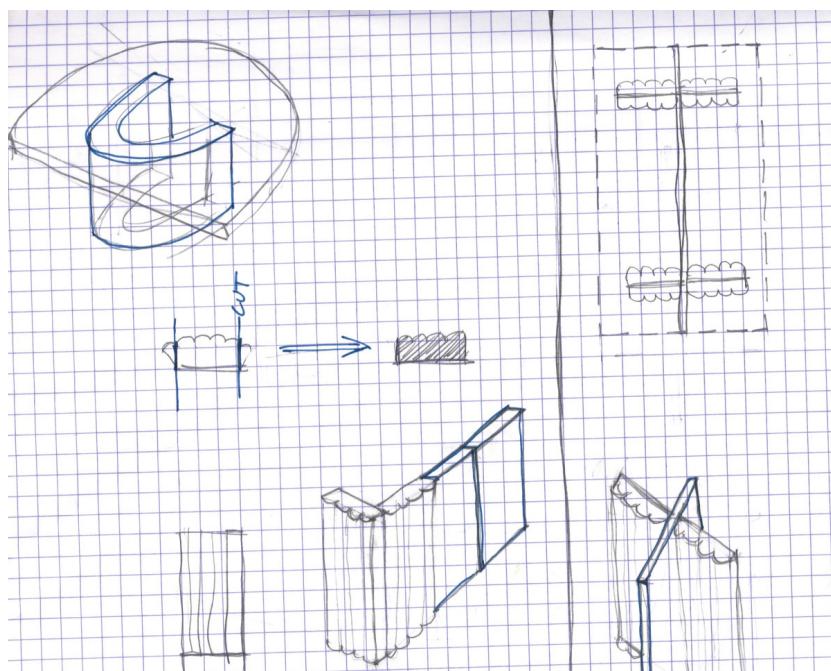
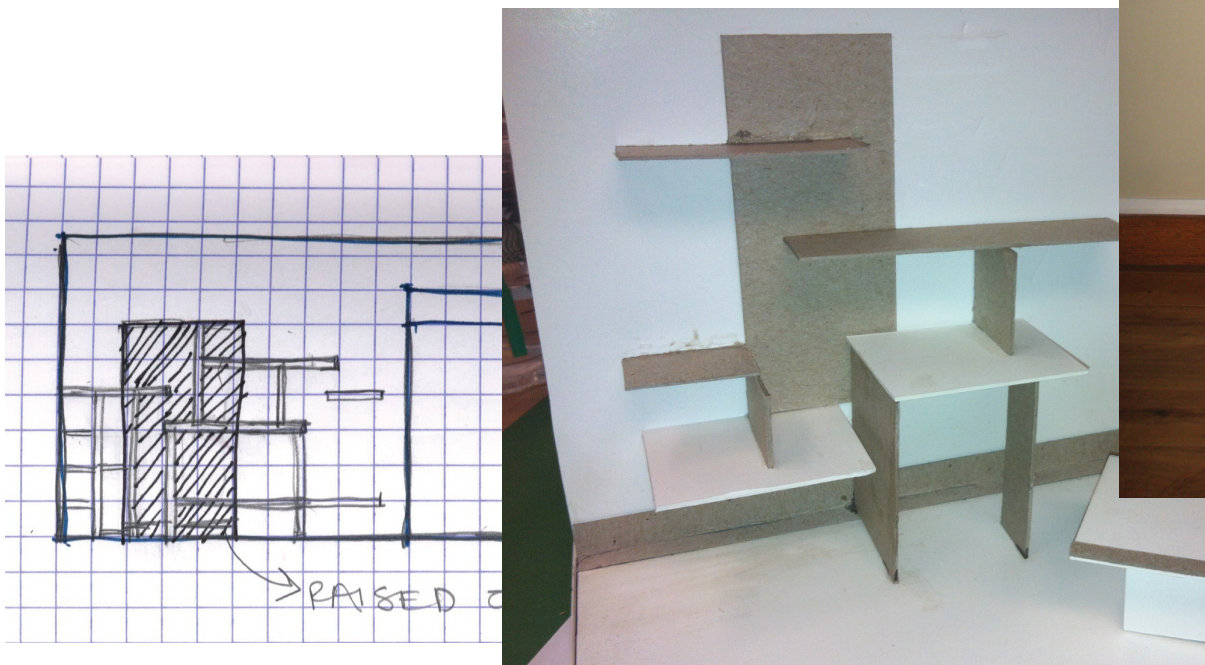
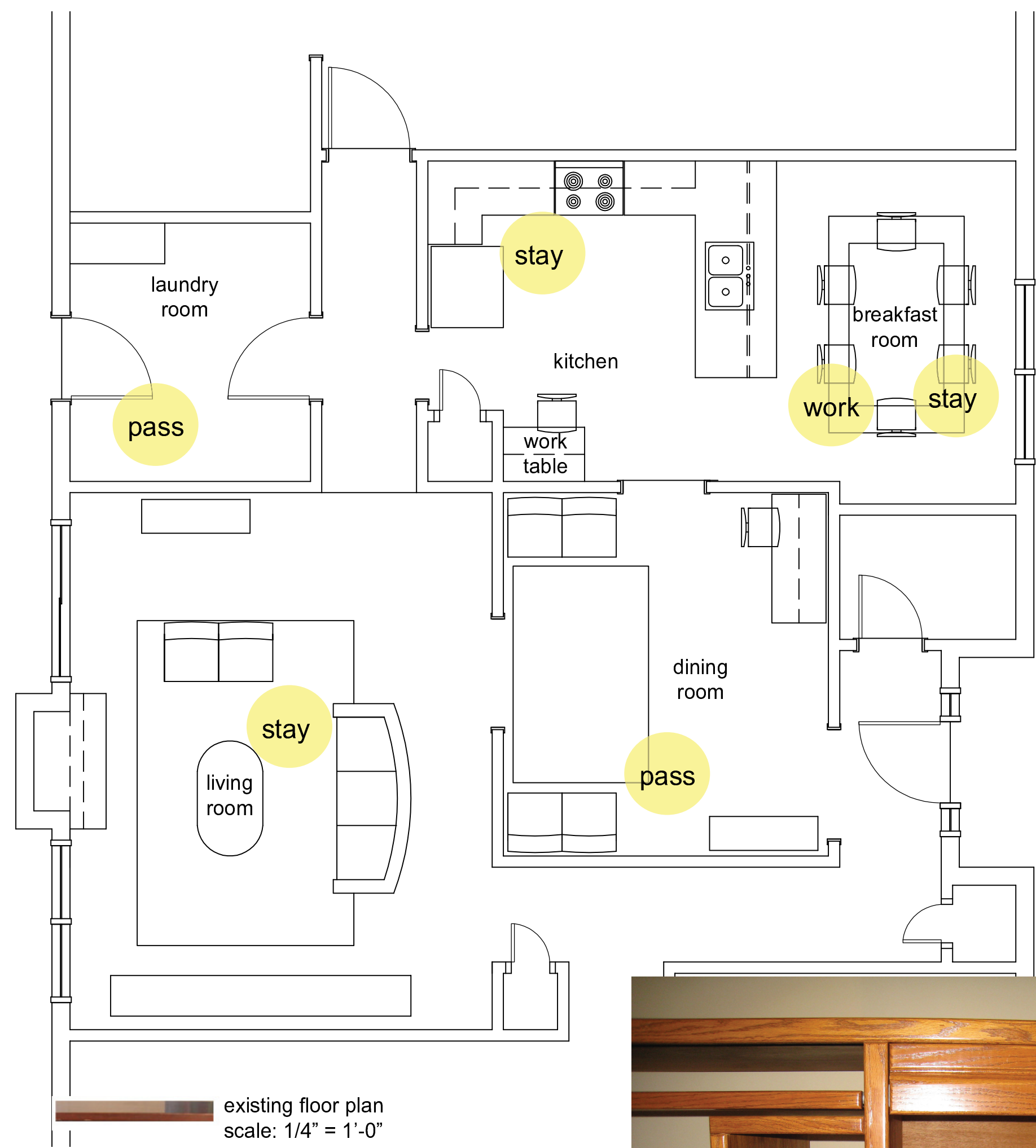
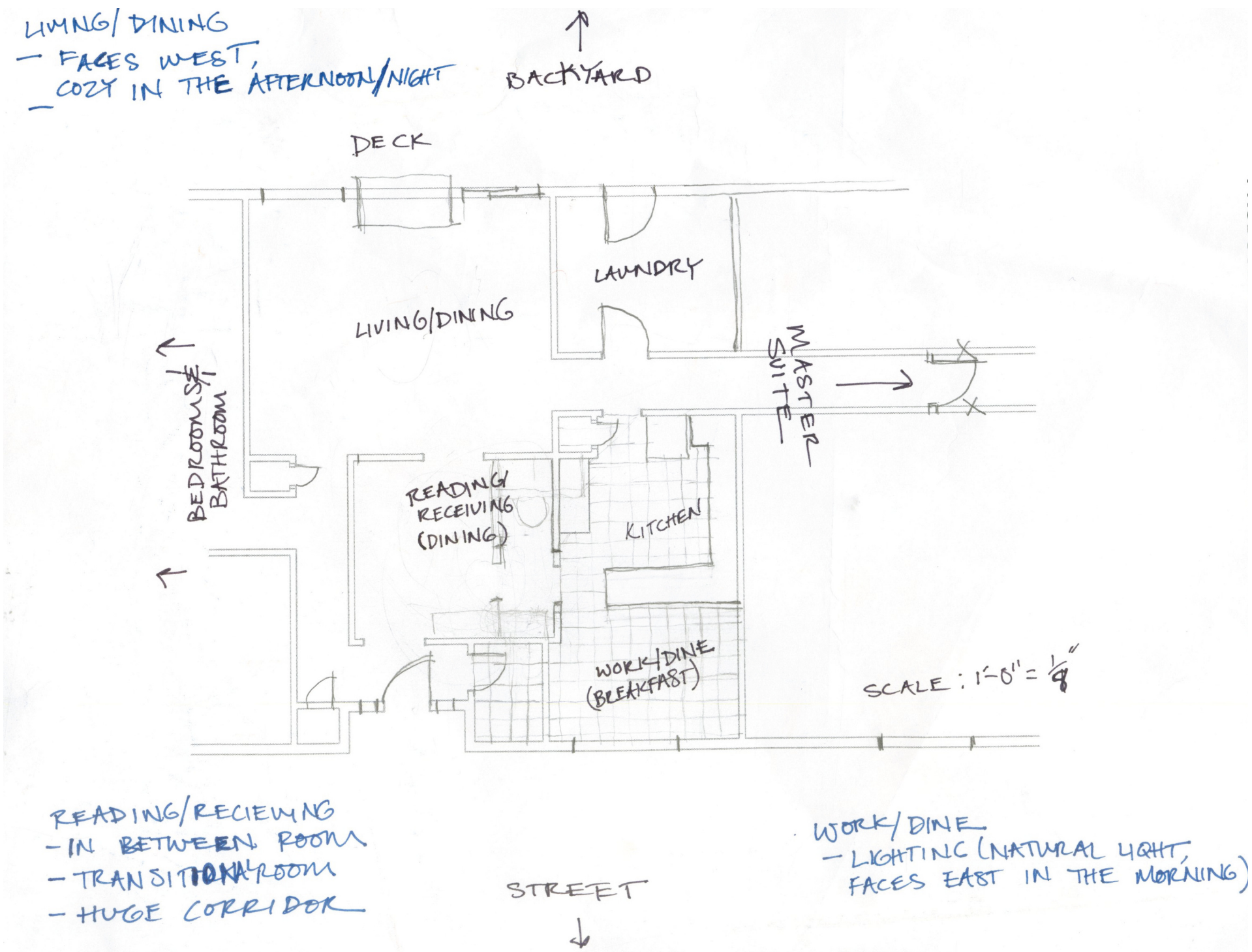




site analysis



a



original title: dining room
assigned title: computer room

_this central room is a place where guests are re-ceived, where one goes to pick up prints, and where books and office supplies are stored

_three openings prevent the room from being efficient space planned and cause the room to be a post-functional space



b



original title: breakfast room
assigned title: at table

_this room is attached to the kitchen, has excellent daylighting and is used very frequently as an office.

_this room can be a true functioning office and breakfast room.

c



original title: planning table
assigned title: planning table

_this desk is in the kitchen and meant to be a work desk but is virtually never used as one.

_this built-in is a post-functional piece due to the lack of storage space prohibiting efficient use.

d



original title: computer desk
assigned title: computer desk

_this desk was a family project which involved staining and assembling the pieces piece by piece. it always seems like an object assembled form many parts.

_this desk is in the "computer room" and for the past several years is selmdom used as a work desk. this desk is used solely for storage and is part of post-functional room plan.

e



original title: coffee table
assigned title: coffee table

_this is a dated piece over 20 years old . although it has uniquely milled ends, it has ceased to be aesthetically pleasing. it is always viewed a monolith, cumborsomely heavy object

_the uniquely milled barrel-like pieces of the coffee table can be reused to make something more aesthetically pleasing.