

Styles 22, 31, 41 & 44 Couplings for Vic-Ring® Adapter and Shouldered End Pipe

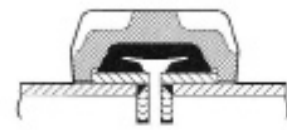
The following step-by-step procedures are designed as a guide for proper assembly of Victaulic couplings on Vic-Rings® or shouldered end pipe.



Vic-Ring and shouldered end pipe must be properly dimensioned in accordance with the latest Victaulic specifications for size and style of coupling being utilized.

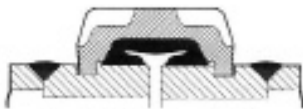
ALWAYS CHECK GASKET SUPPLIED TO BE CERTAIN IT IS SUITED FOR THE INTENDED SERVICE.

Styles 22, 41 & 44 couplings are supplied with Victaulic Grade “E” or “T” gaskets which are specially designed for water or oil services, respectively. Style 31 couplings are supplied with Victaulic Grades “M” and “S” FlushSeal gaskets which are specially designed for water or oil services, respectively.



Type A Vic-Ring Adapter

Maximum service life is dependent upon proper gasket selection and installation. Be sure to note gasket grade being supplied and make certain that it is suited for the intended service. The chart on page 2 provides general service recommendations for standard Victaulic gaskets. For more detailed information, consult the Victaulic Gasket Selection Guide or call Victaulic.



Type B Vic-Ring Adapter

Vic-Ring Installation

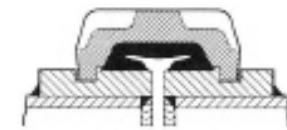
The fabricator/welder bears the full responsibility of ensuring that a quality weld capable of withstanding all thrust loads is made in accordance with appropriate American Welding Society (AWS) specifications and that applicable safety procedures are followed.

NOTE: All welds must be leak tight.



Type C Vic-Ring Adapter

NOTE: “W Max.” dimension can be found in chart at right.



Type D Vic-Ring Adapter



Type E Vic-Ring Adapter

MAXIMUM WELD O.D. TYPE “C” VIC-RING

Coupling Data			Coupling Data		
Size Inches	Style	W Max. +0”/-0.06”	Size Inches	Style	W Max. +0”/-0.06”
mm		mm	mm		mm
14 350	31	14.97 380.2	42 1050	41	44.81 1138.2
16 400	44	18.00 457.2	42 1050	44	45.81 1163.8
18 450	31	19.09 484.9	46 1175	41	47.88 1216.2
20 500	31	21.19 538.2	48 1225	41	51.03 1296.2
24 600	31	25.38 644.7	48 1225	44	52.19 1325.6
30 750	41	32.31 820.7	54 1375	41	57.44 1459.0
30 750	44	33.00 838.2	54 1375	44	58.63 1489.2
36 900	41	38.97 989.8	60 1500	41	63.63 1616.2
36 900	44	39.44 1001.8	60 1500	44	65.06 1652.5
38 975	41	40.13 1019.3	66 1675	41	69.63 1768.6

These Vic-Ring adapters are not to be considered as pipe reinforcement. If reinforcement is required, provision must be made by the designer.

For other ring specifications request 16.06.

VICTAULIC® IS AN ISO 9001 CERTIFIED COMPANY

Victaulic Company of America
Phone: 1-800-PICK-VIC (1-800-742-5842)
Fax: 610-250-8817
email: pickvic@victaulic.com

Victaulic Company of Canada
Phone: 416-675-5575
Fax: 416-675-5565
e-mail: viccanada@victaulic.com

Victaulic Europe
Phone: 32-9-381-1500
Fax: 32-9-380-4438
e-mail: viceuro@victaulic.be

Victaulic America Latina
Phone: 610-559-3300
Fax: 610-559-3608
e-mail: vical@victaulic.com

Victaulic Asia Pacific
Phone: 65-235-3035
Fax: 65-235-0535
e-mail: vicap@victaulic.com