

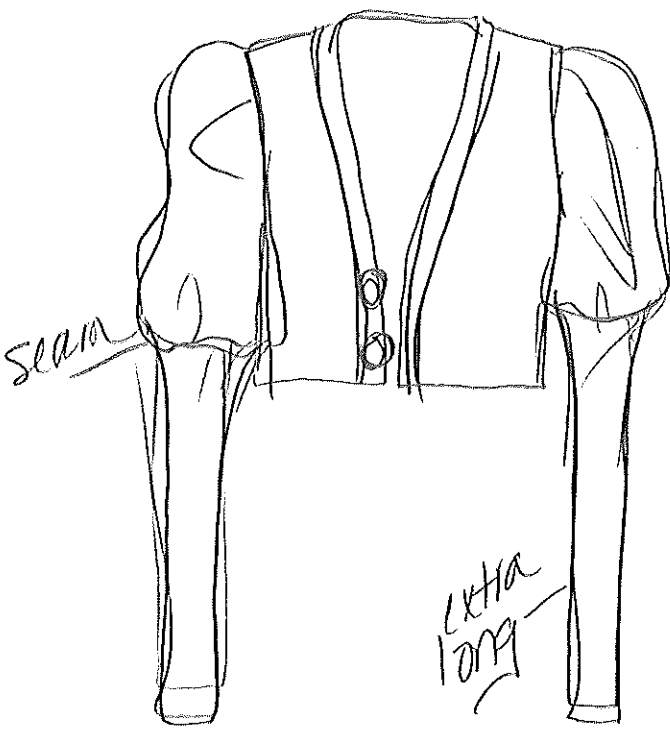
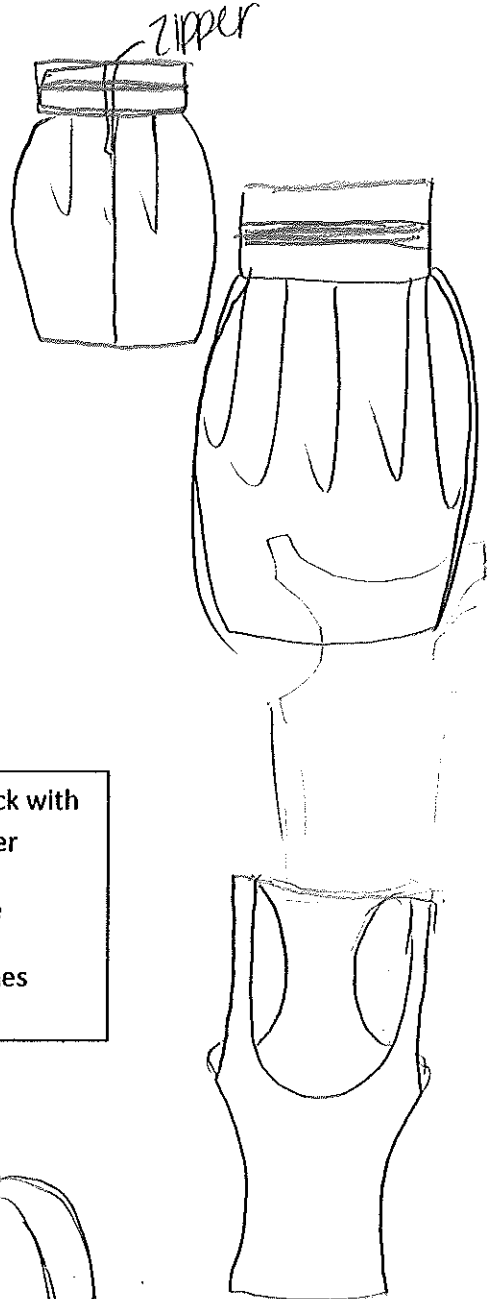


Jacket with oversized sleeves, but fitted the rest of the way down

Basic racer-back tank with low scoop neck

Full skirt through hips and then fitted towards bottom, large, gathered pockets, with three gathers at the waist

Sash attached to skirt, black with a gold ribbon/trim in center  
Belt about 6-7 inches wide  
Center trim about 3-4 inches wide



Cowl neck  
Short, wide sleeves with gather

Draped from seam at waist and also  
left seam of dress

Tight fitting lace undershirt with two gold  
buttons about 1-2 inches apart

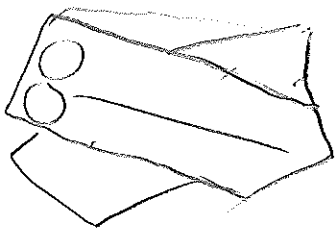
One side slightly shorter, from  
the drapes being pulled up into  
seam to waist/left side of dress

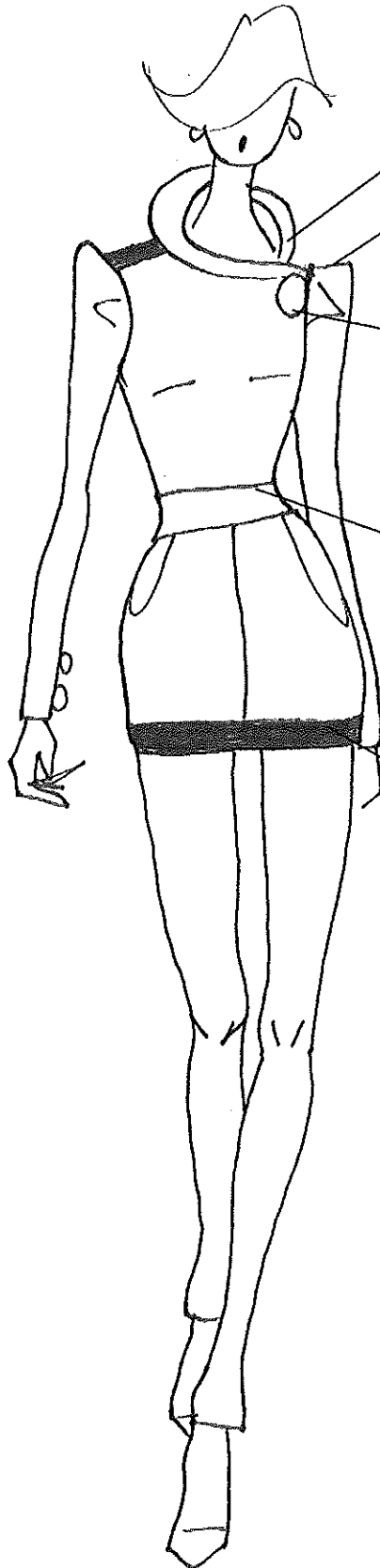
accessory  
belt

back  
zipper



belt-leather





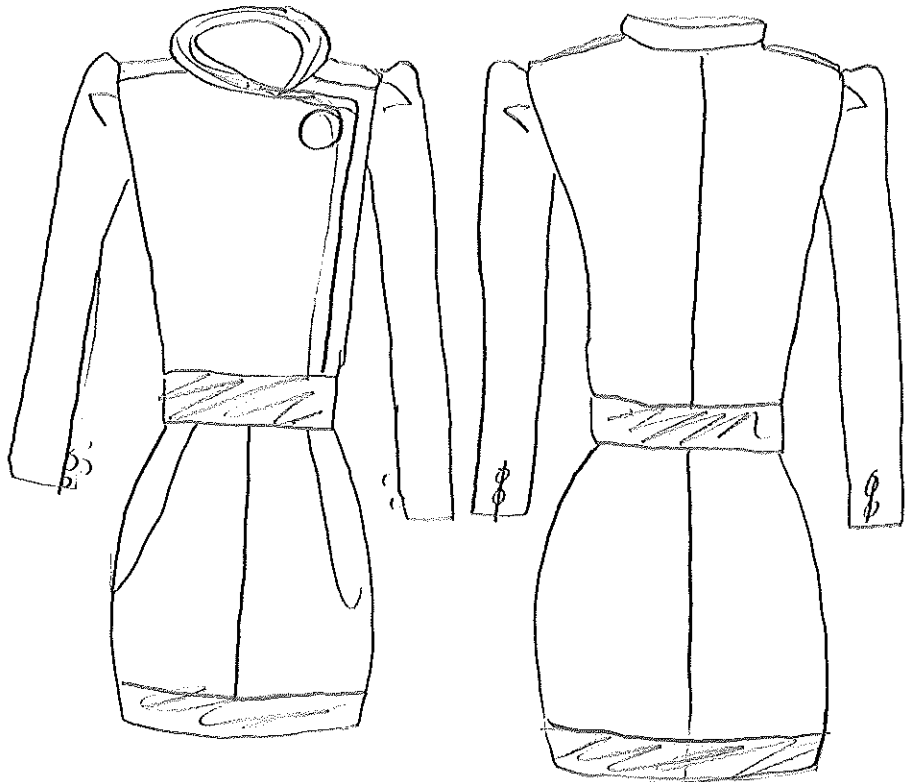
High rounded collar  
3-4 inch wide panel like pieces on top shoulders

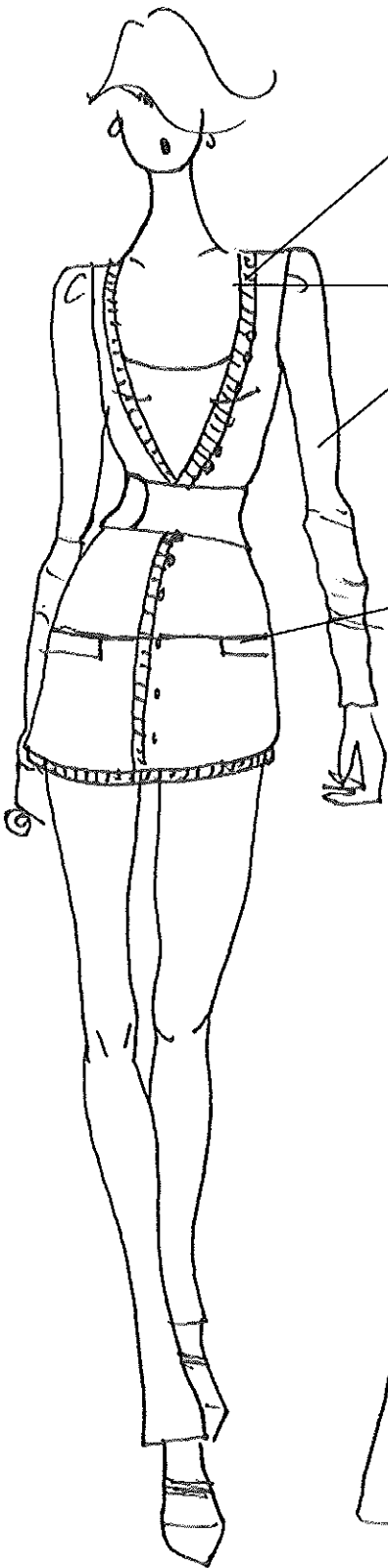
Sleeves with a gather to give it a "poofy" effect, and tailored the rest of the way down

One large button, and three smaller buttons hidden underneath to close up top portion

Waist sash, seam at waist, and seam going down middle  
Large pockets that look like gathers

Thick band on bottom, tighter fit then rest of piece  
Two buttons 1-2 inches apart on sleeve





Ribbed v-cardigan with a gather in the sleeve to give it a "poofy" effect

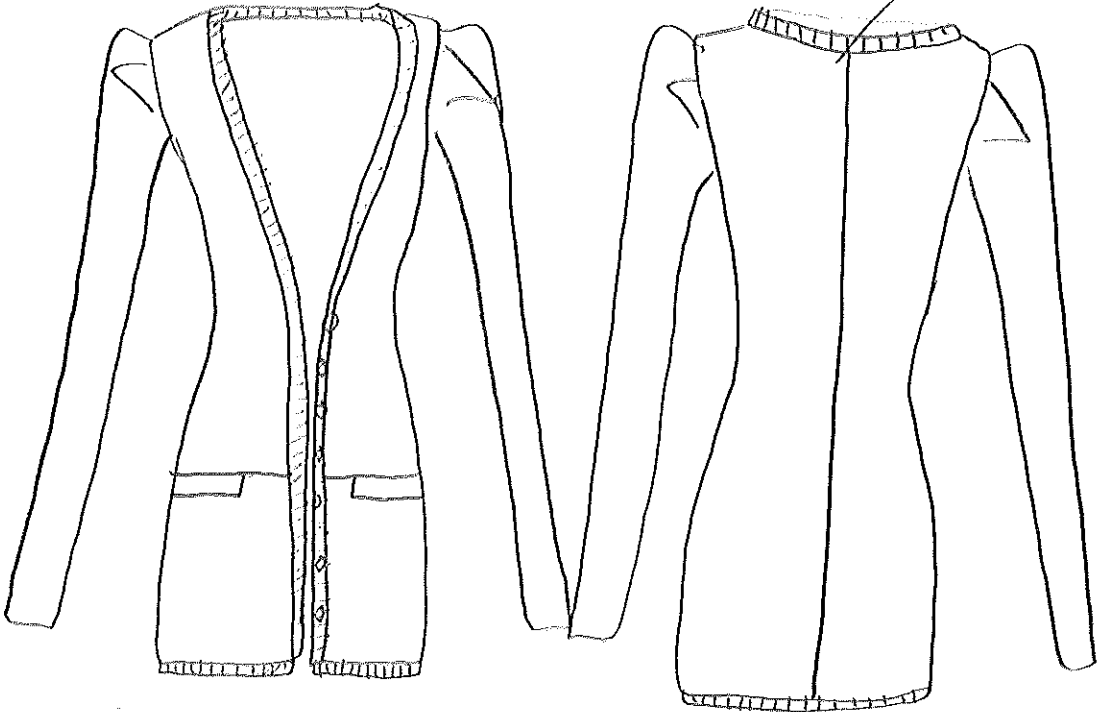
Small buttons same color as cardigan, 8-10, starting from v-point to the bottom of garment

Tight, fitted sleeves, extra long sleeves

Seam just below hips, with square welt pockets, pockets hidden inside, and button inside hidden

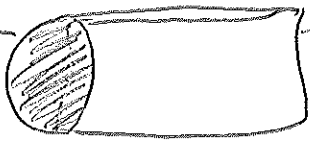
*pockets w/ a flap*

*single seam down back*



*belt-accessory*

*gold*



*brown leather*