

This twist on a traditional West Coast IPA adds new complexity, aroma and color to a great beer style. We start with a West Coast IPA backbone and then add darker roasted grains to give a slight roasted flavor combined with a soft mouthfeel. Added with this, are citrus and pine hop aromas and a color that is the color of Squid Ink.



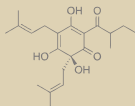
Brewed by:
Pacific Brewing Laboratory
www.pacbrewlab.com
 415.93.SQUID



IPA

TANTALIZING
 YET
 PLEASING

54 IBUS



PBL

Squid Ink

INDIA BLACK
 ALE

7% ALC./VOL.

16 FLOZ

1 PINT

37°46'38"N
 122°24'40"W

GOVERNMENT WARNING: (1) ACCORDING TO THE SURGEON GENERAL, WOMEN SHOULD NOT DRINK ALCOHOLIC BEVERAGES DURING PREGNANCY BECAUSE OF THE RISK OF BIRTH DEFECTS. (2) CONSUMPTION OF ALCOHOLIC BEVERAGES IMPAIRS YOUR ABILITY TO DRIVE A CAR OR OPERATE MACHINERY, AND MAY CAUSE HEALTH PROBLEMS.

