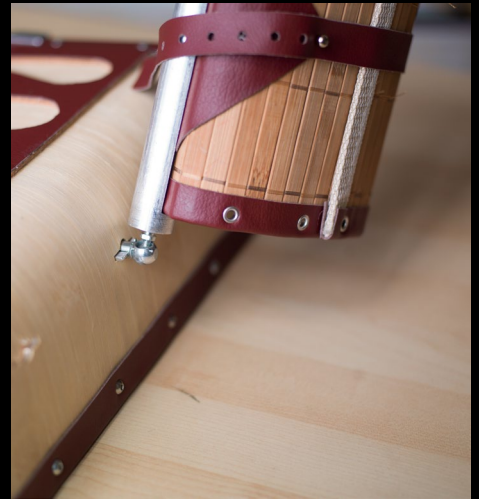




MEDICINE WHEEL

CITRINE CRYSTAL BED SCULPTED ONTO BLACK SUEDE.
TOTEM ANIMALS CARVED FROM FILLER..
ALL METAL FINISHES USING METALL-FX.
VARIOUS FEATHERS DECORATED USING SILVER PIGMENT AND
VARIOUS BEADS.



BEADING TABLE

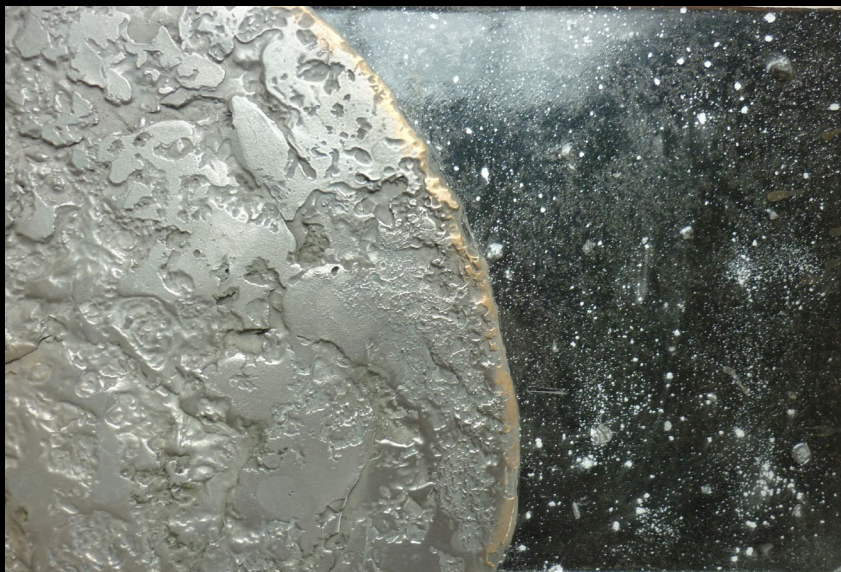
MAJOR PROJECT - A solution to the storage and organisational issues faced by those who enjoy beading as a hobby. Offering a high value and long lasting product.

MATERIALS: BAMBOO, E-LEATHER, CORK, ALUMINIUM, STEEL.
SUSTAINABLE MATERIALS & MINIMAL GLUE.

EASY DISASSEMBLY FOR REPAIR AND END OF LIFE.

MODULAR & PERSONALISABLE.

STORES ALL EQUIPMENT INSIDE ONCE FOLDED.



LIQUID METAL

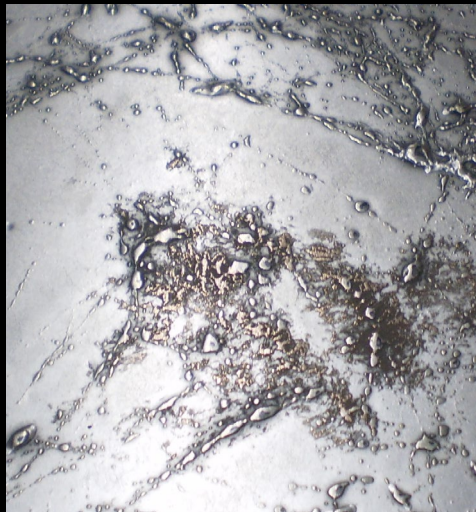
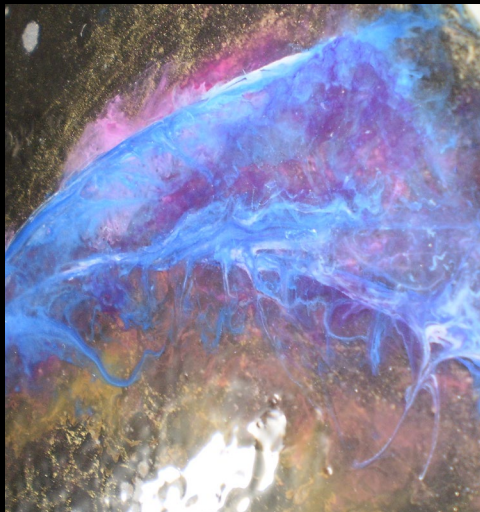
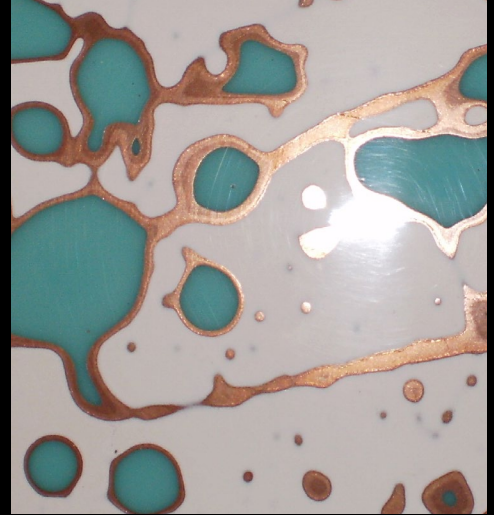
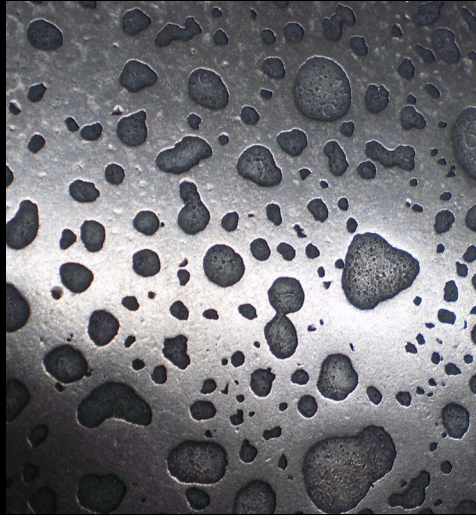
PRODUCTS AND ARTWORK MADE USING RESIN BASED METAL.

PHOTO FRAME : BRONZE TRIM STAMPED WITH ELEPHANTS.

EARRING : GEODE SLICE AND PHEASANT FEATHER, DIPPED AND JOINED WITH BRONZE.

VASE : GLASS BOTTLE SANDBLASTED, MASKED AND SPRAYED WITH COPPER.

CONCEPT ART : TEXTURED, MIXED METAL MOON ON A BLACK RESIN BACKGROUND (WITH PIGMENT DETAIL).



LIQUID METAL

VARIOUS FINISHES ACHIEVED USING RESINS, METALS AND PIGMENTS.

DIFFERENT TECHNIQUES USED TO ACHIEVE A LARGE RANGE OF TEXTURES.



FINE JEWELLERY

ALL PIECES WERE COLD WORKED - NO CASTING.
BRACELET : STERLING SILVER, INCLUDING HAND MADE CHAIN.
RING : GOLD, COPPER + SAPPHIRE.
NECKLACE : STERLING SILVER, AQUA AURA + DIAMONDS.



JEWELLERY COLLECTIONS

HONEYCOMBE TEXTURED BRASS AND STERLING SILVER,
WITH HAND CUT AND ENGRAVED BRASS WASP.
ANIMAL TOTEM NECKLACES - BEAR AND GOAT - WITH APA-
TITE BEADS.
LEAF TEXTURED STERLING SILVER, WITH HAND CAST RESIN
BEATLES FINISHED WITH A STAIN.