

# EXHAUST



## COMPETITION REPACK CARTRIDGE

- + The latest in muffler packing technology
- + Offers consistent packing density
- + Cuts installation time in half
- + 25% lighter than stock packing
- + Lasts 5-10 times longer than glass mat packing
- + Outer casing made from carbon-coated fiber, which remains intact for removal of used part
- + Made in the USA
- + \$18.95 - \$28.95

### OEM EXHAUSTS

MAKE/MODEL/YEAR	PART #	YAMAHA 4-STROKE	HONDA 4-STROKE	KAWASAKI 2-STROKE (CON'T)
<b>HONDA 4-STROKE</b>				
CR250F 04-05	1860-0056	YZ250F 01-05 MFRE1-1013	CR125 93-07 MFRD1-1025	KX250 03-07 MFRD1-1025
CR450F 02-03	1860-0091	YZ250F 06-07 1860-0033	CR125 93-07 MFRD1-1025	KX500 88-04 MFRD4-0014
CR450F 04-07	1860-0033	YZ400/426 98-02 1860-0095	CR250 92-07 MFRD1-1175	<b>KTM 2-STROKE</b>
<b>KAWASAKI 4-STROKE</b>		YZ450F 03-05 1860-0096	<b>KAWASAKI 2-STROKE</b>	50/65/85 ADV/SX 05-07 1860-0097
KX250F 04-07	1860-0050	YZ450F 06-07 1860-0091	KX60 86-04 MFRR5-0010	125/200/250/300/360/380 MFRD1-0016
KX450F 06-07	1860-0091	<b>HONDA 2-STROKE</b>	KX65 00-01 MFRR5-0008	EXC/MXC(98-05)
<b>KTM 4-STROKE</b>		CR80/85Expert 96-07 MFRD1-0875	KX65 02-07 1860-0090	125/200SX(98-05) MFRR2-011F
250SX-F 06-07	1860-0092	CR125 93-07 MFRD1-1025	KX80/85/100 91-07 MFRD1-1025	250SX(98-05) MFRR2-125F
400/450/520/525	MFRE1-0115	CR250 92-07 MFRD1-1175	KX125 96-01 MFRD1-1175	125/200/250/300 XC/SX 06-07 1860-0123
EXC/MXC/XC 00-07		<b>KAWASAKI 2-STROKE</b>	KX125 02-05 MFRD1-1025	200/250/300 XC-VV 06-07 1860-0124
400/450/520/525	1860-0055	KX60 86-04 MFRR5-0010	KX250 96-02 MFRD1-1175	<b>SUZUKI 2-STROKE</b>
SX 98-06		KX65 00-01 MFRR5-0008		RM180/85 89-07 MFRD1-0075
<b>SUZUKI 4-STROKE</b>		KX65 02-07 1860-0090		RM125 96-07 MFRD1-1025
RM-Z 250 04-07	1860-0050	KX80/85/100 91-07 MFRD1-1025		RM250 96-07 MFRD1-1175
RM-Z 450 05-07	1860-0091	KX125 96-01 MFRD1-1175		<b>YAMAHA 2-STROKE</b>
		KX125 02-05 MFRD1-1025		YZ280/85 93-07 MFRD1-1175
		KX250 96-02 MFRD1-1175		YZ125 96-07 MFRD1-1175
				YZ250 96-07 MFRD1-0135

### AFTERMARKET EXHAUST RE-PACK CARTRIDGE CHART

4-STROKE	LENGTH OF MUFFLER SHELL							
LENGTH OF MUFFLER SHELL	11"	13"	14"	15"	16"	17"	18"	20"
<b>BIG GUN</b>								
Race / Quiet / Utility	-	-	-	1860-0093	-	1860-0094	-	-
<b>BILLS PIPES</b>								
Oval	-	-	-	1860-0093	-	1860-0094	-	-
Round	-	-	1860-0095	-	1860-0096	1860-0054	-	-
<b>FMF</b>								
Factory 4.1	-	-	-	1860-0098	-	-	-	-
Ti4 (Original Round)	-	-	MFRR4-0014	1860-0093	MFRR4-0016	1860-0094	-	-
Power Core 4 (Round Core)	-	-	-	1860-0053	-	-	-	-
Power Core 4 (Square Core)	-	-	-	1860-0051	-	-	-	-
Q Series	MFRR3-0011	-	-	-	-	-	-	-
<b>GYTR</b>								
Oval Off Road Muffler	-	-	-	-	1860-0096	-	1860-0092	-
<b>PRO CIRCUIT</b>								
T4 (3.3" Canister)	-	-	MFRR3-0014	-	MFRR3-0016	-	-	-
T4,T4, 496 (4" Canister)	-	-	1860-0095	1860-0053	1860-0096	1860-0054	-	-
<b>WHITE BROTHERS</b>								
Aluminum / Carbon Pro	-	-	-	1860-0053	-	-	-	-
E-Series	-	MFRE1-0013	1860-0095	MFRE1-0015	1860-0096	1860-0054	-	1860-0055
E2	-	-	-	1860-0053	-	1860-0054	1860-0055	-
R4	-	MFRR4-0013	MFRR4-0014	1860-0093	MFRR4-0016	1860-0094	-	-

2-STROKE	LENGTH OF SILENCER SHELL						
LENGTH OF SILENCER SHELL	7.5"	9"	10"	11.5"	13"	14"	16"
<b>BILL'S PIPES</b>							
125 Race Silencer	-	MFRR1-0075	MFRR1-0009	-	-	-	-
250 Race Silencer	-	-	MFRR2-0009E	MFRR2-0010	MFRR2-0115	-	-
<b>DOMA</b>							
Race Silencers	-	MFRR2-0075E	MFRR2-0009E	MFRR2-0010	MFRR2-0115	-	-
<b>FMF</b>							
Power Core 2 / Titanium 2	-	MFRD1-0075	MFRD1-0875	MFRD1-1025	MFRD1-1175	MFRD1-0135	-
Turbine Core 2 / Q Two Stroke <sup>^</sup>	-	MFRD1-0075	MFRD1-0875	MFRD1-1025	MFRD1-1175	MFRD1-0135	-
<b>PRO CIRCUIT</b>							
R304 Std. / R304 Race	-	MFRR2-0075E	MFRR2-0009E	MFRR2-0010	MFRR2-0115	MFRR2-0013	-
296 Silencer <sup>^</sup>	-	MFRD1-0075	MFRD1-0875	MFRD1-1025	MFRD1-1175	MFRD1-0135	-

Part numbers given above are for unmodified aftermarket exhausts.

If the muffler has been modified from the original length and falls between lengths available on the chart order the next longest cartridge available for your muffler.

### <sup>^</sup>SPARK ARRESTOR REPACKS

When choosing a repack kit for a spark arrestor silencer, subtract 5.5" from the length of the muffler body for the actual packable length and order based on that length.

Example: An FMF Turbine Core 2 with a 14" long body will have an 8.5" packable length. Order the next longest length. Use this rule for Pro Circuit also.

## UNIVERSAL STAINLESS RE-PACK KIT

- + Louder exhaust does not mean more horsepower
- + Blown-out packing causes exhaust turbulence and increased backpressure, which reduces horsepower
- + Re-pack your silencer with this pro-quality, three layer packing system and restore the power you've blown out
- + Also great for getting in compliance with new sound laws
- + Kit contains 1/4" thick 60" x 20" glass mat, 7" x 20" stainless wool, 8" x 20" stainless mesh, twelve 3/16" rivets, and full instructions
- + Made in the USA
- + \$21.95

### UNIVERSAL STAINLESS RE-PACK KIT

PART#
1860-0037

## COMPETITION MUFFLER PACKING

- + The best low-weight, high-quality packing on the market
- + 25% lighter than stock packing
- + Quieter and longer lasting than fiberglass packing
- + Made in the USA
- + 250g - \$17.95
- + 500g - \$25.95

### COMPETITION MUFFLER PACKING

PACKING	PART#
250 GRAM	M702
500 GRAM	1860-0060

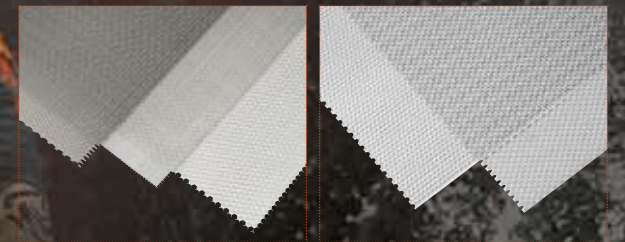


## FIBERGLASS MUFFLER PACKING

- + Repack blown-out silencers for quieter running and more power
- + Long filament fiberglass made especially for muffler packing
- + Measures 11" x 16", more than enough to repack virtually any 2-stroke silencer
- + Made in the USA
- + \$6.95

### FIBERGLASS MUFFLER PACKING

PART#
M701



## AIRFLOW MESH KIT

- + Customize your bike, quad, or sled
- + Use mesh to cover radiators, oil coolers, or bodywork vents
- + Add style and protection to your ride
- + Available in three styles; square, diamond, and honeycomb
- + Includes one 18" x 18" panel of aluminum mesh and full instructions
- + \$38.95

### AIRFLOW MESH KIT

SHAPE	PART#
SQUARE	1901-0121
DIAMOND	1901-0122
HONEYCOMB	1901-0123
ROUND	1901-0153
OVAL	1901-0154

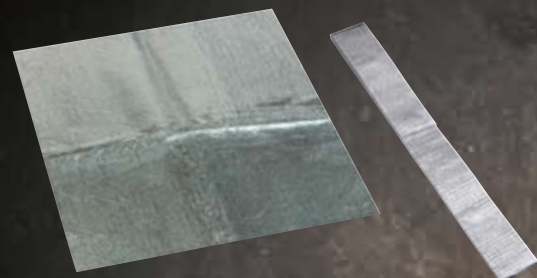


DAVID KNIGHT

- RACEWEAR
- YOUTH
- OUTERWEAR
- SIZING CHART
- BIKER ACCESSORIES
- PACKS & BAGS
- CASUALS
- CONTROLS
- BRAKING
- DRIVE
- BEARINGS
- ENGINE
- ELECTRICAL
- EXHAUST
- ARMOR
- WHEELS
- TRAIL PACKS
- RAMPS & STANDS
- CONTROLS
- BRAKING
- DRIVE
- SUSPENSION
- BEARINGS
- ENGINE
- ELECTRICAL
- EXHAUST
- ARMOR
- WHEELS
- RAMPS & COVERS
- TRAIL TOOLS
- PROVIDE



# EXHAUST



## HEAT SHIELD

- + Aluminized heat barrier with adhesive backing
- + Foil-coated ceramic cloth adheres to body panels to protect plastic or fiber glass from engine or exhaust heat
- + One 18" x 18" sheet provides 324 square inches of superior heat protection
- + Also available in a long narrow strip, sized 1.5" x 36"
- + Made in the USA
- + 18" X 18" M30051 \$22.95
- + 1.5" X 36" 1861-0153 \$8.95



## EXHAUST WRAP

- + Ceramic cloth wrap available in black and tan
- + Stable at temperatures up to 2000 degrees Fahrenheit
- + Insulates exhaust header pipes to protect you or your machine from intense heat
- + Generous size roll is enough to wrap one long header or critical areas on multiple exhausts
- + Made in the USA
- + 1"x50' Tan 1861-0339 \$39.95
- + 2" x 50' Tan M30050 \$64.95
- + 1"x50' Black 1861-0340 \$46.95
- + 2"x50' Black 1861-0341 \$69.95



## EXHAUST SPRINGS

- + Stainless steel construction gives superior strength and appearance
- + Swivel hook design eliminates binding, extending spring life
- + Available for most late-model 2-strokes and 4-stroke models
- + Sold in pairs
- + Made in the USA
- + \$11.95

### EXHAUST SPRINGS

MAKE/MODEL/YEAR	LOCATION	PART #	MAKE/MODEL/YEAR	LOCATION	PART #
<b>GAS GAS</b>					
Two-strokes 97-07	Pipe	M7715	<b>KTM</b>		
<b>HONDA</b>			SX65 98-07	Pipe	M7713
CR80R 86-01	Pipe	M7712		Silencer	M7714
CR80/85R 02-07	Pipe	M7718	Two-strokes 85-97	Pipe	M7715
CR125R 02-07	Pipe	M7712	Two-strokes 98-07	Pipe	M7714
CR250R 86-97	Pipe	M7711	Four-strokes 98-07	Header	M7713
CR250R 98-07	Pipe	M7712	Four-strokes 89-07	Silencer	M7715
CR500R 86-98	Pipe	M7712	<b>SUZUKI</b>		
<b>HUSQVARNA</b>			RM60/65 03-07	Pipe	M7714
Two-strokes 92-02	Pipe	M7716	RM80/85 89-07	Pipe	M7715
Four-strokes 91-02	Pipe	M7717	RM100 03-04	Pipe	M7714
Four-strokes 91-02	Header	M7717	RM125 84-91	Pipe	M7710
Four-strokes 04-05	Pipe	M7717	RM125 92-07	Pipe	M7715
Four-strokes 04-05	Header	M7717	RM250 88-91	Pipe	M7710
<b>KAWASAKI</b>			RM250 92-07	Pipe	M7715
KX60/65 85-07	Pipe	M7714	RMX250 88-91	Pipe	M7710
KX80/85/100 89-07	Pipe	M7714	RMX250 92-98	Pipe	M7715
KX125 87-89	Pipe	M7710	<b>TM</b>		
KX125 90-07	Pipe	M7714	80J 96-07	Pipe	M7716
KDX200/220 89-07	Pipe	M7710	125/250/300 91-07	Pipe	M7717
KX250/500 84-97	Pipe	M7710	<b>YAMAHA</b>		
KX250 98-00	Pipe	M7716	YZ80/85 85-07	Pipe	M7711
KX250 01-07	Pipe	M7717	YZ125/250 89-07	Pipe	M7711
KX500 98-04	Pipe	M7710	WR250 89-97	Pipe	M7711
			YZ250F/400F/426F/450F 98-07	Silencer	M7711

### EXHAUST SPRINGS

SPRING LENGTH	PART #
38mm	M7713
57mm	M7714
60mm	M7715
63mm	M7709
67mm	M7710
70mm	M7716
75mm	M7711
80mm	M7717
83mm	M7712
90mm	M7718
95mm	M7719
100mm	M7720

## EXHAUST TAPE

- + High-temperature Gore-Tex™ Teflon® exhaust tape with adhesive
- + Eliminates exhaust leaks between header pipe and cylinder head
- + Package includes two strips of tape, each measure .020" thick, 1" W and 8" L
- + \$16.95

EXHAUST TAPE	PART#
	M703

RYAN HUGHES

- RACEWEAR
- YOUTH
- OUTERWEAR
- WEIRD STUFF
- RIDER ACCESSORIES
- BACKS & BAGS
- CASUALS
- CONTROLS
- BRAKING
- DRIVE
- BEARINGS
- ENGINE
- ELECTRICAL
- EXHAUST
- ARMOR
- WHEELS
- TRAIL PACKS
- RAMPS & STANDS
- CONTROLS
- BRAKING
- DRIVE
- SUSPENSION
- ENGINE
- ELECTRICAL
- EXHAUST
- ARMOR
- WHEELS
- RAMPS & COVERS
- TRAIL TOOLS
- PHONE

## CARBON FIBER SKID AND GLIDE PLATE BY ELINE

- + Thick composite plates with many advantages over aluminum
- + The use of Kevlar™ gives our composite a longer fatigue life and greater tensile strength than aluminum
- + Composite plates are molded to the exact shape desired, making for a closer fit and more protective plate
- + Composite plates absorb vibration and do not amplify sounds like aluminum plates do
- + When hit hard, aluminum permanently deforms, bending frame tubes and slicing into water pumps
- + Composite plates will bounce back from hard hits and look great long after aluminum plates give up
- + Glide plates protect frame rails and the center engine case
- + Skid plates protect the side engine cases and the water pump in addition to the frame and the center case
- + Both styles are designed with a high front to keep mud from building up on the engine
- + Mounting hardware included
- + Made in the USA
- + Skid Plate - \$159.95
- + Glide Plate - \$129.95

### SKID AND GLIDE PLATES

MAKE/MODEL/YEAR	SKID PLATE	GLIDE PLATE	MAKE/MODEL/YEAR	SKID PLATE	GLIDE PLATE
<b>HONDA</b>			<b>KTM (CON'T)</b>		
CRF150R 06-07	0506-0325	-	250SX 05-07	0506-0341	0506-0342
CR250 02-07	0506-0326	-	250XCF/XCF-W 07	0506-0343	-
CRF250R 04-07	0506-0327	0506-0328	400/450/525 04-07 ALL	0506-0344	-
CRF250X 04-07	0506-0329	-	EXCEPT 07 SXF	-	-
CRF450R 05-07	0506-0330	0506-0331	450SX 07	0506-0345	0506-0346
CRF450X 05-07	0506-0332	-	<b>SUZUKI</b>		
<b>KAWASAKI</b>			RMZ250 04-06	0506-0334	0506-0335
KX250 05-07	0506-0333	-	RMZ250 07	0506-0347	0506-0348
KX250F 06-07	0506-0334	0506-0335	DRZ400 00-07	0506-0336	-
KLX400 03-05	0506-0336	-	RMZ450 06-07	0506-0349	0506-0350
KX450F 06-07	0506-0337	0506-0338	<b>YAMAHA</b>		
KLX450R 08	0506-0337	0506-0338	YZ250 05-07	0506-0351	-
<b>KTM</b>			YZ/VZR250F 06-07	0506-0352	0506-0353
125/200 ALL 98-07	0506-0339	-	YZ/VZR450F 06-07	0506-0358	0506-0359
250/300 TWO STROKE	0506-0340	-	<small>*Glide plate not shown</small>		
ALL 04-07	-	-			







# WHEELS



<b>LOCK CHOCK</b>	<b>PART#</b>
3.5"	3911-0023

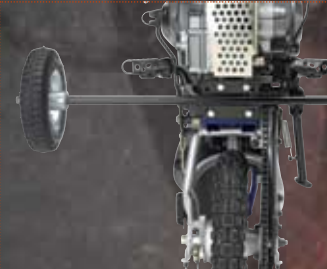
<b>LOCK CHOCK</b>	<b>PART#</b>
5.5"	3911-0024

## TRAINING WHEELS

- + Teach the basics of braking, throttle control, and steering
- + Provide a more stable ride until understanding of the fundamentals is reached
- + Mid-mounted solid axle provides a strong platform for learning
- + Pneumatic, rubber wheels with ball bearing hubs stand up to generations of use
- + Simple mounting system keeps footpegs in the stock location
- + No clamping to the frame
- + Built to last in the USA
- + Replacement wheel and tire assembly (includes bearings) 9501-0023 \$24.95
- + \$119.95

FAILURE TO USE THIS APPARATUS CORRECTLY CAN RESULT IN SERIOUS INJURY OR DEATH. ONLY USE MOOSE RACING TRAINING WHEELS FOR THE INTENDED TRAINING PURPOSE. THIS IS ONLY A TRAINING AID!!!!

TRAINING WHEELS	
MAKE/MODEL/YEAR	PART #
<b>HONDA</b>	
CRF/XR50 00-07	9501-0012 <sup>A</sup>
<b>KAWASAKI</b>	
KDX50 03-06	9501-0014
<b>KTM</b>	
50 MINI 02-06	9501-0022
<b>SUZUKI</b>	
JR50 04-06	9501-0014
<b>YAMAHA</b>	
PW50 90-07	9501-0013
TTR50 06-07	9501-0017 <sup>A</sup>



SHOWN MOUNTED TO TTR50

## ICE TIRE WRAP

- + Keep your ice screws sharp with the burliest tire wrap on the market
- + Outer shell constructed from heavy-duty 1200/600 PVC coated rip-stop nylon
- + Interior core is 4" wide webbing thick enough to prevent metal studs from losing their edge
- + Side-walls constructed with an elastic cord to create a formed fit around tire
- + Metal grommets and heavy-duty hooks for easy and secure closure
- + Universal fitment for all motorcycle ice tires 5" wide up to 21" diameter
- + \$32.95 each

<b>ICE TIRE WRAP</b>	<b>PART#</b>
	M4571

## LOCK CHOCK

- + Chock includes a security pin that can be used to lock your bike to the chock (lock not included)
- + Flush mount T-base fits all trailers and truck beds with no hassle of aligning separate cleats
- + Chock mounts to T-base at 4 points for strength and stability
- + Ultra durable powder coat finish
- + Large models fit street/supersmoto applications and with clearance for all disc brakes
- + All mounting hardware and instructions included
- + Made in the USA
- + 3.5" 3911-0023 \$74.95
- + 5.5" 3911-0024 \$89.95
- + 6.5" 3911-0025 \$89.95 NOT SHOWN



## LOCK CHOCK SEPARATES

- + Prepare your trailer with T-bases and use the right chock for the day's haul
- + All chocks are interchangeable on the same T-base plate
- + Made in the USA
- + 3.5" Chock and security pin ONLY 3911-0028 \$49.95
- + 5.5" Chock and security pin ONLY 3911-0029 \$64.95
- + 6.5" Chock and security pin ONLY 3911-0030 \$64.95
- + T-base plate and mounting hardware ONLY 3911-0027 \$29.95



## HEAVY-DUTY TUBES

- + Heavy-duty tubes made specifically for off-road and motocross
- + German made, these are the sturdiest, highest quality tubes on the market
- + 3mm thick natural rubber construction helps resist pinch flats
- + \$10.95 - \$20.95

HEAVY-DUTY TUBES		HEAVY-DUTY TUBES	
SIZE	PART #	SIZE	PART #
<b>FRONT</b>		<b>REAR</b>	
2.50/2.75-10	3810-0013	2.50/2.75-10	3810-0013
2.50-3.00-14	M750-04	3.00-3.50-12	M750-03
2.50-2.75-17	M750-08	3.50-4.10-14	M750-05
2.50-2.75-19	M750-16	3.00-3.50-16	M750-07
90/90-80/100-21	M800-10	100/100-120/100-18	M800-20
		100/90-110/90-19	M800-30

- RACEWEAR
- YOUTH
- OUTERWEAR
- SIZING CHART
- BIKER ACCESSORIES
- BAGS & BAGS
- CASUALS
- CONTROLS
- BRACING
- DRIVE
- BEARINGS
- ENGINE
- ELECTRICAL
- EXHAUST
- ARMOR
- WHEELS
- TRAIL PACK
- RAMPS & STANDS
- CONTROLS
- BRACING
- DRIVE
- SUSPENSION
- BEARINGS
- ENGINE
- ELECTRICAL
- EXHAUST
- ARMOR
- WHEELS
- RAMPS & COVERS
- TRAIL TOOLS
- PROMO



# TRAIL PACKS

Trail Packs are updated for 2008. We have upgraded the main material to a snag resistant polyester with water resistant coating. We upgraded to a stronger type of thread for all the stitching. We have added double stitching to more seams, and added triple stitching to critical areas. We also upgraded to higher quality, more expensive zippers. After all these upgrades, the measurements and pricing remain the same.



## SPARE TUBE FENDER PACK

- + Perfect size for a 21" Moose Racing tube, tire spoons and tire inflator kit
- + Uniquely designed mounting hooks attach quickly and securely to any front fender
- + Stays put even in the worst conditions
- + Pack can also be attached to rear fender
- + Filled pack measures approx. 11.5" L x 6.5" W x 5" H
- + \$19.95

<b>SPARE TUBE FENDER PACK</b>	<b>PART#</b>
3510-0010	



## DUAL SPORT FENDER PACK

- + Same design as rally-tested Moose Racing spare tube fender pack
- + Pack area enlarged for added storage
- + Perfect size for Moose Racing tube, rain gear, tools or accessories
- + Mounting hooks allow you to install or remove in seconds
- + Filled pack measures approx. 12.5" L x 7.5" W x 5.5" H
- + \$24.95

<b>DUAL SPORT FENDER PACK</b>	<b>PART#</b>
3510-0011	



## REAR FENDER PACK

- + If you don't like fanny packs, try our rear fender pack
- + Zipper closure with wide hook-and-loop flap for extra dirt and rain protection
- + Mounts to rear fender via four mounting holes in bottom
- + Reinforced sides and bottom add shape and durability
- + Inner cinch strap keeps items from moving around
- + Measures 9" L x 6" W x 5" H
- + \$34.95

<b>REAR FENDER PACK</b>	<b>PART#</b>
3510-0007	



## NUMBER PLATE TRAIL PACK

- + Mounts above headlight or on front of number plate without headlight
- + Perfect size for Moose Racing rain gear or food
- + Used by course workers for carrying arrows and staplers
- + Convenient way to add extra carrying capacity
- + Measures approximately 12" L x 7" W x 3" D
- + \$34.95

<b>NUMBER PLATE TRAIL PACK</b>	<b>PART#</b>
3510-0009	

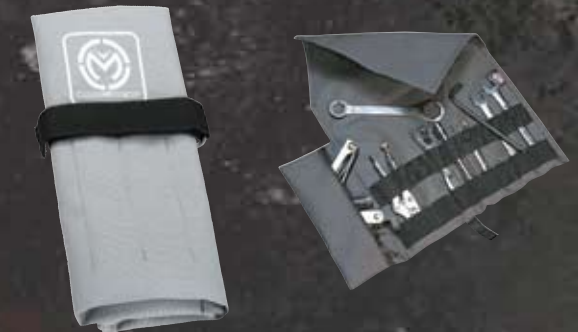


## FENDER MOUNT TOOL PACK

- + Mounts securely to fender with self contained bolt-on mounting plate
- + Twin compression straps hold pack together
- + Keeps tools organized and clean
- + Nylon straps allow quick and easy access
- + Tools sold separately
- + Closed measures 9-1/2" L x 6-3/4" W x 1" H
- + \$29.95

<b>FENDER MOUNT TOOL PACK</b>	<b>PART#</b>
3510-0008	

DICK BURLERSON



## TOOL WRAP

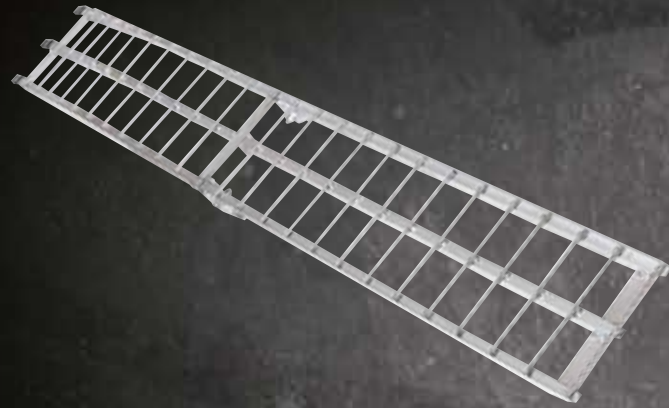
- + An easy way to organize and carry tools and supplies
- + 1000 denier Cordura material resists puncturing or ripping
- + Includes attached zipper bag for small odds and ends
- + Collapsed with tools, measures approx. 9.5" L x 4.5" W x 2.5" H
- + Convenient size is small enough to fit in fanny pack or rear fender pack
- + Contents not included
- + \$14.95

<b>TOOL WRAP</b>	<b>PART#</b>
M1200	



- RACEWEAR
- YOUTH
- OUTERWEAR
- SIZING CHART
- RIDER ACCESSORIES
- PACKS & BAGS
- CASUALS
- CONTROLS
- BRACING
- DRIVE
- BEARINGS
- ENGINE
- ELECTRICAL
- EXHAUST
- ARMOR
- WHEELS
- TRAIL PACKS
- RAMPS & STANDS
- CONTROLS
- BRACING
- DRIVE
- SUSPENSION
- BEARINGS
- ENGINE
- ELECTRICAL
- EXHAUST
- ARMOR
- WHEELS
- RAMPS & STANDS
- TRAIL TOOLS
- BRACING

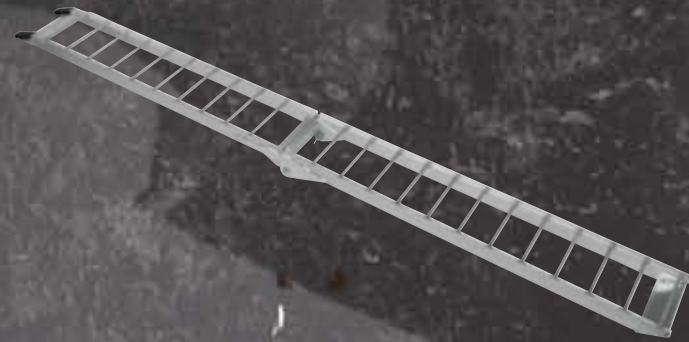
# RAMPS / STANDS



## ARCHED ALUMINUM FOLDING RAMP

- + Durable and lightweight ramp is weather resistant and comes with a sturdy aluminum frame
- + E-Z grip rubber truck rests and nylon safety straps
- + Weighs only 13 lbs.
- + Measures 12" W X 90" L
- + Maximum load capacity of 600 lbs.
- + WARNING: DO NOT RIDE BIKE ON RAMP AT ANY TIME
- + \$99.95

ARCHED ALUMINUM FOLDING RAMP	PART#
	3910-0017



## ALUMINUM STRAIGHT FOLDING RAMP

- + Exclusive design folds flat for easy storage and transportation
- + Build specifically for loading off-road motorcycles
- + Made from durable and lightweight 6063 aluminum
- + Rubber coated ramp fingers help keep ramp from slipping
- + Weighs only 9.5 lbs.
- + Measures 8" W X 84" L
- + Maximum load capacity of 400 lbs.
- + WARNING: DO NOT RIDE BIKE ON RAMP AT ANY TIME
- + \$79.95

ALUMINUM STRAIGHT FOLDING RAMP	PART#
	3910-0022



## SIX FOOT RAMP

- + Aircraft aluminum construction
- + Dimple holes for maximum traction
- + Rubber coated steel tongue
- + Rubber coated stop-pin eliminates slipping and scratching on tailgate
- + 6' L X 6" W
- + Weighs only 8 lbs.
- + 300 lb. maximum load capacity
- + Available in 4 packs only. See your Parts Unlimited dealer for single purchase.
- + \$49.95 (each)

WARNING: Do not ride motorcycles or ATV's on ramps at anytime

ALUMINUM RAMPS	
DESCRIPTION	PART #
Aluminum Ramps (4 pack)	3910-0021



## T STAND

- + Sized per application, the axle pin of these stands will fit snugly in your rear axle
- + T-stands don't fall off when you move your bike like triangle stands do
- + No removable or changeable pieces to fall out and get lost
- + Made from steel and given a very durable powder coat finish
- + Heavy-duty stand will not fall over when you wash your bike, or stand it on soft ground
- + Made in the USA
- + \$19.95

T STAND		
MODEL/COLOR	PIN DIAMETER	PART #
KTM - GREY	11.5mm	4101-0089
HONDA / KAW - RED	17.5mm	4101-0090
YAMAHA / SUZ - BLACK	14.5mm	4101-0091



## ALUMINUM BIKE STAND

- + Constructed from 6061 T4 aluminum
- + Exclusive Moose Racing anti-slip rubber platform pad
- + Extra thick aluminum platform with reinforced side panels for durability
- + Large oil drain hole
- + Removable tray for holding tools, parts, or oil catch pan
- + Arched base offers excellent stability on uneven surfaces
- + 17" high, top 10" x 11"
- + \$69.95

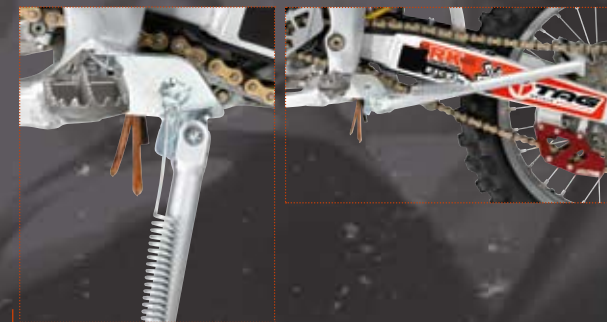
ALUMINUM BIKE STAND	
COLOR	PART #
SILVER ANODIZED	4101-0100
BLACK	4101-0101



## FUNDAMENTAL BIKE STAND

- + Strong aluminum bike stand with no fancy stuff
- + Does everything an expensive stand does for half the cost
- + Includes thick rubber pad, 4" drain hole, and welded in tool tray
- + Plates welded to the bottom of legs to stop sinking in soft dirt
- + Extensively tested by Moose Racing
- + 17" tall, 10"x10" top, 14.5" base
- + \$44.95

FUNDAMENTAL BIKE STAND	
COLOR	PART #
BLACK	4101-0114
SILVER	4101-0115



## BOLT-ON KICKSTANDS

- + Powder coated steel shaft and sturdy 1/4" steel mounting bracket make a lightweight, yet heavy duty stand
- + Perfect for those unexpected rest stops along the trail
- + Easy installation and removal with only two bolts (included when necessary)
- + High tension steel spring
- + Made in the USA
- + Replacement spring for all kickstands Part # 0510-0080 \$5.95
- + \$99.95

BOLT-ON KICK STANDS 2			
MAKE/MODEL/YEAR	PART #	MAKE/MODEL/YEAR	PART #
<b>HONDA</b>		<b>SUZUKI</b>	
CR125 02-07	0510-0058	RMZ450 05-07	0510-0059
CR250 02-07	0510-0058	RMZ250 07	0510-0059
CRF250R 04-07	0510-0058	<b>YAMAHA</b>	
CRF450R 02-07	0510-0058	YZ125 05-06	0510-0057
<b>KAWASAKI</b>		YZ250 05-06	0510-0057
KX250F 06-07	0510-0058	YZ250F 06-07	0510-0057
KX450F 06-07	0510-0058	YZ450F 06-07	0510-0057
KLX450R 08	0510-0058		



## CLAMP-ON SIDE STANDS

- + Constructed from 4130 Chrome-moly steel, for strength and light-weight
- + Heavy-duty spring will keep the stand from coming down in aggressive riding environments
- + The total weight of the unit is 1.5 lbs
- + Attaches firmly and easily to the swingarm, no drilling required
- + Where applicable, stand has tapered mounting bracket to fit swingarm profile perfectly
- + Strong enough to pivot bike on stand to adjust or lubricate chain
- + Replacement spring for all kickstands Part # 0510-0080 \$5.95
- + \$99.95

CLAMP-ON SIDE STANDS 3			
MAKE/MODEL/YEAR	PART #	MAKE/MODEL/YEAR	PART #
<b>HONDA</b>		<b>KAWASAKI (CON'T)</b>	
CR80/85R 96-07	M019-7	KX250F 04-05	M019-13
CR80/85E 96-07	M019-8	KX500 88-02	M019-11
CR125/250R 88-94	M019-1	<b>SUZUKI</b>	
CR125R 95-97	M019-9	RM125/250 95-01	M019-5
CR125R 98-99	M019-2	RM125/250 02-07	M019-11
CR125/250/CRF250/450R 00-07	M019-3	RMZ250 04-06	M019-13
CR250R 95-96	M019-9	<b>YAMAHA</b>	
CR250R 97-99	M019-2	YZ80/85 93-07	M019-10
CR500R 87-01	M019-1	YZ125/250 96-01	M019-4
<b>KAWASAKI</b>		YZ125/250 02-04	M019-12
KX125 90-96	M019-1	YZ250F/400F/426F 98-01	M019-4
KX125/250 97-02	M019-6	YZ450F/426F/450F 02-05	M019-12
KX125/250 03-07	M019-13		
KX250 88-96	M019-1		

- RACEWEAR
- YOUTH
- OUTERWEAR
- SIZING CHART
- RIDER ACCESSORIES
- PACKS & BAGS
- CASUALS
- CONTROLS
- BRAKING
- DRIVE
- BEARINGS
- ENGINE
- ELECTRICAL
- EXHAUST
- ARMOR
- WHEELS
- TRAIL PACKS
- RAMPS & STANDS
- CONTROLS
- BRAKING
- DRIVE
- SUSPENSION
- BEARINGS
- ENGINE
- ELECTRICAL
- EXHAUST
- ARMOR
- WHEELS
- TRAIL TOOLS
- PACKS & BAGS
- RAMPS & STANDS

