



PAUL CARPENTER

# M1 RACEWEAR

Modern racewear for the traditional off-road rider. M1 delivers a relaxed fit with long lasting performance. Through feedback from our top riders and advancement in design, M1 has been engineered to enhance and maximize your riding performance. Attention to detail and focus on the fundamentals, makes M1 a must have for serious riders.



## M1 PANT

1. Main materials; Nylon / Polyester with double and triple stitched seams
  2. Injection molded and sublimated graphics
  3. Oversized and durable leather inner knee panels
  4. Pre-bent pant leg design
  5. Integrated dual waist cinch strap system to fine tune the fit
- + Reinforced seat area
  - + Removable foam hip pads
  - + \$89.95

M1 PANT	28	30	32	34	36	38	40	42	44	46	48
WAIST CINCHED/WAIST STRETCHED	27"-30"	29"-32"	31"-34"	33"-36"	35"-38"	37"-40"	39"-42"	41"-44"	43"-46"	45"-48"	47"-50"
INSEAM	29"	29"	30"	31"	32"	32"	33"	33"	33"	33"	33"
<b>BLUE</b>	2901-	1925	1926	1927	1928	1929	1930	1931	1932	1933	1934
<b>LIME</b>	2901-	1936	1937	1938	1939	1940	1941	1942	1943		
<b>ORANGE</b>	2901-	1947	1948	1949	1950	1951	1952	1953	1954	1955	1956
<b>RED</b>	2901-	1958	1959	1960	1961	1962	1963	1964	1965	1966	1967
<b>STEALTH</b>	2901-	1969	1970	1971	1972	1973	1974	1975	1976	1977	1978
<b>YELLOW</b>	2901-	1980	1981	1982	1983	1984	1985	1986	1987		

- RACEWEAR
- YOUTH
- OUTERWEAR
- SIZING CHART
- RIDER ACCESSORIES
- PACKS & BAGS
- CASUALS
- CONTROLS
- BRAKING
- DRIVE
- BEARINGS
- ENGINE
- ELECTRICAL
- EXHAUST
- ARMOR
- WHEELS
- TRAIL PACKS
- RAMPS & STANDS
- CONTROLS
- BRAKING
- DRIVE
- SUSPENSION
- BEARINGS
- ENGINE
- ELECTRICAL
- EXHAUST
- ARMOR
- WHEELS
- RAMPS & COVERS
- TRAIL TOOLS
- PROMO

# MI RACEWEAR



RED



RED



BLUE



LIME



ORANGE



BLUE



LIME



ORANGE

## MI JERSEY

1. Main materials: Semi-ventilated polyester
2. V-neck collar with roost guard cross hatch
3. Generous fit and raglan-style sleeves for comfort and full range movement
4. Non-restrictive durable knit mini cuffs
5. Anti-fade sublimated graphics

MI JERSEY	SM	MD	LG	XL	2XL	3XL
CHEST	41"-43"	43"-45"	45"-47"	47"-49"	49"-51"	51"-53"
SLEEVE LENGTH	33"-34"	34"-35"	35"-36"	36"-37"	37"-38"	38"-39"
<b>BLUE</b>	2910-	1287	1288	1289	1290	1291
<b>LIME</b>	2910-	1293	1294	1295	1296	1297
<b>ORANGE</b>	2910-	1299	1300	1301	1302	1303
<b>RED</b>	2910-	1305	1306	1307	1308	1309
<b>STEALTH</b>	2910-	1311	1312	1313	1314	1315
<b>YELLOW</b>	2910-	1317	1318	1319	1320	1321



STEALTH



YELLOW

## MI GLOVE

1. Main materials: Nylon / Polyester
  2. Clarino palm with reinforced clarino palm and thumb patches
  3. Minimal seams and graphics allow excellent comfort and flexibility
  4. Hi-frequency welded graphics guard against heavy roost
  5. Tacky grip print on finger tips for added lever control
  6. Adjustable hook and loop wrist closure
- + Pre-curved and light weight design  
+ \$19.95

MI GLOVE	XS	SM	MD	LG	XL	2XL	3XL
HAND CIRCUMFERENCE (SEE PG.42)	5"-6"	6"-7"	7"-8"	8"-9"	9"-10"	10"-11"	11"-12"
<b>BLUE</b>	3330-	1326	1327	1328	1329	1330	1331
<b>LIME</b>	3330-	1333	1334	1335	1336	1337	1338
<b>ORANGE</b>	3330-	1340	1341	1342	1343	1344	1345
<b>RED</b>	3330-	1347	1348	1349	1350	1351	1352
<b>STEALTH</b>	3330-	1354	1355	1356	1357	1358	1359
<b>YELLOW</b>	3330-	1361	1362	1363	1364	1365	1366



STEALTH



YELLOW

- RACEWEAR
- YOUTH
- OUTERWEAR
- SIZING CHART
- RIDER ACCESSORIES
- PACKS & BAGS
- CASUALS
- CONTROLS
- BRAKING
- DRIVE
- BEARINGS
- ENGINE
- ELECTRICAL
- EXHAUST
- ARMOR
- WHEELS
- TRAIL PACKS
- RAMPS & STANDS
- CONTROLS
- BRAKING
- DRIVE
- SUSPENSION
- BEARINGS
- ENGINE
- ELECTRICAL
- EXHAUST
- ARMOR
- WHEELS
- RAMPS & COVERS
- TRAIL TOOLS
- PROMO





# QUALIFIER RACEWEAR



BLUE



BLUE



ORANGE



RED



STEALTH



ORANGE



RED



STEALTH

## QUALIFIER JERSEY

1. Main materials: Polyester with sublimated graphics
  2. Generous size cut and raglan-style sleeves for comfort and full range movement
  3. Simple V-neck collar design
  4. Open sleeve cuff provides excellent air flow and no restriction
- + \$19.95

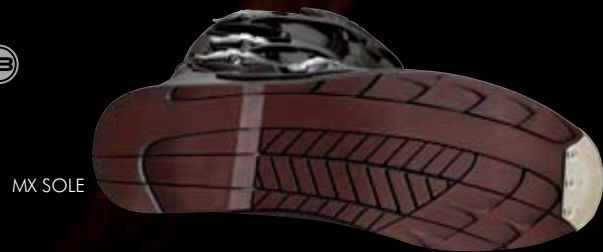
QUALIFIER JERSEY	SM	MD	LG	XL	2XL	3XL	4XL
CHEST	41"-43"	43"-45"	45"-47"	47"-49"	49"-51"	51"-53"	53"-55"
SLEEVE LENGTH	33"-34"	34"-35"	35"-36"	36"-37"	37"-38"	38"-39"	39"-40"
<b>BLUE</b>	2910-	1323	1324	1325	1326	1327	1328
<b>ORANGE</b>	2910-	1330	1331	1332	1333	1334	1335
<b>RED</b>	2910-	1337	1338	1339	1340	1341	1342
<b>STEALTH</b>	2910-	1344	1345	1346	1347	1348	1349

## QUALIFIER GLOVE

1. Main materials: Stretchable nylon / polyester
  2. New slip on cuff design
  3. Non-restrictive hi-frequency welded graphics add durability and armor
  4. Tacky grip print on finger and thumb tips for added lever control
  5. Unpadded single-layer Clarino palm and re-enforced thumb pad
- + \$15.95

QUALIFIER GLOVE	SM	MD	LG	XL	2XL	3XL
HAND CIRCUMFERENCE (SEE PG.42)	6"-7"	7"-8"	8"-9"	9"-10"	10"-11"	11"-12"
<b>BLUE</b>	3330-	1368	1369	1370	1371	1372
<b>ORANGE</b>	3330-	1374	1375	1376	1377	1378
<b>RED</b>	3330-	1380	1381	1382	1383	1384
<b>STEALTH</b>	3330-	1386	1387	1388	1389	1390

# MI BOOT



MX SOLE



ATV SOLE



REPLACEMENT PARTS

REPLACEMENT PARTS	PART#	PRICE	
TOE GUARD KIT	3430-0152	\$3.95	(includes left and right side metal toe guard and 6 mounting screws)
STRAP KIT	3430-0153	\$4.95	(includes five different size straps)
BUCKLE KIT	3430-0154	\$2.95	(includes one buckle/buckle base and 2 mounting screws)



CALF GUARD



SHIN PLATE

## MI BOOT

1. Leather upper chassis with polyurethane coating
  2. Contoured polyurethane shin plate and ankle plate for impact and abrasion resistance
  3. Split-grain leather calf guard for abrasion and heat resistance
  4. Polycarbonate two position latching buckle with pivoting base (buckle base has set screws to adjust angle of the buckle)
  5. Adjustable and replaceable polyurethane closure strap
  6. Foam interior and insole provides superb support and comfort
  7. Replaceable steel toe guard
  8. Rubber outsole
- + Average weight of only 3.5 lbs. per boot
  - + Available in ATV or MX sole
  - + Replacement buckles, straps, and toe guards available
  - + \$99.95

MI BOOT SIZE	6	7	8	9	10	11	12	13	14	15	
MX SOLE	3410-	0423	0424	0425	0426	0427	0428	0429	0430	0431	0432
ATV SOLE	3410-	0433	0434	0435	0436	0437	0438	0439	0440	0441	0442

- RACEWEAR
- YOUTH
- OUTERWEAR
- SIZING CHART
- RIGHT ACCESSORIES
- LEFT ACCESSORIES
- COCKPITS
- CONTROLS
- BRAKING
- DRIVE
- BEARINGS
- ENGINE
- ELECTRICAL
- EXHAUST
- ARMOR
- WHEELS
- TRAIL PACKS
- RAMPS & STANDS
- CONTROLS
- BRAKING
- DRIVE
- SUSPENSION
- BEARINGS
- ENGINE
- ELECTRICAL
- EXHAUST
- ARMOR
- WHEELS
- RAMPS & COVERS
- TRAIL TOOLS
- PROMO



# YOUTH RACEWEAR

- RACEWEAR
- YOUTH
- OUTERWEAR
- SIZING CHART
- RIDER ACCESSORIES
- PACKS & BAGS
- CASUALS
- CONTROLS
- BRAKING
- DRIVE
- BEARINGS
- ENGINE
- ELECTRICAL
- EXHAUST
- ARMOR
- WHEELS
- TRAIL PACKS
- RAMPS & STANDS
- CONTROLS
- BRAKING
- DRIVE
- SUSPENSION
- BEARINGS
- ENGINE
- ELECTRICAL
- EXHAUST
- ARMOR
- WHEELS
- RAMPS & COVERS
- TRAIL TOOLS
- PROMO



## SAHARA YOUTH

Created from the same ventilation principles as the Sahara Race wear, the Sahara Youth gear shares the same features and high-quality materials. Engineered from the ground up, this line of clothing was developed around the ventilation panels to best aid in airflow. That's why the Sahara line is the undisputed champ of hot weather gear.

### SAHARA YOUTH PANT

1. Main materials: Highly ventilated nylon / polyester
  2. Perforated genuine leather inner knee panels
  3. Reinforced high wear areas around knees and seat
  4. Knee, thigh, and seat stretch panels add flexibility and comfort
  5. Strategically placed rubber badges for roost armor and durability
  6. Integrated dual waist cinch straps with grip tabs to fine tune the fit
  7. Pre-bent pant leg design
- + Removable vented hip pads
  - + Designed for breathability and lightweight
  - + \$79.95

SAHARA YOUTH PANT	20	22	24	26	28
WAIST CINCED/WAIST STRETCHED	16"-18"	18"-20"	20"-22"	22"-24"	24"-26"
INSEAM	18"	20"	21"	23"	24"
<b>BLUE</b>	2903-	0596	0597	0598	0599
<b>ORANGE</b>	2903-	0603	0604	0605	0606
<b>RED</b>	2903-	0610	0611	0612	0613

### SAHARA YOUTH JERSEY

1. Main materials: Highly ventilated polyester / nylon
  2. Strategic pattern utilizes three different mesh fabrics to allow the best ventilation possible
  3. Features new v-neck micro-mesh collar and open back mesh panels
  4. Generous fit and raglan-style sleeves for full range movement
  5. Anti-fade sublimated graphics
  6. Open sleeve cuff construction allows better air flow and comfort
- + \$34.95

SAHARA YOUTH JERSEY	SM	MD	LG	XL
CHEST	27"-29"	29"-31"	31"-33"	33"-35"
SLEEVE LENGTH	27"-28"	28"-29"	29"-30"	30"-31"
<b>BLUE</b>	2912-	0606	0607	0608
<b>ORANGE</b>	2912-	0611	0612	0613
<b>RED</b>	2912-	0616	0617	0618

### SAHARA YOUTH GLOVE

1. Main materials: Highly ventilated and flexible nylon / polyester
  2. Wrap around fingertip design helps prevent tearing through the ends
  3. Open flow stretch mesh finger gussets
  4. Hi-frequency welded finger armor
- + Lightweight and highly ventilated design for ultimate breathability and comfort
  - + Tacky grip print on finger tips for added lever control
  - + Adjustable hook and loop wrist closure
  - + Perforated Clarino palm with reinforced palm and thumb patches
  - + Pre-curved chassis
  - + \$19.95

SAHARA YOUTH GLOVE	XS	SM	MD	LG
AGE (SEE PG.43)	3-4	5-6	7-8	9-10
<b>BLUE</b>	3332-	0471	0472	0473
<b>ORANGE</b>	3332-	0475	0476	0477
<b>RED</b>	3332-	0479	0480	0481



# M1 YOUTH

Created from the same principles as the M1 Racewear, the M1 Youth gear shares all the same features and high-quality materials. M1 delivers a clean-cut fit with long lasting performance. Attention to detail and focus on the fundamentals, makes M1 a must have for youth riders.

## M1 YOUTH PANT

1. Main materials: Nylon / Polyester with double and triple stitched seams
  2. Injection molded and sublimated graphics
  3. Oversized and durable leather inner knee panels
  4. Pre-bent pant leg design
  5. Integrated dual waist cinch strap system to fine tune the fit
- + Reinforced seat area
  - + Removable foam hip pads
  - + \$69.95

M1 YOUTH PANT	16	18	20	22	24	26	28
WAIST CINCHED/ WAIST STRETCHED	16"-18"	18"-20"	20"-22"	22"-24"	24"-26"	26"-28"	28"-30"
INSEAM	18"	20"	21"	23"	24"	26"	27"
<b>BLUE</b>	2903-	0559	0560	0561	0562	0563	0564
<b>LIME</b>	2903-	0566	0567	0568	0569	0570	0571
<b>ORANGE</b>	2903-	0573	0574	0575	0576	0577	0578
<b>RED</b>	2903-	0580	0581	0582	0583	0584	0585
<b>STEALTH</b>	2903-	0587	0588	0589	0590	0591	0592

## M1 YOUTH JERSEY

1. Main materials: Semi-ventilated polyester
  2. V-neck collar with roost guard cross hatch
  3. Generous fit and raglan-style sleeves for comfort and full range movement
  4. Non-restrictive durable knit mini cuffs
  5. Anti-fade sublimated graphics
- + \$24.95

M1 YOUTH JERSEY	XS	SM	MD	LG	XL
CHEST	27"-29"	29"-31"	31"-33"	33"-35"	35"-37"
SLEEVE LENGTH	27"-28"	28"-29"	29"-30"	30"-31"	31"-32"
<b>BLUE</b>	2912-	0580	0581	0582	0583
<b>LIME</b>	2912-	0585	0586	0587	0588
<b>ORANGE</b>	2912-	0590	0591	0592	0593
<b>RED</b>	2912-	0595	0596	0597	0598
<b>STEALTH</b>	2912-	0600	0601	0602	0603

## M1 YOUTH GLOVE

1. Main materials: nylon/polyester
  2. Minimal seams and graphics allow excellent comfort and flexibility
  3. Hi-frequency welded graphics guard against heavy roost + Clarino palm with reinforced clarino palm and thumb patches + Pre-curved and light weight design + Tacky grip print on finger tips for added lever control + Adjustable hook and loop wrist closure
- + \$16.95

M1 YOUTH GLOVE	XS	SM	MD	LG
AGE (SEE PG.43)	3-4	5-6	7-8	9-10
<b>BLUE</b>	3332-	0451	0452	0453
<b>LIME</b>	3332-	0455	0456	0457
<b>ORANGE</b>	3332-	0459	0460	0461
<b>RED</b>	3332-	0463	0464	0465
<b>STEALTH</b>	3332-	0467	0468	0469

- RACEWEAR
- YOUTH
- OUTERWEAR
- SIZING CHART
- RIDER ACCESSORIES
- PACKS & BAGS
- CASUALS
- CONTROLS
- BRAKING
- DRIVE
- BEARINGS
- ENGINE
- ELECTRICAL
- EXHAUST
- ARMOR
- WHEELS
- TRAIL PACKS
- RAMPS & STANDS
- CONTROLS
- BRAKING
- DRIVE
- SUSPENSION
- BEARINGS
- ENGINE
- ELECTRICAL
- EXHAUST
- ARMOR
- WHEELS
- RAMPS & COVERS
- TRAIL TOOLS
- PROMO



# YOUTH ACCESSORIES



## YOUTH MI BOOT

- + Leather upper chassis with polyurethane coating
- + Contoured polyurethane shin plate and ankle plate for impact and abrasion resistance
- + Split-grain leather calf guard for abrasion and heat resistance
- + Polycarbonate two position latching buckle with pivoting base ( buckle base has set screws to adjust angle of the buckle )
- + Adjustable and replaceable polyurethane closure strap
- + Foam interior and insole provides superb support and comfort
- + Replaceable steel toe guard
- + Rubber outsole
- + Average weight of only 3 lbs. per boot
- + Available in youth sizes 11-7
- + Replacement buckles, straps, and toe guards available
- + \$84.95

MI BOOT SIZE	11	12	13	1	2	3	4	5	6	7	
<b>MX SOLE</b>	3411-	0148	0149	0150	0151	0152	0153	0154	0155	0156	0157

REPLACEMENT PARTS	PART#	PRICE
TOE GUARD KIT	3430-0152	\$3.95 (includes left and right side metal toe guard and 6 mounting screws)
STRAP KIT	3430-0153	\$4.95 (includes five different size straps)
BUCKLE KIT	3430-0154	\$2.95 (includes one buckle/buckle base and 2 mounting screws)



## MI YOUTH SOCK

- + Designed for ultra comfort and durability specifically for smaller feet
- + Tall over the calf design
- + Reinforced elastic foot and calf helps eliminate bunching
- + Fits sizes 2-7
- + \$6.95

MI YOUTH SOCK	PART#
	3431-0052



## XCR YOUTH SHIELD

- + Injection-molded polycarbonate frame
- + Compression-molded bio-foam interior
- + Injection-molded suspension style polyurethane shoulders
- + Adjustable shoulder and bicep straps
- + Detachable bicep guards
- + Adjustable closure system
- + Fits most riders weighing 40-70 lbs.
- + Replacement hardware kit available
- + \$84.95

XCR YOUTH SHIELD	PART#
BLUE/CLEAR	2701-0085
STEALTH/CLEAR	2701-0086
REPLACEMENT HARDWARE KIT	2701-0087 <sup>A</sup>

<sup>A</sup>Kit includes: 4 small shoulder bolts, 4 large shoulder bolts, and 4 plastic rivets \$3.95



## XCR MICRO JACKET

- + Main materials: T300D Polyester Oxford coated with PU (3000mm)
- + Mini version offers the same function and quality as adult XCR jacket, but designed to fit smaller sized riders
- + Waterproof and highly breathable nylon fabric shell with a thin mesh liner
- + Waterproof main zipper closure
- + Mesh lined rear vents help expel unwanted heat
- + Reinforced shoulder and elbows for wear resistance
- + Collar is lined with soft fleece and cut tall for warmth and rain protection
- + Self-storage feature allows the jacket to be folded into rear pocket and converted into fanny pack
- + Inside chest pocket for extra cargo
- + Front hand warmer pockets
- + Integrated elastic pull cord allows you to fine tune the fit
- + Reflective graphics for increased visibility
- + \$79.95

YOUTH XCR JACKET	SM	MD	LG	XL
CHEST	29"-31"	31"-33"	33"-35"	35"-37"
SLEEVE LENGTH	28"-29"	29"-30"	30"-31"	31"-32"
<b>BLUE</b>	2922-	0037	0038	0039
<b>RED</b>	2922-	0041	0042	0043



## MI YOUTH KNEE GUARD

- + Outer shell constructed with high-impact, injection-molded polyethylene plastic
- + Lined with impact-absorbing hi-density foam covered in soft polyester fabric
- + Adjustable polyester elastic strap with hook-and-loop closure
- + Polyester fabric trim on edge of foam padding for improved durability
- + Sold in pairs
- + \$9.95

MI YOUTH KNEE GUARD	PART#
	MB164



## XCR YOUTH KIDNEY BELT

- + Molded bio-foam base
- + Internal polycarbonate support structure
- + Steel mesh ventilation ports
- + Dual molded tension pulls with four elastic support straps
- + Fits waist sizes 20"-26"
- + \$19.95

XCR YOUTH KIDNEY BELT	PART#
	2703-0020

- FACEWEAR
- YOUTH
- OUTERWEAR
- SIZING CHART
- RIDER ACCESSORIES
- BACKS & HAIR
- CASUALS
- CONTROLS
- BRAKING
- DRIVE
- REARVIEW
- ENGINE
- ELECTRICAL
- EXHAUST
- ARMOR
- WHEELS
- TRAIL PACKS
- RAMPS & STANDS
- CONTROLS
- BRAKING
- DRIVE
- SUSPENSION
- BEARINGS
- FRAMES
- ELECTRICAL
- EXHAUST
- ARMOR
- WHEELS
- RAMPS & COVERS
- TRAIL TOOLS
- FRAMES



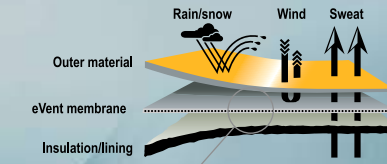
# OUTERWEAR



# MONARCH PASS

MONARCH PASS GEAR with eVENT™ Fabric

Defend yourself against the elements. When cold sleet and rain are pummeling you at 50+ miles an hour, the only thing that will keep you dry and warm is your outerwear. Monarch Pass provides the utmost in water and wind protection. No other material offers the elite performance of eVENT™ fabric. The redesigned Monarch Pass gear is unsurpassed at keeping you dry from the inside out.



## MONARCH PASS JACKET

1. Main materials: Technical eVENT™ laminated nylon (10,000mm)
  2. Advanced shell design with fully sealed seams to insure waterproof integrity
  3. Highly breathable eVENT™ fabric keeps wind and water out, but lets perspiration vapor pass through
  4. Two hand warmer pockets provide extra storage room for essential riding items
  5. Under-arm mesh lined zippered vents channel air directly to the body
  6. Drink system access port under front storm flap
  7. Rear mesh lined zippered vents provide venturi effect, creating maximum airflow
  8. Adjustable cuffs and nylon strap on left sleeve to attach a wrist watch
  9. Self-storage feature allows the jacket to be folded into rear pocket and converted into a fanny pack
  10. Reflective graphics for increased visibility
- + Fleece lined, extra high collar helps prevent cold air and water from leaking down your neck
  - + Integrated elastic pull cord allows you to fine tune the fit
  - + \$299.95

MONARCH PASS JACKET	SM	MD	LG	XL	2X	3X
CHEST	41"-43"	43"-45"	45"-47"	47"-49"	49"-51"	51"-53"
SLEEVE LENGTH	33"-34"	34"-35"	35"-36"	36"-37"	37"-38"	38"-39"
<b>BLACK</b>	2920-	0163	0164	0165	0166	0168

## MONARCH PASS JERSEY

- + Main materials: 200gm stretchable polyester fleece
- + Developed specifically for cold weather riding with Monarch Pass jacket
- + Soft anti-pilling fleece and contour fit for comfort
- + Embroidered graphics
- + 7" zipper access with interior zipper flap & closet
- + \$49.95

MONARCH PASS JERSEY	SM	MD	LG	XL	2X	3X
CHEST	41"-43"	43"-45"	45"-47"	47"-49"	49"-51"	51"-53"
SLEEVE LENGTH	33"-34"	34"-35"	35"-36"	36"-37"	37"-38"	38"-39"
<b>BLACK</b>	2910-	1016	1012	1013	1014	1015



## MONARCH PASS PANT

1. Main materials: Technical eVENT™ laminated nylon (10,000mm)
  2. Advanced shell design with fully sealed seams to insure waterproof integrity
  3. Highly breathable eVENT™ fabric keeps wind and water out, but lets perspiration vapor pass through (refer to diagram on top of pg. 36)
  4. Two storm flap covered zipper pockets
  5. Adjustable outer gaiter helps keep water and mud from running into boots
  6. Gaiter zipper for easy boot and knee guard access
  7. Articulated knee areas feature ballistic nylon panels in front for greater wear resistance
  8. Split-grain leather inner right knee panel for heat and wear resistance
  9. Cordura seat area for better wear resistance
  10. Reflective graphics for increased visibility
- + Designed extra roomy for non-restrictive movement and comfort
  - + Order according to your waist size (Not sized to be worn over other pants)
  - + \$199.95 (30"-42"), \$219.95 (44"-48")

MONARCH PASS PANT	30	32	34	36	38	40	42	44	46	48
WAIST	31.5"	33.5"	35.5"	37.5"	39.5"	41.5"	43.5"	45.5"	47.5"	49.5"
INSEAM	31.25"	32.00"	32.75"	33.50"	34.00"	34.00"	34.00"	34.00"	34.00"	34.00"
<b>BLACK</b>	2901-	1284	1285	1286	1287	1288	1289	1290	1291	1292

## MONARCH PASS GLOVE

- + Main materials: Nylon / Polyester
- + Ultimate waterproof glove for cold and wet weather riding
- + Hipora and fleece lining to keep the cold and wet weather out
- + Clarino palm offers the same comfort and feel as a motocross glove
- + Finger gussets constructed with stretch cordura fabric for durability and flexibility
- + Tacky grip print on finger tips for added lever control
- + Exclusive extra long zip-off cuff for wet weather riding
- + \$34.95

MONARCH PASS GLOVE	XS	SM	MD	LG	XL	2X	3X
HAND CIRCUMFERENCE (SEE PG. 43)	5"-6"	6"-7"	7"-8"	8"-9"	9"-10"	10"-11"	11"-12"
<b>BLACK</b>	3330-	1032	1033	1034	1035	1036	1038

- RACEWEAR
- YOUTH
- OUTERWEAR
- BIKING CHAIR
- KNEE PROTECTORS
- BACKS & BAGS
- CASINGS
- CONTROLS
- BRAKING
- DRIVE
- BEARINGS
- ENGINE
- ELECTRICAL
- EXHAUST
- ARMOR
- WHEELS
- TRAIL PACKS
- RAMPS & STANDS
- CONTROLS
- BRAKING
- DRIVE
- SUSPENSION
- BEARINGS
- ENGINE
- ELECTRICAL
- EXHAUST
- ARMOR
- WHEELS
- RAMPS & COVERS
- TRAIL TOOLS
- PROMO