

BRAKING



PRO SHARK FIN DISC GUARD WITH BRAKE CARRIER 1

- + The burliest rear disc guard on the market, offering protection for the caliper and the rotor
- + This disc protector replaces the entire brake carrier for the most coverage available
- + Lower fin is replaceable, but we doubt you'll break one
- + Made in the USA
- + Replacement lower fin part # M13-051, \$25.95
- + \$96.95 - \$99.95



SHARK FIN DISC GUARD 2

- + Thick aluminum guard keeps out the rocks and roots
- + One part number fits many popular older bikes
- + High-quality and extremely durable
- + Easy bolt on installation
- + Made in the USA
- + \$26.95

MAKE/MODEL/YEAR	1 PRO SHARK FIN W/BRAKE CARRIER PART #	2 SHARK FIN DISC GUARD PART #
HONDA		
CRF150R/Expert 06-08	1711-0301	-
CR125/250/500R 84-96	-	M13-040
CR125/250R 02-07	1711-0135	-
CRF250/450R_X 03-07	1711-0135	-
XR250/400/600R/600L 90-01	-	M13-040
HUSABERG		
FC/FE/FX 95-02	-	M13-040
HUSQVARNA		
ALL MODELS 91-00	-	M13-040
KAWASAKI		
KDX200/250 91-94*	-	M13-040
KX250F 04-07	1711-0047	-
KX450F 06-07	1711-0047	-
KLX 450R 08	1711-0047	-
KTM		
All Models 125-525, except	-	M13-040
03 SX 250/450 89-03	-	-
SX250/450 03	1711-0045	-
EXC/MXC/SX/SXF/XC/XC-W/XCF	1711-0045	-
XCF-W125-525 04-07	-	-
SUZUKI		
DR MODELS 89-99	-	M13-040
RMX250 89-97	-	M13-040
RMZ250 04-06	1711-0047	-
YAMAHA		
YZ/WR125/250/250F/450F 03-04	1711-0133	-
YZ/WR125/250/250F/450F 05	1711-0134	-
YZ/WR125/250/250F/450F 06-07	1711-0230	-

*Bolts onto carrier, instead of swingarm
Replacement fin for Pro Shark Fin, part # M13-051



PEDAL PROTECTOR

- + Keeps trailside nasties from wedging between the shifter/brake pedal and engine cases
- + Sturdy cable helps prevent rocks and stumps from bending pedals
- + Includes three wires and clamps
- + \$9.95

PEDAL PROTECTOR	PART#
	MH05

MASTER CYLINDER REPAIR KIT

- + Each kit contains all necessary components to rebuild a master cylinder
- + Made by Nissin, an OEM supplier in Japan
- + Applications cover most popular models
- + \$14.95 - \$28.95

MASTER CYLINDER REBUILD KITS

MAKE/MODEL/YEAR	FRONT PART #	REAR PART #	MAKE/MODEL/YEAR	FRONT PART #	REAR PART #
HONDA					
CR80R 92-97	-	0617-0020	KX500 94-04	-	0617-0033
CR80R 98-99	0617-0019	0617-0020	KDX650 93-96	-	0617-0033
CR80R 00-02	0617-0018	0617-0020	SUZUKI		
CR85R 03-05	0617-0018	0617-0020	RM6085 96-04	-	0617-0047
CR125/250R 86	0617-0019	-	RM85 05-06	0617-0045	0617-0047
CR125/250R 87-99	0617-0019	0617-0020	RM125 96-03	0617-0046	0617-0047
CR125/250R 00-01	0617-0018	0617-0020	RM125 04-05	0617-0045	0617-0047
CR125/250R 02-05	0617-0018	0617-0021	RM250 96-03	0617-0046	0617-0047
XR250R 90-95	-	0617-0020	RM250 04-06	0617-0045	0617-0047
XR250R 96-99	0617-0019	-	DR250/SSE 90-95	-	0617-0047
XR400R 96-99	0617-0019	0617-0020	DR350/SSE 90-99	-	0617-0047
XR400R 00-03	0617-0018	0617-0020	DRZ400E 00-04	0617-0046	0617-0047
CRF450R 02-05	0617-0018	0617-0021	RMZ450 05	0617-0045	-
CR500R 86	0617-0019	-	DR650SE 96-04	-	0617-0047
CR500R 87-99	0617-0019	0617-0020	YAMAHA		
CR500R 00-01	0617-0018	0617-0020	YZ80 93-00	-	0617-0024
XR600R 91-00	-	0617-0020	YZ80 01 0617-0022	0617-0022	-
XR650L 93-05	-	0617-0020	YZ85 02-04	0617-0023	0617-0024
XR650R 00-04	0617-0018	0617-0020	YZ125/250 88-95	-	0617-0024
KAWASAKI					
KX65 00-05	-	0617-0033	YZ125/250 96-00	-	0617-0025
KX80 88-00	-	0617-0033	YZ125/250 01	0617-0022	0617-0025
KX85 01-05	-	0617-0033	YZ125/250 02	0617-0023	0617-0025
KX100 95-05	-	0617-0033	YZ125/250 03-04	0617-0023	0617-0026
KX125 86-90	-	0617-0033	WR250Z 91-96	-	0617-0024
KX125 94-05	-	0617-0033	WR250Z 97-98	-	0617-0025
KX125 97-99	0617-0031	-	WR250Z 01	0617-0022	0617-0025
KX125 01-04	0617-0032	-	WR250Z 02	0617-0023	0617-0025
KDX200 89-05	-	0617-0033	WR250Z 03-04	0617-0023	0617-0026
KDX230 97-05	-	0617-0033	YZ250WR 89-90	-	0617-0024
KX250 86-91	-	0617-0033	WR400F 00	-	0617-0025
KX250 97-99	0617-0031	-	YZ426F 00	-	0617-0025
KX250 94-04	-	0617-0033	WR250Z426F 01	0617-0022	0617-0025
KX250 01-04	0617-0032	-	WR250Z426F 02	0617-0023	0617-0025
KLX300 97-04	-	0617-0033	WR250Z450F 03-04	0617-0023	0617-0026
KX500 86-90	-	0617-0033	WR500Z 92-93	-	0617-0024



KTM Pin Installed, 1702-0035

BRAKE PINS

- + External 8mm head requires only one tool for pad changes
- + Constructed of anodized stainless steel
- + M0503 contains two brake pins
- + KTM rear brake pin is a quick release design with no tiny cotter pins
- + Made in USA
- + \$11.95 - \$20.95

BRAKE PINS

MAKE/MODEL/YEAR	FRONT BRAKE	REAR BRAKE	MAKE/MODEL/YEAR	FRONT BRAKE	REAR BRAKE
GAS GAS					
All models 00-07	M-0501	M-0502			
HONDA					
CR80/85R 92-05	-	M-0502	RM125/250 90-92	-	M-0503 ^A
CR125/250/500R 87-07	M-0501	M-0502	RM125/250 93-95	M-0501	M-0503 ^A
CRF150/230F 03-07	M-0501	-	RM125/250 96-07	M-0501	M-0502
CRF250/450R_X 03-07	M-0501	M-0502	DR250 90-95	M-0503 ^A	M-0503 ^A
XR250/400/600R 87-04	M-0501	M-0502	DRZ250 00-05	M-0501	M-0503 ^A
XR650 03-07	M-0501	M-0502	RMX250 90-92	M-0503 ^A	M-0503 ^A
KAWASAKI					
KX125/250/500 89-89	M-0503 ^A	-	RMX250 93-96	M-0501	M-0503 ^A
KX125/250/500 90-93	M-0503 ^A	M-0503 ^A	RMX250 97-98	M-0501	-
KX125/250/500 94	M-0501	M-0503 ^A	RMZ250/450 04-07	M-0501	M-0502
KX125/250/500 95-07	M-0501	M-0502	DR350 90-99	M-0503 ^A	M-0503 ^A
KDX200/220 90-94	-	M-0503 ^A	DRZ400 00-07	M-0501	M-0502
KDX200/220 95-05	M-0501	M-0503 ^A	HUSQVARNA		
KX250/450F 04-07	M-0501	M-0502	ALL 90-94	M-0503 ^A	M-0503 ^A
KDX300/400 03-05	M-0501	M-0502	YAMAHA		
KTM					
ALL 125CC AND ABOVE	-	1702-0035	YZ125/250 90-02	M-0503 ^A	M-0503 ^A
			YZ125/250 03-07	M-0501	M-0502
			WR250 90-97	M-0503 ^A	M-0503 ^A
			YZ/WR250F/400F/426F 98-02	M-0503 ^A	M-0503 ^A
			YZ/WR250F/450F 03-07	M-0501	M-0502

^AContains two brake pins



STAINLESS STEEL BRAIDED BRAKE AND CLUTCH LINES

- + Swivel union ends are the secret to easier fitting, and ensure a kink and stress free installation.
- + Venhill Engineering in the UK makes Moose Racing stainless steel brake and clutch lines to the highest specifications
- + Each line is made from top quality Dupont Teflon® coated hose, wrapped with British made stainless steel, and PVC coated for protection and great looks
- + Rubber protection boots and extra rigid tubing are used to protect vulnerable areas from heat and impact and to prevent hose flex under compression
- + Each line is designed to withstand a minimum of 14,000 psi
- + Installing our stainless lines gives a large performance increase by significantly reducing expansion under pressure, and absorption of water when compared to stock rubber hoses
- + \$46.95 - \$69.95

BRAKE LINES

MAKE/MODEL/YEAR	FRONT LINE PART#	REAR LINE PART#	MAKE/MODEL/YEAR	FRONT LINE PART#	REAR LINE PART#
HONDA					
CR80/85R 00-04	1741-0163	1741-0169	125/200SX 02	MK01-1027	1741-0257
CR65R/EXPERT 05-07	1741-0975	1741-0976	250EXC 98-99	MK01-1025	MK01-2007
CRF150R 07	-	MH02-2014	250SX 94-97	MK01-1023	-
CR125/250/500R 87-94	-	MH02-2014	250SX 98-99	MK01-1023	MK01-2007
CR125/250/500R 95-97	MH02-1043	MH02-2014	250EXC 00-03	MK01-1028	1741-0257
CR125/250/500R 98-01	MH02-1043	MH02-2018	250SX 00-03	MK01-1027	1741-0257
CR125/250R 02-04	MH02-1043	MH02-2023	250SX-F 05-07	MK01-1027	1741-0258
CR125/250 05-07	1741-0977	1741-0978	125/200/250/400/450SX/125SX	MK01-1027	1741-0258
CRF250R/X 04	MH02-1043	MH02-2023	XC/XC-W 04-07	-	-
CRF250R 05-07	1741-0249	1741-0978	125/200/250/400/450EXC/EXC-G 04-07	MK01-1028	1741-0258
CRF250R 08-07	1741-0250	1741-0978	300EXC 98-99	MK01-1025	MK01-2007
XR400R 97-04	MH02-1046	-	300EXC 00-03	MK01-1028	MK01-2007
CRF450R 02-04	MH02-1043	MH02-2027	300EXC 04-07	MK01-1028	1741-0258
CRF450R 05	1741-0251	1741-0252	525SX/MXC 04-05	MK01-1028	1741-0258
CRF450R 06-07	1741-0980	1741-0252	SUZUKI		
HUSQVARNA					
CR125 05	1741-0247	1741-0248	RM65 03	MK02-1036	MK02-2014
CR125 06-07	1741-0247	1741-0981	RM65 04	1741-0164	1741-0170
WR125 06-07	-	1741-0981	RM65 05	1741-0164	1741-0253
TC250 06-07	1741-0984	1741-0981	RM85/85L 05-07	MS01-1035	-
TE250 06	1741-0983	1741-0981	RM85L 02-07	-	MS01-2031
TC450 05	-	1741-0248	RM100 03	MK02-1032	MK02-2012
TC450 06	1741-0984	1741-0981	RM125/250 96-98	MS01-1030	MS01-2026
TE450 06	1741-0982	1741-0981	RM125/250 99-03	MS01-1031	MS01-2026
SMR450R 06	-	1741-0981	RM125/250 04	1741-0165	1741-0171
TC510 06	1741-0984	1741-0981	RM125/250 05	1741-0165	1741-0259
TE510 06	1741-0982	1741-0981	RM125/250 06-07	1741-0985	1741-0261
TE610 06	1741-0983	-	RMZ250 04-05	1741-0165	1741-0172
KAWASAKI					
KX65 00-01	-	MK02-2014	RMZ250 06	1741-0165	1741-0256
KX65 02-03	MK02-1036	MK02-2014	DRZ400E 00-07	MS01-1032	MS01-2027
KX65 04	1741-0164	1741-0170	DRZ400SM 04-07	1741-0992	1741-0993
KX65 05-07	1741-0164	1741-0253	RMZ450 05-06	1741-0260	1741-0261
XR80/85/100 98-04	MK02-1032	MK02-2012	RMZ250/450 07	1741-0985	1741-0988
KX85 05-07	MK02-1032	1741-0254	YAMAHA		
KX125/250 95-96	-	MK02-2011	YZ80 85 01-07	MY01-1048	MY01-2007
KX125/250 97-98	MK02-1030	MK02-2011	YZ125/250 94-95	MY01-1041	MY01-2006
KX125/250 99-02	MK02-1030	MK02-2013	YZ125/250 96-97	MY01-1042	MY01-2006
KX125/250 03	MK02-1030	1741-0171	YZ125/250/250F 98-02	MY01-1043	MY01-2010
KX125/250 04	1741-0165	1741-0171	YZ125/250 03-04	MY01-1043	MY01-2021
KX125/250 05-06	1741-0165	1741-0255	YZ125/250 03-04	MY01-1046	MY01-2021
KX250 07	1741-0985	1741-0255	w/Headlamp	-	-
KX250F 04	1741-0165	1741-0172	YZ125/250 05	1741-0262	1741-026

DRIVE

Moose Racing chain is made for us through an exclusive contract with a top European supplier. We are in a state of constant development, working to bring you better chain at a competitive price. The recently developed FB technology is now proven, we've been using it for three years. As the FB continues to impress, the development is paying dividends throughout the entire range of our chains.



520 FB CHAIN 1

- + This is the top of the line. The strongest, most durable sealed chain that we offer
- + FB = Fine Blanking, an incredibly precise manufacturing process that yields perfectly cut links. Tight tolerances make the plate, pin, and bushing union accurate and strong
- + Due to the accuracy of the cuts and the use of 20% stronger steel the FB has our highest tensile strength rating, nearly 8000 lbs
- + The FB uses special O-rings which are chemically treated to gain strength and reduce friction. This treatment allows the FB-rings to be impregnated with grease
- + FB-rings are more durable than X-rings, with significantly less friction
- + Gold links and rollers, silver inner plates, pins and bushings
- + \$98.95 - \$109.95



520 HPO O-RING CHAIN 2

- + High-quality, O-ring chain
- + Extra high-tensile strength linkplates
- + Rust-resistant nickel-plated side plates
- + Vacuum injected greased chain
- + Solid bushings
- + Extra master link included
- + Replacement master link available
- + \$68.95 - \$79.95



520 RXP PRO-MX CHAIN 3

- + High-quality, non-O-Ring chain
- + Designed specifically for motocross racing applications
- + High-tensile strength nickel-plated inner link plates
- + High-tensile rust-resistant gold plated side plates
- + Vacuum injected greased chain
- + Extra master link included
- + Replacement master link available
- + \$59.95 - \$69.95



428 RXP PRO-MX CHAIN 4

- + High-quality, non-O-Ring chain
- + Designed specifically for high-powered, mini-racing machines
- + Vacuum injected greased chain
- + High-tensile strength nickel-plated inner link plates
- + High-tensile rust-resistant gold plated side plates
- + Solid rollers
- + Replacement master link available
- + \$25.95 - \$34.95



420 RXP PRO-MX CHAIN 5

- + High quality, non-O-Ring chain
- + Designed specifically for mini-racing machines
- + Vacuum injected greased chain
- + High-tensile strength nickel-plated inner link plates
- + High-tensile rust-resistant gold plated side plates
- + Solid rollers
- + Replacement master link available
- + \$16.95 - \$25.95

JOSH SUMMEY



520 FB CHAIN 1			428 RXP PRO-MX CHAIN 4		
# LINKS	PART #	SUG. RETAIL	# LINKS	PART #	SUG. RETAIL
100	1222-0099	\$98.95	90	M575-00-90	\$25.95
110	1222-0100	\$100.95	96	M575-00-96	\$26.95
114	1222-0101	\$103.95	100	M575-00-100	\$27.95
116	1222-0102	\$105.95	110	M575-00-110	\$28.95
120	1222-0103	\$109.95	114	M575-00-114	\$29.95
M LINK	1225-0056	\$4.95	116	M575-00-116	\$30.95
			120	M575-00-120	\$31.95
			130	M575-00-130	\$34.95
			M LINK	M575-00-01	\$1.95

520 HPO O-RING CHAIN 2			420 RXP PRO-MX CHAIN 5		
# LINKS	PART #	SUG. RETAIL	# LINKS	PART #	SUG. RETAIL
84	M573-00-84	\$68.95	90	M576-00-90	\$16.95
86	M573-00-86	\$69.95	96	M576-00-96	\$17.95
88	M573-00-88	\$70.95	100	M576-00-100	\$18.95
90	M573-00-90	\$71.95	110	M576-00-110	\$19.95
96	M573-00-96	\$72.95	114	M576-00-114	\$20.95
100	M573-00-100	\$73.95	116	M576-00-116	\$21.95
110	M573-00-110	\$74.95	120	M576-00-120	\$22.95
112	M573-00-112	\$75.95	130	M576-00-130	\$25.95
114	M573-00-114	\$76.95	M LINK	M576-00-01	\$1.95
116	M573-00-116	\$77.95			
120	M573-00-120	\$79.95			
M LINK	M573-00-01	\$3.95			

520 RXP PRO-MX CHAIN 3			AVERAGE TENSILE STRENGTH	
# LINKS	PART #	SUG. RETAIL	520 FB	7937
96	M574-00-96	\$63.95	520 HPO (O ring)	7496
100	M574-00-100	\$64.95	520 (non O ring)	7937
110	M574-00-110	\$65.95	428 RXP	5071
112	M574-00-112	\$66.95	420 RXP	4409
114	M574-00-114	\$67.95		
116	M574-00-116	\$68.95		
120	M574-00-120	\$69.95		
M LINK	M574-00-01	\$2.95		

Note: Average tensile strength is NOT the same as maximum tensile strength that other manufacturers use
 Maximum tensile = the absolute strongest chain ever tested
 Average tensile = the average of ten chains tested

- FACEWEAR
- YOUTH
- OUTERWEAR
- SIZING CHART
- RIDER ACCESSORIES
- PACKS & BAGS
- CASUALS
- CONTROLS
- BRAKING
- DRIVE
- BEARINGS
- ENGINE
- ELECTRICAL
- EXHAUST
- ARMOR
- WHEELS
- TRAIL PACKS
- RAMPS & STANDS
- CONTROLS
- BRAKING
- DRIVE
- SUSPENSION
- BEARINGS
- ENGINE
- ELECTRICAL
- EXHAUST
- ARMOR
- WHEELS
- PACKS & BAGS
- TRAIL TOOLS
- PROVIDE

DRIVE



CHROMOLY-STEEL FRONT SPROCKETS 1

- + Machined from impact and wear resistant chromoly-steel
- + Inner splines are broached to provide maximum spline-to-countershaft contact, this helps distribute driveline forces over the largest possible area
- + Heat treated, then finished with a nickel coating for corrosion resistance and lubricity
- + Made in the USA
- + \$16.95 - \$19.95



ALUMINUM REAR SPROCKETS 2

- + The 7075 T651 aluminum we use for these sprockets receives an extra tempering which reduces distortion and provides optimal thickness vs. typically thinner 7075 T6 sprockets
- + 100% Machined, no stamping or grinding
- + Optimal tooth thickness results in maximum tooth and chain contact
- + We leave the "cleaning" grooves out of our sprockets, because more aluminum contacting your chain means longer chain and sprocket life
- + Made in the USA
- + \$55.95



SPROCKET LOCK BOLT KIT

- + Set of six grade 10 steel sprocket bolts and Fuji-lock nuts
- + Good for replacing stripped or stretched bolts
- + Replace the whole set when you change sprockets
- + Fits all full size Japanese and European off-road / MX models
- + Part # 2401-0285 \$9.95

SPROCKETS		1		2	
MODEL	STD. GEARING	FRONT SIZE	PART #	REAR SIZE	PART #
HONDA (CON'T)					
MB 5 82	-	12	M603-21-12 ^a	-	-
MR50 74-75	-	13	M603-21-13	-	-
Z50 A,R 69-99	13/34	14	M603-21-14	-	-
ZB50 88	15/37	15	M603-21-15	-	-
CRF/XR50R 00-07	14/37	14	M603-25-14	35	1211-0003
		15	M603-25-15	37	M630-61-37
				39	1211-0004
				40	1211-0005
CR60R 83-84	14/45	12	M603-21-12 ^a	36	M630-23-36
		13	M603-21-13	46	M630-23-46
		14	M603-21-14	-	-
		15	M603-21-15	-	-
CL/C70 69-83	-	12	M603-21-12 ^a	-	-
CT70 3-Speed 69-94	-	13	M603-21-13	-	-
CT/SL70 71-72	-	14	M603-21-14	-	-
		15	M603-21-15	-	-
XL70 74-76	13/44	12	M603-21-12 ^a	-	-
		13	M603-21-13	-	-
		14	M603-21-14	-	-
		15	M603-21-15	-	-
XR70R 97-99	15/36	12	M603-21-12 ^a	36	M630-23-36
		14	M603-21-13	46	M630-23-46
		13	M603-21-14	-	-
		15	M603-21-15	-	-
CRF/XR70R 00-07	15/36	14	M603-25-14	36	M630-23-36
		15	M603-25-15	46	M630-23-46
XL/XR75 73-79	14/44-46	12	M603-21-12 ^a	-	-
		13	M603-21-13	-	-
		14	M603-21-14	-	-
		15	M603-21-15	-	-
XL/XR80 79-86	15/37-14/46	12	M603-21-12 ^a	-	-
		13	M603-21-13	-	-
		14	M603-21-14	-	-
		15	M603-21-15	-	-
CRF/XR80R 85-07	14/46	12	M603-21-12 ^a	36	M630-23-36
		13	M603-21-13	46	M630-23-46
		14	M603-21-14	-	-
		15	M603-21-15	-	-
CR80R 80-83	14/47	12	M603-21-12 ^a	-	-
		13	M603-21-13	-	-
		14	M603-21-14	-	-
		15	M603-21-15	-	-
CR80R 84	14/49	12	M603-21-12 ^a	36	M630-23-36
		13	M603-21-13	46	M630-23-46
		14	M603-21-14	-	-
		15	M603-21-15	-	-
CR80R 85	14/49	12	M603-21-12 ^a	49	M630-25-49
		13	M603-21-13	50	M630-25-50
		14	M603-21-14	55	M630-25-55
		15	M603-21-15	-	-
CR80R 86-02	15/49	14	M603-25-14	49	M630-25-49
CR85R 03-04	15/50	15	M603-25-15	50	M630-25-50
CR85R 05-07	15/49			51	1211-0301
CR85RB EXP 03-04	15/56			52	1211-0302
CR85RB EXP 05-07	15/55			53	1211-0303
				54	1211-0304
				55	M630-25-55
				56	1211-0150
XL100S 79-83	15/45	13	M603-31-13	-	-
		14	M603-31-14	-	-
		15	M603-31-15	-	-
XR100R 81-84	14/50	13	M603-31-13	-	-
		14	M603-31-14	-	-
		15	M603-31-15	-	-
CRF/XR100R 85-07	14/50	13	M603-31-13	48	1211-0002
		14	M603-31-14	50	M630-34-50
		15	M603-31-15	-	-
CB125S/SL/XL125 70-73	15/49	15	M603-32-15	-	-
NX125 88-90	15/46-48	15	M603-32-15	-	-
CR125R 87-96	13/51	12	M602-14-12	45	M601-14-45
CR125R 97	12/49	13	M602-14-13	46	M601-14-46
CR125R 98-99	13/51			47	M601-14-47
CR125R 00-01	13/52			48	M601-14-48
CR125R 02	13/51			49	M601-14-49
CR125R 03	13/52			50	M601-14-50
				51	M601-14-51
				52	M601-14-52
				53	M601-14-53
				54	M601-14-54
CR125R 04	13/53	13	1212-0038	45	M601-14-45
CR125R 05-07	13/52	14	1212-0039	46	M601-14-46
				47	M601-14-47
				48	M601-14-48
				49	M601-14-49
				50	M601-14-50
				51	M601-14-51
				52	M601-14-52
				53	M601-14-53
				54	M601-14-54
CR125R 04	13/53	13	1212-0038	45	M601-14-45
CR125R 05-07	13/52	14	1212-0039	46	M601-14-46
				47	M601-14-47
				48	M601-14-48
				49	M601-14-49
				50	M601-14-50
				51	M601-14-51
				52	M601-14-52
				53	M601-14-53
				54	M601-14-54

^aM603-21-12 May require lock plate modification.

SPROCKETS		1		2	
MODEL	STD. GEARING	FRONT SIZE	PART #	REAR SIZE	PART #
HONDA (CON'T)					
CRF150R 2007	15/50	14	1212-0282	49	M630-25-49
CRF150R Expert 2007	15/56	15	1212-0283	50	M630-25-50
				51	1211-0301
				52	1211-0302
				53	1211-0303
				54	1211-0304
				55	M630-25-55
				56	1211-0150
CRF150F 03-05	13/48	13	1212-0026	45	M601-14-45
CRF230F 03-07	13/50	14	1212-0027	46	M601-14-46
				47	M601-14-47
				48	M601-14-48
				49	M601-14-49
				50	M601-14-50
				51	M601-14-51
				52	M601-14-52
				53	M601-14-53
				54	M601-14-54
XR200R 82-83	13-50	12	M602-48-12	-	-
XR200 82-84		13	M602-48-13	-	-
XL200 83-84				-	-
XR200R 85	13/50	-	-	48	M601-47-48
				49	M601-47-49
				50	M601-47-50
				51	M601-47-51
				52	M601-47-52
				54	M601-47-54
XR200R 84	13/45	12	M602-48-12	48	M601-47-48
XR200R 86-02	13/50-47	13	M602-48-13	49	M601-47-49
				50	M601-47-50
				51	M601-47-51
				52	M601-47-52
				54	M601-47-54
CR250R 84-85	14/53	-	-	45	M601-14-45
				46	M601-14-46
				47	M601-14-47
				48	M601-14-48
				49	M601-14-49
				50	M601-14-50
				51	M601-14-51
				52	M601-14-52
				53	M601-14-53
				54	M601-14-54
CR250R 86-87	14/51	14	M602-19-1	45	M601-14-45
				46	M601-14-46
				47	M601-14-47
				48	M601-14-48
				49	M601-14-49
				50	M601-14-50
				51	M601-14-51
				52	M601-14-52
				53	M601-14-53
				54	M601-14-54
CR250R 88-91	14/51	12	M602-16-12	45	M601-14-45
CR250R 92-95	13/49	13	M602-16-13	46	M601-14-46
CR250R 96-01	13/50	14	M602-16-14	47	M601-14-47
CR250R 02-03	13/48	15	M602-16-15	48	M601-14-48
CR250R 04	13/50			49	M601-14-49
CR250R 05-07	13/49			50	M601-14-50
				51	M601-14-51
				52	M601-14-52
				53	M601-14-53
				54	M601-14-54
CRF250R 04-07	13/51	12	1212-0037	45	M601-14-45
CRF250X 04-07	14/53	13	1212-0038	46	M601-14-46
		14	1212-0039	47	M601-14-47
				48	M601-14-48
				49	M601-14-49
				50	M601-14-50
				51	M601-14-51
				52	M601-14-52
				53	M601-14-53
				54	M601-14-54
XR250L 91-96	13/40	13	1212-0026	-	-
		14	1212-0027	-	-
XR250R 84-87	13/50-48	-	-	48	M601-47-48
				49	M601-47-49
				50	M601-47-50
				51	M601-47-51
				52	M601-47-52
				54	M601-47-54
XR250R 88-89	13/48	13	1212-0026	48	M601-47-48
		14	1212-0027	49	M601-47-49
				50	M601-47-50
				51	M601-47-51
				52	M601-47-52
				54	M601-47-54
XR250R 90-95	13/48	13	1212-0026	46	M601-10-46
		14	1212-0027	48	M601-10-48
				49	M601-10-4

DRIVE

SPROCKETS						
MODEL	STD. GEARING	FRONT SIZE	1 PART #	REAR SIZE	2 PART #	
KAWASAKI (CON'T)						
KDX80 84-88	14/48	12	M604-22-12	44	M640-23-44	
KX80 83-84	14/39	13	M604-22-13			
		14	M604-22-14			
		14	M604-22-14			
KX80 79-82	14/48	12	M604-22-12	-	-	
		13	M604-22-13			
		14	M604-22-14			
		14	M604-22-14			
KX80 85	14/50	12	M607-22-12	44	M640-23-44	
		13	M607-22-13			
		14	M607-22-14			
		14	M607-22-14			
		15	M607-22-15			
KX80 86-00	13/48-54	12	M604-22-12	49	M640-25-49	
		13	M604-22-13	50	M640-25-50	
		14	M604-22-14	51	M640-25-51	
KX85 01-07	14/50	13	M604-22-13	52	M640-25-52	
		14	M604-22-14			
KX100 95-07	13/51-54	12	M604-22-12	49	M640-25-49	
		13	M604-22-13	50	M640-25-50	
		14	M604-22-14	51	M640-25-51	
		14	M604-22-14	52	M640-25-52	
KLX110 02-07	-	-	33	M640-21-33		
			35	I211-0006		
			37	M640-21-37		
			37	M640-21-37		
KLX125/L 03-06	14/51,14/57	14	M606-35-14	51	M660-39-51	
		15	I212-0002	54	M660-39-54	
		15	M606-35-14	57	M660-39-57	
		14	M602-24-12	47	M601-26-47	
		13	M602-24-13	48	M601-26-48	
KX125 82	13/51	12	M602-24-12	47	M601-26-47	
			M602-24-13	48	M601-26-48	
			M602-24-13	49	M601-26-49	
			M601-26-50	50	M601-26-50	
			M601-26-51	51	M601-26-51	
KX125 85-89	12/47	13	M601-26-51	52	M601-26-52	
			M601-26-52	52	M601-26-52	
KX125 90-91	12/48	12	M601-26-52	52	M601-26-52	
			M601-26-52	52	M601-26-52	
KX125 92-93	12/49	12	M601-26-52	52	M601-26-52	
			M601-26-52	52	M601-26-52	
KX125 84	12/50	12	M602-24-12	-	-	
			13	M602-24-13	-	-
KX125 94-95	12/49	12	M602-25-12	47	M601-26-47	
			M602-25-13	48	M601-26-48	
			M602-25-13	49	M601-26-49	
			M601-26-50	50	M601-26-50	
			M601-26-51	51	M601-26-51	
KX125 96-97	13/50	13	M601-26-51	52	M601-26-52	
			M601-26-52	52	M601-26-52	
KX125 98-99	12/48	12	M601-26-52	52	M601-26-52	
			M601-26-52	52	M601-26-52	
KX125 00-02	12/49	13	M601-26-52	52	M601-26-52	
			M601-26-52	52	M601-26-52	
KX125 03-05	13/51	13	M601-26-52	52	M601-26-52	
			M601-26-52	52	M601-26-52	
KDX175 80-82	-	12	M602-24-12	-	-	
			13	M602-24-13	-	-
			13	M602-24-13	-	-
KZ200 78-79	-	12	M602-26-12	-	-	
			13	M602-26-13	-	-
			14	M602-26-14	-	-
			15	M602-26-15	-	-
			15	M602-26-15	-	-
KDX200/220 89-06	13/47	12	M602-26-12	47	M601-26-47	
			M602-26-13	48	M601-26-48	
			M602-26-14	49	M601-26-49	
			M602-26-14	49	M601-26-49	
			M602-26-15	50	M601-26-50	
			M602-26-15	51	M601-26-51	
KL250 77-79	14/39-40	12	M602-26-12	-	-	
			13	M602-26-13	-	-
			14	M602-26-14	-	-
			15	M602-26-15	-	-
			15	M602-26-15	-	-
KL250G S-Sherpa 85-03	14/40	13	M602-26-13	-	-	
			14	M602-26-14	-	-
KLR250 85-05	15/44	15	M602-57-15	-	-	
			15	M602-57-15	-	-
KLX250 79	-	12	M602-26-12	-	-	
			13	M602-26-13	-	-
			14	M602-26-14	-	-
			15	M602-26-15	-	-
			15	M602-26-15	-	-
KX/KDX250 83-84	14/50	14	M602-50-14	-	-	
			15	M602-50-15	-	-
			15	M602-50-15	-	-
KX250 85	14/50	15	M602-50-15	48	M601-26-48	
			M602-50-15	49	M601-26-49	
			M602-50-15	50	M601-26-50	
			M602-50-15	51	M601-26-51	
			M602-50-15	52	M601-26-52	
KX250 87-89	14/47	12	M602-26-12	47	M601-26-47	
			M602-26-13	48	M601-26-48	
			M602-26-14	49	M601-26-49	
			M602-26-14	49	M601-26-49	
			M602-26-15	50	M601-26-50	
KX250 90-91	14/48	13	M601-26-51	51	M601-26-51	
			M601-26-52	52	M601-26-52	
KX250 92-97	14/49	14	M601-26-52	52	M601-26-52	
			M601-26-52	52	M601-26-52	
KX250 98	13/48	15	M601-26-52	52	M601-26-52	
			M601-26-52	52	M601-26-52	
KDX250 91-94	13/47	13	M601-26-52	52	M601-26-52	
			M601-26-52	52	M601-26-52	
KX250 99	13/48	12	M602-46-12	47	M601-26-47	
			M602-46-13	48	M601-26-48	
			M602-46-14	49	M601-26-49	
			M602-46-14	49	M601-26-49	
			M602-46-15	50	M601-26-50	
KX250 00	14/47	13	M601-26-51	51	M601-26-51	
			M601-26-52	52	M601-26-52	
KX250 01	14/48	14	M601-26-52	52	M601-26-52	
			M601-26-52	52	M601-26-52	
KX250 02-04	13/49	15	M601-26-52	52	M601-26-52	
			M601-26-52	52	M601-26-52	
KX250 05-07	13/51	15	M601-26-52	52	M601-26-52	
			M601-26-52	52	M601-26-52	
KX250F 04-05	13/48	12	I212-0040	47	M601-26-47	
			I212-0041	48	M601-26-48	
			I212-0041	49	M601-26-49	
			I212-0041	50	M601-26-50	
			I212-0041	51	M601-26-51	
KX250F 06-07	13/48	12	I212-0252	47	M601-26-47	
			I212-0253	48	M601-26-48	
			I212-0254	49	M601-26-49	
			I212-0254	50	M601-26-50	
			I212-0254	51	M601-26-51	
KLX250/300 94-02	14/50	13	M602-26-12	47	M601-26-47	
			M602-26-13	48	M601-26-48	
			M602-26-14	49	M601-26-49	
			M602-26-14	49	M601-26-49	
			M602-26-15	50	M601-26-50	
KX250F 06-07	13/48	12	I212-0252	47	M601-26-47	
			I212-0253	48	M601-26-48	
			I212-0254	49	M601-26-49	
			I212-0254	50	M601-26-50	
			I212-0254	51	M601-26-51	
KX250F 06-07	13/48	12	I212-0252	47	M601-26-47	
			I212-0253	48	M601-26-48	
			I212-0254	49	M601-26-49	
			I212-0254	50	M601-26-50	
			I212-0254	51	M601-26-51	
KX250F 06-07	13/48	12	I212-0252	47	M601-26-47	
			I212-0253	48	M601-26-48	
			I212-0254	49	M601-26-49	
			I212-0254	50	M601-26-50	
			I212-0254	51	M601-26-51	
KX250F 06-07	13/48	12	I212-0252	47	M601-26-47	
			I212-0253	48	M601-26-48	
			I212-0254	49	M601-26-49	
			I212-0254	50	M601-26-50	
			I212-0254	51	M601-26-51	
KX250F 06-07	13/48	12	I212-0252	47	M601-26-47	
			I212-0253	48	M601-26-48	
			I212-0254	49	M601-26-49	
			I212-0254	50	M601-26-50	
			I212-0254	51	M601-26-51	
KX250F 06-07	13/48	12	I212-0252	47	M601-26-47	
			I212-0253	48	M601-26-48	
			I212-0254	49	M601-26-49	
			I212-0254	50	M601-26-50	
			I212-0254	51	M601-26-51	
KX250F 06-07	13/48	12	I212-0252	47	M601-26-47	
			I212-0253	48	M601-26-48	
			I212-0254	49	M601-26-49	
			I212-0254	50	M601-26-50	
			I212-0254	51	M601-26-51	
KX250F 06-07	13/48	12	I212-0252	47	M601-26-47	
			I212-0253	48	M601-26-48	
			I212-0254	49	M601-26-49	
			I212-0254	50	M601-26-50	
			I212-0254	51	M601-26-51	
KX250F 06-07	13/48	12	I212-0252	47	M601-26-47	
			I212-0253	48	M601-26-48	
			I212-0254	49	M601-26-49	
			I212-0254	50	M601-26-50	
			I212-0254	51	M601-26-51	
KX250F 06-07	13/48	12	I212-0252	47	M601-26-47	
			I212-0253	48	M601-26-48	
			I212-0254	49	M601-26-49	
			I212-0254	50	M601-26-50	
			I212-0254	51	M601-26-51	
KX250F 06-07	13/48	12	I212-0252	47	M601-26-47	
			I212-0253	48	M601-26-48	
			I212-0254	49	M601-26-49	
			I212-0254	50	M601-26-50	
			I212-0254	51	M601-26-51	
KX250F 06-07	13/48	12	I212-0252	47	M601-26-47	
			I212-0253	48	M601-26-48	
			I212-0254	49	M601-26-49	
			I212-0254	50	M601-26-50	
			I212-0254	51	M601-26-51	
KX250F 06-07	13/48	12	I212-0252	47	M601-26-47	
			I212-0253	48	M601-26-48	
			I212-0254	49	M601-26-49	
			I212-0254	50	M601-26-50	
			I212-0254	51	M601-26-51	
KX250F 06-07	13/48	12	I212-0252	47	M601-26-47	
			I212-0253	48	M601-26-48	
			I212-0254	49	M601-26-49	
			I212-0254	50	M601-26-50	
			I212-0254	51	M601-26-51	
KX250F 06-07	13/48	12	I212-0252	47	M601-26-47	
			I212-0253	48	M601-26-48	
			I212-0254	49	M601-26-49	
			I212-0254	50	M601-26-50	
			I212-0254	51	M601-26-51	
KX250F 06-07	13/48	12	I212-0252	47	M601-26-47	
			I212-0253	48	M601-26-48	
			I212-0254	49	M601-26-49	
			I212-0254	50	M601-26-50	
			I212-0254	51	M601-26-51	
KX250F 06-07	13/48	12	I212-0252	47	M601-26-47	
			I212-0253	48	M601-26-48	
			I212-0254	49	M601-26-49	
			I212-0254	50	M601-26-50	
			I212-0254	51	M601-26-51	
KX250F 06-07	13/48	12				

DRIVE

SPROCKETS		1		2	
MODEL	STD. GEARING	FRONT SIZE	PART #	REAR SIZE	PART #
YAMAHA (CON'T)					
YZ60 81-83	12/42	12	M607-22-12	-	-
		13	M607-22-13	-	-
		14	M607-22-14	-	-
		15	M607-22-15	-	-
		15	M607-22-15	-	-
G7S 72	-	12	M607-22-12	32	M670-22-32
		13	M607-22-13	35	M670-22-35
		14	M607-22-14	37	1211-0125
		14	M607-22-14	-	-
		15	M607-22-15	-	-
BW80 86-90	15/32	12	M607-22-12	32	M670-22-32
		13	M607-22-13	35	M670-22-35
		14	M607-22-14	37	1211-0125
		14	M607-22-14	-	-
		15	M607-22-15	-	-
PW80 83-85/91-06	15/32	12	M607-22-12	32	M670-22-32
		13	M607-22-13	35	M670-22-35
		14	M607-22-14	37	1211-0125
		14	M607-22-14	-	-
		15	M607-22-15	-	-
DT80 81-83	14/41	12	M607-22-12	-	-
		13	M607-22-13	-	-
		14	M607-22-14	-	-
		14	M607-22-14	-	-
		15	M607-22-15	-	-
GT80 74-80	14/41	12	M607-22-12	-	-
		13	M607-22-13	-	-
		14	M607-22-14	-	-
		14	M607-22-14	-	-
		15	M607-22-15	-	-
GTMX 73-79	14/41	12	M607-22-12	-	-
		13	M607-22-13	-	-
		14	M607-22-14	-	-
		14	M607-22-14	-	-
		15	M607-22-15	-	-
GT1 73 14/41	14/41	12	M607-22-12	-	-
		13	M607-22-13	-	-
		14	M607-22-14	-	-
		14	M607-22-14	-	-
		15	M607-22-15	-	-
LB80 11HC 76	14/41	12	M607-22-12	32	M670-22-32
		13	M607-22-13	35	M670-22-35
		14	M607-22-14	37	1211-0125
		14	M607-22-14	-	-
		15	M607-22-15	-	-
MX80 80-82	14/41	12	M607-22-12	32	M670-22-32
		13	M607-22-13	35	M670-22-35
		14	M607-22-14	37	1211-0125
		14	M607-22-14	-	-
		15	M607-22-15	-	-
LB80 11AC 77-78	-	12	M607-22-12	32	M670-22-32
		13	M607-22-13	35	M670-22-35
		14	M607-22-14	37	1211-0125
		14	M607-22-14	-	-
		15	M607-22-15	-	-
TY80 74-75	12/41	13	M607-20-13	-	-
		13	M607-20-13	-	-
		13	M607-20-13	-	-
		13	M607-20-13	-	-
		13	M607-20-13	-	-
YZ80 74-77	13/43-48	12	M607-32-12	-	-
		13	M607-32-13	-	-
		14	M607-32-14	-	-
		14	M607-32-14	-	-
		15	M607-32-15	-	-
YZ80 81-92	-	12	M607-32-12	-	-
		13	M607-32-13	-	-
		14	M607-32-14	-	-
		14	M607-32-14	-	-
		15	M607-32-15	-	-
YZ80 93-01	14/47	12	M607-32-12	47	M660-30-47
		13	M607-32-13	48	M660-30-48
		14	M607-32-14	49	M660-30-49
		14	M607-32-14	-	-
		15	M607-32-15	50	M660-30-50
YZ85 02-07	14/47	14	M602-15-14	47	M660-30-47
		14	M602-15-14	48	M660-30-48
		14	M602-15-14	49	M660-30-49
		14	M602-15-14	50	M660-30-50
		15	M602-15-15	50	M660-30-50
TT-R90 00-07	14/35	12	M607-22-12	32	M670-22-32
		13	M607-22-13	35	M670-22-35
		14	M607-22-14	37	1211-0125
		14	M607-22-14	-	-
		15	M607-22-15	-	-
DT100 74-76	14/49	12	M607-32-12	-	-
		13	M607-32-13	-	-
		14	M607-32-14	-	-
		14	M607-32-14	-	-
		15	M607-32-15	-	-
MX100 74-75	14/52	12	M607-32-12	-	-
		13	M607-32-13	-	-
		14	M607-32-14	-	-
		14	M607-32-14	-	-
		15	M607-32-15	-	-
RS100 75-76	-	12	M607-32-12	32	M670-22-32
		13	M607-32-13	35	M670-22-35
		14	M607-32-14	37	1211-0125
		14	M607-32-14	-	-
		15	M607-32-15	-	-
DT100 77-83	14/45	12	M607-22-12	32	M670-22-32
		13	M607-22-13	35	M670-22-35
		14	M607-22-14	37	1211-0125
		14	M607-22-14	-	-
		15	M607-22-15	-	-
RT100 90-00	14/48	12	M607-22-12	32	M670-22-32
		13	M607-22-13	35	M670-22-35
		14	M607-22-14	37	1211-0125
		14	M607-22-14	-	-
		15	M607-22-15	-	-
MX100 79-83	14/48	12	M607-22-12	32	M670-22-32
		13	M607-22-13	35	M670-22-35
		14	M607-22-14	37	1211-0125
		14	M607-22-14	-	-
		15	M607-22-15	-	-
YZ100 76-83	-	12	M602-24-12	-	-
		13	M602-24-13	-	-
		13	M602-24-13	-	-
		13	M602-24-13	-	-
		13	M602-24-13	-	-
YZ100 82-83	-	12	M602-24-12	48	M601-46-48
		13	M602-24-13	49	M601-46-49
		13	M602-24-13	50	M601-46-50
		13	M602-24-13	51	M601-46-51
		13	M602-24-13	52	M601-46-52
DT125 74-81	-	12	M607-32-12	-	-
		13	M607-32-13	-	-
		14	M607-32-14	-	-
		14	M607-32-14	-	-
		15	M607-32-15	-	-
MX/RD/TA125 74-76	-	12	M607-32-12	-	-
		13	M607-32-13	-	-
		14	M607-32-14	-	-
		14	M607-32-14	-	-
		15	M607-32-15	-	-
TT-R125R/L 00-01	-	13	M607-25-13	49	M670-29-49
		14	1212-0001	54	M670-29-54
		14	M607-25-13	49	M670-40-49
		14	M607-25-13	49	M670-40-49
		14	M607-25-13	49	M670-40-49
TT-R125R 02-07	13/49	13	M607-25-13	49	M670-40-49
		13	M607-25-13	49	M670-40-49
		13	M607-25-13	49	M670-40-49
		13	M607-25-13	49	M670-40-49
		13	M607-25-13	49	M670-40-49
TT-R125L 02-07	13/54	14	1212-0001	52	1211-0001
		14	1212-0001	54	M670-40-54
		14	M607-25-13	49	M670-40-49
		14	M607-25-13	49	M670-40-49
		14	M607-25-13	49	M670-40-49
IT125 80-81	-	12	M601-46-48	48	M601-46-48
		13	M601-46-49	49	M601-46-49
		13	M601-46-49	50	M601-46-50
		13	M601-46-49	51	M601-46-51
		13	M601-46-49	52	M601-46-52
YZ125 74-76	12/45-47	12	M607-32-12	-	-
		13	M607-32-13	-	-
		14	M607-32-14	-	-
		14	M607-32-14	-	-
		15	M607-32-15	-	-
YZ125 77-79	12/51	12	M602-24-12	-	-
		13	M602-24-13	-	-
		13	M602-24-13	-	-
		13	M602-24-13	-	-
		13	M602-24-13	-	-
YZ125 80-82	12/46-48	12	M602-24-12	48	M601-46-48
		13	M602-24-13	49	M601-46-49
		13	M602-24-13	50	M601-46-50
		13	M602-24-13	51	M601-46-51
		13	M602-24-13	52	M601-46-52
YZ125 83-84	12/48	12	M602-24-12	48	M601-46-48
		13	M602-24-13	49	M601-46-49
		13	M602-24-13	50	M601-46-50
		13	M602-24-13	51	M601-46-51
		13	M602-24-13	52	M601-46-52
YZ125 85	12/52	12	M602-24-12	48	M601-46-48
		13	M602-24-13	49	M601-46-49
		13	M602-24-13	50	M601-46-50
		13	M602-24-13	51	M601-46-51
		13	M602-24-13	52	M601-46-52
YZ125 86	13/50	12	M602-24-12	48	M601-46-48
		13	M602-24-13	49	M601-46-49
		13	M602-24-13	50	M601-46-50
		13	M602-24-13	51	M601-46-51
		13	M602-24-13	52	M601-46-52
YZ125 89-92	13/50	12	M602-44-12	48	M601-46-48
		13	M602-44-13	49	M601-46-49
		13	M602-44-13	50	M601-46-50
		13	M602-44-13	51	M601-46-51
		13	M602-44-13	52	M601-46-52
YZ125 93-96	13/50	12	M602-44-12	48	M601-46-48
		13	M602-44-13	49	M601-46-49
		13	M602-44-13	50	M601-46-50
		13	M602-44-13	51	M601-46-51
		13	M602-44-13	52	M601-46-52
YZ125 97-98	13/48	12	M602-44-12	48	M601-46-48
		13	M602-44-13	49	M601-46-49
		13	M602-44-13	50	M601-46-50
		13	M602-44-13	51	M601-46-51
		13	M602-44-13	52	M601-46-52
YZ125 99-04	13/48	12	M602-44-12	48	M601-46-48
		13	M602-44-13	49	M601-46-49
		13	M602-44-13	50	M601-46-50
		13	M602-44-13	51	M601-46-51
		13	M602-44-13	52	M601-46-52
YZ125 05-07	13/48	12	M602-47-12	48	M601-47-48
		13	M602-47-13	49	M601-47-49
		13	M602-47-13	50	M601-47-50
		14	M602-47-14	51	M601-47-51
		14	M602-47-14	52	M601-47-52
DT/MX175 74-81	16/49-14/47	12	M607-32-12	-	-
		12	M607-32-12	-	-
		12	M607-32-12	-	-
		12	M607-32-12	-	-
		12	M607-32-12	-	-

SPROCKETS		1		2	
MODEL	STD. GEARING	FRONT SIZE	PART #	REAR SIZE	PART #
YAMAHA (CON'T)					
TY175 75-76	12/51	13	M607-32-13	-	-
		14	M607-32-14	-	-
		14	M607-32-14	-	-
		15	M607-32-15	-	-
		15	M607-32-15	-	-
RD200 74-76	-	12	M602-24-12	-	-
		13	M602-24-13	-	-</

DRIVE



ALUMINUM CHAIN GUIDE

- + Replace fragile stock chain guides with these rugged aluminum guides
- + Aircraft aluminum withstands hard hits from logs and rocks
- + All mounting hardware and wear blocks included (unless noted)
- + Replacement wear blocks available
- + Replacement lower wear block: \$9.95
- + Replacement upper wear block: \$9.95
- + \$42.95

CHAIN GUIDES & REPLACEMENT WEAR BLOCKS

MAKE/MODEL/YEAR	CHAIN GUIDE PART #	REPL. LOWER WEAR BLOCK PART #	REPL. UPPER WEAR BLOCK PART #
GAS GAS			
EC125/200/250/300 97-01, 03-07	M01020 ^a	M01-016-014	M01-017-020
EC125/200/250/300 02	M01020	M01-016-014	M01-017-020
MC125/250 97-05	M01020	M01-016-014	M01-017-020
HONDA			
CR125/250/500R 90-04	M01012	M01-016-012	M01-017-012
CR125/250 05-07	1231-0050	M01-016-012	1231-0051
CRF250R/X/450R 02-04	M01012	M01-016-012	M01-017-012
CRF250/450R/X 05-07	1231-0050	M01-016-012	1231-0051
XR250/400/600R 90-04	M01016	M01-016-012	M01-017-016
KAWASAKI			
KX125/250/500 84-87	M01010 ^c	M01-016-010	M01-017-010
KX125/250/500 88-96	M01013	M01-016-010	M01-017-010
KX125/250 97-07	M-01019	M01-016-012	M01-017-019
KX250F 04-07	M-01019	M01-016-012	M01-017-019
KX500 97-04	M01013	M01-016-010	M01-017-010
KDX (ALL) 84-88	M01010 ^c	M01-016-010	M01-017-010
KDX (ALL) 89-06	M01013	M01-016-010	M01-017-010
KLX250/300/650 93-06	M01013	M01-016-010	M01-017-010
KLX400 03-06	M01015	M01-016-014	M01-017-015
KX450F 07	M-01019	M01-016-012	M01-017-019
KTM			
125/200/250/300/360/380 94-07 2-STR	M01017 ^b	M01-016-012	M01-017-017
250/400/450/500/525 4-STR 00-07	M01017 ^b	M01-016-012	M01-017-017
SUZUKI			
RM125/250 89-91	M01013	M01-016-010	M01-017-010
RM125/250 99-07	M01015	M01-016-014	M01-017-015
RMX250 89-97	M01013	M01-016-010	M01-017-010
RMZ250 04-06	M-01019	M01-016-012	M01-017-019
DR350 90-92	M01013	M01-016-010	M01-017-010
DRZ400 99-07	M01015	M01-016-014	M01-017-015
RMZ450 05-07	M01015	M01-016-014	M01-017-015
YAMAHA			
YZ125/250/490 89-92	M01011	M01-016-010	M01-017-010
YZ125/250 93-96	M01014	M01-016-014	M01-017-014
YZ125/250 97-07	M01015	M01-016-014	M01-017-015
YZ/VWR250F/400F/426F/450F 98-06	M01015	M01-016-014	M01-017-015
WR (ALL) 90-93	M01011	M01-016-010	M01-017-010
WR250 94-97	M01014	M01-016-014	M01-017-014

^aMust order mount part # 01017BRK, \$16.95

^bDoes not fit SX, SXF 2007

^cDoes not include mounting hardware, reuse OEM



CHAIN ADJUSTER EXTENDERS

- + Great for use when the rear axle is at or near maximum adjustment to extend wheelbase
- + Helps prevent adjuster bolts from bending under increased torque loads
- + Sold in pairs
- + Not for KTM
- + \$12.95

CHAIN ADJUSTER EXTENDERS	PART #
	M01067



SEALED CHAIN ROLLERS

- + Reduce the friction dragging down your drivetrain
- + Polyurethane roller with 98A durometer hardness for long life
- + Precision contact sealed bearings keep water and dirt away
- + Rollers 1231-0037, -0039, -0040, -0041 do not use a bearing, but ride directly on the frame boss. These rollers, made from Delrin, are self-lubricating and offer significant improvement over the OEM
- + M795-00 and M795-10 are available in colors, others in black only, see charts
- + Mounting hardware included
- + \$9.95 - \$14.95

SEALED CHAIN ROLLERS

BLACK	RED	CLEAR	BLUE
M795-00	M795-02	M795-03	M795-01
M795-10	M795-12	M795-13	M795-11

Rollers M795-00 and M795-10 are available in colors. Refer to the chart below.

SEALED CHAIN ROLLERS

MODEL NO	YEAR	UPPER	LOWER
GAS GAS			
EC/MC125	2001 - 07	M795-00	1231-0036
SM125	2003 - 05	M795-00	1231-0036
EC200	1999 - 06	M795-00	1231-0036
EC250	1996 - 07	M795-00	1231-0036
MC250	1999 - 06	M795-00	1231-0036
SM250	2003 - 05	M795-00	1231-0036
EC300	1999 - 07	M795-00	1231-0036
450SM, FSE	2005	M795-00	1231-0036

MODEL NO YEAR UPPER LOWER

MODEL NO	YEAR	UPPER	LOWER
KAWASAKI (CON'T)			
KX100	2001 - 07	1231-0040	1231-0040
KLX125, KLX125L	2003 - 06	M795-00	-
KX125	1978 - 81	1231-0034	1231-0034
KX125	1982 - 83	M795-10	M795-10
KX125	1984 - 05	M795-00	M795-00
KDX175	1980 - 82	1231-0034	1231-0034
KDX200	1983	M795-10	M795-10
KDX200	1984 - 06	M795-00	M795-00
KDX220	1997 - 05	M795-00	M795-00
KDX250	1980	1231-0034	1231-0034
KDX250	1981 - 83	M795-10	M795-10
KDX250	1984	M795-00	M795-00
KDX250	1991 - 94	M795-00	M795-00
KLX250	1979 - 80	1231-0034	1231-0034
KLX250	1994 - 96	M795-00	-
KLX250	2006 - 07	M795-00	-
KX250	1978 - 81	1231-0034	1231-0034
KX250	1982	M795-10	M795-10
KX250	1983	M795-10	-
KX250	1984 - 07	M795-00	M795-00
KX250F	2004 - 07	M795-00	M795-00
KLX300(R)	1997 - 07	M795-00	-
KDX400	1979 - 80	1231-0034	1231-0034
KLX400	2003	M795-10	M795-00
KDX420	1981	1231-0034	1231-0034
KX420	1980 - 81	1231-0034	1231-0034
KDX450	1982	-	1231-0034
KX450F	2006 - 07	M795-00	M795-00
KX500	1983	M795-10	M795-00
KX500	1984 - 04	M795-00	M795-00

KTM

50cc	1997 - 07	M795-14	M795-14
All except 640/950	1997 - 07	M795-14	M795-14
640/950 ADV/SM	2005 - 07	1231-0036	-
950 ADV/Super enduro	2004 - 07	1231-0036	-

SUZUKI

RM60	2003	1231-0037	1231-0037
RM65	2003 - 05	1231-0037	1231-0037
RM80	1980 - 86	M795-00	M795-00
RM80	1987 - 01	1231-0036	1231-0036
RM85, RM85L	2002 - 07	1231-0036	1231-0036
DR100	1983 - 90	M795-00	-
RM100	1979 - 81	M795-10	M795-10
RM100	2003	1231-0040	1231-0040
DR-Z125, DR-Z125L	2003 - 07	M795-00	-
RM125	1981 - 83	M795-10	M795-10
RM125	1984 - 85	1231-0034	M795-10
RM125	1986	1231-0034	1231-0034
RM125	1987 - 88	M795-10	M795-10
RM125	1989	M795-10	1231-0036
RM125	1990 - 00	M795-10	M795-10
RM125	2001 - 07	M795-00	M795-00
DR250	1982 - 93	M795-10	M795-10
DR250S	1990 - 95	M795-10	M795-10
DRZ250	2001 - 07	M795-00	M795-10
PE250	1980 - 81	M795-10	M795-10
RM250	1980 - 83	M795-10	M795-10
RM250	1984 - 85	1231-0034	M795-10
RM250	1986 - 88	M795-10	M795-10
RM250	1989	M795-10	1231-0036
RM250	1990 - 00	M795-10	M795-10
RM250	2001 - 07	M795-00	M795-00
RMX250	1989 - 98	M795-10	M795-10
RMZ250	2004 - 06	M795-00	M795-00
DR350	1990 - 99	M795-10	M795-10
DR350S	1990 - 96	M795-10	M795-10
DR350SE	1997 - 99	M795-10	1231-0036
DR400	1980	M795-10	M795-10
DRZ400E/S/SM	2000 - 07	M795-00	M795-10
RM400	1980	M795-10	M795-10
RMZ450	2005 - 07	M795-00	M795-00
RM465	1981 - 82	M795-10	M795-10
DR500	1981 - 83	M795-10	M795-10
RM500	1983	M795-10	M795-10

RACEWEAR

YOUTH

OUTERWEAR

SIZING CHART

RIDER ACCESSORIES

PACKS & BAGS

CASUALS

CONTROLS

BRACING

DRIVE

BEARINGS

ENGINE

ELECTRICAL

EXHAUST

ARMOR

WHEELS

TRAIL PACK

RAMPS & STANDS

CONTROLS

BRACING

DRIVE

SUSPENSION

BEARINGS

ENGINE

EXHAUST

ARMOR

WHEELS

PACKS & BAGS

TRAIL TOOLS

ENGINE



CLUTCH FRICTION PLATES 1

- + DP manufactures these with heat resistant friction material for fade-free performance
- + Ready to install, no need to soak in oil
- + Designed to ensure ultra-smooth power delivery
- + Sold in sets
- + \$36.95 - \$132.95

CLUTCH SPRINGS 2

- + Precision wound using the finest chrome silicone wire
- + Heat-treated and shot peened for maximum life
- + Designed for stronger performance without a harder lever pull
- + Sold in sets
- + \$10.95

STEEL CLUTCH PLATES 3

- + Made of steel, not aluminum like other clutch drive plates
- + Increased weight (3/4 lb.) over stock plates adds flywheel effect, aiding starting and traction
- + Will not fade or expand like aluminum plates
- + 300% longer life than aluminum plates
- + Sold in sets
- + \$15.95 - \$85.95

BILLET CLUTCH BASKETS 4

- + Improve clutch performance and heat dissipation
- + Precision machined from billet T-6 aircraft quality aluminum
- + Hard anodized for longer wear resistance than OEM design
- + Advanced design allows clutch assembly to spin true, creating less heat when clutch is disengaged
- + Some baskets come with kicker gear installed, some include cushions, see application chart
- + Made in the USA
- + \$173.95 - \$232.95

CLUTCH COMPONENTS	1 FRICTION PLATE SET	2 SPRING SET	3 STEEL PLATE SET	4 CLUTCH BASKET #
MAKE/MODEL/YEAR	FRICTION PLATE SET	SPRING SET	STEEL PLATE SET	CLUTCH BASKET #
GAS GAS				
200/250/300/400/450 97-07	I131-0082	I131-0093	M80-7104	-
HONDA				
CR80/85R 86-07	F70-5102	FHDS4-4	M80-7103	I132-0024
CRF/XR80R 83-07	F70-5171-3	FHDS102-4	M80-7111-2	-
CRF/XR100R 83-07	F70-5102-4	FHDS23-4	M80-7103-3	-
CR125R 87-99	F70-5104	FHDS24-5	M80-7101	-
CR125R 00-03	F70-5168-8	FHDS70-5	M80-7107	I132-0039 I132-0119 ^a
CR125R 04-07	F70-5168-8	I131-0094	M80-7107	I132-0039 I132-0119 ^a
CRF150F 03-07	I131-0083	I131-0095	I131-0103	-
CRF150R 07	I131-0664	I131-0665	I131-0103	I132-0176
XR200R 86-97	F70-5160	-	-	-
CRF230F 03-07	I131-0083	I131-0096	I131-0103	-
CR250R 85-89	F70-5101-7	FHDS28-6	M80-7100	-
CR250R 90-91	F70-5105	FHDS32-6	M80-7104	-
CR250R 92-01	F70-5105	FHDS32-6	M80-7104	I132-0050
CR250R 02-07	F70-5105	FHDS32-6	M80-7104	I132-0050 I132-0046 ^a I132-0119 ^a
CRF250R 04-07	I131-0084	I131-0098	I131-0104	I132-0039 I132-0119 ^a
CRF250X 04	I131-0244	I131-0245	I131-0104	I132-0039 I132-0119 ^a
CRF250X 05-07	I131-0244	I131-0246	I131-0104	I132-0039 I132-0119 ^a
XR250L 91-92	F70-5127-6	FHDS4-4	M80-7105-5	-
XR250R 86-95	F70-5127-6	FHDS4-4	M80-7105-5	-
XR250R 96-04	F70-5127-6	FHDS30-4	M80-7105-5	-
XR350R 83-85	F70-5127-6	FHDS4-4	M80-7105-5	-
XR400R 96-04	F70-5161	FHDS28-6	M80-7105-6	-
CRF450R 02	F70-5105	FHDS32-6	M80-7104	I132-0046 ^a
CRF450R 03	F70-5105	FHDS32-6	M80-7104	I132-0050 I132-0046 ^a

CLUTCH COMPONENTS	1 FRICTION PLATE SET	2 SPRING SET	3 STEEL PLATE SET	4 CLUTCH BASKET #
MAKE/MODEL/YEAR	FRICTION PLATE SET	SPRING SET	STEEL PLATE SET	CLUTCH BASKET #
HONDA (CON'T)				
CRF450R 04-07	F70-5105	I131-0097	M80-7104	I132-0050 I132-0046 ^a
CRF450X 05-07	F70-5105	I131-0097	M80-7104	I132-0050 I132-0046 ^a
CR500R 85-89	F70-5105	FHDS28-6	M80-7100	-
CR500R 90-01	F70-5105	FHDS28-6	M80-7104	-
XR600R 85-00	F70-5137	FHDS16-4	M80-7100	-
NX650 88-90	F70-5137	FHDS16-4	M80-7100	-
XR650L 93-07	F70-5137	FHDS16-4	M80-7100	-
XR650R 00-07	I131-0085	I131-0099	I131-0105	-
KAWASAKI				
KX60 85-03	F70-5300	FHDS18-6	M80-7302-4	-
KX65 00-07	F70-5300	FHDS82-6	M80-7314-4	-
KX80/100 88-97	F70-5307	FHDS35-5	M80-7305	-
KX80/85/100 98-07	F70-5345-6	FHDS74-4	M80-7313	I132-0032
KLX110 02-07	F70-5349-5	FHDS99-4	M80-7316-4	-
KLX125 03-06	F70-5200	I131-0100	I131-0117	-
KX125 94-99	F70-5320	FHDS65-4	M80-7312	I132-0022 ^a
KX125 00-02	F70-5320	FHDS71-4	M80-7312	I132-0022 ^a
KX125 03-05	F70-5320	FHDS96-5	M80-7312	I132-0048 ^a
KDX200/220 95-06	F70-5330	FHDS30-4	I131-0104	-
KX250 88-89	F70-5304	FHDS7-6	M80-7308	-
KX250 90-91	F70-5304	-	M80-7308	-
KX250 92-05	F70-5310	FHDS7-6	M80-7310	I132-0028
KX250 06-07	F70-5310	FHDS7-6	M80-7310	I132-0123
KX250F 04	I131-0087	I131-0101	I131-0106	I132-0054 ^a
KX250F 05	I131-0217	I131-0218	I131-0106	I132-0054 ^a
KX250F 06-07	I131-0217	I131-0218	I131-0106	I132-0121 ^b
KLX400 03	F70-5255-8	FHDS81-6	M80-7210-7	I132-0099
KX450F 06-07	I131-0509	I131-0510	I131-0511	I132-0122
KLX450R 08	-	-	-	I132-0122
KX500 87-04	F70-5304	FHDS7-6	M80-7308	-
KLR650 87-00	-	FHDS7-6	-	-
KL650 89-92	-	FHDS7-6	-	-

CLUTCH COMPONENTS	1 FRICTION PLATE SET	2 SPRING SET	3 STEEL PLATE SET	4 CLUTCH BASKET #
MAKE/MODEL/YEAR	FRICTION PLATE SET	SPRING SET	STEEL PLATE SET	CLUTCH BASKET #
KTM				
60/65SX 96-07	F70-5500-6	FHDS75-6	M80-7500	I132-0037
85/105SX 95-07	I131-0088	I131-0102	I131-0107	-
125SX/EXC 98-05	F70-5502-7	FHDS77-5	M80-7502	I132-0038
200EXC/EGS/MXC/XC/XC-W 98-06	F70-5502-7	FHDS77-5	M80-7502	I132-0038
200EXC/EGS/MXC/XC/XC-W 07	F70-5502-7	FHDS77-5	M80-7502	-
250SX/EXC/EGS/MXC 90-02	I131-0089	FHDS78-6	M80-7503	-
250SX/EXC/MXC 03	I131-0089	FHDS78-6	M80-7503	I132-0051
250SX/EXC/XC/XC-W 04-07	I131-0089	FHDS78-6	M80-7503	I132-0051
250SX-F 05-07	I131-0512	I131-0513	I131-0514	I132-0120 ^b
250XC-FIXCF-W 06-07	I131-0512	I131-0513	I131-0514	I132-0120 ^b
250EXC RFS 02-03	F70-5505-7	FHDS87-6	M80-7506-8	-
250EXC RFS 04-06	I131-0090	FHDS87-6	I131-0108	-
300/360/380SX/EXC/EGS/MXC 90-03	I131-0089	FHDS78-6	M80-7503	-
300EXC/MXC/XC/XC-W 04-07	I131-0089	FHDS78-6	M80-7503	-
400/450/520/525MXC/SX/EXC 02-03	F70-5505-7	FHDS87-6	M80-7506-8	-
400/540/620SX 98	F70-5504-8	-	-	-
400/520SX/MX/EXC 00-01	F70-5505-7	FHDS87-6	M80-7505-8	-
400/450/525EXC/MXC/XC/XC-W 04-07	I131-0090	FHDS87-6	I131-0108	-
450SXF 07-08	I131-0666	I131-0667	I131-0668	I132-0175 ^b
505SXF 07-08	I131-0666	I131-0667	I131-0668	I132-0175 ^a
SUZUKI				
RM65 03-05	F70-5300	FHDS82-6	M80-7314-4	-
RM80/85 89-07	F70-5200	FHDS14-5	M80-7205	-
DRZ110 02-06	F70-5349-5	FHDS99-4	M80-7316-4	-
DRZ125/L 03-07	F70-5200	I131-0100	I131-0117	-
RM125 92-07	F70-5207	FHDS27-5	M80-7207	I132-0021
DR200 86-06	-	I131-0040	-	-
DRZ250 02-07	I131-0515	FHDS98-5	M80-7212-6	-
RM250 88-91	F70-5204	FHDS32-6	M80-7204	-
RM250 92-93	-	FHDS32-6	M80-7204	-
RM250 94-95	F70-5204	FHDS32-6	M80-7204	-
RM250 96	F70-5213	FHDS32-6	M80-7204	I132-0047
RM250 97-02	F70-5213	I131-0517	I131-0518	I132-0047
RM250 03-05	I131-0091	I131-0517	I131-0518	I132-0047
RM250 06-07	I131-0747	I131-0746	I131-0518	I132-0047

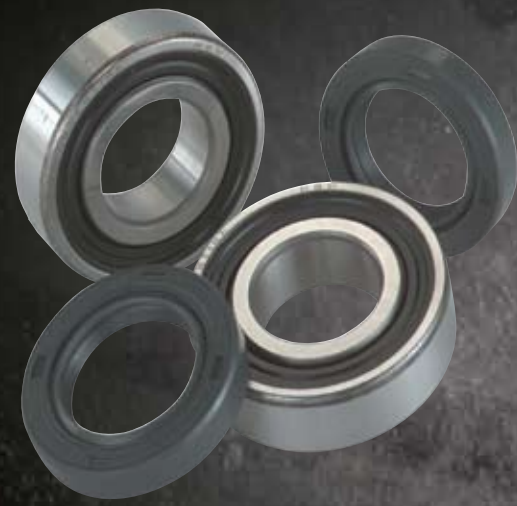
CLUTCH COMPONENTS	1 FRICTION PLATE SET	2 SPRING SET	3 STEEL PLATE SET	4 CLUTCH BASKET #
MAKE/MODEL/YEAR	FRICTION PLATE SET	SPRING SET	STEEL PLATE SET	CLUTCH BASKET #
SUZUKI (CON'T)				
RMX250 89-90	F70-5204	I131-0517	M80-7204	-
RMX250 91	F70-5204	-	M80-7204	-
RMX250 92-93-96	-	FHDS32-6	M80-7204	-
RMX250 94-97	F70-5204	FHDS32-6	M80-7204	-
RMZ250 04	I131-0087	I131-0101	I131-0106	I132-0054 ^b
RMZ250 05	I131-0217	I131-0218	I131-0106	I132-0054 ^b
RMZ250 06	I131-0217	I131-0218	I131-0106	I132-0121 ^a
RMZ250 07	I131-0669	I131-0670	I131-0671	I132-0174
DR350 90-99	-	I131-0040	-	-
DRZ400 (All Models) 00-07	F70-5255-8	FHDS81-6	M80-7210-7	I132-0099
RMZ450 05-07	I131-0519	I131-0520	I131-0521	I132-0089
YAMAHA				
YZ80 86-94	F70-5402	FHDS42-5	M80-7400	-
YZ80 95-01	F70-5402-7	FHDS42-5	M80-7400-6	-
YZ85 02-07	F70-5402-7	FHDS42-5	M80-7416-6	I132-0045
TTR125/L 02-03	F70-5462-5	FHDS42-4	M80-7408-4	-
TTR225 99-03	F70-5463-6	FHDS101-4	M80-7413	-
YZ125 93	F70-5406	FHDS80-5	M80-7405	-
YZ125 94-04	F70-5406	FHDS80-5	M80-7405	I132-0025
YZ125 05-07	F70-5406	FHDS80-5	M80-7405	I132-0088 ^a
TTR250 99-03	-	FHDS80-5	-	-
YZ/WR250 93-99	F70-5403	FHDS80-6	M80-7404	I132-0026 ^a
YZ250 00-01	F70-5403	FHDS73-6	M80-7404	I132-0026 ^a
YZ250 02-07	F70-5403	FHDS93-6	M80-7404	I132-0026 ^a
YZ250F 01-06	F70-5406-9	FHDS90-5	M80-7414-8	I132-0043
YZ250F 07	F70-5406-9	FHDS90-5	I131-0672	I132-0043
WR250F 01-07	F70-5406-9	FHDS90-5	M80-7414-8	I132-0043
XT350 85-96	F70-5410	-	-	-
YZ/WR400F 98-00	F70-5456	FHDS49-5	M80-7406	I132-0033
YZ/WR426F 00	F70-5457-9	FHDS49-6	M80-7410	-
YZ/WR426F 01-02	F70-5457-9	FHDS49-6	M80-7410	-
WR450F 03	F70-5457-9	FHDS49-6	M80-7410	-
WR450F 04-07	I131-0092	FHDS49-6	M80-7410	I132-0053
YZ450F 03	I131-0092	FHDS49-6	M80-7410	-
YZ450F 04	I131-0092	FHDS49-6	M80-7410	I132-0053
YZ450F 05-06	I131-0092	I131-0243	M80-7410	I132-0053
YZ450F 07	I131-0092	I131-0673	I131-0728	I132-0053

^aWith kickstart gear

^bWith cushions



BEARINGS



WHEEL BEARING/SEAL KITS 1

- + Premium quality, high-speed bearings
- + EMQ standard seals
- + Kits include all bearings and seals required to do a wheel bearing rebuild
- + Kits are per wheel
- + \$6.95 - \$54.95 (Fitment chart pages 104 - 107)



STEERING STEM BEARING KITS 2

- + Designed as a drop-in replacement to upgrade OEM ball-type bearings to taper bearings, or a high quality replacement if your bike comes with taper bearings stock
- + Tapered roller bearings provide decreased maintenance along with less wear, smoother operation and longer life
- + Kits come complete with both upper and lower taper bearing cups, cones, and most include top and bottom seals
- + \$39.95 (Fitment chart pages 104 - 107)



SWINGARM BEARING KITS 3

- + 52100 Bearing steel is used in these rebuild kits for motocross, off-road, and dual purpose bikes
- + Kits include all the bearings, seals, shafts, and spacers required for a complete rebuild
- + Thrust bearings are replaced with Teflon bearings which perform better in dirt and water
- + Expansive application chart covers bikes from the 70's to present
- + \$27.95 - \$71.95 (Fitment chart pages 104 - 107)



LINKAGE BEARING KITS 4

- + Include the lower shock bearing and all other parts necessary to rebuild the suspension linkage
- + 52100 Bearing steel and hard plated spacers resist wear and rust
- + Each kit includes: the lower shock bearing, all the shafts, seals, and spacers in the link, link arm, and lower shock mount
- + \$37.95 - \$79.95 (Fitment chart pages 104 - 107)



UPPER AND LOWER SHOCK BEARING KITS 5

- + Kit includes the upper shock bearing, seals, spacers, and pins (if required) to rebuild the upper shock link
- + Premium design and construction stands up to tough conditions
- + Older bearing and seal designs updated to the latest in bearing technology
- + \$19.95 (Fitment chart pages 104 - 107)



CRANK BEARING/SEAL KIT 6

- + Precision Japanese crank bearings
- + Kits contain right and left crankshaft bearings, 2-stroke kits contain outer seals
- + Seals designed with a fluorocarbon lip to reduce friction
- + \$31.95 - \$64.95 (Fitment chart pages 104 - 107)



- RACEWEAR
- YOUTH
- OUTERWEAR
- SIZING CHART
- RIDER ACCESSORIES
- PACKS & BAGS
- CASUALS
- CONTROLS
- BRAKING
- DRIVE
- BEARINGS
- ENGINE
- ELECTRICAL
- EXHAUST
- ARMOR
- WHEELS
- TRAIL PACKS
- RAMPS & STANDS
- CONTROLS
- BRAKING
- DRIVE
- SUSPENSION
- BEARINGS
- ENGINE
- ELECTRICAL
- EXHAUST
- ARMOR
- WHEELS
- RAMPS & COVERS
- TRAIL TOOLS
- PROMO