

EXHAUST



MOOSE RACING PIPE GUARDS BY ELINE

- + Moose Racing pipe guards offer the most protection, style, and durability on the market
- + Custom molded to fit perfectly every time
- + Carbon fiber, Kevlar™, fiberglass, and high temp resins yield an exceptional guard. 8 times stronger, 2 times stiffer, yet 1.5 times lighter than aluminum
- + The level of heat reached by 4-strokes causes pipes to ding easily. It can also burn your pants and leg. End the hassle by installing a Moose Racing pipe guard
- + Our pipe guards distribute impact over a large area, aluminum guards cannot duplicate this effect
- + Made in the USA
- + \$99.95

PIPE GUARDS BY ELINE			
MAKE/MODEL/YEAR	YOSH/STOCK	PRO-CIRCUIT	FMF
ARCTIC CAT			
DVX400 03-07	1861-0114	-	1861-0116
HONDA			
TRX400EX 99-07	1861-0105	1861-0106	1861-0106
TRX450R 04-05	1861-0108*	1861-0109	1861-0110
KAWASAKI			
KFX400 03-07	1861-0114	-	1861-0116
SUZUKI			
LTZ400 03-07	1861-0114	-	1861-0116
YAMAHA			
YFZ450 04-06	1861-0111	1861-0112	1861-0123

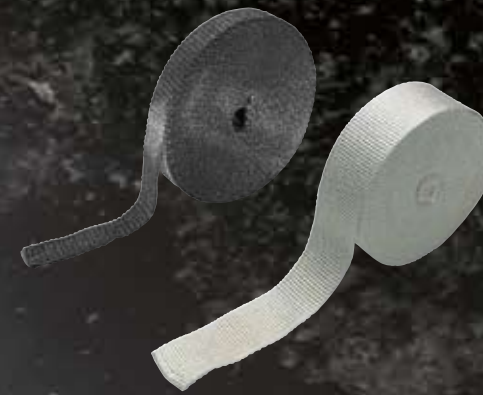
*Fits stock pipe only



STRAIGHT SECTION HEAT SHIELD

- + Uses the same carbon Kevlar™ construction as custom molded pipeguards and includes stainless mounting brackets
- + The straight section heat shield is designed to fit over the section of pipe that contacts your leg and boot
- + Many aftermarket manufacturers leave out a heat shield, use ours before you ruin your gear
- + Available in two sizes to fit virtually all 4-stroke headers on bikes and ATVs
- + Made in the USA
- + \$69.95

STRAIGHT SECTION HEAT SHIELD	
DESCRIPTION	PART #
Straight Section Heat Shield 6"	1861-0148
Straight Section Heat Shield 8"	1861-0147



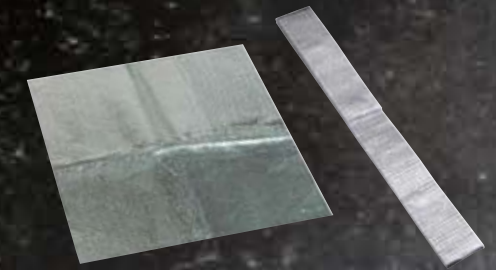
EXHAUST WRAP

- + Ceramic cloth wrap available in black and tan
- + Stable at temperatures up to 2000 degrees Fahrenheit
- + Insulates exhaust header pipes to protect you or your machine from intense heat
- + Generous size roll is enough to wrap one long header or critical areas on multiple exhausts
- + Made in the USA
- + 1"x50' Tan 1861-0339 \$39.95
- + 2" x 50' Tan M30050 \$64.95
- + 1"x50' Black 1861-0340 \$46.95
- + 2"x50' Black 1861-0341 \$69.95

EXHAUST TAPE

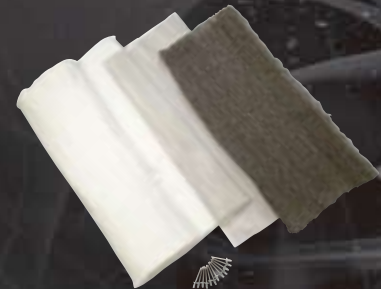
- + High-temperature Gore-Tex™ Teflon® exhaust tape with adhesive
- + Eliminates exhaust leaks between header pipe and cylinder head
- + Package includes two strips of tape, each measure .020" thick, 1" W and 8"L
- + \$16.95

EXHAUST TAPE	PART#
	M703



HEAT SHIELD

- + Aluminized heat barrier with adhesive backing
- + Foil-coated ceramic cloth adheres to body panels to protect plastic or fiber glass from engine or exhaust heat
- + One 18" x 18" sheet provides 324 square inches of superior heat protection
- + Also available in a long narrow strip, sized 1.5" x 36"
- + Made in the USA
- + 18" X 18" M30051 \$22.95
- + 1.5" X 36" 1861-0153 \$8.95



UNIVERSAL STAINLESS RE-PACK KIT

- + Louder exhaust does not mean more horsepower
- + Blown-out packing causes exhaust turbulence and increased backpressure, this reduces horsepower
- + Re-pack your silencer with this pro-quality, three layer packing system and restore the power you've blown out
- + Also great for getting in compliance with new sound laws
- + Kit contains 1/4" thick 60" x 20" glass mat, 7" x 20" stainless wool, 8" x 20" stainless mesh, twelve 3/16" rivets, and full instructions
- + Made in the USA
- + \$21.95

UNIVERSAL STAINLESS STEEL REPACK KITS	PART#
	1860-0037



COMPETITION MUFFLER PACKING

- + The best low-weight, high-quality packing on the market
- + 25% lighter than stock packing
- + Quieter and longer lasting than fiberglass packing
- + Sold in 250 or 500 gram bag
- + 50 gram: \$17.95
- + 500 gram: \$25.95

COMPETITION MUFFLER PACKING	PART#
250g	M702
500g	1860-0060



FIBERGLASS MUFFLER PACKING

- + Repack blown out silencer for quieter running and more power
- + Long filament fiberglass made especially for muffler packing
- + Measures 11" x 16", more than enough to repack virtually any muffler
- + \$6.95

FIBERGLASS MUFFLER PACKING	PART#
	M701



EXHAUST SPRINGS

- + Stainless steel construction gives superior strength and appearance
- + Swivel hook design eliminates binding, extending spring life
- + Available for most late-model 2-stroke and 4-stroke models
- + Sold in packs of two
- + \$11.95

EXHAUST SPRINGS			
SPRING LENGTH	PART #	SPRING LENGTH	PART #
38MM	M7713	75MM	M7711
57MM	M7714	80MM	M7717
60MM	M7715	83MM	M7712
63MM	M7709	90MM	M7718
67MM	M7710	95MM	M7719
70MM	M7716	100MM	M7720

COMPETITION REPACK CARTRIDGE

- + The latest in muffler-packing technology
- + Slip-on one-piece cartridge
- + Offers consistent packing density
- + Cuts installation time in half
- + 25% lighter than stock packing
- + Lasts 5-10 times longer than glass packing
- + Outer casing made from carbon-coated fiber that remains intact for removal of used cartridge
- + \$20.95 - \$22.95



COMPETITION REPACK CARTRIDGE							
AFTERMARKET 4-STROKE EXHAUSTS	LENGTH OF MUFFLER SHELL						
	11"	13"	14"	15"	16"	17"	18"
BIG GUN							
Race / Quiet / Utility	-	-	-	1860-0093	-	1860-0094	-
BILLS PIPES							
Oval	-	-	-	1860-0093	-	1860-0094	-
Round	-	-	1860-0095	-	1860-0096	1860-0054	-
FMF							
T4 (original round)	-	-	MFRR4-0014	1860-0093	MFRR4-0016	1860-0094	-
Power Core 4 (Round Core)	-	-	-	1860-0053	-	-	-
Power Core 4 (Square Core)	-	-	-	1860-0051	-	-	-
Q Series	MFRR3-0011	-	-	-	-	-	-
GYTR							
Oval Off Road Muffler	-	-	-	1860-0096	-	1860-0092	-
PRO CIRCUIT							
T4 (3.3" Canister)	-	-	MFRR3-0014	-	MFRR3-0016	-	-
T4, T4, 496 (4" Canister)	-	-	1860-0095	1860-0053	1860-0096	1860-0054	-
WHITE BROTHERS							
Aluminum / Carbon Pro	-	-	-	1860-0053	-	-	-
E-Series	-	MFRE1-0013	1860-0095	MFRE1-0015	1860-0096	1860-0054	1860-0055
E2	-	-	1860-0095	1860-0053	1860-0096	1860-0054	1860-0055
R4	-	MFRR4-0013	MFRR4-0014	1860-0093	MFRR4-0016	1860-0094	-

COMPETITION REPACK CARTRIDGE					
2-STROKE EXHAUSTS	LENGTH OF MUFFLER BODY (CANISTER ONLY, NOT INCLUDING ENDCAPS)				
	7.5"	9"	10"	11.5"	13"
BILL'S PIPES					
125 Race Silencer	MFRR1-0075	MFRR1-0009	-	-	-
250 Race Silencer	-	MFRR2-0009E	MFRR2-0010	MFRR2-0115	-
DOMA					
Race Silencers	MFRR2-0075E	MFRR2-0009E	MFRR2-0010	MFRR2-0115	-
FMF					
Power Core 2 / Titanium 2	MFRD1-0075	MFRD1-0875	MFRD1-1025	MFRD1-1175	MFRD1-0135
Turbine Core 2/Q Two Stroke*	MFRD1-0075	MFRD1-0875	MFRD1-1025	MFRD1-1175	MFRD1-0135
PRO CIRCUIT					
R304 Std. / R304 Race	MFRR2-0075E	MFRR2-0009E	MFRR2-0010	MFRR2-0115	MFRR2-0013
296 Silencer*	MFRD1-0075	MFRD1-0875	MFRD1-1025	MFRD1-1175	MFRD1-0135

Part numbers given above are for unmodified aftermarket exhausts. If the muffler has been modified from the original length and falls between lengths available on the chart order the next longest cartridge available for your muffler.

*SPARK ARRESTOR REPACKS

When choosing a repack kit for a spark arrestor silencer, subtract 5.5" from the length of the muffler body for the actual packable length and order based on that length. Example: A FMF Turbine Core 2 with a 14" long body will have a 8.5" packable length. Order the next longest length which is a MFRD1-0875. Use this rule for Pro Circuit also.

- FACEWEAR
- YOUTH
- OUTERWEAR
- SIZING CHART
- BIKER ACCESSORIES
- BIKES & BAGE
- CARBONS
- CONTROLS
- GEARING
- GLIDE
- GRANNING
- ENGINE
- ELECTRICAL
- EXHAUST
- ARMOR
- WHEELS
- TRAIL TOOLS
- RAMPS & STANDS
- CONTROLS
- GRANNING
- GLIDE
- SUSPENSION
- GRANNING
- PROMO
- ELECTRICAL
- EXHAUST
- ARMOR
- WHEELS
- RAMPS & STANDS
- PROMO



ARMOR

V-FRONT BUMPER 1-2

- + Styled to flow with the natural lines while guarding vital front parts
- + Made from lightweight 6061 T-4 aluminum
- + 1" diameter tubing
- + Available for most popular ATVs
- + \$106.95 - \$117.95

PRO-PLATE BUMPER 3

- + Made of aircraft-quality T-4 aluminum
- + 1" diameter tubing
- + Offers style and superior protection
- + Hell-arc welded and brushed to a satin finish
- + Bolts on in minutes
- + \$109.95

RACE BUMPERS	1	2	3
MAKE/MODEL/YEAR	V-FRONT BUMPER (ALLOY)	V-FRONT PRO BUMPER (BLACK)	PLATE FRONT BUMPER
HONDA			
TRX400EX 99-07	0530-0190	0530-0548	0530-0181
TRX450R 04-07	0530-0191	0530-0549	0530-0182
KAWASAKI			
KFX400 03-06	0530-0197	0530-0554	0530-0188
KFX450R 07	0530-0739	0530-0740	0530-0738
KFX700V-FORCE 04-07	0530-0198	-	0530-0189
POLARIS			
OUTLAW 500 06-07	0530-0505	0530-0552	0530-0504
PREDATOR 500 03-07	0530-0196	-	0530-0187
SUZUKI			
LTZ400 03-07	0530-0197	0530-0554	0530-0188
LT450R 06-07	0530-0458	0530-0553	0530-0457
YAMAHA			
YFS200 Blaster 88-06	0530-0192	-	0530-0183
YFM350 Raptor 04-07	0530-0267	-	0530-0268
YFZ350 Banshee 87-06	0530-0193	-	0530-0184
YFZ450 04-07	0530-0194	0530-0550	0530-0185
YFM660 Raptor 01-05	0530-0195	-	0530-0186
YFM700 Raptor 06-07	0530-0453	0530-0551	0530-0452

FRONT BUMPER 4

- + Perfect for the track or woods riding
- + Offers style and protection
- + 1" diameter with .120" wall tubing made from the toughest and most resilient aluminum available
- + \$119.95

FRONT BUMPER	FRONT BUMPER
MAKE/MODEL/YEAR	FRONT BUMPER
ARCTIC CAT	
DVX400 03-06	0530-0667
HONDA	
TRX400EX 01-06	0530-0668
TRX450R 04-07	0530-0668
KAWASAKI	
KFX400 03-06	0530-0667
KFX450 07	0530-0671
SUZUKI	
LTZ400 03-06	0530-0667
LTR450 06-07	0530-0667
YAMAHA	
YFZ450 04-07	0530-0669
RAPTOR 700 06-07	0530-0670



ALLOY NERFBARS 1

- + Made of the best 6061 T-4 aluminum
- + 1" diameter tubing
- + Designed to bolt on easily, without the use of U-bolts
- + Black webbing comes with Moose Racing logo
- + Available for most popular ATVs
- + \$176.95

HEEL GUARD NERFBARS 2

- + Incorporate the heel guard right into the nerfbars for a cleaner finish
- + Made of aircraft quality 6061 T-4 aluminum
- + 1" diameter tubing
- + The heel guards are both strong and lightweight
- + Moose Racing logo laser cut into the aluminum for an ultraclean look
- + Designed to bolt on easily, without the use of U-bolts
- + \$266.95

RACE PEG NERFBARS WITH HEEL GUARD 3-4

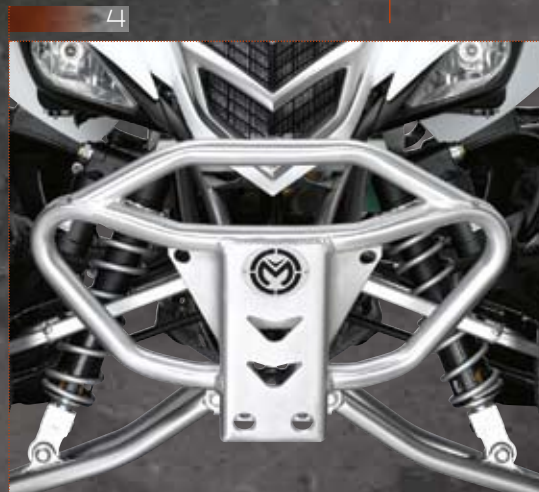
- + Strong and lightweight nerf bars with built in footpeg and heel guard
- + Made of aircraft-quality 6061 T-4 aluminum
- + 1 1/4" diameter tubing
- + Black webbing comes with Moose Racing logo
- + Moose Racing logo laser cut into the aluminum for an ultra clean look
- + Designed to bolt on easily
- + Available for most popular ATVs
- + \$345.95 - \$371.95



STAINLESS STEEL ATV FOOTPEGS

- + Solidly built cast stainless steel footpegs made in the USA
- + Much more durable than aluminum pegs
- + Gently radiused, convex design allows for easy weight transfer
- + No crossbraces for better mud clearing
- + Kick up design and multiplane teeth for maximum traction
- + Add your choice of nerfs for better performance than racepeg systems
- + Powder coated black with polished Moose Racing logos
- + \$219.95

STAINLESS STEEL ATV FOOTPEGS	BLACK POWDER-COATED
MAKE/MODEL/YEAR	BLACK POWDER-COATED
HONDA	
TRX450R 04-07	1620-0351
YAMAHA	
YFZ350 BANSHEE 87-06	1620-0352
YFZ450 04-07	1620-0354
YFM660-700 RAPTOR 01-07	1620-0353



MAKE/MODEL/YEAR	1			2			3		4	
	ALLOY NERFBARS	REPLACEMENT LH NET PART #	REPLACEMENT RH NET PART #	NERFBARS W/HEEL GUARD	REPLACEMENT LH NET PART #	REPLACEMENT RH NET PART #	RACE PEG NERFBARS W/HEEL GUARD	BLACK RACE PEG NERFBARS W/HEEL GUARD	REPLACEMENT LH NET PART #	REPLACEMENT RH NET PART #
HONDA										
TRX400EX 99-07	0530-0199	0530-0688	0530-0688	0530-0208	0530-0702	0530-0703	0530-0359	0530-0555	0530-0704	0530-0705
TRX450R 04-07	0530-0200	0530-0688	0530-0688	0530-0209	0530-0702	0530-0703	0530-0360	0530-0556	0530-0704	0530-0705
KAWASAKI										
KFX400 03-06	0530-0206	0530-0700	0530-0701	0530-0215	0530-0702	0530-0703	0530-0361	0530-0561	0530-0704	0530-0705
KFX450R 07	0530-0741	-	-	0530-0742	-	-	0530-0743	0530-0744	-	-
KFX700 04-06	0530-0207	0530-0700	0530-0701	0530-0216	0530-0702	0530-0703	-	-	-	-
POLARIS										
PREDATOR 500 03-04	0530-0205	0530-0691	0530-0692	0530-0214	0530-0693	0530-0694	-	-	-	-
OUTLAW 500 06-07	0530-0506	0530-0704	0530-0705	0530-0507	0530-0704	0530-0705	0530-0508	0530-0559	0530-0704	0530-0705
SUZUKI										
0530-0206	0530-0700	0530-0701	0530-0215	0530-0702	0530-0703	0530-0361	0530-0561	0530-0704	0530-0705	-
0530-0459	0530-0689	0530-0690	0530-0460	0530-0689	0530-0690	0530-0461	0530-0560	0530-0704	0530-0705	-
YAMAHA										
YFS200 Blaster 88-06	0530-0201	0530-0695	0530-0696	0530-0210^	0530-0695	0530-0696	-	-	-	-
YFZ350 Banshee 87-06	0530-0202	0530-0697	0530-0697	0530-0211^	0530-0695	0530-0696	-	-	-	-
YFM350 Raptor 04-07	0530-0269	0530-0698	0530-0699	0530-0270	0530-0698	0530-0699	-	-	-	-
YFZ450 04-07	0530-0203	0530-0700	0530-0701	0530-0212	0530-0702	0530-0703	0530-0362	0530-0557	0530-0704	0530-0705
YFM660 Raptor 01-05	0530-0204	0530-0700	0530-0701	0530-0213	0530-0702	0530-0703	0530-0363	0530-0563	0530-0704	0530-0705
YFM700 Raptor 06-07	0530-0454	0530-0704	0530-0705	0530-0455	0530-0704	0530-0705	0530-0456	0530-0558	0530-0704	0530-0705

*MUST USE OEM HEELGUARD

- RACEWEAR
- YOUTH
- OUTERWEAR
- SIZING CHART
- RIDER ACCESSORIES
- TRUCKS & BUSES
- CARS
- CONTROLS
- BRAKING
- DRIVE
- DEFININGS
- ENGINE
- ELECTRICAL
- EXHAUST
- ARMOR
- WHEELS
- TRAIL TOOLS
- RAMPS & STANDS
- CONTACTS
- BRANDS
- DRIVE
- SUSPENSION
- BRANDS
- PROMO
- ELECTRICAL
- EXHAUST
- ARMOR
- WHEELS
- RAMPS & STANDS
- TRAIL TOOLS
- PROMO

ARMOR

SWINGARM SKIDPLATES 1

- + Heavy-duty aluminum skid plate protects your sprocket, swingarm and brake rotor from rocks and debris
- + Rear Shock Linkage Cover \$42.95
- + \$96.95 - \$158.95

BULLET LINE HEAVY DUTY SWINGARM SKIDPLATES (COLUMN I FOOTNOTE A)

- + Made from 1/4" extrude 6061 T-6 aluminum
- + Integrated long-wearing chain guide
- + Clear anodized finish
- + \$52.95 - \$122.95

FULL BODY SKIDPLATES 2

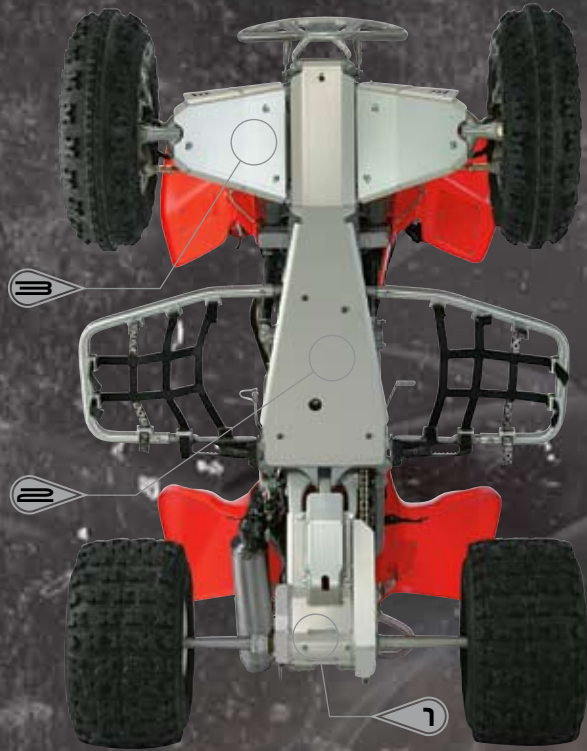
- + Heavy-duty aluminum skid plate protects the frame, engine case and undercarriage from rocks and debris
- + Includes oil drain hole
- + \$58.95 - \$178.95

ALUMINUM A-ARM GUARDS 3

- + Protection against rocks and sticks
- + Protects CV joint boots
- + \$61.95 - \$96.95

MAKE/MODEL/YEAR	1 SWINGARM SKIDPLATE	2 FULL-BODY SKIDPLATE	3 A-ARM GUARDS
BOMBARDIER			
D5650 00-03	M800-80 ^A	M900-97	-
HONDA			
TRX250R 1986	M800-00	M900-10	-
TRX250R 87-89	M800-03	M900-10	-
TRX250X 87-92	M800-06	M900-15	M700-01
TRX250EX 01-07	M800-09	M900-85	-
TRX300EX 93-07	M800-06	M900-15	M700-01
TRX400EX 99-07	M800-15	M900-35	M700-04
TRX400EX 99-07	0505-0097 ^A	-	-
TRX450R 04-07	0505-0129 ^A	0505-0130	0430-0023
KAWASAKI			
Mojave 250 87-04	M800-21	-	M700-20
Lakota 300 98-04	M800-21	M900-64	M700-64
KFX400 03-06	M800-56 ^A	M900-64	M700-64
(REAR SHOCK LINKAGE COVER KFX400)	M800-84	0505-0090	-
KFX700 V-FORCE 03-06	0505-0089	0505-0090	0430-0005
POLARIS			
Trailblazer 250 98-04	M800-36	0505-0096	M700-50
Trailblazer 250 05-06	0505-0393	0505-0096	M700-50
Scrambler 400/500 2X4 & 4X4 98-04	M800-36	M800-89	M700-50
Scrambler 400/500 2X4 & 4X4 05-06	0505-0393	M800-89	M700-50
Predator 500 03	-	0505-0096	0430-0010
Predator 500 04	0505-0131 ^A	0505-0096	0430-0010
SUZUKI			
LT250R 85-86	M800-45	-	-
LT250R 87-92	M800-48	M900-55	-
LTZ250 03-07	0505-0091	0505-0092	-
Ozark 250 02-07	0505-0091	0505-0092	-
LTZ400 03-07	M800-56 ^A	M900-64	M700-64
(REAR SHOCK LINKAGE COVER LTZ400)	M800-84	-	-
LT450R 06-07	0505-0425 ^A	0506-0268	0430-0245
LT500R 87-90	M800-49	-	-
YAMAHA			
Blaster 88-06	M800-54	M900-65	M700-10
Warrior 87-88	M800-57	M900-75	M700-11
Warrior 89-04	0505-0098 ^A	M900-75	M700-11
Raptor 350 05-06	0505-0279	0506-0186	M700-11
Wolverine 350 89-05	M800-63	M900-70	M700-12
Banshee 350 87-06	0505-0099 ^A	M900-80	M700-13
Wolverine 450 06-07	M800-65	0506-0269	M700-72
YZF450 04-05	0505-0093 ^A	0505-0094	0430-0009
YZF450 06-07	0505-0426 ^A	0505-0094	0430-0009
Raptor 660 01-05	M800-69	M900-90	M700-16
Raptor 660 01-05	0505-0100 ^A	-	-
Raptor 700 06-07	0505-0394	0506-0242	0430-0009

^ABullet-line heavy duty skidplate



WIDE GRAB BAR

- + Increase available grab space
- + Makes pulling your ATV out of the mud easier
- + Replace stock grab bar and comes with an antenna whip mount
- + Made from lightweight aluminum
- + Bolts on easily
- + \$76.95 - \$88.95

MAKE/MODEL/YEAR	1 ALLOY	2 BLACK POWDER-COATED
HONDA		
TRX450R 04-05	0502-0044	0502-0134
TRX450R 06-07	0502-0140	0502-0142
KAWASAKI		
KFX400 04-06	0502-0050	0502-0139
KFX450R 07	0502-0192	0502-0193
KFX700 V-FORCE 04-07	0502-0051	-
POLARIS		
OUTLAW 500 06-07	0502-0133	0502-0137
PREDATOR 500 03-07	0502-0049	-
SUZUKI		
LTZ400 04-07	0502-0050	0502-0139
LT450R 06-07	0502-0120	0502-0138
YAMAHA		
YFS200 BLASTER 88-06	0502-0045	-
YFM350 RAPTOR 04-07	0502-0071	-
YZF350 BANSHEE 87-06	0502-0046	-
YZF450 04-05	0502-0047	0502-0135
YZF450 06-07	0502-0141	0502-0143
YFM660 RAPTOR 01-05	0502-0048	-
YFM700 RAPTOR 06-07	0502-0119	0502-0136



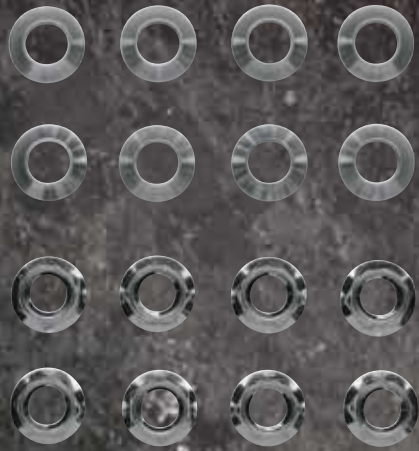
AIRFLOW MESH KIT

- + Customize your bike, quad, or sled
- + Use mesh to cover radiators, oil coolers, or bodywork vents
- + Add style and protection to your ride
- + Available in three styles: square, diamond, and honeycomb
- + Includes one 18" x 18" panel of aluminum mesh and full instructions
- + \$38.95

AIRFLOW MESH KIT	PART#
SQUARE	1901-0121
DIAMOND	1901-0122
HONEYCOMB	1901-0123
ROUND	1901-0153
OVAL	1901-0154

- FACEWEAR
- YOUTH
- OUTERWEAR
- SIZING CHART
- RIVER ACCESSORIES
- TRUCKS & BUSES
- CAMIONS
- CONTROLS
- BEARINGS
- DRIVE
- BEARINGS
- ENGINE
- ELECTRICAL
- EXHAUST
- ARMOR
- WHEELS
- TRAIL TOOLS
- RAMP & COVERS
- TRAIL TOOLS
- TRUCKS

WHEELS



UNIVERSAL LOCKING LUG NUTS

- + Includes eight M10, metal-locking flange nuts that won't vibrate loose
- + Works for flat and tapered lug nut applications
- + Tapered bushings (included) adapt nuts to replace tapered lugs when necessary
- + Narrow enough to fit all aftermarket wheels
- + Sold in packs of 8
- + \$9.95

LOCKING LUG NUTS	PART#
	0223-0044



LUG NUTS

- + For front and rear of all ATVs with 10mm 1.25 pitch
- + Available in polished aluminum or black
- + Available in 4 or 16 packs
- + Lug nuts with tapered ends fit most OEM wheels, and lug nuts with flat ends fit most aftermarket wheels
- + \$14.95 - \$64.95

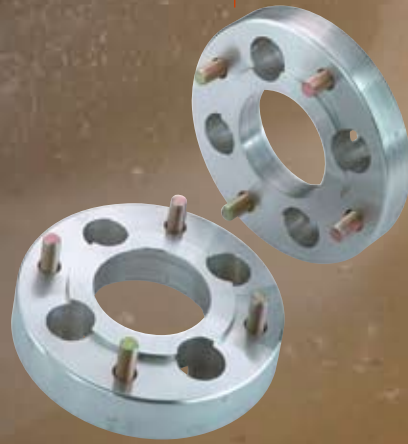
LUG NUTS	
BLACK	PART #
Tapered Nuts	
4-PK	0223-0005
16-PK	0223-0007
Flat Nuts	
4-PK	0223-0009
16-PK	0223-0011
POLISHED	
Tapered Nuts	
4-PK	0223-0006
16-PK	0223-0008
Flat Nuts	
4-PK	0223-0010
16-PK	0223-0012



ICE TIRE WRAP

- + Keep your ice screws sharp with the burliest tire wrap on the market
- + Outer shell constructed from heavy-duty 1200/600 PVC coated ripstop
- + Interior center panel/core features an extremely durable webbing material to prevent metal studs from losing their edge
- + Side-walls constructed with an elastic cord to create a formed fit around tire
- + Metal grommets and heavy-duty hooks for easy and secure closure
- + \$42.95

ICE TIRE WRAP	PART #
Fits up to 18" tall tire and 8" wide pattern	0362-0001
Fits up to 20" tall tire and 10" wide pattern	0362-0002
Fits up to 20" tall tire and 12" wide pattern	M4573
Fits up to 21" tall tire and 8" wide pattern	0362-0007



WHEEL SPACER KIT

- + Increases wheel stability by moving wheels out 1"
- + Eliminates rubbing against shocks, struts and exhaust
- + \$79.95

WHEEL SPACER KIT	PART #
DESCRIPTION	
Yamaha Blaster Conversion Kit	MUD6518
(changes current pattern of 4/100 to 4/115 to allow for new rims)	



CHRIS BORICH

- RACEWEAR
- YOUTH
- OUTERWEAR
- SIZING CHART
- KIDDER ACCESSORIES
- FACE & MASKS
- GLOVES
- CONTROLS
- BRAKING
- DRIVE
- REARVIEW
- FINISH
- ELECTRICAL
- EXHAUST
- ARMOR
- WHEELS
- TIRE PACKS
- TRIMPS & STANDS
- CONTROLS
- BRAKING
- DRIVE
- SUSPENSION
- BEARINGS
- ENGINE
- ELECTRICAL
- EXHAUST
- ARMOR
- WHEELS
- TRIMPS & STANDS
- TRAIL TOOLS
- PROMO

RAMPS/COVERS



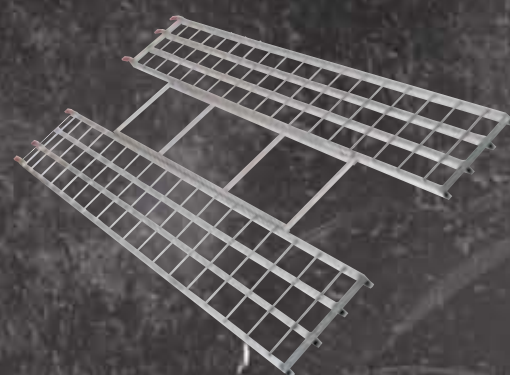
ALUMINUM BI-FOLD RAMPS

- + Durable and lightweight ramp is weather resistant and comes with a sturdy aluminum frame
- + E-Z grip rubber truckrests and nylon safety straps
- + Ramp is 48" W X 71" L
- + Maximum distributed load capacity of 1000 lbs.
- + \$166.95

WARNING: Do not ride ATV's or motorcycles on ramp at anytime

ALUMINUM BI-FOLD RAMPS

DESCRIPTION	PART#
48" W X 71" L bi-fold ramp	MUDRAMP4871



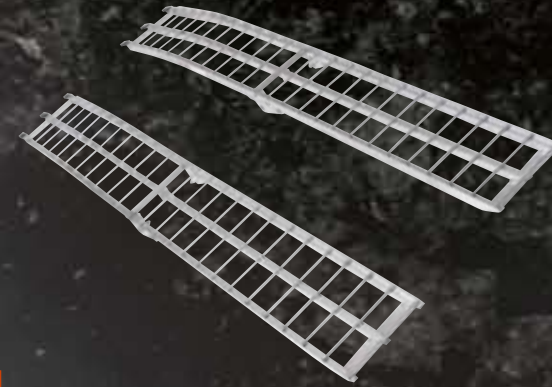
ALUMINUM TRI-FOLD RAMPS

- + Durable and lightweight ramp is weather resistant and comes with a sturdy aluminum frame
- + E-Z grip rubber truckrests and nylon safety straps
- + Ramp is 46" W X 85" L
- + Maximum distributed load capacity of 1200 lbs.
- + \$209.95

WARNING: Do not ride ATV's or motorcycles on ramp at anytime

ALUMINUM TRI-FOLD RAMPS

DESCRIPTION	PART #
46" W X 85" L tri-fold ramp	MUDRAMP4685



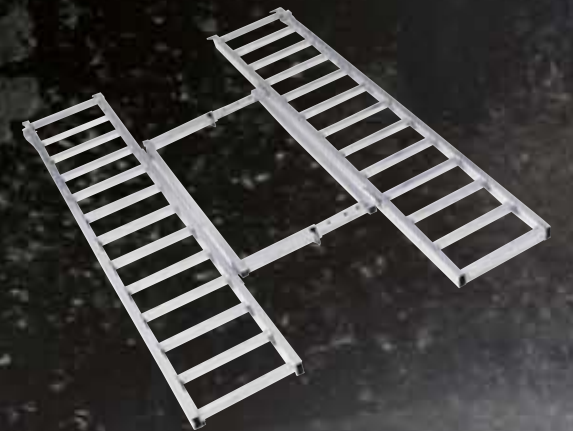
ARCHED ALUMINUM FOLDING RAMPS

- + Built with a sturdy aluminum frame, this ramp is durable, lightweight, and weather resistant
- + E-Z grip rubber truckrests and nylon safety straps
- + Ramp is 12" W X 90" L
- + Maximum distributed load capacity of 1200 lbs.
- + Sold in pairs
- + \$199.95

WARNING: Do not ride ATV's or motorcycles on ramp at anytime

ARCHED ALUMINUM FOLDING RAMPS

DESCRIPTION	PART #
12" W X 90" L ramp pair	MUDRAMP1290P



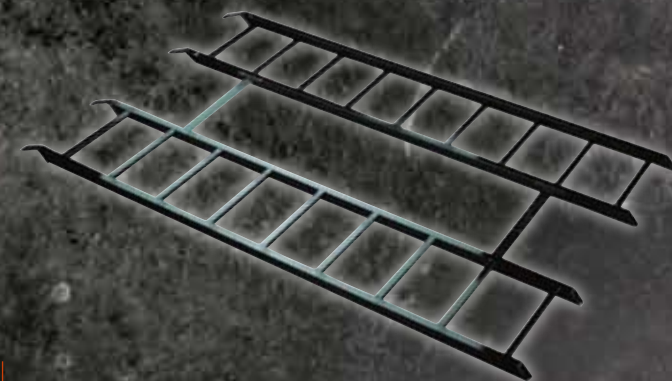
TRI-FOLD ADJUSTABLE ALUMINUM RAMPS

- + Durable and lightweight ramp is weather resistant and comes with a sturdy aluminum frame
- + 76" long with an adjustable width of 42" to 52"
- + Maximum distributed load capacity of 1250 lbs.
- + Bar style surface for better traction
- + \$179.95

WARNING: Do not ride ATV's or motorcycles on ramp at anytime

TRI-FOLD ADJUSTABLE ALUMINUM RAMPS

DESCRIPTION	PART #
42"-52" W X 76" L	3910-0008



STEEL TRI-FOLD LOADING RAMPS

- + Durable steel construction
- + Ramp is 43" W X 70" L
- + Extra-long ramp is 43" W X 84" L
- + Both ramps fold to 14" W
- + Maximum distributed load capacity of 1000 lbs.
- + Sold as pairs
- + \$146.95 - \$170.95

WARNING: Do not ride ATV's or motorcycles on ramp at anytime

STEEL TRI-FOLD LOADING RAMPS

DESCRIPTION	PART #
43" W X 70" L ramp	MUDRAMP-S70
43" W X 84" L ramp	MUDRAMP-S84



TRAILERABLE ATV COVER

- + Keeps your ATV clean and safe while trailering it
- + Heavy-duty nylon straps hold the cover on the ATV
- + Four tie down locations allow for extra security
- + Burliest trailer cover on the market
- + Made of tough 600 denier weather resistant vinyl backed UV-treated polyester
- + Will not fade, shrink, mildew or stretch
- + Double stitched hems
- + Heavy-duty elastic shock cord in the hem
- + Standard size - \$80.95
- + XL - \$90.95
- + 2X - \$104.95

TRAILERABLE ATV COVER

DESCRIPTION	PART #
STANDARD	MUDC813
XL	4002-0012
2X	4002-0013



STANDARD COVER

- + Protects your ATV from the elements right down to the tires
- + Made of water-resistant, 210 denier urethane coated nylon
- + Will not shrink, stretch, or mildew
- + Regular size fits most ATV's
- + Available in black
- + Standard size - \$44.95
- + XL - \$53.95
- + 2X - \$70.95

STANDARD COVER

DESCRIPTION	PART #
STANDARD	MUDC810
XL	MUDC812
2X	4002-0004



DURA COVER

- + Protects your ATV from the elements right down to the tires
- + Made of water-resistant, 600 denier nylon with PVC backing
- + Will not shrink, stretch, or mildew
- + Regular size fits most ATV's
- + Standard size - \$65.95
- + XL - \$74.95
- + 2X - \$90.95

ATV COVER SIZING CHART:

Standard: Overall Length - 75", Front Width - 52", Center Width - 33", Rear Width - 48", Front Height - 27", Center Height - 40", Rear Height - 34"

XL: Overall Length - 90", Front Width - 52", Center Width - 33", Rear Width - 48", Front Height - 27", Center Height - 40", Rear Height - 34"

2X: Overall Length - 112", Front Width - 52", Center Width - 36", Rear Width - 53", Front Height - 44", Center Height - 52", Rear Height - 52"

DURA COVER

DESCRIPTION	PART #
STANDARD	MUDC806
XL	MUDC808
2X	4002-0003



ATV STAND

- + Arched base offers excellent stability on uneven surfaces
- + Extra thick oil and gas resistant anti-slip rubber platform pad
- + Extra thick aluminum platform with reinforced panels for ultimate durability
- + Available in silver
- + A 10" x 6" cut out in the top of stand for easy access for draining oils
- + Overall height 16"
- + Top of stand measures 16" x 12"
- + \$85.95

ATV STAND	PART#
	4101-0099

- RACEWEAR
- YOUTH
- OUTERWEAR
- SIZING CHART
- BIKER ACCESSORIES
- BIKES & BARS
- CASUALS
- CONTROLS
- GEARING
- DRIVE
- DEFENSE
- ENGINE
- ELECTRICAL
- EXHAUST
- ARMOR
- WHEELS
- TRAIL TOOLS
- RAMPS & STANDS
- CONTAINERS
- BRANDS
- DRIVE
- SUSPENSION
- WEARABLES
- PHONE
- ELECTRICAL
- EXHAUST
- ARMOR
- WHEELS
- RAMPS & COVERS
- TRAIL TOOLS
- PROMO

TRAIL TOOLS

No one wants to be weighted down by a heavy fanny pack full of tools. That's why Moose Racing has creatively engineered several compact, multi-use tools. We can easily cut the number of tools in your pack in half, yet you will still have the same necessary tools for most trail side repairs. So pack smart...pack light.



MULTIMOTO TOOL

- + FINALLY! A multi-tool with metric, motorcycle specific components
- + Stainless steel tool body and locking, folding components
- + Folding tools include: needlenose pliers with sidecutter / wirestripper, file, 6mm socket / bit holder, spring puller, bottle opener, can opener, sewing awl, knife
- + Bit attachments include: #1, 2, 3 phillips and flat screwdriver, 3, 4, 5, 6mm allen wrenches, valve core remover, and 1/4" drive socket attachment
- + Includes tough nylon case with belt loop and rubber attachment holder
- + \$19.95

MULTITOOL	PART#
	3812-0022



T-HANDLE RACE WRENCH

- + Conveniently sized T-handled wrenches for your fanny pack or bike pack
- + Removable socket t-handle features three ends with 1/4" drive for quick socket attachment
- + Available in three styles; removable sockets, non-removable sockets, and non-removable allen heads
- + Made in the USA
- + \$29.95

T-HANDLE WRENCHES		
DESCRIPTION	SIZES	PART #
Removable	8mm, 10mm, 12mm	M02020
Non-removable	8mm, 10mm, 12mm	M7001
Non-removable	8mm, 10mm, 13mm	M7004
Allen Head	4mm, 5mm, 6mm	M7002



PLUG WRENCH

- + Plug wrench for water cooled 2-strokes has a 12 point, broached wrench for tight situations
- + Handle can be custom bent for a better fit on your application
- + Fits standard 13/16" plug size
- + Made in the USA
- + \$5.95 - \$7.95

PLUG WRENCH	PART#
Air Cooled Plug Wrench	M204
Water Cooled Pump Plug Wrench	M205



RIDERS WRENCH BY FREDETTE

- + Combines three wrenches in one: 2-stroke spark plug/front axle/rear axle
- + Available in popular sizes to fit virtually all off-road machines
- + Made in the USA
- + \$19.95 - \$20.95

RIDERS WRENCH BY FREDETTE			MAKE/MODEL/YEAR DESCRIPTION PART #		
GAS GAS			KAWASAKI (CONT.)		
ALL	17 X 27mm	M01030	KDXs 95-07	17 X 27mm	M01030
			KLXs 93-07	17 X 27mm	M01030
HONDA			KTM		
CRs 89-92	17 X 27mm	M01030	ALL 94-07	17 X 27mm	M01030
CRs 93-94	19 X 27mm	M01031	SUZUKI		
CRs 94-99	22 X 27mm	M01034	DRs	17 X 24mm	M01036
CR/CRFs 00-07	22 X 32mm	M01037	DRs	19 X 24mm	M01032
XR	17 X 24mm	M01036	RM125/250 98-07	22 X 24mm	3850-0017
HUSQVARNA			RMX 89-98	19 X 24mm	M01032
ALL	19 X 24mm	M01032	RMZ250/450 04-07	22 X 32mm	M01037
KAWASAKI			YAMAHA		
KXs 86-89	17 X 27mm	M01030	YZs 89-91	17 X 27mm	M01030
KXs 93-02	22 X 27mm	M01034	YZ/ZWR 92-95	19 X 27mm	M01031
KXs 03-07	22 X 32mm	M01037	WR200 91-92	17 X 24mm	M01036
KDXs 86-94	19 X 27mm	M01031	YZ/YZF/WRs 96-07	22 X 27mm	M01034
KX250/450F 04-07	22 X 32mm	M01037			



ENDURO TIRE IRON

- + Fits easily in all Moose Racing fanny packs
- + Hot-Forged chrome vanadium steel withstands the toughest use
- + Vinyl carrying pouch included
- + 8.5" long, weighs only 4.2 oz.
- + \$22.95

ENDURO TIRE IRON	PART#
	M01065



TIRE INFLATOR KIT

- + Don't leave yourself stranded
- + Push valve controlled inflation with the fastest push to inflate technology
- + Inflator connects to tube's valve stem instantly using new threadless design
- + Inflator accepts threaded CO2 cartridges only
- + One CO2 cartridge will inflate one front moto tire to 16 psi or one rear moto tire to 9 psi
- + Replacement 6 pack-16 gram threaded CO2 cartridges available, Part # 0363-0010, \$16.95
- + Designed and made in the USA
- + **KIT CONTAINS:** Premium grade all metal construction tire CO2 inflator Three 16 gram threaded CO2 cartridges Convenient carrying bag
- + \$24.95

CO2 CARTRIDGES CANNOT BE TRANSPORTED ON AN AIRPLANE

TIRE INFLATOR KIT	PART#
	0363-0009



SAFETY WIRE

- + Stainless steel safety wire
- + Spooled on a convenient plastic casing
- + Perfect size for storage compartment or fanny pack
- + Available in two different diameters and lengths
- + \$8.95 - \$9.95

SAFETY WIRE	PART#
.032" X 75'	M112-0032
.028" X 120'	M112-0028



SPRING PULLER

- + A new twist on an old design
- + Strong steel construction and a comfortable new handle
- + Who knew that our logo makes a perfect spring puller handle?
- + Super competitive price
- + \$4.95

SPRING PULLER	PART#
	3850-0056



ULTIMATE TIRE REPAIR KIT

- + All you need to repair and inflate your tire on the road or trail
- + Padded nylon zippered carrying case easily stores inside fanny pack or bike tool compartment
- + One CO2 cartridge will inflate one front moto tire to 16 psi or one rear moto tire to 9 psi
- + Inflator accepts non-threaded and threaded CO2 cartridges
- + Inflator's trigger lock allows you to transport the inflator with a punctured cartridge, leaving the inflator ready to use for the next time you get a flat
- + Replacement CO2 cartridges available
- + **KIT CONTAINS:** High quality inflator Three 16 gram non-threaded CO2 cartridges Tire plugs, patch assortments, glue, scuffer, reamer and plug installation tools Convenient carrying bag
- + \$32.95

CO2 CARTRIDGES CANNOT BE TRANSPORTED ON AN AIRPLANE

ULTIMATE TIRE REPAIR KIT	PART#
	0364-0004



4-IN-1 SCREWDRIVER

- + Fish bowl display contains 20 screwdrivers
- + Each screwdriver contains extension, 2 Phillips bits and 2 flat bits
- + Great fanny pack tool
- + \$2.95 Each

4-IN-1 SCREWDRIVER (Pack of 20)	PART#
	M7003-20



PLUG CARRIER

- + Impact-resistant plastic design fits snug around spare spark plug
- + Perfect for fanny pack or fender bag
- + Keeps plug clean and gapped
- + \$4.95 (Sold in pairs)

PLUG CARRIER	PART#
	M01072

TY-ER IRONS

- + Ergonomic plastic molded handle for increased comfort
- + Spooned end prevents tubes from pinching
- + Zinc coated steel
- + Measures 10 - 1/2" long
- + Sold in pairs
- + Made in the USA
- + \$29.95

TY-ER IRONS	PART#
	M01066



CO2 REPLACEMENT CARTRIDGES

- + 16 gram non-threaded CO2 replacements - 6 pack - \$12.95
- + 16 gram threaded CO2 replacements - 6 pack - \$19.95

CO2 CARTRIDGES CANNOT BE TRANSPORTED ON AN AIRPLANE

CO2 CARTRIDGES	
DESCRIPTION	PART #
Non-threaded	0363-0011
Threaded	0363-0010



TRAIL STRAP

- + Don't go riding without your trail strap
- + Compact 12' long nylon strap
- + Includes convenient carry pouch measuring only 6" L x 2" W x 1" D
- + Carrying pouch includes hook and loop for quick attachment to belt or fanny pack
- + \$12.95

CO2 CARTRIDGES CANNOT BE TRANSPORTED ON AN AIRPLANE

TRAIL STRAP	PART#
	3510-0004

STAINLESS STEEL CABLE TIES

- + Perfect for high temp. applications
- + Ball bearing and barb fastening assembly locks tightly and will not slip
- + Use anywhere a normal cable tie isn't strong enough or can't take the heat
- + Two lengths available, sold in packs of five
- + 8" \$9.95
- + 14" \$11.95

CABLE TIES	PART#
LENGTH	PART#
8"	2120-0144
14"	2120-0145

- FACEWEAR
- YOUTH
- OUTERWEAR
- SIZING CHART
- BIKER ACCESSORIES
- BIKES & RIGGS
- CASUALS
- CONTROLS
- DRIVING
- BEARINGS
- ENGINE
- ELECTRICAL
- EXHAUST
- ARMOR
- WHEELS
- TRAIL PAGES
- RAMPS & STANDS
- CONTACTS
- BEARINGS
- DRIVE
- SUSPENSION
- BEARINGS
- FRONTS
- ELECTRICAL
- EXHAUST
- ARMOR
- WHEELS
- RAMPS & STANDS
- TRAIL TOOLS
- PROMO



TRAIL TOOLS



YZ / WR FORK CAP WRENCH

- + Special wrench needed for fork cap removal on 05 and newer YZ's and WR's (except YZ85)
- + Case hardened, zinc coated steel
- + Made in the USA
- + \$19.95

05-06 YZ/WR FORK CAP WRENCH	PART#
	3805-0023



CAN RACK

- + Keeps cans and oil bottles right where you want them
- + For use in either in a garage or an enclosed trailer
- + \$22.95

CAN RACK	PART#
	M92-21180



SUPER SEAL FILTER OIL

- + Performance tested for maximum air flow and protection
- + High quality, water resistant biodegradable foam filter oil
- + Protects against dirt and the finest dust
- + Stays tacky, will not dry out or drip
- + Contained in a metal can to help keep oil as fresh as possible
- + Will not stain your air filter
- + Available in 1-liter metal cans
- + \$13.95

SUPER SEAL FILTER OIL	PART#
	3610-0007



TRACK BOX REPLACEMENT HARDWARE KITS

- + Two styles of replacement bolt kits specifically for KTM or Japanese dirt bikes
- + KTM hardware is Dacromet plated, 8.8 grade, and has dimpled heads like stock
- + Japanese kit contains nickel-plated bolts selected to replace commonly lost hardware
- + Less expensive than OEM and priceless when you really need it
- + Keep a box in your toolbox, riding pack, or gear bag for those critical moments
- + \$15.95 - \$19.95

TRACK BOX REPLACEMENT HARDWARE KITS	PART#
48pc KTM hardware	2401-0199
54pc Japanese hardware	2401-0200



TIRE PENS

- + Add a custom touch to tires
- + Valve-action wick tip makes application easy
- + Specially formulated ink stays on
- + Available in five colors
- + Sold individually
- + \$12.95

TIRE PENS	PART #
WHITE	F71-1000
YELLOW	F71-1001
RED	F71-1002
ORANGE	F71-1003
SILVER	F71-1004



QUICKSTEEL EPOXY

- + Essential fanny pack item
- + Permanently bonds most surfaces, including steel, aluminum, magnesium and most plastics
- + Neat, easy to use putty cures steel-hard in 15 minutes
- + Withstands high engine temperatures
- + \$4.95

QUICKSTEEL EPOXY	PART#
	M01060



HEAVY-DUTY TIE-DOWNS

- + High quality tie-downs that don't break down after one season
- + Two oversized-high-strength rubber coated hooks
- + 1 inch wide straps are printed with the Moose Racing logo and identification tag
- + Built-in soft tie helps prevent damage to your machine
- + 7 feet long (1 foot longer than industry standard)
- + 1350 lb. break strength
- + 425 lb. working load limit
- + Sold in pairs
- + Made in the USA
- + \$23.95

HEAVY DUTY TIE-DOWNS	PART #
BLACK	3920-0016
BLUE	3920-0017
RED	3920-0018



UTILITY HEAVY-DUTY TIE-DOWNS

- + High-quality tie-downs that last
- + Two oversized, high strength rubber-coated hooks
- + Straps are printed with Moose Utility Division logo
- + Available in standard, ratchet, and quad pack, which includes two of each standard and two ratchet
- + Made in the USA
- + 1" Tie-Downs \$19.95
- + 1" Ratcheting Tie-Downs \$29.95
- + Quad Pack \$47.95

UTILITY HEAVY-DUTY TIE DOWNS	1" TIE-DOWNS	1" RATCHETING TIE-DOWNS	QUAD PACK
BLACK	MD-001	MD-101	MD-201
RED	MD-002	MD-102	MD-202
BLUE	MD-003	MD-103	MD-203



- RACEWEAR
- YOUTH
- OUTERWEAR
- SIZING CHART
- BIKER ACCESSORIES
- PANTS & BAGS
- CASUALS
- CONTROLS
- MARKING
- SPINE
- BEARINGS
- FINISH
- TECHNICAL
- EMERGENCY
- LEADER
- WHEELS
- TRAIL TOOLS
- RAMP & STANDS
- CONTROL
- BIKING
- SPINE
- PROTECTION
- BEARINGS
- SPINE
- TRAIL TOOLS
- EXHAUST
- ARMOR
- WHEELS
- RAMP & COVERS
- TRAIL TOOLS
- BIKING



PROMO



COLLAPSIBLE CANOPY

- + Top quality 10' x 10' shelter great for indoor and outdoor events
- + Durable powder coated steel collapsible frame
- + Canopy top made of heavy-duty pvc coated fabric that is water and uv resistant
- + Quick release folding frame makes it fast and easy to set-up anywhere
- + Hook and loop inner straps ensures a tight canopy fit
- + Nylon composite fittings
- + Includes carrying bag, instructions and stakes
- + Box size is 10"h x 10"w x 62"l and weighs approximately 55 lbs
- + \$249.95

COLLAPSIBLE CANOPY	PART#
	4030-0007



TRACK BANNER

- + Durable plastic material stays in great shape for years, even in bright sunlight
- + Great outdoor visibility
- + Brass grommets for easy attachment to walls, fences, pits or show booths
- + Size 3' W x 7' L
- + \$21.95

TRACK BANNER	PART#
	9904-0265



SHOP BANNER

- + Tough poly banner works great in and outdoors
- + Brass grommets for easy attachment to walls, fences, pits or show booths
- + Size 23" W x 47" L
- + \$9.95

SHOP BANNER	PART#
	9904-0262



COURSE TAPE

- + Bright yellow tape with bold logo design for high visibility
- + 3" x 4 mil
- + 1000' per roll
- + \$20.95

COURSE TAPE	PART#
	MA12

COURSE ARROWS

- + Ink formula resists sun fade and is less than tasty to insects and wildlife
- + Heavy-duty lamination on both sides of arrow
- + Made from heavy-duty card stock
- + Sold in packs of 50
- + \$6.95

COURSE ARROWS	PART#
DANGER/WRONG WAY	9901-0319
BLACK/WHITE	9901-0320
BLACK/ORANGE	9901-0321
RED/WHITE	9901-0322
GREEN/WHITE	9901-0323
BLUE/WHITE	9901-0324



UMBRELLA

- + Large umbrella for staying dry or shading yourself from the sun
- + Made with durable nylon with a carbon shaft and a soft grip
- + 60" open diameter
- + \$19.95

UMBRELLA	PART#
	2950-0001



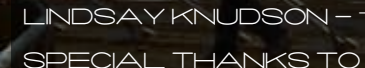
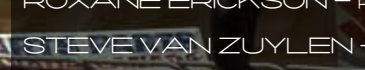
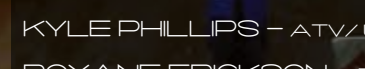
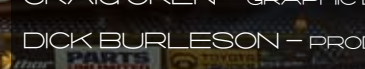
PENNANT FLAGS

- + Excellent outdoor visibility
- + Available in white with black logos
- + One string is 60' long with 36 flags
- + \$27.95

PENNANT FLAGS	PART#
	9904-0386

PROMOTIONAL ITEMS

DESCRIPTION	PART #	PRICE
36" CORPORATE	4320-0497	\$8.95
24" CORPORATE STACKED	4320-0498	\$8.95
6" CORPORATE (10 pack)	4320-0499	\$7.95
6" CORPORATE STACKED (10 pack)	4320-0500	\$7.95
DIE-CUT BULLSEYE, 5 PACK (1 of each color)	4320-0772	\$7.95
WINGS, 6 PACK (1 of each color)	4320-0773	\$7.95
ICON 1, 7 PACK (1 of each color)	4320-0503	\$7.95
SCRIPT, 6 PACK (1 of each color)	4320-0774	\$6.95
ICON 2, 6 PACK (1 of each color)	4320-0775	\$6.95
CREST, 4 PACK (1 of each color)	4320-0776	\$5.95
ARMY BADGE, 4 PACK (1 of each color)	4320-0777	\$5.95
KEYCHAIN (10 pack)	9904-0270	\$1.95 ea.
HAYBALE COVER 75' / ROLL	9904-0255	\$4.95 ea.



ACKNOWLEDGMENTS

- BRAD KRUCKENBERG - GENERAL MANAGER
- ISAAC ACKELS - PRODUCT SPECIALIST/SALES
- KEVIN KELLY - ART DIRECTOR
- DAN HETZER - GRAPHIC DESIGNER
- CRAIG OREN - GRAPHIC DESIGNER
- DICK BURLESON - PRODUCT ENGINEER
- BRANDON MUELLER - PRODUCT DEVELOPMENT
- BRANDEN LOVELAND - PRODUCT DEVELOPMENT
- KYLE PHILLIPS - ATV/UTV PRODUCT DEVELOPMENT
- ROXANE ERICKSON - RIDER SUPPORT MANAGER/PROMO
- STEVE VAN ZUYLEN - PRO RIDER SUPPORT
- LINDSAY KNUDSON - TRAFFICING/GENERAL SUPPORT

SPECIAL THANKS TO THE PARTS UNLIMITED SALES STAFF, ALONG WITH OUR SPONSORED RIDERS AND TEAMS, FOR PUTTING US ON THE PODIUM EVERY DAY

- RACEWEAR
- YOUTH
- OUTWEAR
- SIZING CHART
- RIVER ACCESSORIES
- RACE & RACE
- CAROLS
- CONTROLS
- BRACING
- RAVE
- BEARINGS
- ENGINE
- ELECTRICAL
- EXHAUST
- EXHAUST
- TRAIL PARTS
- RAMP & STANDS
- CONTROLS
- BRACING
- RAVE
- SUSPENSION
- BEARINGS
- ENGINE
- EXHAUST
- EXHAUST
- TRAIL PARTS
- TRAIL PARTS
- TRAIL TOOLS
- PROMO

WWW.MOOSERACING.COM

COPYRIGHT 2007. LeMans Corporation. All rights reserved. These materials may not be copied or reproduced in any manner without the written permission of LeMans Corporation.



9901-0581

Moose Racing Products are only available through
your local authorized Parts Unlimited dealer.

PARTS
UNLIMITED