

SITE

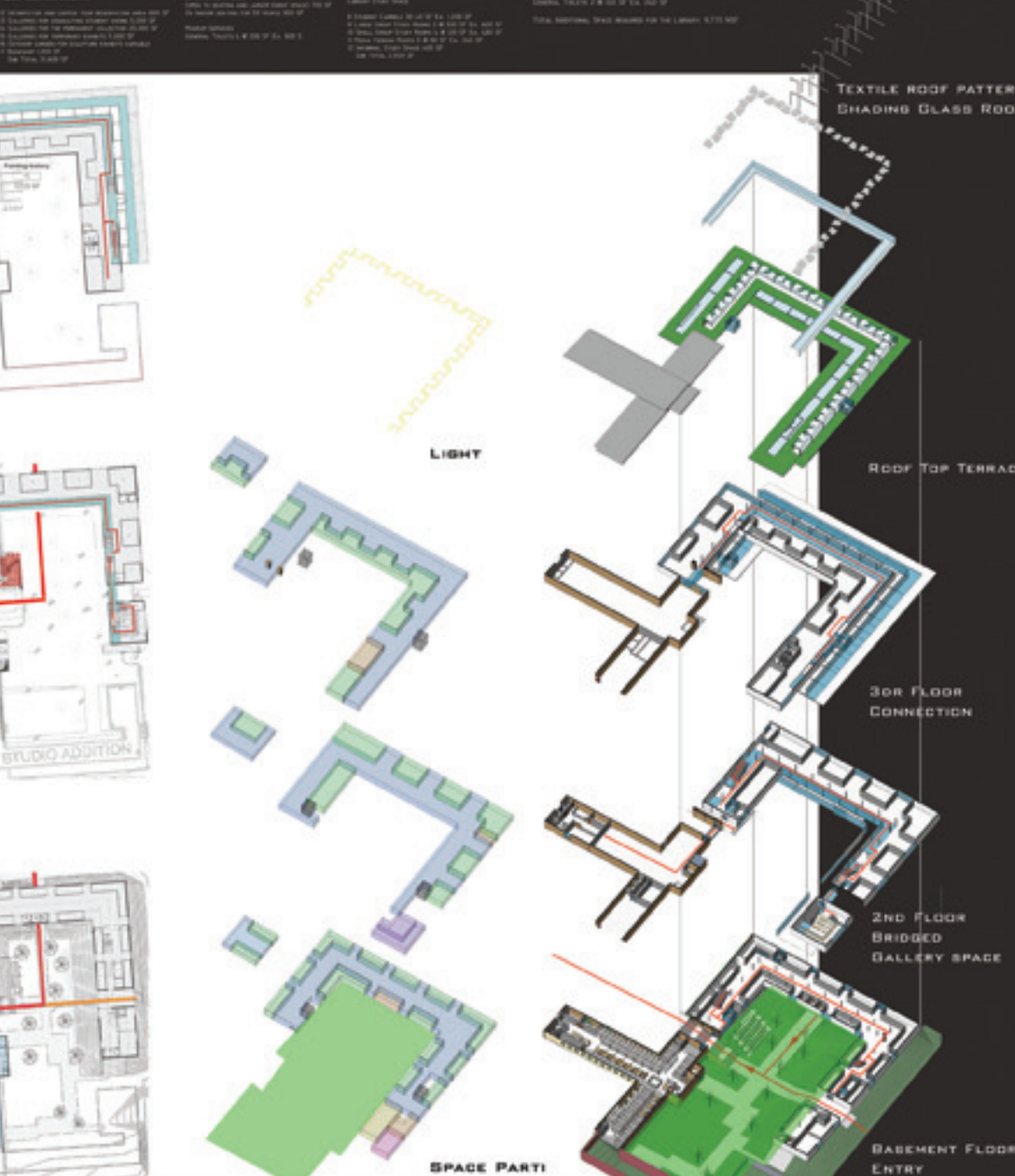
"A CONTINUOUS FABRIC, A CLOSELY WOVEN, CIVIC STRUCTURE THAT WOULD ALSO HAVE BEEN PERMEATED BY RESPLENDANT NATURE"



BUILDING



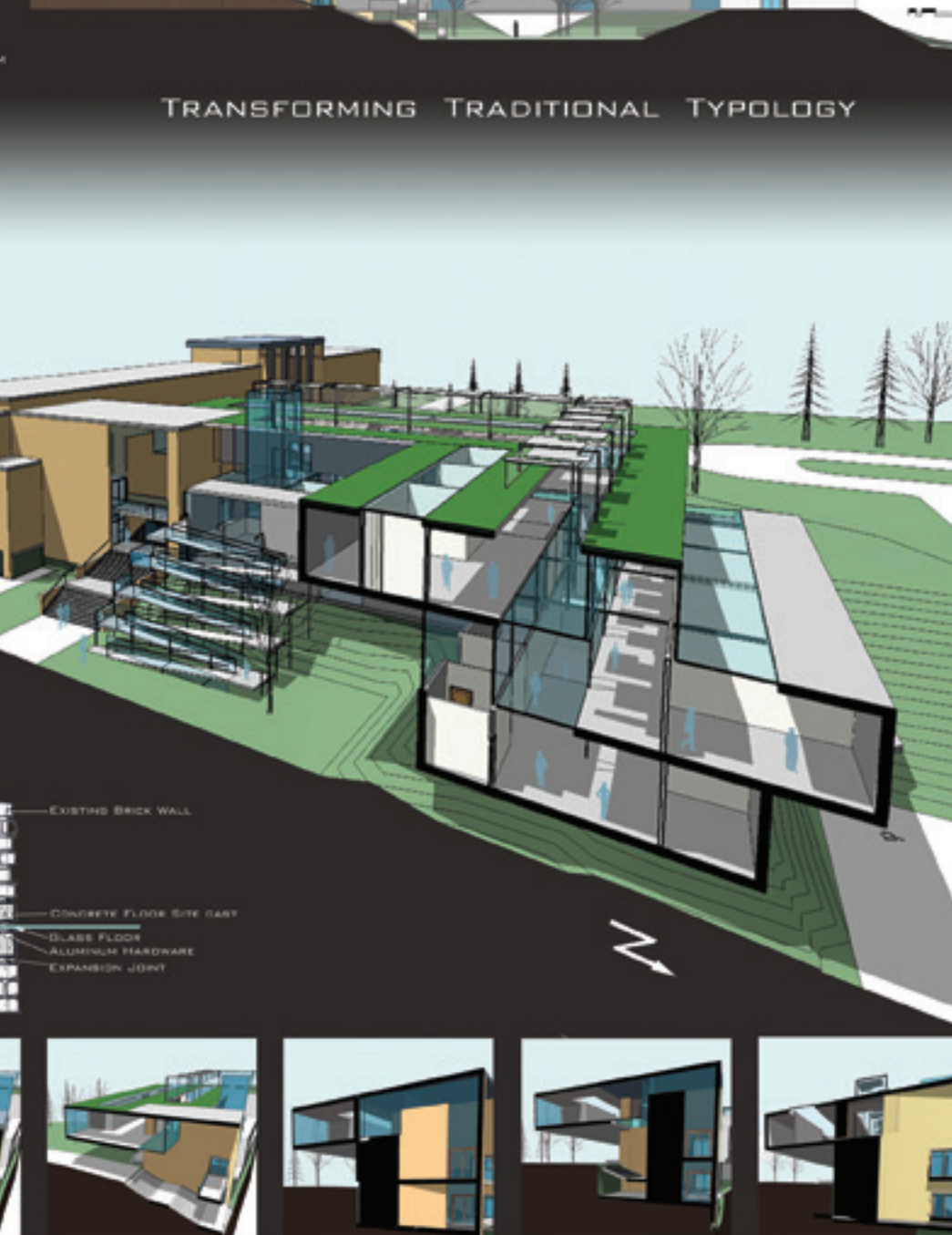
META-FORMS



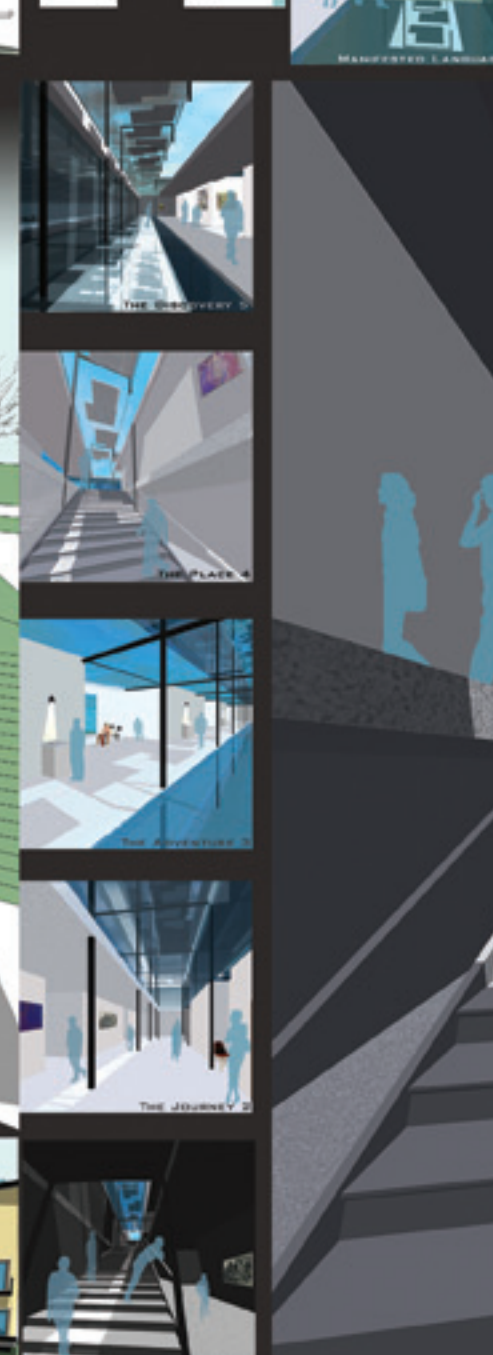
LIGHT



TRANSFORMING TRADITIONAL TYPOLOGY



INTERIOR



EXTERIOR

