

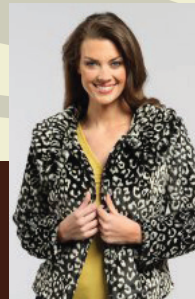
WHERE FASHION-CONSCIOUS WOMEN RELY ON FINDING
THEIR FAVORITE BRANDS OF CLOTHING AND ACCESSORIES.

sensibly
chic

AT REGENCY CENTRE *(Formerly Apparel Outlet)*

*Animal Prints
Gone Wild.*
This season's
must-have!

Give with confidence this holiday with Sensibly Chic's
New "No-Hassle" Return Policy for Refund or Exchange!



ANNE KLEIN | ANTHROPOLOGIE | DKNY | LILLY PULITZER | MUDPIE | NOT YOUR DAUGHTER'S JEANS | RALPH LAUREN | AND MORE

171 W. Lowry Lane | Lexington, KY 40503 | 859.276.6144 | Open Mon.-Sat. 10 a.m.-7 p.m.; Sun. 1-5 p.m. | www.sensiblychicstyle.com