

2007 BRIDAL COLLECTION

SAY FOREVER.



A.

B.

C.

AMIDON





A.



B.



C.

The Legacy Collection

BY LUXURY

EACH RING IS A LIMITED EDITION WORK OF ART
AS UNIQUE AS THE LOVE IT SYMBOLIZES.



D.



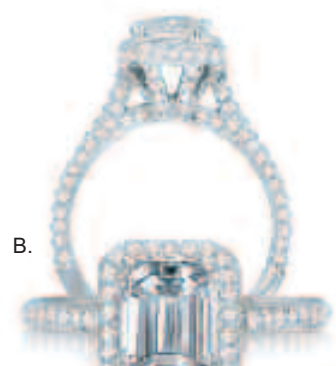
E.



F.



A.



B.



C.

The Legacy Collection

BY LUXURY



D.

2A. 1 1/2 ctw \$3599
2B. 1 ctw \$2995
2C. 3/4 ctw \$2399
2D. 1 1/10 ctw \$3399
2E. 3/4 ctw \$2499
2F. 5/8 ctw \$2399
Centers Sold Separately

3A. 1/5 ctw \$1195
3B. 1 ctw \$2899
3C. 1 ctw \$2945
3D. 3/4 ctw \$2799
3E. 1 1/2 ctw \$3945
3F. 1 1/3 ctw \$4995
3G. 1 1/4 ctw \$3595
Centers Sold Separately

On The Cover
1A. 1 1/2 ctw \$3895
2 ctw \$5695 , 3 ctw \$10995
1B. 2 1/2 ctw \$9195
1C. 1 1/2 ctw \$4595



E.



F.



G.

SAY SHE'S THE MOON AND THE STARS.



- 4A. 1 ctw (3/8 ctr.) \$2195
- 4B. 1 1/4 ctw (5/8 ctr.) \$3995
- 4C. 1 1/2 ctw (5/8 ctr.) \$4395
1 ctw \$1895
- 4D. 2 ctw (3/4 ctr.) \$6095
1 ctw \$1995, 1 1/2 ctw \$4395
- 4E. 1 1/5 ctw (5/8 ctr.) \$4195
- 4F. 1/2 ctw (1/4 ctr.) \$1195

- 5A. 1 3/4 ctw (3/4 ctr.) \$4995
- 5B. 1 ctw (3/4 ctr.) \$4395
- 5C. 2 ctw (1 ctr.) \$9995
- 5D. 1ctw (3/4 ctr.) \$4995
- 5E. 2 ctw (1/2 ctr.) \$4495
- 5F. 2 1/4 ctw (3/4 ctr.) \$6995





A.



B.

SAY YOU CAN'T LIVE



C.



D.



E.



F.



G.



C.

D.

E.



A.

B.



F.

G.

WITHOUT HER.

- 6A. 1 1/4 ctw (1/2 ctr.) \$3395
- 6B. 1 1/4 ctw (5/8 ctr.) \$3795
- 6C. 1 1/2 ctw (3/8 ctr.) \$2795
- 6D. 1 1/2 ctw (3/8 ctr.) \$2795
- 6E. 1 1/2 ctw (3/8 ctr.) \$2795
- 6F. 1 ctw (1/2 ctr.) \$2795
- 6G. 1ctw (1/2ctr.) \$3095

- 7A. 1 ctw (3/8 ctr.) \$2195
- 7B. 1 ctw (3/8 ctr.) \$2195
- 7C. 1/2 ctw (1/4 ctr.) \$1095
- 7D. 1/2 ctw (1/4 ctr.) \$1095
- 7E. 1/2 ctw (1/4 ctr.) \$1095
- 7F. 1/2 ctw (1/3 ctr.) \$1095
- 7G. 1/2 ctw (1/3 ctr.) \$1095
- 7H. 1ctw \$1995, 2 ctw \$4495



H.



A.

B.



C.



D.

E.

F.

- 8A. 1 1/2 ctw \$3395
- 8B. 1 1/2 ctw \$3895, 2ctw \$5695
3 ctw \$10995
- 8C. 2 1/2 ctw \$9195
- 8D. 1/2 ctw \$895, 1 ctw \$1695
- 8E. 1/2 ctw \$1095, 1 ctw \$1995
- 8F. 1/4 ctw \$445, 1/2 ctw \$795

- 9A. 1 ctw \$ 2195, 1 1/2 ctw \$3295,
2 ctw \$6595, 3 ctw \$14995
- 9B. 1 ctw \$2195, 1 1/2 ctw \$4495,
2 ctw \$7495
- 9C. 1 ctw \$2195, 1 1/2 ctw \$4495,
2 ctw \$7495
- 9D. 1 ctw \$2195, 1 1/2 ctw \$3795,
2 ctw \$6995

SAY IT LOUD & CLEAR.



A.



B.

C.

D.





A.

B.

CERTIFIED COLORLESS

THE ULTIMATE...CERTIFIED COLORLES DIAMONDS
SET IN 18KT GOLD



A.

B.



C.



D.



E.



F.

10A. 1 ctw \$3195, 1 1/2 ctw \$4095, 2 ctw \$6595
10B. 1 ctw \$2195, 1 1/2 ctw \$4095, 2 ctw \$5495

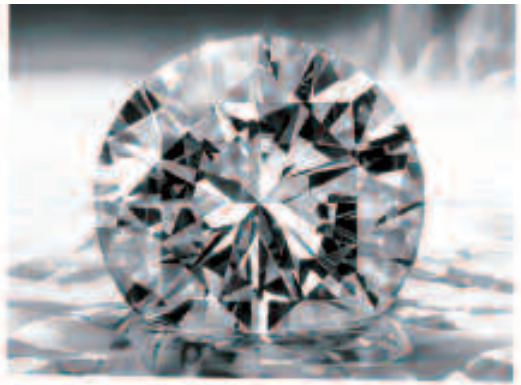
11A. 1/2 ctw \$795
11B. 1 ctw \$1595
11C. 1/2 ctw \$695, 1ctw \$1295
11D. 1/7 ctw \$345, 1/4 ctw\$445, 1/2 ctw \$695
11E. 1/2 ctw \$695, 1 ctw \$1445
11F. 1/2 ctw \$695, 1ctw \$1095
11G. 1/4 ctw \$545
11H. 1/2 ctw \$1095



G.



H.



When it comes to determining a diamond's quality and value, there is a universally accepted standard known as the four C's:

CUT COLOR CLARITY CARAT WEIGHT

FIFTH C
Our Commitment To You

Of all the purchases you will make during your lifetime, the selection of a Diamond Engagement ring that symbolizes your love is surely one of the most important. As you consider the accompanying chart explaining the 4 C's in selecting your diamond, we hope you will also consider the Fifth C—our Commitment to you—in selecting your Jeweler.

Our Commitment to you begins even before you enter our store. From fashion-forward designs to contemporary classics, we stock an extraordinary array of today's best styles to give you the widest possible selection from which to choose.

Our diamonds are individually hand-selected by expert gemologists, to guarantee supreme radiance, fire, and brilliance. We carefully evaluate each style for the beauty of its design and to ensure it meets our exacting standards of craftsmanship. Our goal is to provide you a lifetime of satisfaction and enjoyment.

As your Jeweler, we will always do our best to provide you with exceptional selection, quality, service and value. This is our Commitment to you—now, and for as long as you wear your ring.



SHALLOW CUT
Light "leaks" through the bottom. Diamond may have dull reflection.



IDEAL CUT
As light is reflected from all sides, it comes back through the top sparkling.



DEEP CUT
Light is lost through the sides. Diamond may appear dark in the center.

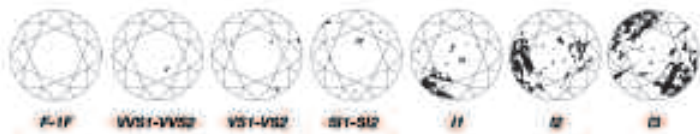
CUT

The cut of a diamond determines its ultimate beauty. A diamond cut to correct proportions will give off an unrivaled radiance. Cut a diamond too shallow or too deep, and light will escape through the bottom or sides.



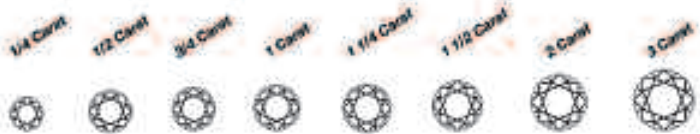
COLOR

Diamonds occur in every color of the spectrum. As a general rule, the less color a diamond has, the brighter its appearance. Truly colorless gems are extremely rare.



CLARITY

Clarity refers to the number of imperfections in the diamond, known as inclusions. All diamonds possess inclusions; the fewer the inclusions the more rare and valuable the stone.



CARAT WEIGHT

Diamonds are sold by weight in carats. Each carat is 1/5 of a gram. The heavier the diamond, the more valuable it is, but bigger doesn't necessarily mean better. Quality is found in diamonds of all sizes.

JOURNEY
DIAMOND JEWELRY
WITH EVERY STEP,
LOVE GROWS.

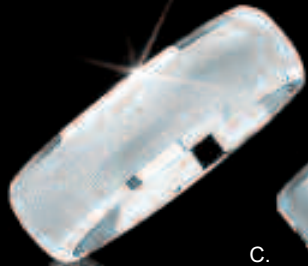
13A. 1/4 ctw \$325, 1/2 ctw \$895, 3/4 ctw \$1095, 1 ctw \$1395, 1 1/2 ctw \$2795
13B. 1/4 ctw \$325, 1/2 ctw \$545, 1 ctw \$1395
13C. 1/2 ctw \$545
13D. 1/2 ctw \$895
13E. 1/2 ctw \$545
13F. 1/2 ctw \$545



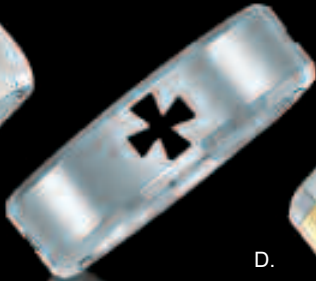
A.



SAY HE'S THE ONE



B.



C.



D.



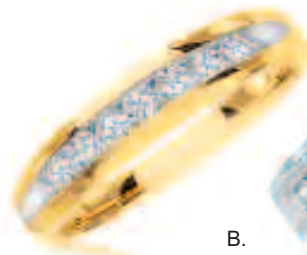
E.



F.



G.



A.



B.

FOR YOU.



C.



D.

- 14A. \$150
- 14B. \$100
- 14C. \$100
- 14D. 1/4 ctw \$495, 1/2 ctw \$895
- 14E. \$195
- 14F. \$195
- 14G. \$195

- 15A. 1/2 ctw \$895, 1 ctw \$1995
- 15B. 1/7 ctw \$215, 1/4 ctw \$445
1/2 ctw \$545
- 15C. 1/2 ctw \$1395, 1 ctw \$2795
- 15D. 1/2 ctw \$1095, 1 ctw \$2195
- 15E. \$195
- 15F. \$195
- 15G. \$495
- 15H. \$295



E.



F.



G.



H.



SOULMATE[®] Become one. Again.

SoulMate[®] Wedding Rings are set with a pair of diamonds that have been cut from one original rough diamond. These diamonds with their unbreakable connection are the perfect symbol of enduring love. Celebrate your lives coming together with a pair of SoulMate[®] Wedding Rings!



SoulMate[®] Diamond Jewelry.



Celebrating life's special connections.

AMIDON



53 South Main Street, Hanover, NH. 03755 603-643-3615
Powerhouse, 8 Glen Road # 18 West Lebanon, NH 03784 603-298-7600

Sale prices are off the regular ticketed price of selected items. Intermediate markdowns may have been taken. Every effort has been made to produce this catalog without error. Should any error occur, we reserve the right to correct it by displaying corrections at all store locations. All items are subject to availability. Many items are shown larger than actual size to show detail. All Diamond Weights featured in our catalog are approximate. Fractional weights correspond to actual weights as follows: 1/10: .09 to .11, 1/8: .12 to .13, 1/7: .14 to .17, 1/5: .18 to .22, 1/4: .23 to .28, 1/3: .29 to .36, 3/8: .37 to .44, 1/2: .45 to .56, 5/8: .57 to .69, 3/4: .70 to .79, 1: .95 to 1.10, 1 1/4: 1.20 to 1.39, 1 1/2: 1.45 to 1.59, 1 3/4: 1.70 to 1.79, 2: 1.95 to 2.10. Catalog #704.