

The LifeSpan Infant Sink

Don Pancoe
Alessio Giubba
& Tod Corlett



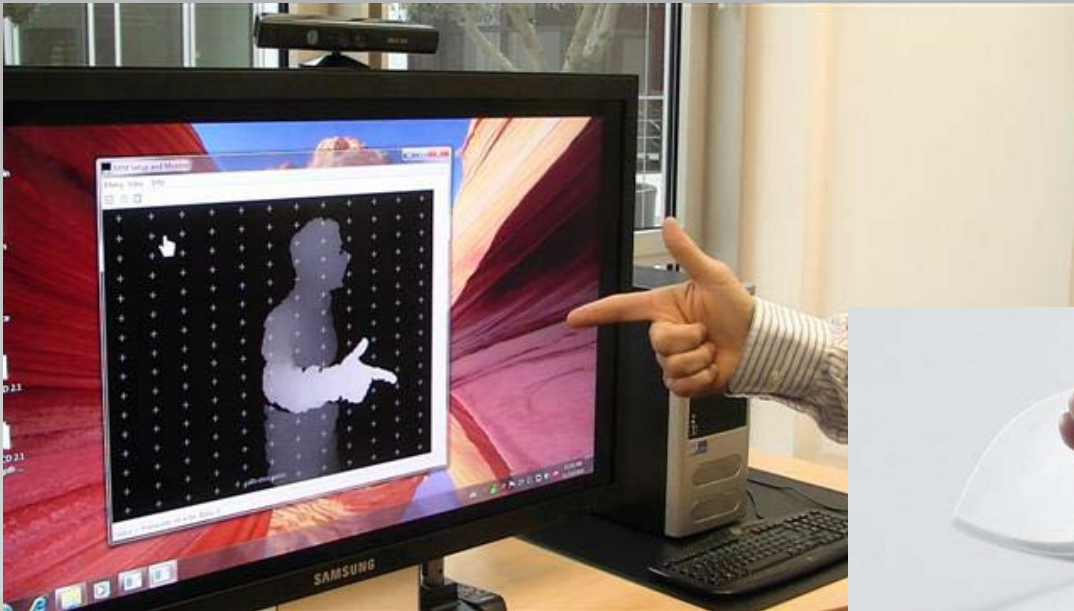
Bathing Children with LifeSpan

- Stages of child bathing ability:
 - Infant: entirely a parent activity
 - Toddler: primarily a parent activity, but child can participate or resist; fun is important
 - Elementary: primarily a child activity, but with parent assistance on key tasks (rinsing hair)
 - Small Adult: completely autonomous (other than parent verification)

Special Provisions per Stage

- Infant: complete support of child, optimal work position for parent – *pursued sink design*
- Toddler: raising of child to parent height within shower – *duplicated effort w/ other teams*
- Elementary: parent control over direction of shower spray – *gestural control, future design concept*
- Small Adult: no special provision necessary beyond ergonomic placement – *already considered*

Gestural Shower Control



Wolfgang Herfurtnner

Jasper Dekker



Initial Concept – Sink Insert

- Would fit into/on top of standard sink basin
- Would require storage and additional cleaning
- LifeSpan team recommended replacement of sink basin during “Infant” stage, in keeping with overall LifeSpan service concept
- Decision to take Infant Sink to next stage

Initial Research – Current Products



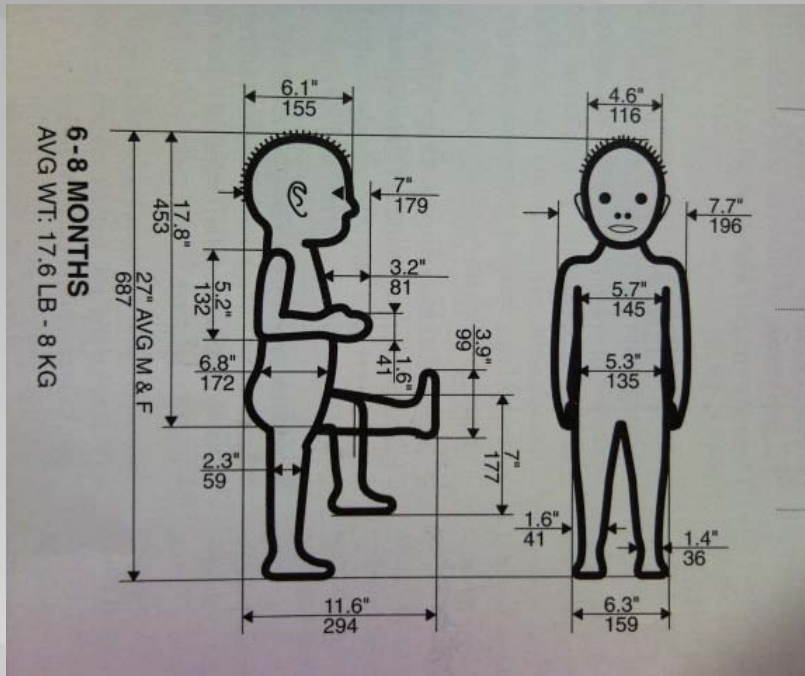
The First Years



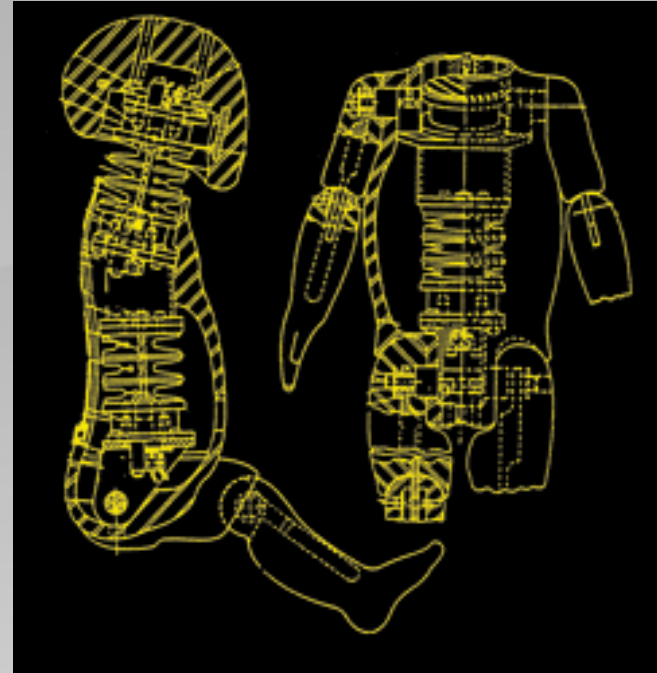
Primo Baby

- With or without integrated basin
- Similar designs: extensive support and contact
- Consult with pediatric orthopedist

Initial Research – Infant Dimensions



Henry Dreyfuss Assoc.



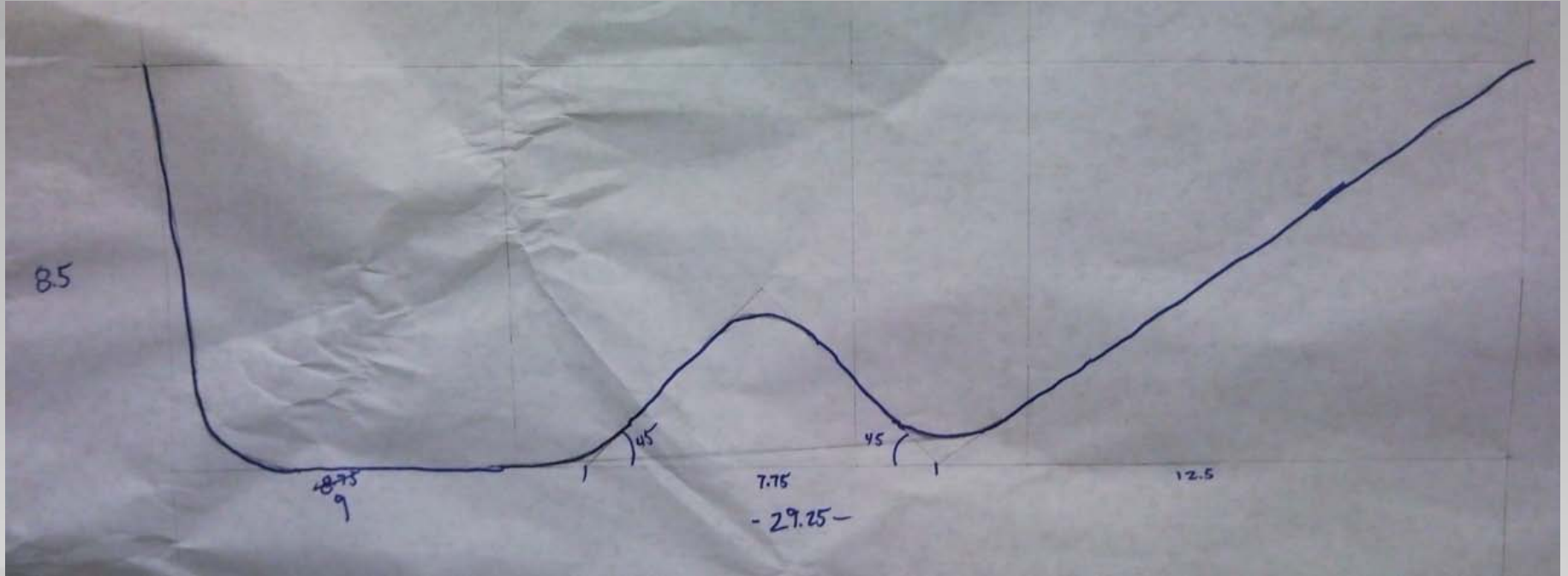
Humanetics

- Henry Dreyfuss Associates text
- 6-month infant crash test dummy (online)

Research Model - Goals

- Size: is this thing just too big?
- Optimum orientation: baby left-to-right, right-to-left, facing parent or facing rear display
- Baby surface contact: support and safety balanced against comfort and ease-of-use
- Adult surface contact: initial research, continue with later generation model
- Measure of sink intrusiveness to adult users

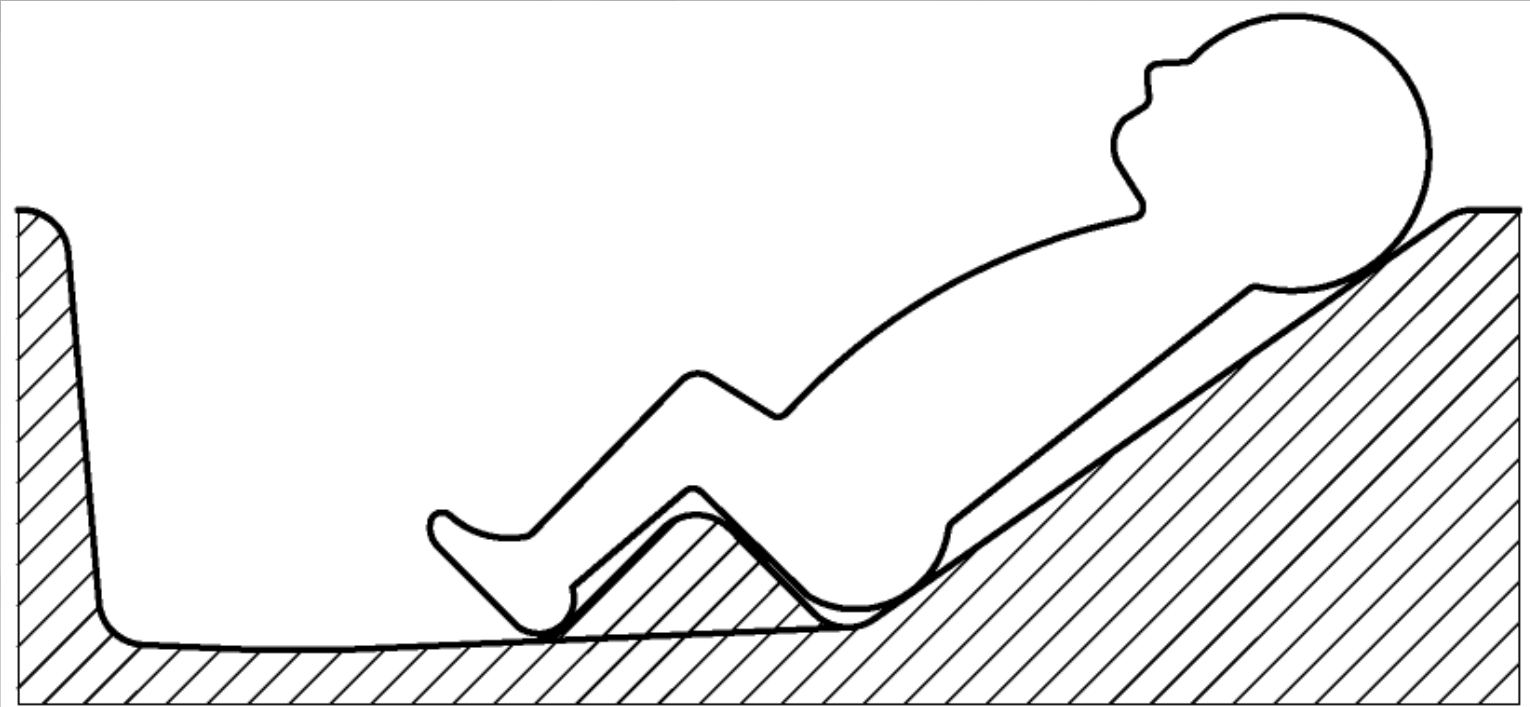
Initial Sketch & Dimensions



Don Pancoe

- Orthographic view, focused on profile of infant seat / sink basin

Initial 2D CAD



Don Pancoe

- Similar orthographic view with infant added for size reference

1:1 Research Model – Early Stage



Don Pancoe & Alessio Giubba

Clay Model



Alessio Giubba

- Developing shape of entire sink basin, including infant seat

1:1 Research Model – Final Stage



Don Pancoe & Alessio Giubba



Don Pancoe & Alessio Giubba

Revisit Goals

- Size: is this thing just too big?
- Optimum orientation: baby left-to-right, right-to-left, facing parent or facing rear display
- Baby surface contact: support and safety balanced against comfort and ease-of-use
- Adult surface contact: initial research, continue with later generation model
- Measure of sink intrusiveness to adult users