



IMMEDIATE OCCUPANCY!

Unit PH 1103, — \$627,400 Condo Maintenance Fees: \$488.29/month

1261 sq. ft. Terrace 380 sq. ft. _____ (parking and locker included)

hōm is right in the heart of urban living and postcard-perfect green spaces. Set beside Little Italy and steps from the green spaces of Dow's Lake, it's a place that's as welcoming as the neighbourhood and just a short walk to every convenience.

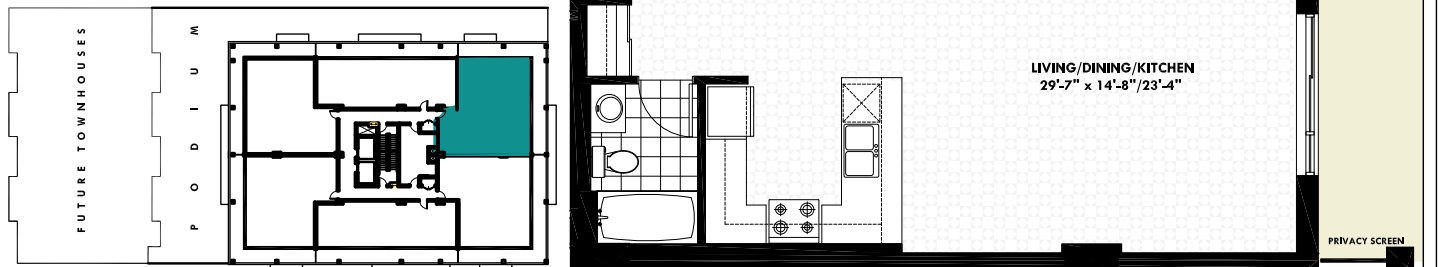
For more information contact Shannon Craig
613-728-7873 | shannon@domicile.ca
Sales Centre—100 Champagne Ave. South

domicile



Beautiful two-bedroom plus den,

two bath luxury condo with many amenities and upgrades including a vanity combination cabinet in the ensuite bathroom complete with three drawers and double cabinet doors, upgraded wall tiles and “river white” granite in kitchen and bathrooms.



Building Amenities

- Main lobby with furnished reception area, multipurpose common lounge and meeting room and kitchenette
- Outdoor terrace retreat featuring an outdoor lounge, BBQ station, gardens, terrace walk and private park benches
- Fitness room
- Pet wash station
- Indoor bicycle storage
- Locker room
- Visitor parking
- Non-smoking building
- LEED certified building

Suite Features

- Large private terraces
- Granite countertops in kitchen & bath
- Engineered hardwood flooring
- Sleek, modern finishes throughout
- 10' high ceilings
- Gas line to balcony
- Capped ceiling outlet in the bedrooms

For more information contact Shannon Craig
613-728-7873 | shannon@domicile.ca
Sales Centre—100 Champagne Ave. South

domicile



IMMEDIATE OCCUPANCY!

Unit PH 1203,—\$641,500 Condo Maintenance Fees: \$488.29/month

1261 sq. ft. Terrace 380 sq. ft. _____ (parking and locker included)

hōm is right in the heart of urban living and postcard-perfect green spaces. Set beside Little Italy and steps from the green spaces of Dow's Lake, it's a place that's as welcoming as the neighbourhood and just a short walk to every convenience.

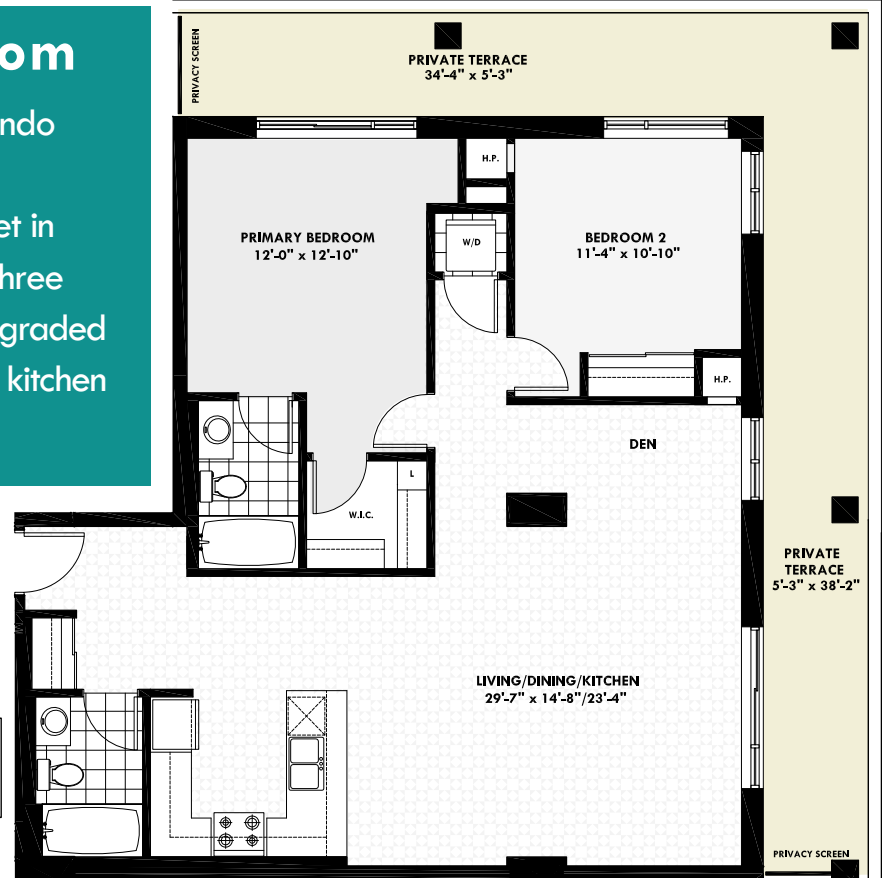
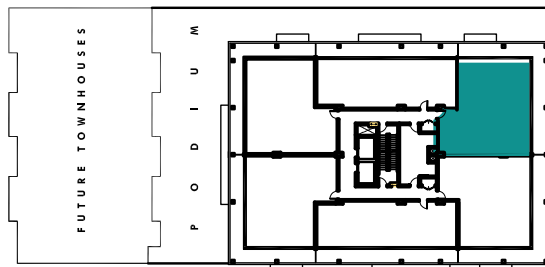
For more information contact Shannon Craig
613-728-7873 | shannon@domicile.ca
Sales Centre—100 Champagne Ave. South

domicile



Beautiful two-bedroom plus den,

two bath luxury condo with many amenities and upgrades including a vanity combination cabinet in the ensuite bathroom complete with three drawers and double cabinet doors, upgraded main and ensuite bathroom wall and kitchen backsplash tiles.



Building Amenities

- Main lobby with furnished reception area, multipurpose common lounge and meeting room and kitchenette
- Outdoor terrace retreat featuring an outdoor lounge, BBQ station, gardens, terrace walk and private park benches
- Fitness room
- Pet wash station
- Indoor bicycle storage
- Locker room
- Visitor parking
- Non-smoking building
- LEED certified building

Suite Features

- Large private terraces
- Granite countertops in kitchen & bath
- Engineered hardwood flooring
- Sleek, modern finishes throughout
- 10' high ceilings
- Gas line to balcony
- Capped ceiling outlet in the bedrooms

For more information contact Shannon Craig
613-728-7873 | shannon@domicile.ca
Sales Centre—100 Champagne Ave. South

domicile