

THE BLUE CRAB
123 RIVER ROAD
ANNAPOLIS, MARYLAND 21401

PROJECT NUMBER: 10-04-F2453

DRAWING DATE: 12/14/10

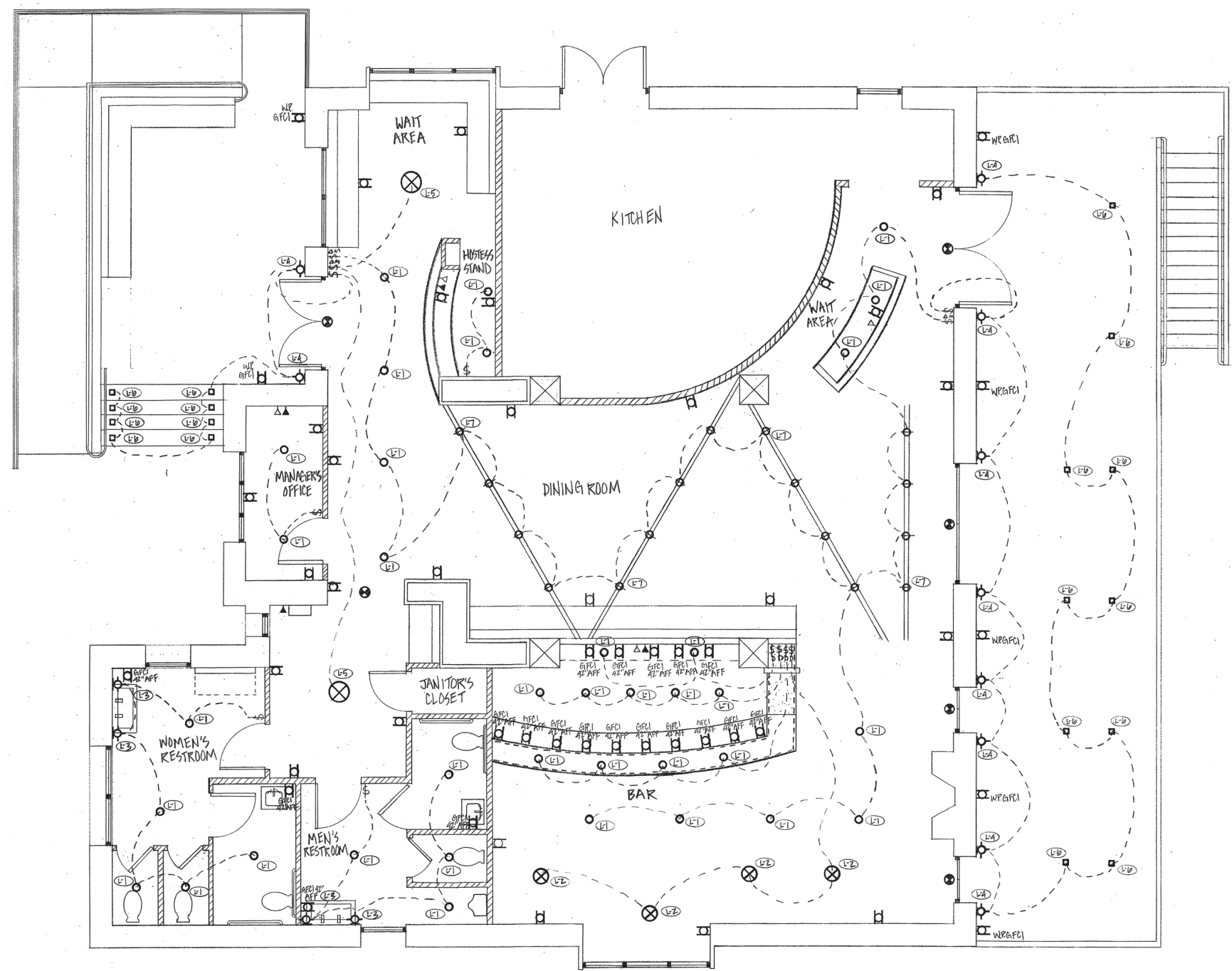
REVISIONS: _____

THESE DESIGNS AND DRAWINGS ARE THE COPYRIGHTED PROPERTY OF NATALIE MATT AND MAY NOT BE REPRODUCED WITHOUT THE WRITTEN CONSENT OF THE INTERIOR DESIGNER.

THE CONTRACTORS SHALL CHECK AND VERIFY ALL DIMENSIONS OF THE JOBS AND BE RESPONSIBLE FOR THE SAME, REPORTING ANY DISCREPANCIES TO THE INTERIOR DESIGNER BEFORE COMMENCING WORK.

DRAWINGS NOT TO BE SCALED.

ID-4



LIGHTING		ELECTRICAL	
SYMBOL	DESCRIPTION	SYMBOL	DESCRIPTION
⊙	CEILING MOUNTED EMERGENCY EXIT LIGHT	□	DUPLEX OUTLET @ 1'8" R.F.F.
○	RECESSED LIGHT FIXTURE	□	DUPLEX OUTLET W/ GROUND FAULT CIRCUIT INTERRUPTER
□	EXTERIOR RECESSED FLOOR LIGHT	□	DUPLEX OUTLET @ NOTED HEIGHT
⊙	CEILING MOUNTED LIGHT FIXTURE	□	WATERPROOF DUPLEX OUTLET
—	CABLE LIGHTING	⊙	DATA OUTLET
⊙	WALL MOUNTED LIGHT FIXTURE	⊙	TELEPHONE OUTLET
---	WIRING		
⊙	LIGHTING TRIG		
⊙	SWITCH		
⊙	3-WAY SWITCH		
⊙	DIMMER SWITCH		

LIGHTING SCHEDULE							
MARK	DESCRIPTION	SIZE (LxWxH)	MANUFACTURER	MODEL #	FINISH	REMARKS	QTY
C10	INCANDESCENT RECESSED LIGHT	4 7/8" x 7 1/2" x 5 1/2"	TRAC LIGHTING	TRV7-23	ALUMINUM	OPEN REFLECTION, 3/2" WHITE TRIM	36
C11	EAST PAK PENDANT	12" DIA. x 1 1/2"	EST. PAK, INC.	11-4378	CAST BRON, METAL, GLASS		4
C12	WALL MOUNTED SCENE	8 1/4" x 7 1/2" x 5 1/2"	WATERWORKS	287963	NICKEL, OPAL GLASS		4
C13	EXTERIOR WALL MOUNTED SCENE	12" DIA. x 1 1/2" x 5 1/2"	TRAC LIGHTING	TR10003	CHROME, CLEAR GLASS		36
C14	LARGE PENDANT LIGHT	36" DIA. x 18"	TRAYSON LIGHTING	HU00035	CHROME, WHITE	ADJUSTABLE HEIGHT	2
C15	EXTERIOR RECESSED FLOOR LIGHT	4 1/2" x 4"	TRAC	TR10003	CHROME, CLEAR GLASS	EXTERIOR LUMINAIRE W/ WARMY GLASS	36
C16	CABLE LIGHTING	24" x 1"	TRAC LIGHTING	TR10003P	CHROME	4 TRACKS, 16 LUMINAIRE	4



LIGHTING/POWER & COMMUNICATION PLAN
NTS.