



BLI LEVEL 4 RENOVATION

CONSTRUCTION DOCUMENT

Owner Brigham and Women's Hospital
75 Francis Street
Boston, MA 02115
Tel. 617.732.6000

Partners Real Estate & Facilities
20 Kent Street
Brookline, MA 02445

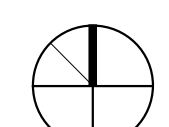
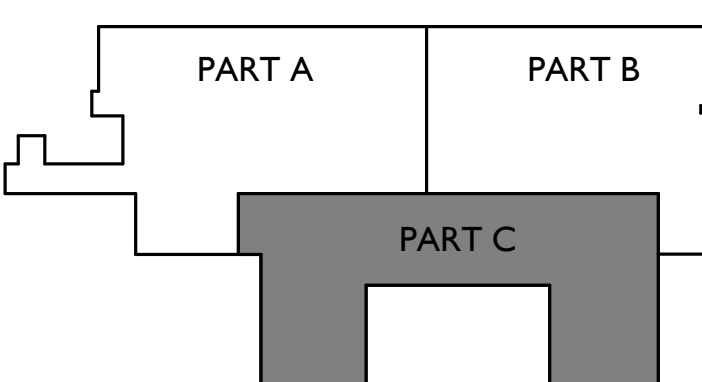
M/E/P/FP Bard, Rao + Athanas
Consulting Engineers, LLC
10 Guest St., 4th Floor
Boston, MA, 02135
Tel. 617.254.0016

Stamp

Revisions

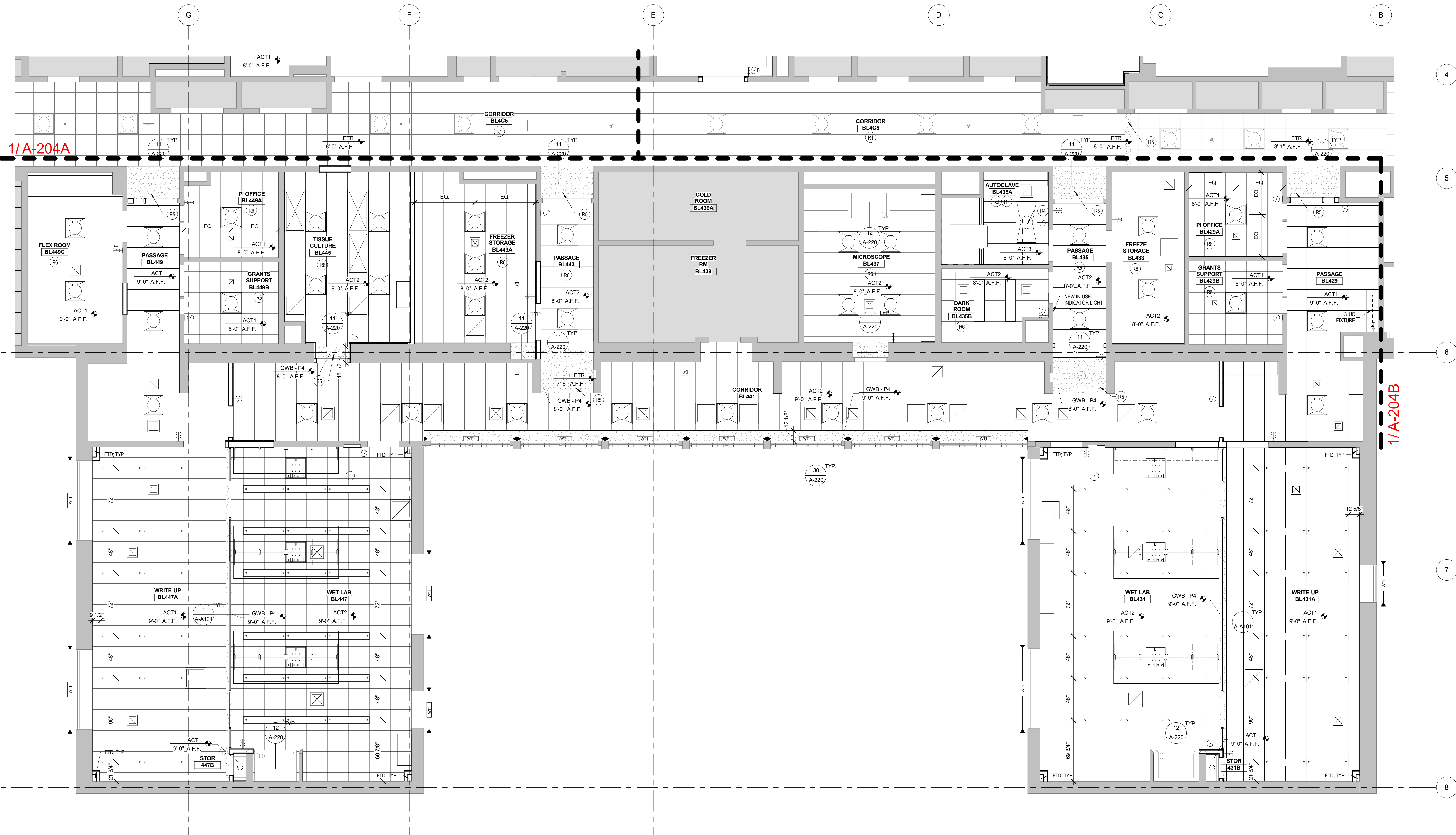
No.	Description	Date

KEY PLAN



Drawing Title
**BLI LEVEL 4 ENLARGED RCP
PART C**

Job Number 35017-00 Drawing No.
Drawn by NM
Checked JM
Date 02/10/17
Scale As indicated



1 BLI LEVEL 4 RCP - PART C
1/4" = 1'-0"

PLAN LEGEND

[Symbol]	NEW PARTITION
[Symbol]	NEW ITEM
[Symbol]	EXISTING PARTITION
[Symbol]	EXISTING ITEM
[Symbol]	FURNITURE, NIC SEE FURNITURE PLAN
[Symbol]	EQUIPMENT, NIC
[Symbol]	NOT IN SCOPE

RCP WORK NOTES

R#	DESCRIPTION
R1	ALTERNATE 1 - CORRIDOR BL4C5 & BL4C8 CEILING REPLACED (ETR HEIGHT), EXISTING LIGHTING TO BE RE-INSTALLED W/ NEW MEP DEVICE COVER REPLACEMENT TO BE INCLUDED IN SCOPE
R2	REPLACE CEILING TILES FROM SELECTION OF DEMO OVERSTOCK AS REQUIRED
R3	EXISTING WINDOW TREATMENTS TO REMAIN. DEEP CLEAN AND REPAIR AS REQUIRED
R4	FIXTURE TO BE SEALED FOR WET CONDITIONS
R5	PATCH ETR SOFFIT WHERE DISRUPTION FROM DEMO HAS OCCURED
R6	HEIGHT OF CEILING TO MATCH PRIOR EXISTING CEILING IF DIFFERENT FROM INDICATED
R6	HEIGHT TO MATCH PRIOR EXISTING CEILING IF DIFFERENT FROM INDICATED
R7	NEW CANOPY HOOD TO BE INSTALLED FOR AUTOCLAVE. REFER TO MEP PLANS FOR LOCATION TO COORDINATE WITH NEW AUTOCLAVE.

REFLECTED CEILING PLAN LEGEND

[Symbol]	EXIT SIGN	[Symbol]	FIXTURE: WALL WASH
[Symbol]	SMOKE DETECTOR	[Symbol]	FIXTURE: LINEAR PENDANT
[Symbol]	SPRINKLER	[Symbol]	FIXTURE: 2'x2'
[Symbol]	DIFFUSER - RETURN	[Symbol]	FIXTURE: 2'x4'
[Symbol]	DIFFUSER - SUPPLY	[Symbol]	FIXTURE: PENDANT
[Symbol]	DIFFUSER - EXHAUST	[Symbol]	WINDOW TREATMENT
[Symbol]	LAB SERVICE ACCESS PANEL	[Symbol]	FIXTURE: UNDER CABINET
[Symbol]	LINEAR DIFFUSER	[Symbol]	ACCESSORY TAG - REFER TO A-600
[Symbol]	FIXTURE: LINEAR BOX		
[Symbol]	FIXTURE: DOWN LIGHT		
[Symbol]	DUPLEX: CEILING POWER		

RCP GENERAL NOTES:

- GWB CEILINGS TO RECEIVE P4 VERTICAL FACE OF SOFFITS TO MATCH ADJACENT WALL COLOR, TYP. UNLESS OTHERWISE NOTED.
- WHERE WORK IMPACTS EXISTING CEILINGS TO REMAIN, CONTRACTOR IS RESPONSIBLE FOR LEAVING ALL DISRUPTED AREAS IN A FINISHED STATE ACCEPTABLE TO ARCHITECT.
- WINDOW TREATMENTS INDICATED TO REMAIN SHALL BE PROTECTED AND/OR STORED DURING CONSTRUCTION.
- REFER TO ELECTRICAL PLANS IN CONJUNCTION WITH ARCHITECTURAL RCPs.
- FOR DISCREPANCIES BETWEEN ARCHITECTURAL AND MEP SCOPE, CONTRACTOR SHALL ALWAYS INCLUDE THE GREATER SCOPE. FURTHERMORE, DISCREPANCIES SHALL BE SUBMITTED IN RFI FORMAT FOR CLARIFICATION AND FINAL DIRECTION.
- ANY FIELD CONFLICTS THAT ARISE DEVIATING FROM PLAN DESIGNATED CEILING HEIGHTS SHALL BE REVIEWED WITH ARCHITECT.
- WHERE CEILINGS ARE NEW, MEP DEVICE COVERS ARE TO BE NEW.
- REFER TO 100-A-220 FOR TYP. ACT CEILING TRANSITION AT PARTITION DETAIL.