



BLI LEVEL 4 RENOVATION

CONSTRUCTION DOCUMENT

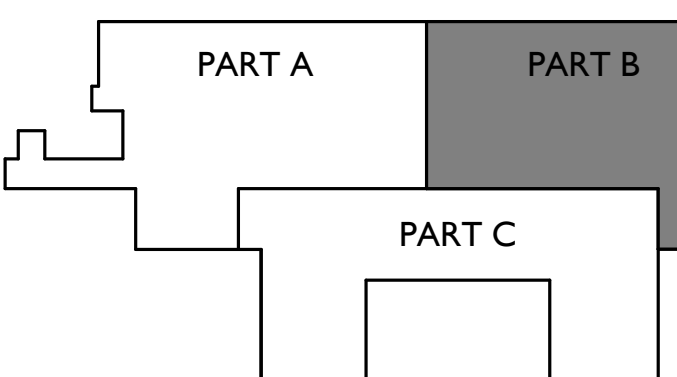
Owner Brigham and Women's Hospital
75 Francis Street
Boston, MA 02115
Tel. 617.732.6000
Partners Real Estate & Facilities
20 Kent Street
Brookline, MA 02445

M/E/P/F Bard, Rao + Athanas
Consulting Engineers, LLC
10 Guest St., 4th Floor
Boston, MA, 02135
Tel. 617.254.0016

Stamp

Revisions	No.	Description	Date
	2	PERMIT SET	03/28/17
	1	PC BID ADDENDUM	03/06/17

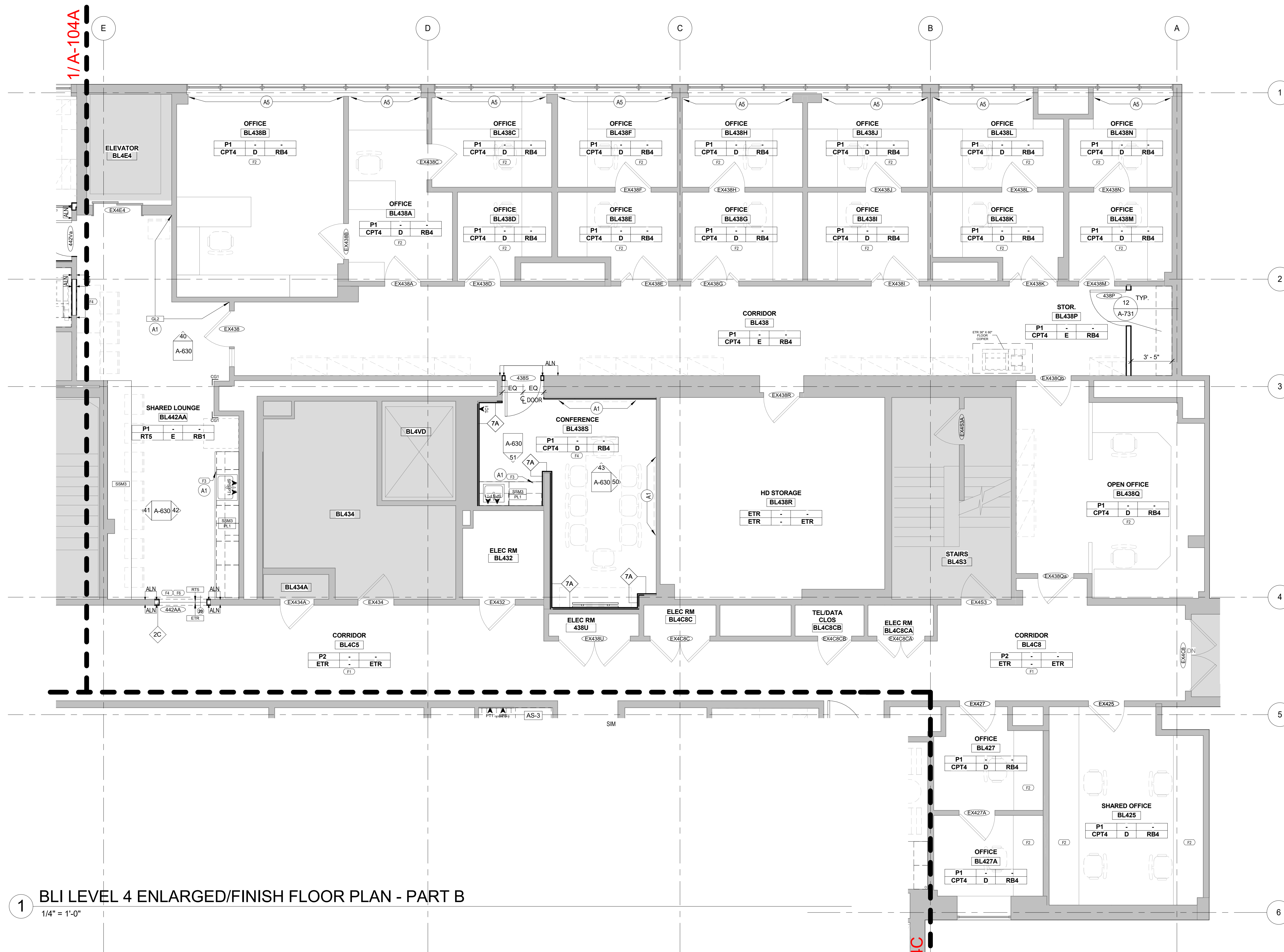
KEY PLAN



Drawing Title

BLI LEVEL 4 ENLARGED PLAN PART B

Job Number 35017-00 Drawing No. A-104B
Drawn by NM
Checked JM
Date 02/10/17
Scale As indicated



PLAN LEGEND

	NEW PARTITION
	NEW ITEM
	EXISTING PARTITION
	EXISTING ITEM
	FURNITURE, NIC SEE FURNITURE PLAN
	EQUIPMENT, NIC
	NOT IN SCOPE

ENLARGED PLAN GENERAL NOTES:

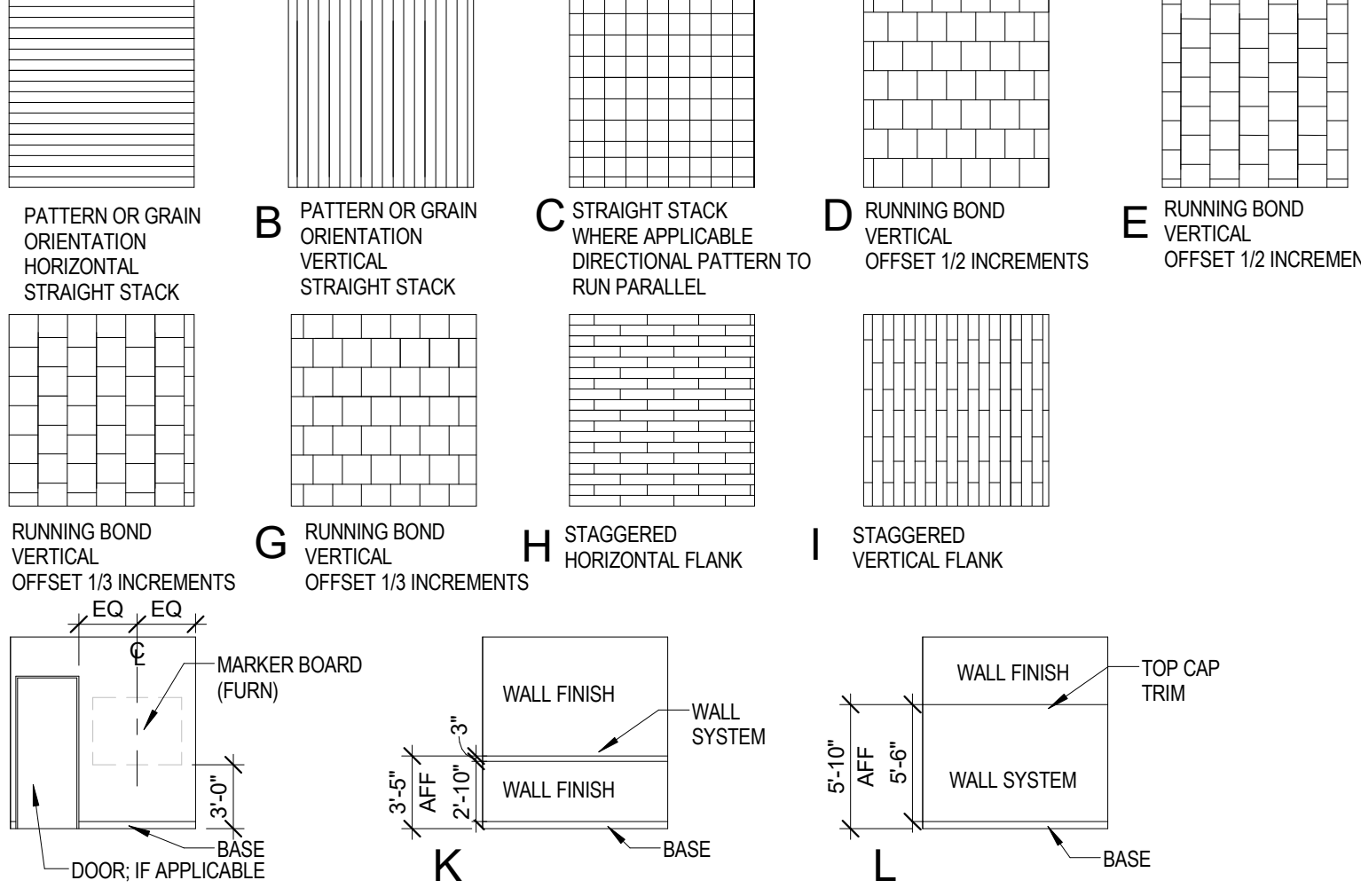
- DIMENSIONS NOTED SHALL BE FROM FINISH FACE TO FINISH FACE (I.E. FACE OF CERAMIC TILE TO FACE OF CERAMIC TILE).
- NOTIFY ARCHITECT OF CONDITIONS WHERE CLEAR (CLR) OR CRITICAL DIMENSIONS ARE DESIGNATED BUT CANNOT BE MET OR WHERE CORRIDOR/ASILE WIDTH CANNOT MEET THE MINIMUM REQUIREMENTS (3'-8" UON).
- ALL SHOP DRAWINGS SHALL BE FIELD VERIFIED.
- MAINTAIN FINISH FLOOR DATUM THROUGHOUT THE CONTRACT AREA SUCH THAT ALL DIMENSIONS INDICATED AS ABOVE FINISH FLOOR (AFF) ARE THE SAME ELEVATION.
- PARTITIONS THAT TERMINATE AT WINDOW MILLIONS SHOULD BE CENTERED ON MILLION. UON.
- ALIGN CENTERLINES OF ALL FIRE EXTINGUISHER CABINETS AND MEPPF DEVICES ON WALLS IN THE SAME LOCATION.
- ITEMS INDICATED AS "TYPICAL" OR "TYP" IMPLY THE CONTENT IS APPLICABLE TO ALL LIKE CONDITIONS UNTAGGED/NOTED IN VIEW. ITEMS INDICATED AS "SIMILAR" OR "SIM" IMPLY A MODIFICATION TO THE REFERENCED CONTENT TO BE MADE BY CONTRACTOR TO ACCOMMODATE VARIATIONS. VARIATIONS THAT ARE UNCLEAR TO GC SHALL BE SUBMITTED TO ARCHITECT FOR CLARIFICATION.
- ALL PARTITIONS SHALL BE TYPE 1CN UON.
- WHEN GWB DOES NOT EXTEND TO DECK ABOVE, ALL PARTITIONS, COLUMN ENCLOSURES, FURRED WALLS, ETC. EXTENDING THROUGH THE CEILING MUST BE FULLY CAPPED WITH GWB OR STUD TRACK. CONCEALED AREAS WITHIN WALLS SHALL NOT BE OPEN TO PLENUM AREAS.
- GLASS TO BE USED IN ALL LOCATIONS AS REQUIRED BY CODE. SIZE TO COMPLY WITH GANA RECOMMENDATIONS.
- FLOOR LEVELING SHALL BE INCLUDED 18" OC AT ALL GLASS PARTITIONS. UON.
- PROVIDE FIRE EXTINGUISHERS (WITH CABINETS) IN QUANTITIES AND LOCATIONS ON DWGS (MIN 16000 SQ FT & 75' MAX TRAVEL DISTANCE). REVIEW FINAL LOCATIONS WITH THE ARCHITECT/DESIGNER PRIOR TO START OF CONSTRUCTION. PARTITION DEPTH AT FIRE EXTINGUISHER CABINET LOCATIONS TO ACCOMMODATE FULL CONCEALMENT OF RECESSED CABINETS. UON.
- WALLS WITH FIRE EXTINGUISHER CABINETS TO BE DEEP ENOUGH TO HOUSE 24 1/2" X 10" X 6 1/2" R.O. SEE SPEC. WALL WITH AED CABINETS TO BE DEEP ENOUGH TO HOUSE 17 1/2" X 11 1/4" X 7" RECESSED CABINET. COORDINATE BLOCKING REQUIREMENTS AND LOCATIONS WITH ELEVATIONS AND DETAILS. PROVIDE FIRE-TREATED WOOD BLOCKING OR MINIMUM 0.0312-INCH THICK STEEL FLAT STRAP AND BACKING PLATE AT, BUT NOT LIMITED TO, THE FOLLOWING LOCATIONS: TOILET ACCESSORIES, CASEWORK, MILLWORK, DOOR WALL BUMPS, AND ALL OTHER WALL MOUNTED EQUIPMENT OR DEVICES.
- ALL EXISTING TO REMAIN PARTITIONS INDICATED ON THE LIFE SAFETY PLANS (SMOKE PARTITIONS, SMOKE BARRIERS, FIRE-RATED PARTITIONS, ETC) SHALL BE REVIEWED IN FIELD FOR COMPLIANCE AND DISCUSSED WITH OWNER AND ARCHITECT FOR DIRECTION.
- ALL EXISTING CONDITIONS (PARTITIONS, PENETRATIONS, VOIDS, ETC) MISSING, DAMAGED, OR IN NEED OF REPAIR TO MEET NEW WORK STANDARDS OF ACOUSTIC, LIFE SAFETY/FIRE PROOFING, AND FINISHED SURFACE LEVEL SHALL BE INCLUDED WITHIN THE SCOPE OF WORK.
- PATCH PRIME AND PAINT WALLS TO REMAIN WHERE WALL RECEPTACLES, FACE PLATES, ETC. ARE REMOVED. NEW BASE TO BE INSTALLED AT ALL LOCATIONS WHERE NEW FLOORING IS INSTALLED. UON. MOISTURE TEST SHALL BE PERFORMED AND IN ACCORDANCE WITH FLOOR MANUFACTURER'S REQUIREMENTS. IF MOISTURE CONTENT IS TOO HIGH, CONTRACTOR SHALL REMEDY PER MANUFACTURER'S ACCEPTABLE SOLUTIONS.
- FOR DISCREPANCIES BETWEEN ARCHITECTURAL AND MEP SCOPE, CONTRACTOR SHALL ALWAYS INCLUDE THE GREATER SCOPE. FURTHERMORE, DISCREPANCIES SHALL BE SUBMITTED IN REF FORMAT FOR CLARIFICATION AND FINAL DIRECTION.
- FIN TUBE DROP ACCESS PANELS TO BE LOCATED PER MEP DRAWINGS.

BLI LEVEL 4 ENLARGED/FINISH FLOOR PLAN - PART B

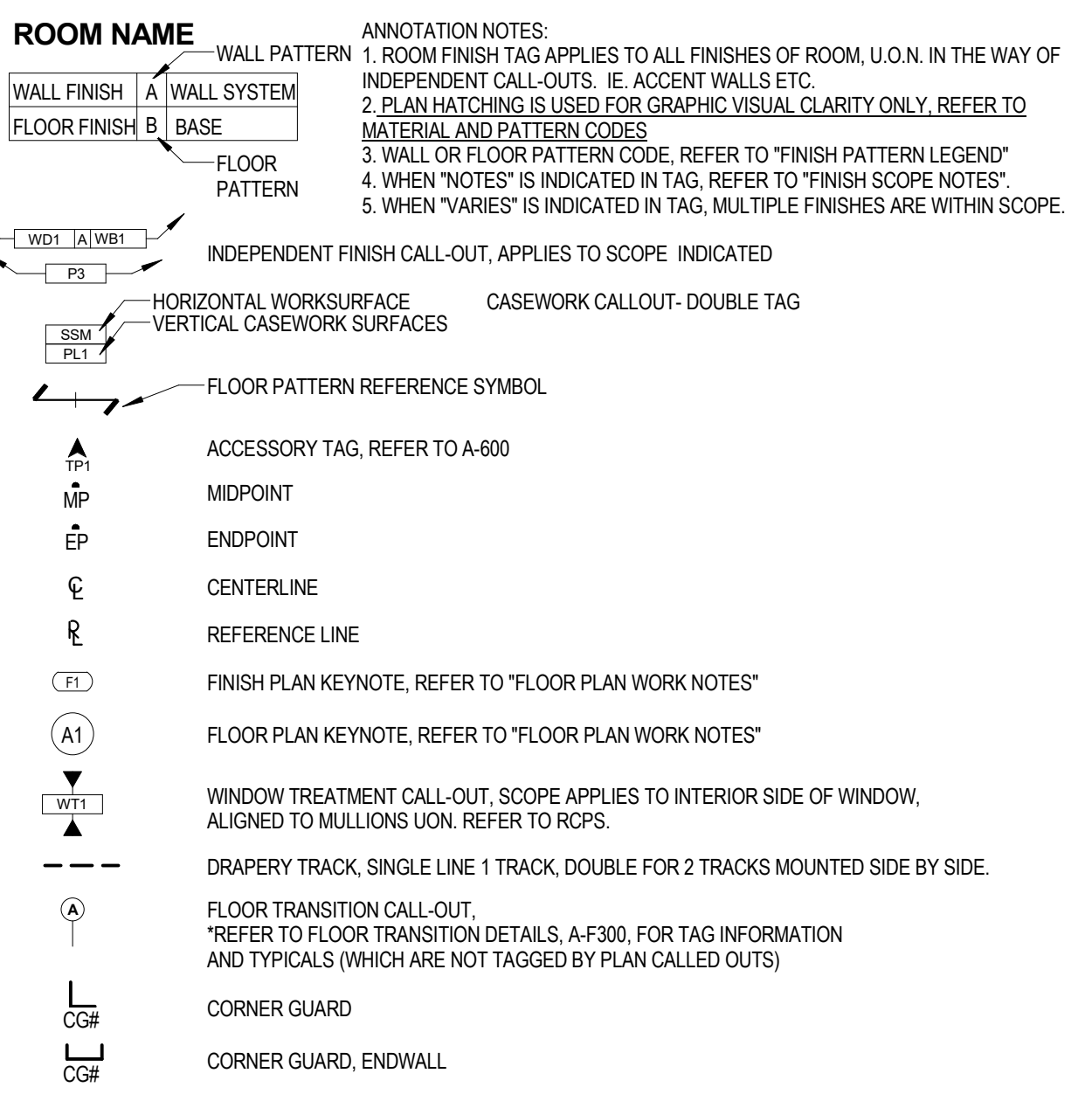
1/4" = 1'-0"

FINISH PATTERN LEGEND

* PATTERN LEGENDS FOR PATTERN REPEAT AND ORIENTATION ONLY. EXACT SHAPE, SIZE, SCALE ARE NOT REFLECTED. REFER TO FINISH PLANS & LEGEND FOR FURTHER MATERIAL, ASSIGNMENT AND SPEC INFORMATION.
* PATTERN TO BE ORIENTED TO RUN PARALLEL TO WALLS IF WALLS ARE ANGLED



FINISH PLAN ANNOTATION LEGEND



FINISH SCOPE GENERAL NOTES

- REFER TO RCPS, FINISH PLANS, INTERIOR ELEVATIONS & DETAILS FOR SCOPE EXTENTS
- ALL LAB CASEWORK: REFER TO INTERIOR ELEVATIONS / DETAILS / LAB SHEETS
 - EPOXY SOLID SURFACE FINISH (COUNTERTOPS, SINKS, PEGBOARDS, ETC.): SSM2, UON
 - PAINTED METAL FINISH: PREMIUM FINISH LEVEL TBD DURING SUBMITTAL PROCESS.
 - WOOD FINISH: REFER TO W30
- ALL NON-LAB CASEWORK: REFER TO INTERIOR ELEVATIONS / DETAILS
 - COUNTERTOPS: HORIZONTAL SURFACES, BACKSPASHES & SIDE SPLASHES: SSM1, UON
 - EXPOSED INTERIORS: PLUMB. REFER TO TYPICAL CASEWORK DETAILS SHEET
 - ALL CASEWORK TO RECEIVE STRAIGHT BASE WHERE CARPET IS SCHEDULED. BASE FINISH DETERMINED BY ADJACENT WALL BASE FINISH UON
- WALLS / WALL BASE ELEVATIONS:
 - ALL AMHREARWARD WALLS TO RECEIVE A QTY. OF (2) 14" ALUM. PEN TRAYS ADJACENT, CFCL. FOR DIRECT GLUE INSTALLATION. GHOSTING OF ADHESIVE IS NOT ACCEPTABLE. REFER TO MFG'S INSTRUCTIONS.
 - WHERE WALL PATTERNS ARE INDICATED, REFER TO PATTERNS LEGEND. MULTIPLE FINISHES MAY APPLY
 - PROVIDE BLOCKING AT: (1) ALL STAND-OFF MOUNTED GL2 LOCATIONS & PEN TRAYS, (2) AV EQUIPMENT, (3) WINDOW TREATMENTS & DRAPERY MOUNTING LOCATIONS, (4) TANK STORAGE. UON
 - ETR CONCRETE CURBS TO BE PAINTED P12 WHERE FLOOR & WALL BASE ARE NEW.
- DOORS:
 - WOOD DOORS, HM DOORS & FRAMES TO MATCH ADJACENT FINISH. REFER TO DOOR SCHEDULE FOR ADDITIONAL INFO. (ETR & NEW)
 - DOORS THAT ARE LOCATED WITHIN ACCENT MATERIAL WALLS ARE TO BE PAINTED TO MATCH AND SPLIT FRAME. (ETR & NEW)
 - ALL EXISTING HM DOORS & FRAMES WITHIN SCOPE BOUNDARY SHALL BE INCLUDED IN NEW PAINT SCOPE. DEEP CLEAN WOOD DOORS.
- FLOORS:
 - FLOOR SEAMING: PRODUCTS WITH A PATTERN REPEAT OR DIRECTIONAL GRAN / TEXTURE MUST BE ALIGNED OR MATCHED FOR SEAMLESS TRANSITIONS.
 - FLOORING TO EXTEND UNDER CASEWORK AND MILLWORK. UON
 - FLOOR LEVELING SHALL BE INCLUDED AT ALL GLASS PARTITIONS. 18" OC
- MEP, PA, AV DEVICES:
 - IF ANY OF THE BELOW NOTES CONFLICT WITH MEP DRAWINGS, THE BELOW NOTES TAKE PRECEDENCE FOR ASSUMPTIONS. ISSUE RFI FOR CLARIFICATION.
 - ALL ELEC. PANELS NOT ENCLOSED IN ELEC. CLOS OR RMS TO BE PAINTED ADJACENT WALL COLOR TYP. (ETR & NEW)
 - ALL FEC CABINETS, ACCESS PANELS, ELEC. PANELS, ETC. TO BE PAINTED ADJACENT WALL COLOR TYP. (ETR & NEW)
 - ALL FP STROBES / DEVICES TO BE CEILING MOUNTED TYP. AND WHITE FINISH UNLESS BUILDING STD DIFFERS.
 - IF ANY DEVICE IS SHOWN MOUNTED TO A WALL MATERIAL OTHER THAN DRYWALL OR CMU (WOOD, METAL, GLASS, SSM, ETC.) AND IS NOT SHOWN IN INTERIOR ELEVATIONS, CONFIRM AGREEMENT WITH ARCHITECT PRIOR TO MOUNTING.
 - ANY DEVICE OR EXPOSED MOUNTING HARDWARE LOCATED WITHIN WHITE CEILING IS TO BE WHITE. UON, BY CODE.
 - ALL SWITCHING / CONTROLS TO BE ALIGNED AND GANGED WHEN POSSIBLE. (NO SPACING BETWEEN)
- TYPICAL SCOPE NOTE (PROJECT WIDE UON):
 - ALL INTERIOR GLASS PARTITION SYSTEMS: REFER TO INTERIOR ELEVATIONS FOR GLASS TYPES INFORMATION
 - WINDOW TREATMENTS - SUNSCREEN TO BE MOUNTED CLOSEST TO EXTERIOR WINDOW, OPAQUE (BLACKOUT) TO THE INTERIOR SIDE IN DOUBLE LOCATIONS
 - EXTERIOR SILLS: TO BE SSM1, UON. REFER TO ARCH DETAILS.

FLOOR PLAN WORK NOTES

A/F#	DESCRIPTION
A1	REFER TO INTERIOR ELEVATION
A2	NEW AUTOCLAVE
A4	PROVIDE BLOCKING IN WALL, BRACKET AND CHAIN, TO SAFELY SECURE TANKS. SEE A-631 FOR ELEVATION DETAIL
A5	NEW FIN TUBE ENCLOSURE ON EXISTING UNIT
A7	RELOCATED DOOR
F1	EXISTING FINISHES TO REMAIN. PATCH AND MATCH WHERE NEW WORK DISRUPTS ETR
F2	EXISTING CASEWORK TO REMAIN. DEEP CLEAN AND REPAIR AS REQUIRED. REFER TO ETR-C CODE OF FINISH LEGEND FOR FURTHER INFORMATION
F3	FLOORING TO EXTEND UNDER CASEWORK/MILLWORK
F4	PATCH AND MATCH EXISTING FINISHES WHERE DISRUPTION FROM DEMO HAS OCCURRED OR CLEAN TRANSITION AND/OR REPAIR TO RECEIVE NEW WORK IS REQUIRED
F5	FLOOR PATTERN VARIES. INSTALLATION SHOULD INCLUDE A RANDOM PATTERN OF THE FOLLOWING FLOOR TILES WITH THE FOLLOWING PERCENTAGES: RT1 20%, RT2 40%, RT3 20%, RT4 20%
F6	PATCH FLOORING TO MATCH ETR FINISH AT TRANSITION
F7	FLOOR LEVELING SHALL BE INCLUDED IN EXISTING FLOOR PREP