



## BLI LEVEL 4 RENOVATION

### CONSTRUCTION DOCUMENT

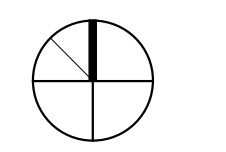
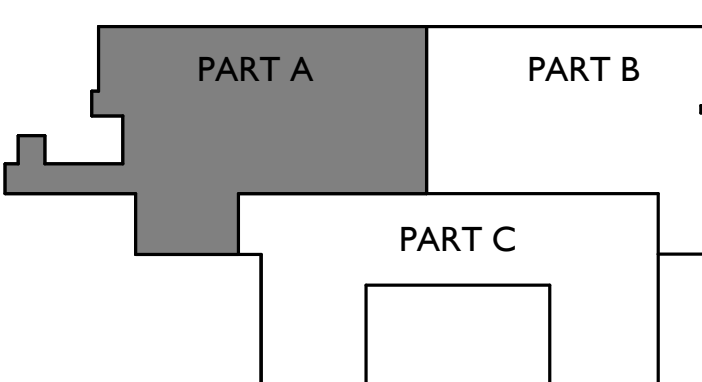
Owner Brigham and Women's Hospital  
75 Francis Street  
Boston, MA 02115  
Tel. 617.732.6000  
Partners Real Estate & Facilities  
20 Kent Street  
Brookline, MA 02445

M/E/P/F Bard, Rao + Athanas  
Consulting Engineers, LLC  
10 Guest St., 4th Floor  
Boston, MA, 02135  
Tel. 617.254.0016

Stamp

Revisions No.	Description	Date
2	PERMIT SET	03/28/17
1	PC BID ADDENDUM	03/06/17

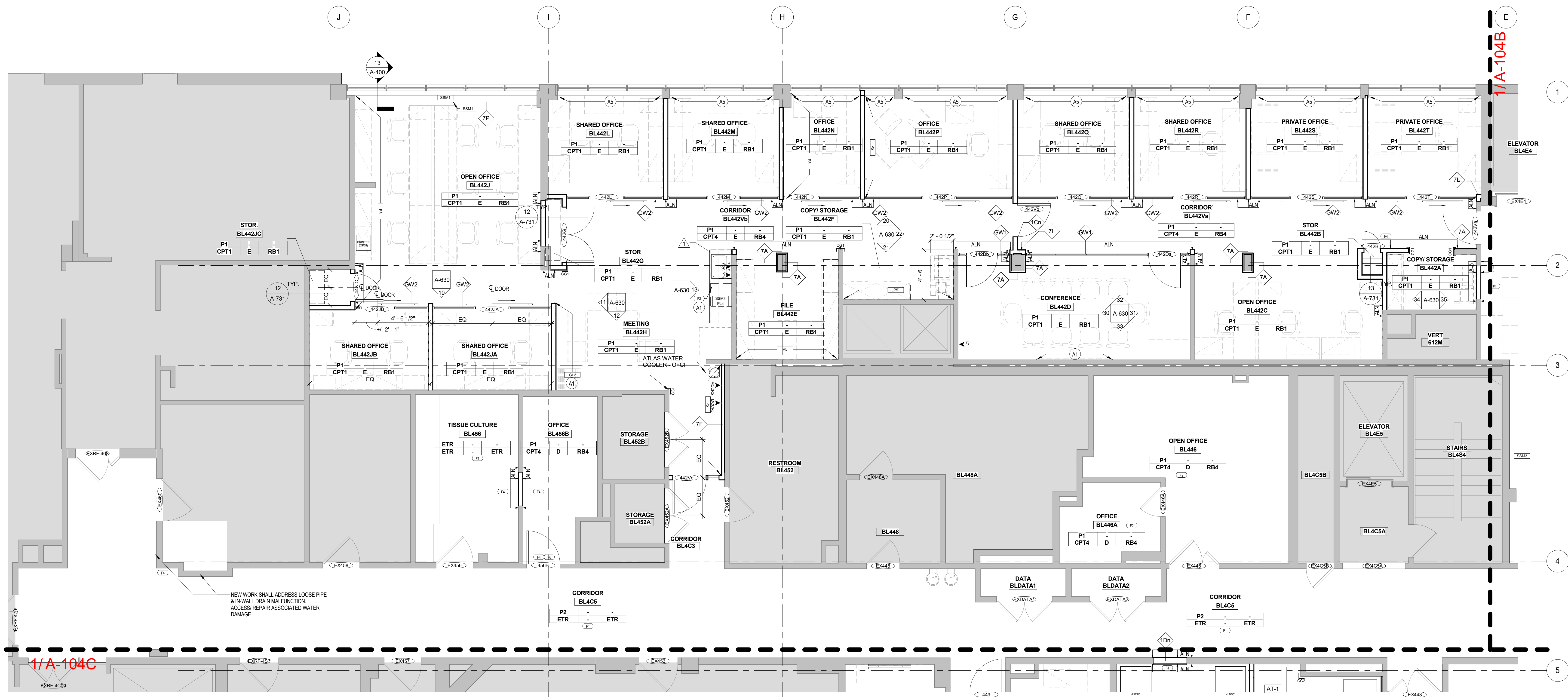
#### KEY PLAN



#### Drawing Title

### BLI LEVEL 4 ENLARGED PLAN PART A

Job Number 35017-00 Drawing No. A-104A  
 Drawn by NM  
 Checked JM  
 Date 02/10/17  
 Scale As indicated



## 1 BLI LEVEL 4 ENLARGED/FINISH FLOOR PLAN - PART A

1/4" = 1'-0"

AF#	DESCRIPTION
A1	REFER TO INTERIOR ELEVATION
A2	NEW AUTOCLAVE
A4	PROVIDE BLOCKING IN WALL, BRACKET AND CHAIN, TO SAFELY SECURE TANKS. SEE A-631 FOR ELEVATION DETAIL
A5	NEW FIN TUBE ENCLOSURE ON EXISTING UNIT
A7	RELOCATED DOOR
F1	EXISTING FINISHES TO REMAIN. PATCH AND MATCH WHERE NEW WORK DISRUPTS ETR
F2	EXISTING CASEWORK TO REMAIN. DEEP CLEAN AND REPAIR AS REQUIRED. REFER TO ETR-C CODE OF FINISH LEGEND FOR FURTHER INFORMATION
F3	FLOORING TO EXTEND UNDER CASEWORK/MILLWORK
F4	PATCH AND MATCH EXISTING FINISHES WHERE DISRUPTION FROM DEMO HAS OCCURRED OR CLEAN TRANSITION AND/OR REPAIR TO RECEIVE NEW WORK IS REQUIRED
F5	FLOOR PATTERN VARIES; INSTALLATION SHOULD INCLUDE A RANDOM PATTERN OF THE FOLLOWING FLOOR TILES WITH THE FOLLOWING PERCENTAGES: RT1 20%, RT2 40%, RT3 20%, RT4 20%
F6	PATCH FLOORING TO MATCH ETR FINISH AT TRANSITION
F7	FLOOR LEVELING SHALL BE INCLUDED IN EXISTING FLOOR PREP

#### PLAN LEGEND

[Symbol]	NEW PARTITION
[Symbol]	NEW ITEM
[Symbol]	EXISTING PARTITION
[Symbol]	EXISTING ITEM
[Symbol]	FURNITURE, NIC SEE FURNITURE PLAN
[Symbol]	EQUIPMENT, NIC
[Symbol]	NOT IN SCOPE

#### FINISH PLAN ANNOTATION LEGEND

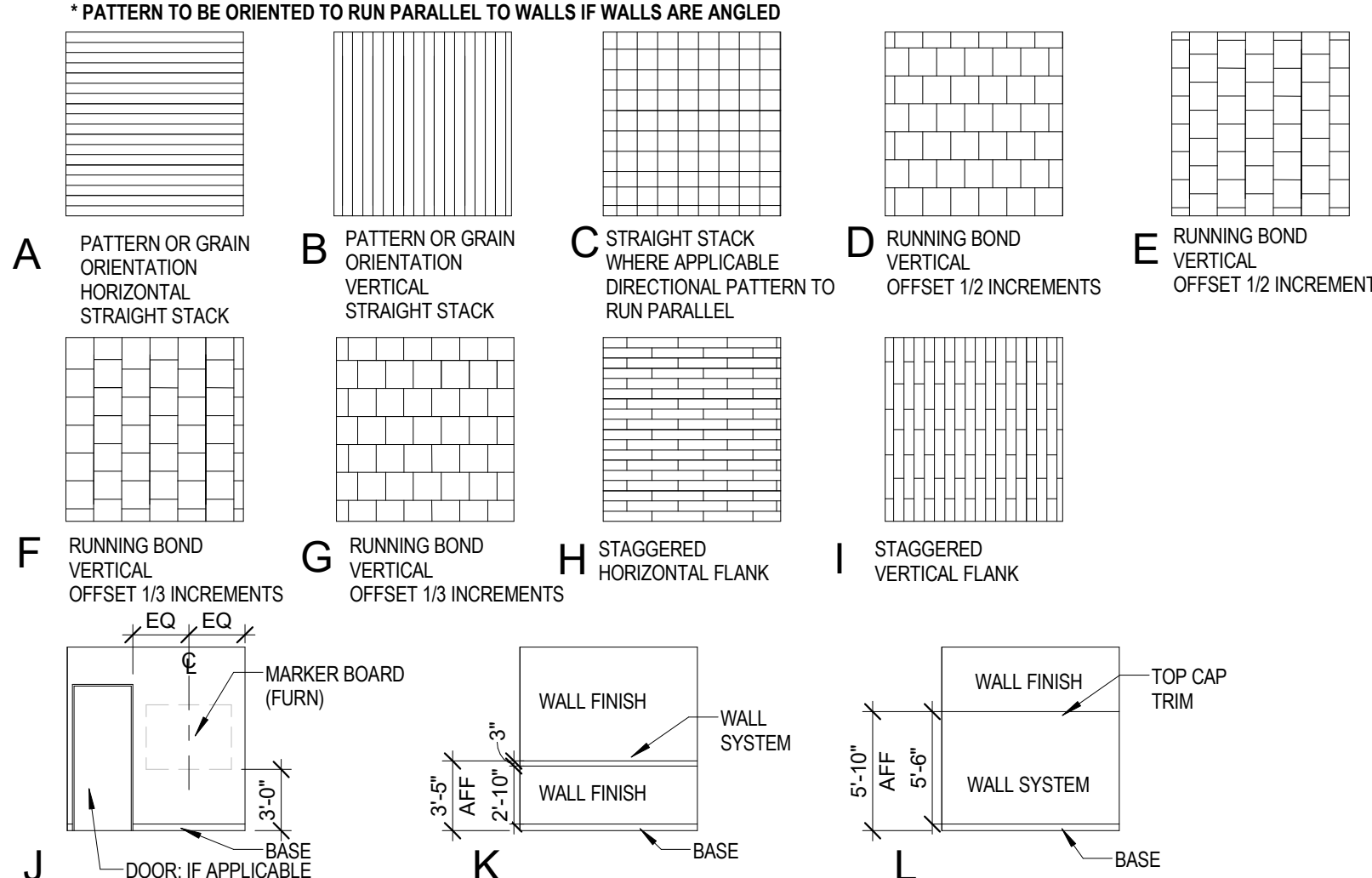
ROOM NAME	ANNOTATION NOTES
WALL FINISH	1. ROOM FINISH TAG APPLIES TO ALL FINISHES OF ROOM, U.O.N. IN THE WAY OF INDEPENDENT CALL-OUTS, IE, ACCENT WALLS ETC.
FLOOR FINISH	2. PLAN HATCHINGS IS USED FOR GRAPHIC VISUAL CLARITY ONLY. REFER TO MATERIAL AND PATTERN CODES
FLOOR PATTERN	3. WALL OR FLOOR PATTERN CODE, REFER TO "FINISH PATTERN LEGEND"
INDEPENDENT FINISH CALL-OUT	4. WHEN "NOTES" IS INDICATED IN TAG, REFER TO "FINISH SCOPE NOTES"
CASEWORK CALL-OUT	5. WHEN "VARIES" IS INDICATED IN TAG, MULTIPLE FINISHES ARE WITHIN SCOPE.
HORIZONTAL WORKSURFACE	CASEWORK CALL-OUT: DOUBLE TAG
FLOOR PATTERN REFERENCE SYMBOL	
ACCESSORY TAG	REFER TO A-600
MIDPOINT	
ENDPOINT	
CENTERLINE	
REFERENCE LINE	
FINISH PLAN KEYNOTE	REFER TO "FLOOR PLAN WORK NOTES"
FLOOR PLAN KEYNOTE	REFER TO "FLOOR PLAN WORK NOTES"
WINDOW TREATMENT CALL-OUT	SCOPE APPLIES TO INTERIOR SIDE OF WINDOW, ALIGNED TO MULLIONS UON. REFER TO ROPS.
DRAPERY TRACK	SINGLE LINE: 1 TRACK, DOUBLE FOR 2 TRACKS MOUNTED SIDE BY SIDE.
FLOOR TRANSITION CALL-OUT	REFER TO FLOOR TRANSITION DETAILS, A-F300, FOR TAG INFORMATION AND TYPICALS (WHICH ARE NOT TAGGED BY PLAN CALLED OUTS)
CORNER GUARD	
CORNER GUARD, ENDWALL	

#### FINISH SCOPE GENERAL NOTES

- REFER TO RCPS, FINISH PLANS, INTERIOR ELEVATIONS & DETAILS FOR SCOPE EXTENTS
- ALL LAB CASEWORK REFER TO INTERIOR ELEVATIONS / DETAILS / LAB SHEETS
  - EPOXY SOLID SURFACE FINISH (COUNTERTOPS, SINKS, PEGBOARDS, ETC.); SSM2, UON
  - PAINTED METAL FINISH: PREMIUM FINISH LEVEL, TIED DURING SUBMITTAL PROCESS.
  - WOOD FINISH: REFER TO WDD
  - UTILITY CONNECTIONS: WHITE COORDS, ALUM. FINISH BOXES
- ALL NON-LAB CASEWORK: REFER TO INTERIOR ELEVATIONS / DETAILS
  - COUNTERTOPS/ HORIZONTAL SURFACES, BACKSPLASHES & SIDE SPLASHES: SSM1, UON
  - EXPOSED INTERIORS: PLUM, REFER TO TYPICAL CASEWORK DETAILS SHEET
  - ALL CASEWORK TO RECEIVE STRAIGHT BASE WHERE CARPET IS SCHEDULED, BASE FINISH DETERMINED BY ADJACENT WALL BASE FINISH UON
- WALLS / WALL BASE ELEVATIONS:
  - ALL MARKERBOARD WALLS TO RECEIVE A QTY. OF (2) 1/4" ALUM. PEN TRAYS ADJACENT, CFCL. FOR DIRECT GLUE INSTALLATION. GHOSTING OF ADHESIVE IS NOT ACCEPTABLE. REFER TO MFG'S INSTRUCTIONS.
  - WHERE WALL PATTERNS ARE INDICATED, REFER TO PATTERNS LEGEND, MULTIPLE FINISHES MAY APPLY
  - PROVIDE BLOCKING AT: (1) ALL STAND-OFF MOUNTED GLZ LOCATIONS & PEN TRAYS, (2) AV EQUIPMENT, (3) FRAME (ETR & NEW)
  - ALL EXISTING HM DOORS & FRAMES WITHIN SCOPE BOUNDARY SHALL BE INCLUDED IN NEW PAINT SCOPE. DEEP CLEAN WOOD DOORS.
- DOORS:
  - WOOD DOORS, HM DOORS & FRAMES TO MATCH ADJACENT FINISH. REFER TO DOOR SCHEDULE FOR ADDITIONAL INFO (ETR & NEW)
  - DOORS THAT ARE LOCATED WITHIN ACCENT MATERIAL WALLS ARE TO BE PAINTED TO MATCH AND SPLIT FRAME (ETR & NEW)
  - ALL EXISTING HM DOORS & FRAMES WITHIN SCOPE BOUNDARY SHALL BE INCLUDED IN NEW PAINT SCOPE. DEEP CLEAN WOOD DOORS.
- FLOORS:
  - FLOOR SEAMING: PRODUCTS WITH A PATTERN REPEAT OR DIRECTIONAL GRAIN / TEXTURE MUST BE ALIGNED OR MATCHED FOR SEAMLESS TRANSITIONS
  - FLOORING TO EXTEND UNDER CASEWORK AND MILLWORK, UON
  - FLOOR LEVELING SHALL BE INCLUDED AT ALL GLASS PARTITIONS, 18" OC
- MEP, PIP, AV DEVICES:
  - IF ANY OF THE BELOW NOTES CONFLICT WITH MEP DRAWINGS, THE BELOW NOTES TAKE PRECEDENCE FOR ASSUMPTIONS, ISSUE RFI FOR CLARIFICATION
  - ALL INTERIOR GLASS PARTITION SYSTEMS: REFER TO INTERIOR ELEVATIONS, CONFIRM PLACEMENT WITH ARCHITECT PRIOR TO MOUNTING.
  - ALL FEC CABINETS, ACCESS PANELS, ELEC PANELS, ETC. TO BE PAINTED ADJACENT WALL COLOR TYP. (ETR & NEW)
  - ALL FP STROBES / DEVICES TO BE CEILING MOUNTED TYP. AND WHITE FINISH UNLESS BUILDING STD DIFFERS
  - IF ANY DEVICE IS SHOWN MOUNTED TO A WALL MATERIAL OTHER THAN DRYWALL OR CMU (WOOD, METAL, GLASS, SSM, ETC.) AND IS NOT SHOWN IN INTERIOR ELEVATIONS, CONFIRM PLACEMENT WITH ARCHITECT PRIOR TO MOUNTING.
  - ANY DEVICE OR EXPOSED MOUNTING HARDWARE LOCATED WITHIN WHITE CEILING IS TO BE WHITE, UON, BY CODE.
  - ALL SWITCHING / CONTROLS TO BE ALIGNED AND GANGED WHEN POSSIBLE. (NO SPACING BETWEEN)
  - TYPICAL SCOPE NOTE (PROJECT WIDE UON):
    - ALL INTERIOR GLASS PARTITION SYSTEMS: REFER TO INTERIOR ELEVATIONS FOR GLASS TYPES INFORMATION
    - WINDOW TREATMENTS - SUNSCREEN TO BE MOUNTED CLOSEST TO EXTERIOR WINDOW, OPAQUE (BLACKOUT) TO THE INTERIOR SIDE IN DOUBLE LOCATIONS
    - EXTERIOR SILLS: TO BE SSM1, UON. REFER TO ARCH DETAILS.

#### FINISH PATTERN LEGEND

\* PATTERN LEGENDS FOR PATTERN REPEAT AND ORIENTATION ONLY. EXACT SHAPE, SIZE, SCALE ARE NOT REFLECTED. REFER TO FINISH PLANS & LEGEND FOR FURTHER MATERIAL, ASSIGNMENT AND SPEC INFORMATION. \* PATTERN TO BE ORIENTED TO RUN PARALLEL TO WALLS IF WALLS ARE ANGLED



#### ENLARGED PLAN GENERAL NOTES:

- DIMENSIONS NOTED SHALL BE FROM FINISH FACE TO FINISH FACE (I.E. FACE OF CERAMIC TILE TO FACE OF CERAMIC TILE)
- NOTIFY ARCHITECT OF CONDITIONS WHERE CLEAR (CLR) OR CRITICAL DIMENSIONS ARE DESIGNATED BUT CANNOT BE MET OR WHERE CORRIDOR/SILE WIDTH CANNOT MEET THE MINIMUM REQUIREMENTS (3'-8" UON) ALL SHOP DRAWINGS SHALL BE FIELD VERIFIED.
- MAINTAIN FINISH FLOOR DATUM THROUGHOUT THE CONTRACT AREA SUCH THAT ALL DIMENSIONS INDICATED AS ABOVE FINISH FLOOR (AFF) ARE THE SAME ELEVATION.
- PARTITIONS THAT TERMINATE AT WINDOW MULLIONS SHOULD BE CENTERED ON MULLION, UON.
- ALIGN CENTERLINES OF ALL FIRE EXTINGUISHER CABINETS AND MEPPY DEVICES ON WALLS IN THE SAME LOCATION.
- ITEMS INDICATED AS "TYPICAL" OR "TYP" IMPLY THE CONTENT IS APPLICABLE TO ALL LIKE CONDITIONS UNLESS NOTED IN VIEW. ITEMS INDICATED AS "SIMILAR" OR "SIM" IMPLY A MODIFICATION TO THE REFERENCED CONTENT TO BE MADE BY CONTRACTOR TO ACCOMMODATE VARIATIONS. VARIATIONS THAT ARE UNCLEAR TO GC SHALL BE SUBMITTED TO ARCHITECT FOR CLARIFICATION.
- ALL PARTITIONS SHALL BE TYPE ICL, UON
- WHEN GWB DOES NOT EXTEND TO DECK ABOVE, ALL PARTITIONS, COLUMN ENCLOSURES, FURRED WALLS, ETC. EXTENDING THROUGH THE CEILING MUST BE FULLY CARPED WITH GWB OR STUD TRACK. CONCEALED AREAS WITHIN WALLS SHALL NOT BE OPEN TO PLenum AREAS.
- GLASS TO BE USED IN ALL LOCATIONS AS REQUIRED BY CODE. SIZE TO COMPLY WITH GANA RECOMMENDATIONS.
- FLOOR LEVELING SHALL BE INCLUDED 18" OC AT ALL GLASS PARTITIONS, UON.
- PROVIDE FIRE EXTINGUISHERS (WITH CABINETS) IN QUANTITIES AND LOCATIONS ON DWGS (MIN 1000 SQ FT & 75 MAX TRAVEL DISTANCE). REVIEW FINAL LOCATIONS WITH THE ARCHITECT/DESIGNER PRIOR TO START OF CONSTRUCTION. PARTITION DEPTH AT FIRE EXTINGUISHER CABINET LOCATIONS TO ACCOMMODATE FULL CONCEALMENT OF RECESSED CABINETS, UON
- WALLS WITH FIRE EXTINGUISHER CABINETS TO BE DEEP ENOUGH TO HOUSE 2 1/2" X 10" X 1/2" R.O. SEE SPEC. WALLS WITH AED CABINETS TO BE DEEP ENOUGH TO HOUSE 17 3/8" X 17 3/8" X 7/8" RECESSED CABINET. COORDINATE BE BLOCKING REQUIREMENTS AND LOCATIONS WITH ELEVATIONS AND DETAILS PROVIDE FIRE TREATED WOOD BLOCKING OR MINIMUM 0.0319-INCH THICK STEEL FLAT STRAP AND BACKING PLATE AT, BUT NOT LIMITED TO, THE FOLLOWING LOCATIONS: TOILET ACCESSORIES, CASEWORK, MILLWORK, DOOR WALL BUMPERS, AND ALL OTHER WALL MOUNTED EQUIPMENT OR DEVICES.
- ALL EXISTING TOXIC PARTITIONS INDICATED ON THE LIFE SAFETY PLANS (SMOKE PARTITIONS, SMOKE BARRIERS, FIRE-RATED PARTITIONS, ETC) SHALL BE REVIEWED IN FIELD FOR COMPLIANCE AND DISCUSSED WITH OWNER AND ARCHITECT FOR DIRECTION.
- ALL EXISTING CONDITIONS (PARTITIONS, PENETRATIONS, VOIDS, ETC) MISSING, DAMAGED, OR IN NEED OF REPAIR TO MEET NEW WORK STANDARDS OF ACUSTIC, LIFE SAFETY/FIRE PROOFING, AND FINISHED SURFACE LEVEL, SHALL BE INCLUDED WITHIN THE SCOPE OF WORK.
- PATCH, PRIME AND PAINT WALLS TO REMAIN WHERE WALL RECEPTACLES, FACE PLATES, ETC. ARE REMOVED. NEW BASE TO BE INSTALLED AT ALL LOCATIONS WHERE NEW FLOORING IS INSTALLED, UON. MOISTURE TEST SHALL BE PERFORMED AND IN ACCORDANCE WITH FLOOR MANUFACTURERS REQUIREMENTS. IF MOISTURE CONTENT IS TOO HIGH, CONTRACTOR SHALL REVIEW MANUFACTURERS ACCEPTABLE SOLUTIONS.
- FOR DISCREPANCIES BETWEEN ARCHITECTURAL AND MEP SCOPE, CONTRACTOR SHALL ALWAYS INCLUDE THE GREATER SCOPE, FURTHERMORE, DISCREPANCIES SHALL BE SUBMITTED IN RFI FORMAT FOR CLARIFICATION AND FINAL DIRECTION.
- FIN TUBE DROP ACCESS PANELS TO BE LOCATED PER MEP DRAWINGS.