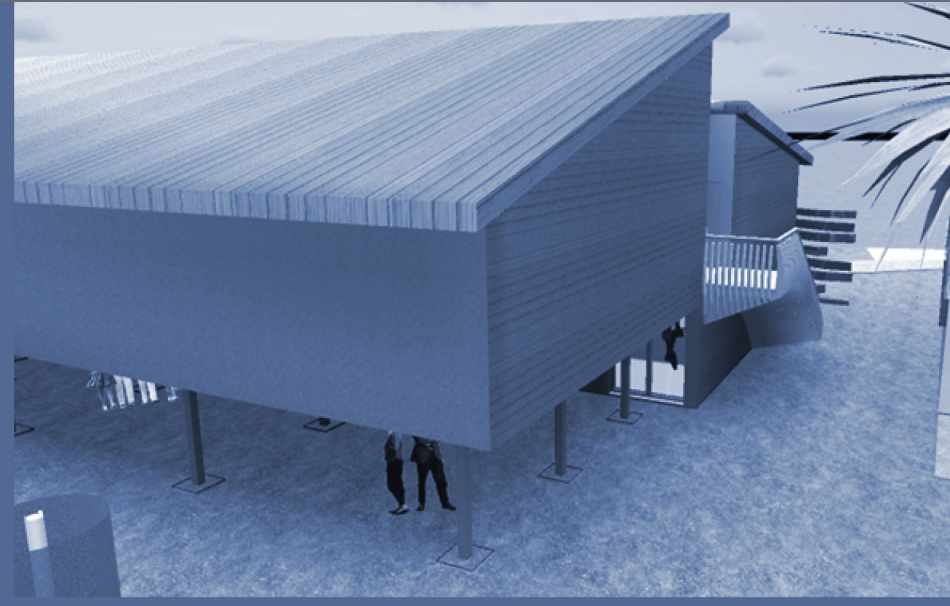


# SUSTAINABILITY: A SELF SUSTAINED ECOSYSTEM



**COOL ROOF SYSTEM**  
 ANGLED TO COLLECT RAIN AND THE SUN'S RAYS, USES IPS PANELS WHICH ACT AS CONTINUOUS INSULATION FREE OF THERMAL BRIDGING, ARE MADE FROM 35% RECYCLED MATERIAL AND ARE 100% RECYCLABLE

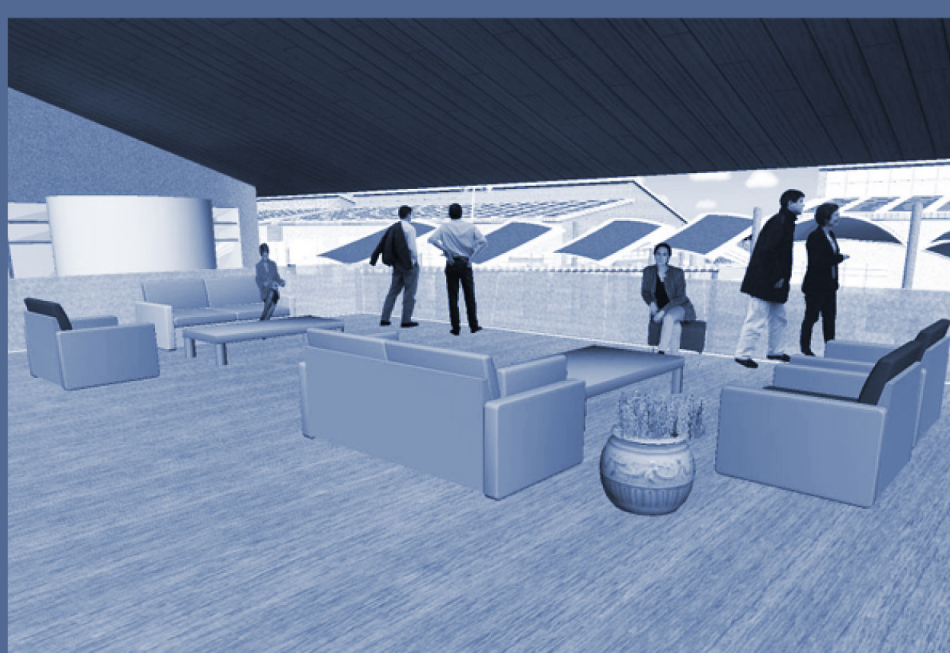


**RAINSCREEN**  
 ENSURES MOISTURE PROTECTION AND MADE FROM RECYCLED WOOD



**RECLAIMED LIMESTONE**  
 FROM ONSITE RUINS- ACTS AS A THERMAL MASS AND WILL BE PAIRED WITH RADIANT BARRIER INSULATION

**GLASS BOTTLE CEILING**  
 RECYCLED GLASS BOTTLES FROM CRUISE SHIPS WILL BE USED TO CONSTRUCT A DECORATIVE CEILING IN THE ENTRY OF THE BUILDING, EMPHASIZING RECYCLING AND CREATING A VISUAL CONNECTION TO MARINE LIFE, INTENDED TO LOOK LIKE SCALES



**COCONUT COIR**  
 LIGHTING ON CAMPUS WILL USE SHADERS MADE FROM FIBERS OF COCONUTS, CREATING A DIFFUSED GLOW



**COCONUT PALM WOOD**  
 WOOD FROM THE TREES REMOVED DURING EXCAVATION WILL BE USED FOR FLOORING AND MULLIONS THROUGHOUT THE BUILDING. THIS PREVENTS POLLUTION DUE TO BURNING THE REMOVED TREES

**ECO LINO FLOORING**  
 USED IN LABS IT HAS GOOD ANTI-BACTERIAL QUALITIES AND LOW EMBODIED ENERGY

**FRESH-AIR CHOICE PAINT**  
 NO VOCs

