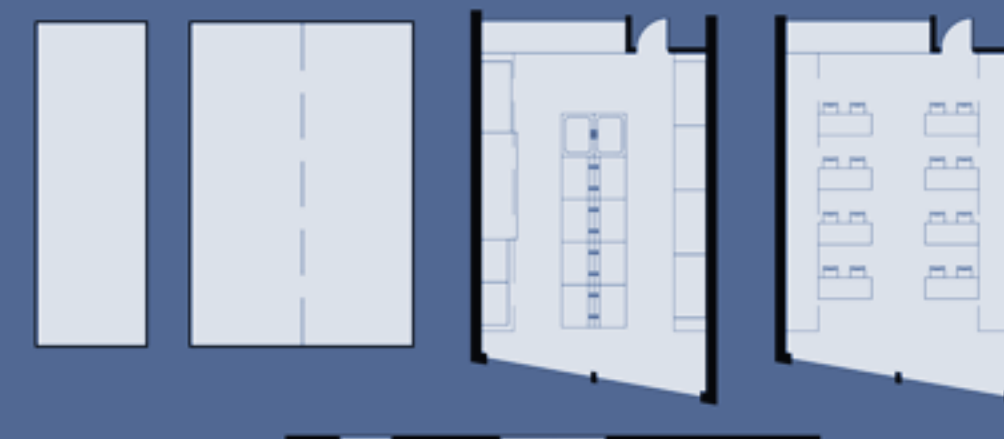


**LAB BUILDING**



**MODULARITY**  
 THE BUILDING IS BASED ON A 10'-6" X 30'-6" MODULE

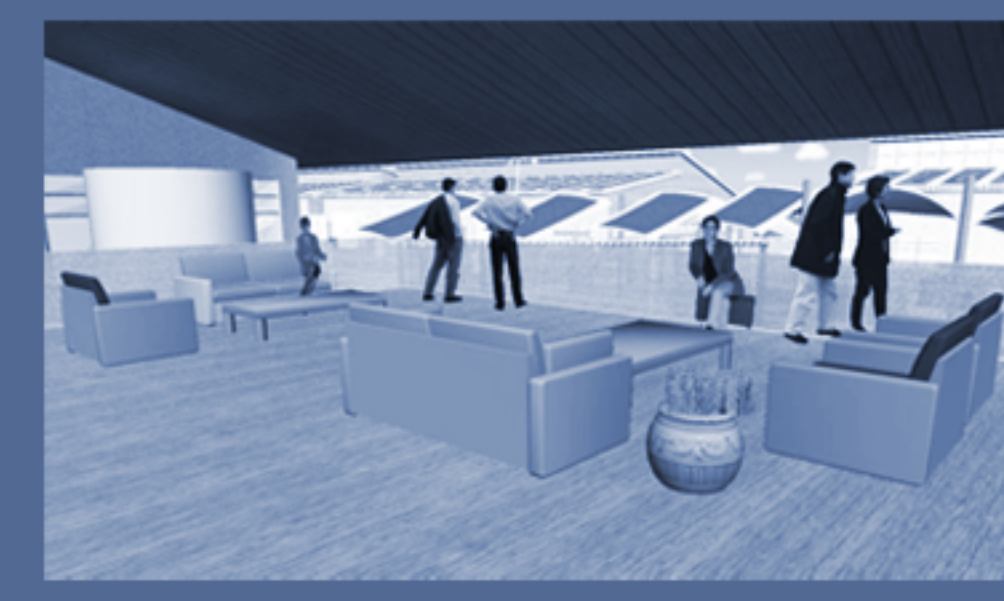
THE LABS AND OTHER SPACES ARE SLIGHT ALTERATIONS OF THE MODULE, WHICH ALLOWS FOR EASY BUILDING AND POSSIBLE EXPANSION IN THE FUTURE



**LABS**  
 THE LAB SPACES ARE TWO MODULES WIDE. THEY ARE LAID OUT WITH THE LARGE EQUIPMENT ALONG ONE WALL FOR EASE OF HVAC DESIGN AND THE REST OF THE CASEWORK IS MOVEABLE FOR FLEXIBILITY IN THE SPACES. THERE ARE SOFFITS WHICH ALLOW FOR HVAC SYSTEMS, WHILE SEPARATING THE SPACE INTO TWO LEVELS: WORKING LEVEL AND OBSERVATION SPACE



**CLASSROOMS**  
 THE SPACES ARE KEPT OPEN, WITH A LOT OF WINDOWS FOR EASY VISIBILITY TO ALL OF THE SYSTEMS INTEGRATED INTO THE BUILDING AND SITE. THE IDEA IS TO ENCOURAGE LEARNING ABOUT BOTH MARINE BIOLOGY AND SUSTAINABILITY THROUGH BOTH TEACHING IN THE CLASSROOM AS WELL AS THROUGH OBSERVATION AND INTERACTION



**OUTDOOR GATHERING**  
 THE BUILDING INCLUDES OUTDOOR GATHERING SPACES BOTH ON THE SECOND LEVEL OF THE BUILDING AND UNDER THE OVERHANGING PORTION OF THE BUILDING. THIS IS INTENDED TO PROVIDE RELAXATION FOR EMPLOYEES AND TO PROMOTE COLLABORATION AND CONVERSATION FOR EVERYONE ON SITE.

