

Schematic Design Proposal For an Art Center in Plymouth Township
Lawrence Technological University, AD5
Professor: Thomas Nashlen
Jurors: Ayers Morison, AIA; Nicholas Salwich, AIA

Table of Contents

Design Analysis

Site Analysis (1)

Program Analysis (2)

Concept Formation

Initial Concepts (3)

Concept Development (4)

Architectural Presentation

Site Plan (5)

Floor Plans (6, 7, 8, 9, 10, 11, 12)

Sections (13, 14)

Elevations (15, 16)

Partial Blow Up Elevation (17)

Supportive Graphics (18, 19)

Technical Presentation

Structure (20)

Construction Systems (21)

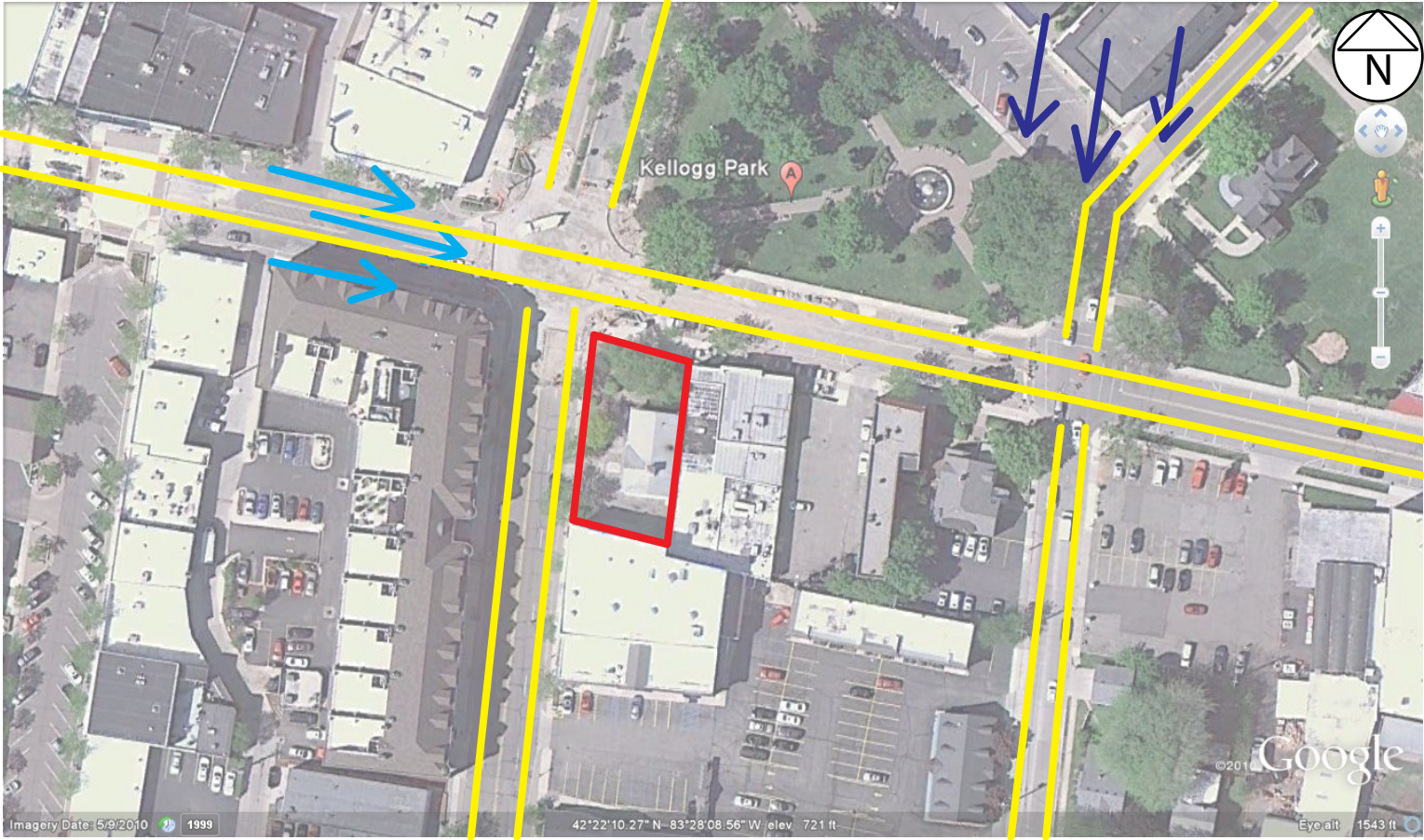
Environmental Systems (22)

Sustainability (23)

Technical Models (24)

Outline Specifications (25, 26, 27)

Site Analysis



- Kellogg Park offers a beautiful view on the Northern side of the site.
- Lots of pedestrian/ auto traffic on the North side of the site.
- Prevailing winds come from the West.
- Architctural style similar to 19th century Europe; lots of masonry, verandas and balconies.
- Surrounding structures include the Box Bar to the East (popular watering hole), the Mayflower Center to the West (mixed use shopping/commercial building), and the Meeting House to the South (wedding receptions locale).
- The buildings around keep the site in shade much of the time; some indirect sunlight from the North side.
- Air quality on the site will be improved somewhat by the proximity to the park.
- Slower vehicular traffic will reduce noise from proximity to the street; proximity to the Box Bar may increase noise levels at night.

- Key
- Site Location
 - Circulation
 - Prevailing Winds
 - North Winds



Sun Study

