

Stormy Kromer Ida's Walking Coat

F/W 2011-2012

For sale at retailers and current Stormy Kromer Mercantile webpage:

<http://www.stormykromer.com/womens/outerwear-and-apparel/ida-s-walking-coat>

also source for photos this page



Ida's Walking Coat \$229.99

It turns "I'm cold." into "How hot am I?" We make outerwear that weathers winter's worst, but if you're not a lumberjack or some sort of ice-road trucker, you might want to wear something more flattering. Like this 80/20 wool-blend beauty with princess seams, elbow and shoulder patches, and antiqued metal buttons. Because as it turns out, frostbite doesn't look that good on you.

Modern cut, unlined. 80% wool / 20% nylon. Made in USA with globally sourced materials. Dry clean only.

Stormy Kromer Ida's Walking Coat

F/W 2011-2012

Design idea:

Create a feminine, semi-fitted, 3/4 length wool coat to coordinate with new F/W 2011-2012 Ida's Mittens and Petal Pusher Cap.

Feeling of outdoorsy, casual, specialness, lasting quality.

Combine styling elements:

Retro women's hunting and sportswear

Current trends of soft angles and roundness

relate back to current Ida Kromer Vest and

F/W 2011-2012 SK Men's Town Coat and Airman's Jacket.

Semi tailored.

Freedom of movement.

Source new dressy metal shank buttons.

Create new women's plaid colorway.

Determine SK women's outerwear fit.

My process:

designed and sketched this coat. Submitted design options of seven unique fronts and seven unique backs. Design options not shown in this file, as they may be used for future development.

conducted study of women's fit and size grade standards of outdoor brands we admire.

conducted fit and pattern study of three women's coat brands I admired.

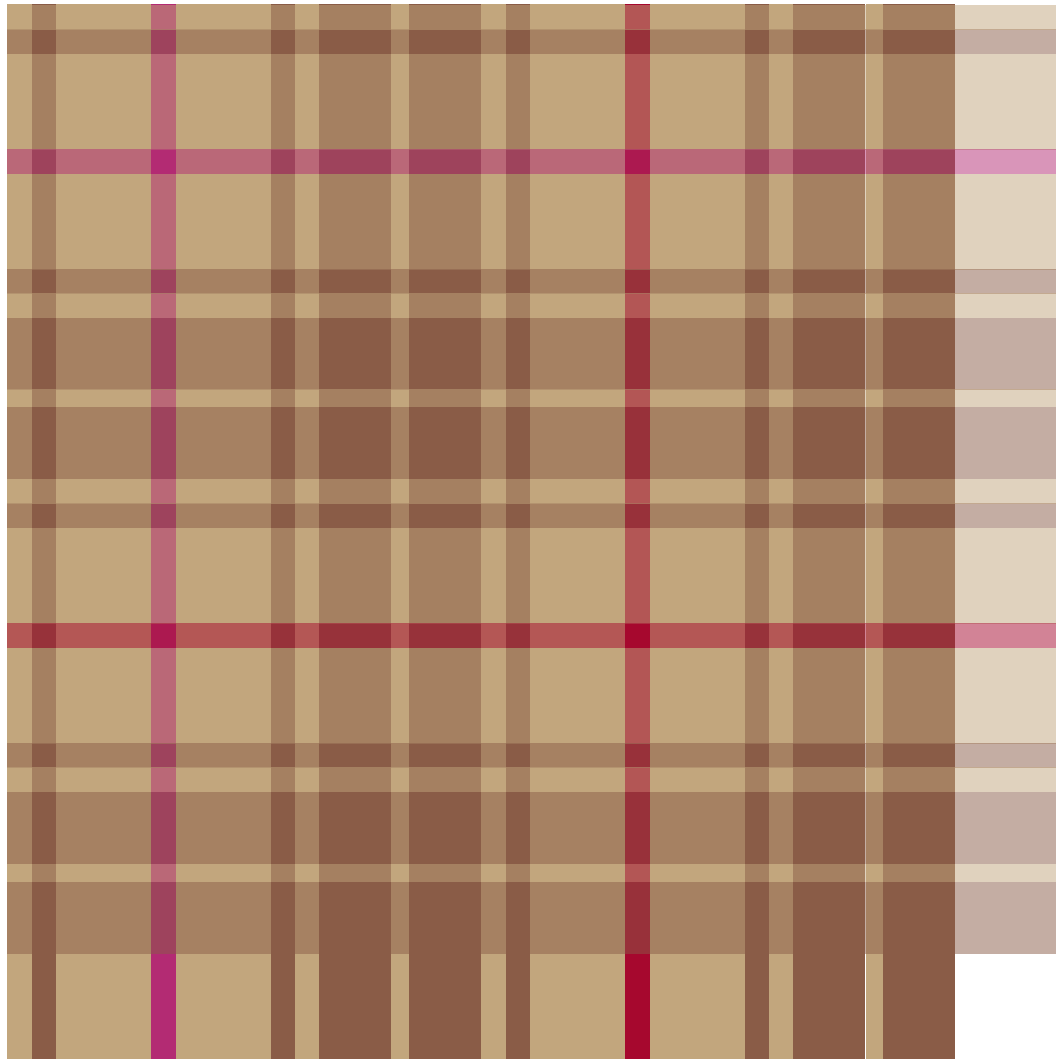
determined SK sample fit.

made first pattern combining best fit proportions.

made second and third patterns incorporating several styling changes

provided informal bill of materials in order for Engineering dept to create its' internal bill of materials for costing.

designed plaid patterns using Pantone Color Planner.



Direction:

Develop light background feminine plaid for Ida's Walking Coat, Ida Kromer Cap, future designs.

One new brown.

Coordinate with 2 current women's wool colors.

Color Source:

Pantone "Wonder" Color Planner FW 2011 2012

Colors picked from these themes:

New Monochrome

Opposition 2

Loose swatches

SK054 Women's ThreeQuarter Coat

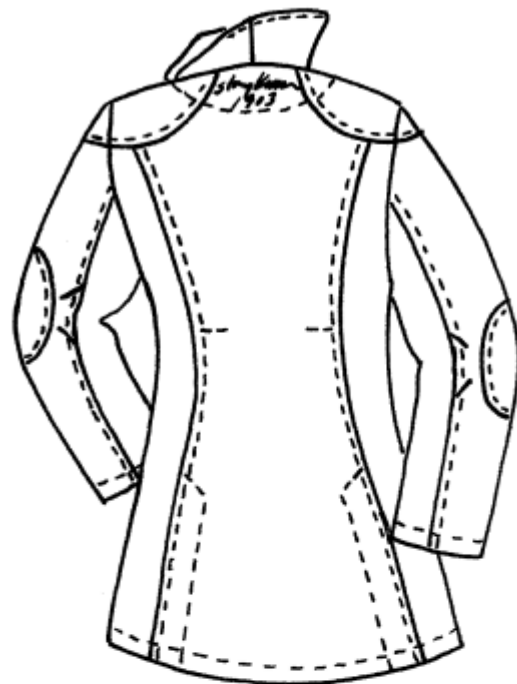
September 3, 2010

Second pattern sketch.

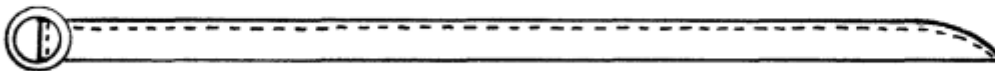
Front



Back



Separate Belt



New SK logo embroidery

To be developed

Final placement to be determined
alongside other SK new styles



Stormy Kromer Ida's Walking Coat

F/W 2011-2012

Photos show:

Second pattern sample fitting.

Experimenting with alternate pocket corner shapes.

Make third pattern with these changes: move princess to yoke seams, address wrinkly areas at side chest, omit belt, and raise vents.



Stormy Kromer Ida's Walking Coat

F/W 2011-2012

Photos show:

Third pattern sample fitting incorporating pattern changes per second sample fitting.

Body only.



Final sketch.



Inner top entry pocket
opening behind flap
Outer top entry pocket
under flap

#1: Inner top entry pocket
with cut-on flap.
#1A: Underlay flap facing
Bottom edge caught in flap fold.
#2: Outer top entry pocket



Inner folds of action back pleats
+ closed hem vents

Stormy Kromer Ida's Walking Coat

F/W 2011-2012

This photo shows:

Checking the production marker to ensure:

this is indeed correct pattern version of this style,
no changes occurred to these particular pieces in Optitex between second and third pattern,
all pieces are labeled correctly,
grain lines and seam allowances correct



Stormy Kromer Ida's Walking Coat

F/W 2011-2012

Photos show:

My own SK Ida's Walking Coat from current production in the Mapleberry colorway.

