

# Template Files Only Workflow

Hank  
New User



**Need:** To understand how the software works and review my data.  
**Problem:** Does he understand the difference between Template and Design files? How they are created and where they are found?

Sue  
Advanced User



**Need:** To get this assay set up fast and review my data.  
**Problem:** I (might) understand how to use this already and have a method. Don't make me re-learn this unless it's better.

Existing workflow for Design and Template Files

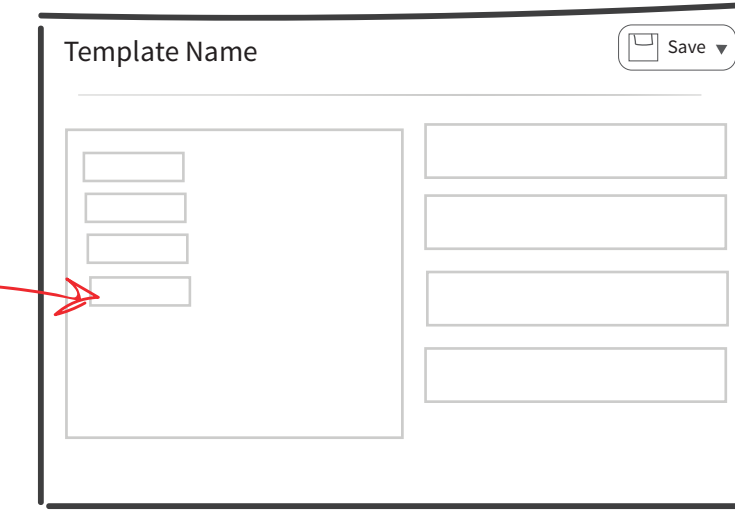
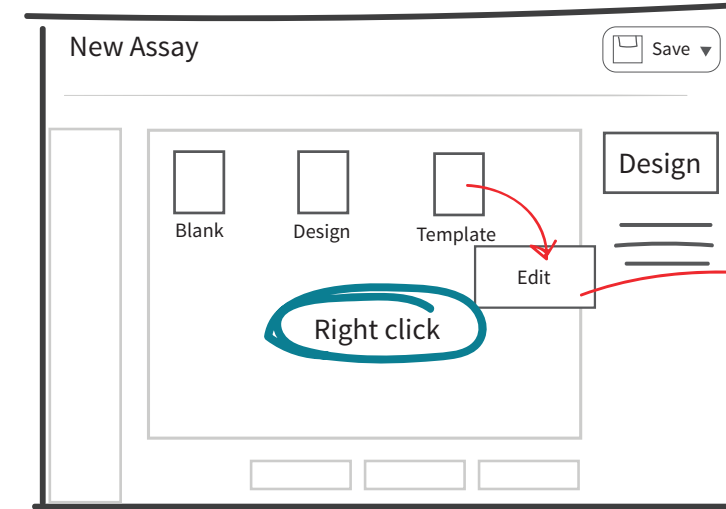
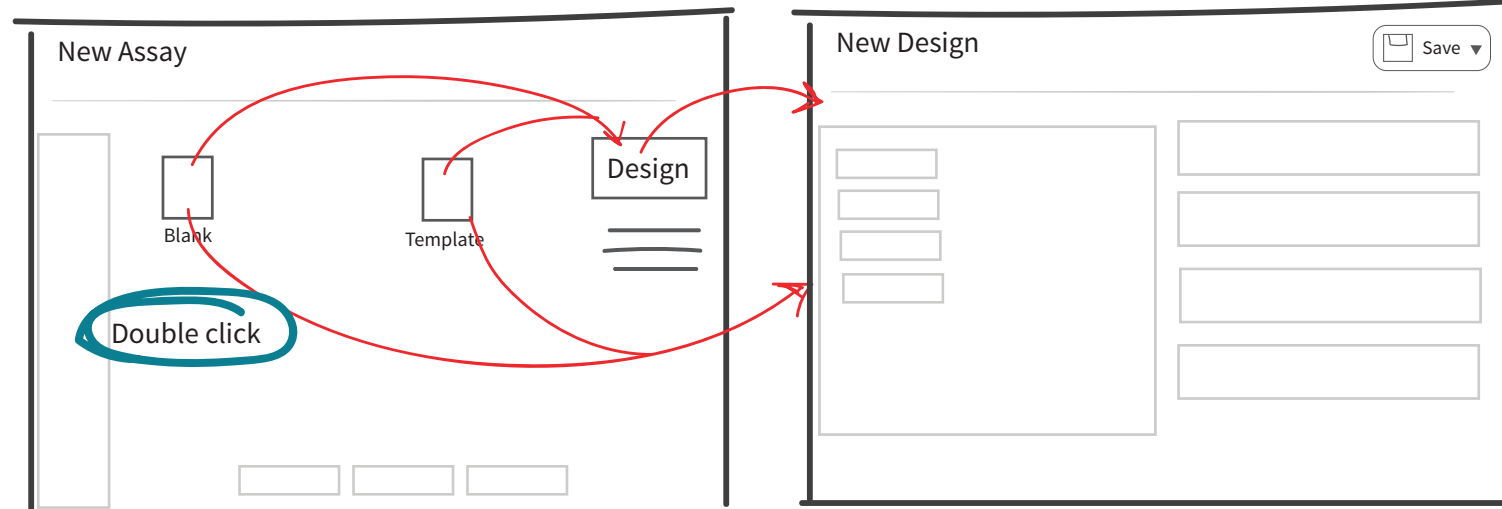
Double clicking Blank creates a New Design file  
Double clicking Template creates a New Design file **?** Unexpected behavior

Selecting Blank and then Pressing the Design button creates a New Design file  
Selecting A Template file and then Pressing the Design button creates a New Design file **without a name?** **?** Unexpected behavior

Design files are created here but found under the Open tab, not stored in Template directory **?** Unexpected behavior

Save button is a drop down that asks the user to save as a Template File or as a Design file

New Assay - 'New' Under Wave Home

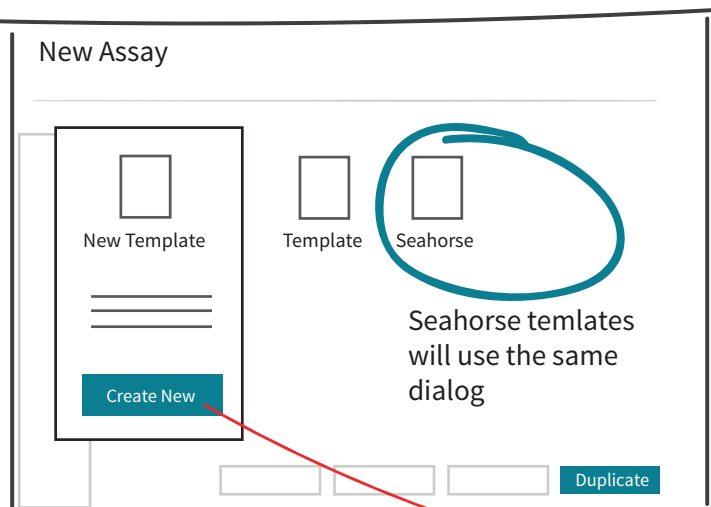


Double clicking a Template opens that Template  
Selecting (on a touchscreen) or hovering with a mouse shows file details and 1 new buttons **Edit Template**

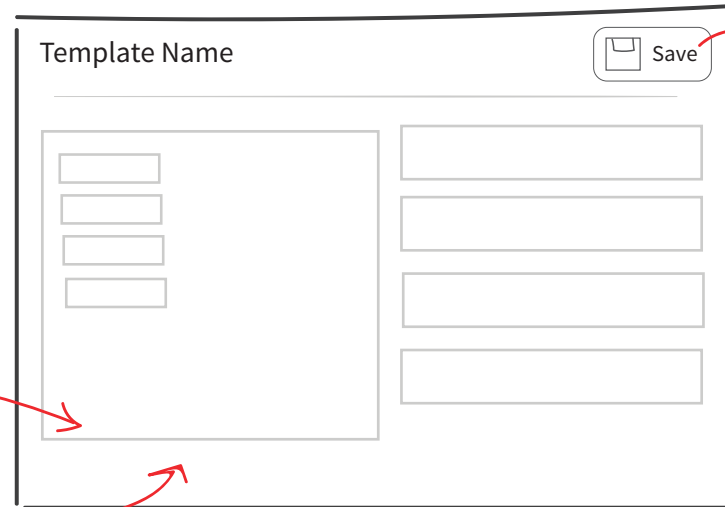
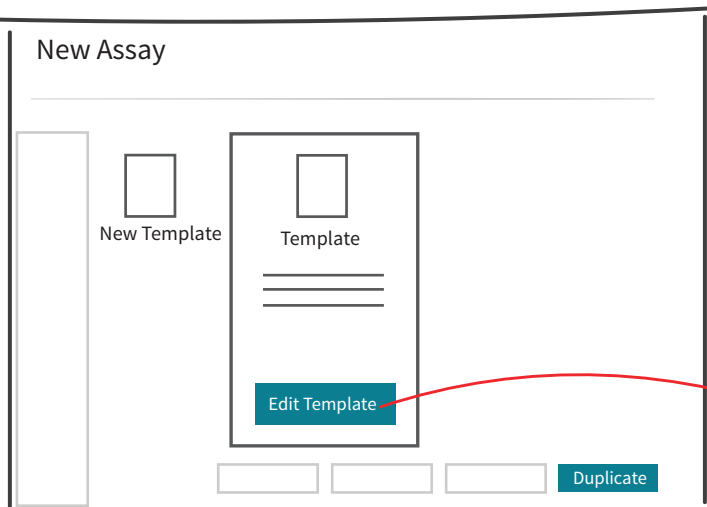
A Duplicate button has also been added, this creates a dialog where the user can rename the file **Duplicate**

Template Files Only Workflow

New Assay - 'New' Under Wave Home



New Assay - 'New' Under Wave Home



In the revised workflow the Save button will save the current Document. It will bring up a dialog that allows the user to rename the document if they desire performing a 'Save As' action.

New Assay - 'New' Under Wave Home

