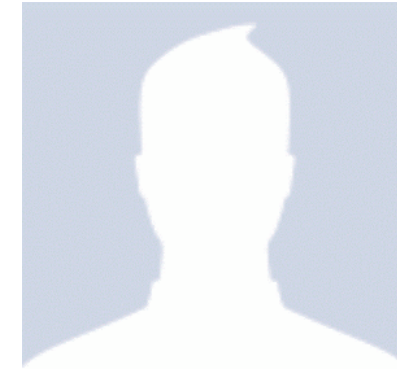


# FIELD RESEARCH



“I would like to see food warmers be more user friendly, with features that will help make the process more sanitary and safe.”

-Ryan (Dinning service Manager)



## POSSIBLE CHANGES

- Cleanliness is the largest problem factor
- Sliding doors make it hard to reach some foods.
- Food spoiling due to temperature problems
- Large bulbs cause burns for users and workers

## POSITIVE FEEDBACK

- Knobs are easy to turn and set
- Large doors are nice for easy access
- Large bulbs keep food warm

