



# S u s t a i n a b l e   O f f i c e

---

A firm engaged in solving environmental challenges in architecture and interior design projects. The entire space was planned and design based on the system of lifecycle by Cradle to Cradle Certification. The use of natural light, acoustical ceiling tiles, carpet tiles made of recycle plastic bottles, open doors and easy flow of circulation, translate energy save, quality of life and sustainability.





Axonomic Legend

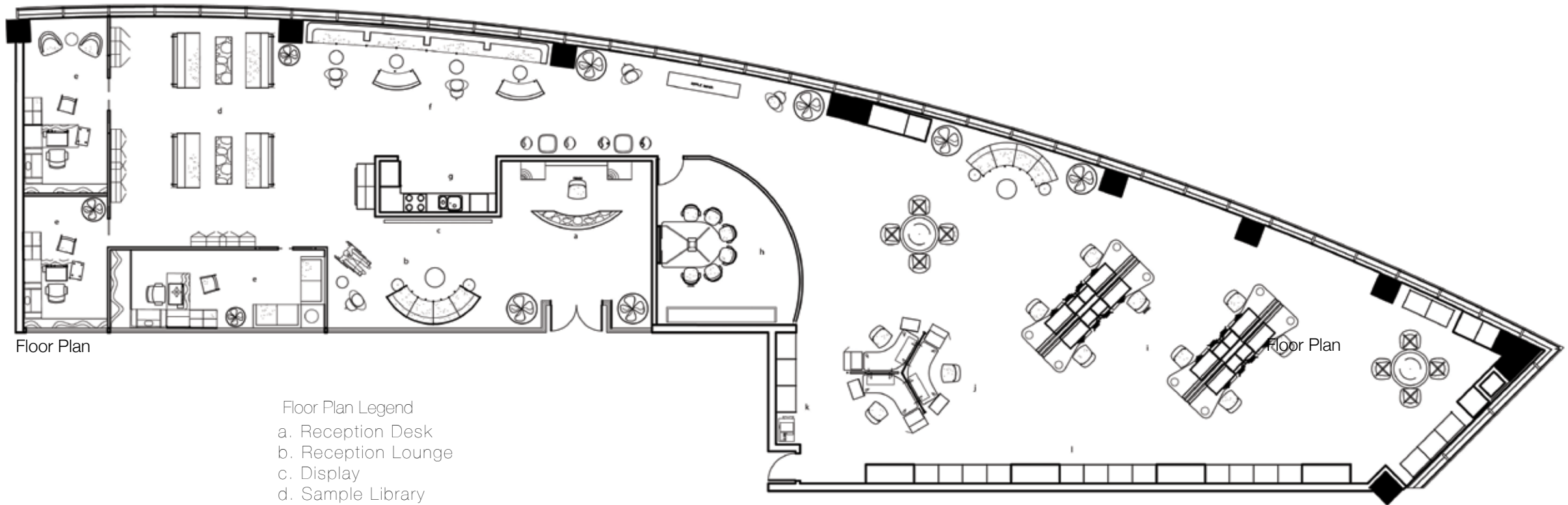
- a. Reception Desk
- b. Reception Lounge
- c. Display
- d. Sample Library
- e. District Manager
- f. Main Corridor
- g. Break Area
- h. Conference Room
- i. Product Consultant
- j. Assistants Support
- k. Copy - Storage
- L. Built In Central Filing



# Sustainable Office

3D Auto Cad - Illustrator





Floor Plan

Floor Plan

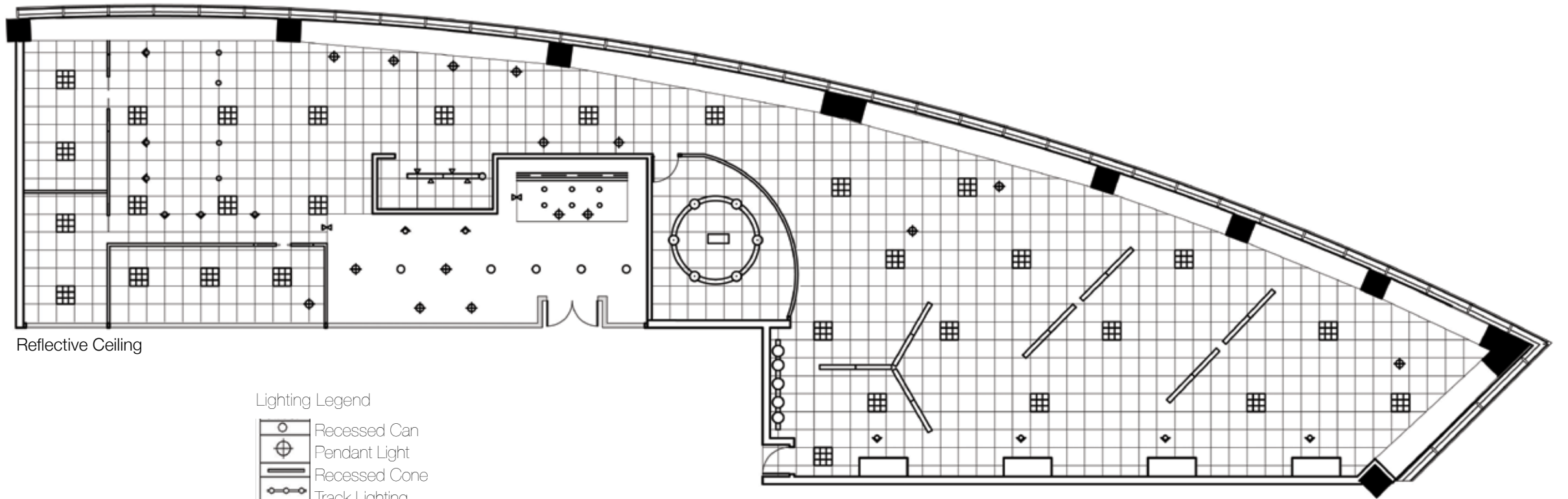
- Floor Plan Legend
- a. Reception Desk
  - b. Reception Lounge
  - c. Display
  - d. Sample Library
  - e. District Manager
  - f. Main Corridor
  - g. Break Area
  - h. Conference Room
  - i. Product Consultant
  - j. Assistants Support
  - k. Copy - Storage
  - L. Built In Central Filing



# Sustainable Office

Auto Cad - Space Planning





Reflective Ceiling

Lighting Legend

-  Recessed Can
-  Pendant Light
-  Recessed Cone
-  Track Lighting
-  Recessed Incandescent WallWasher
-  Recessed Incandescent DownLight
-  Pendant Mounted Fluorescent
-  2'-0"x 2'-0" Fluorescent Light Fixture
-  2'-0"x 2'-0" Acoustical Tile
-  Drywall Ceiling
-  Ceiling Height Change



# Sustainable Office

Auto Cad - Lighting Planning





Perspective View Main Corridor

Sustainable Office

3D Auto Cad - Illustrator - Photoshop





Perspective View Reception



Perspective View Lounge



Sustainable Office

3D Auto Cad - Illustrator - Photoshop



# H e a l t h F o u n d a t i o n

---

A foundation designed for medical research and mental health learning. The interior design reflects the relation between body, mind and soul.





# S e r i m   R e s i d e n c e s

---

Lofts designed for an elegant, glamorous, urban living. Two floors with master bedroom and library on upper floor and gourmet kitchen, living room and powder room on lower floor.



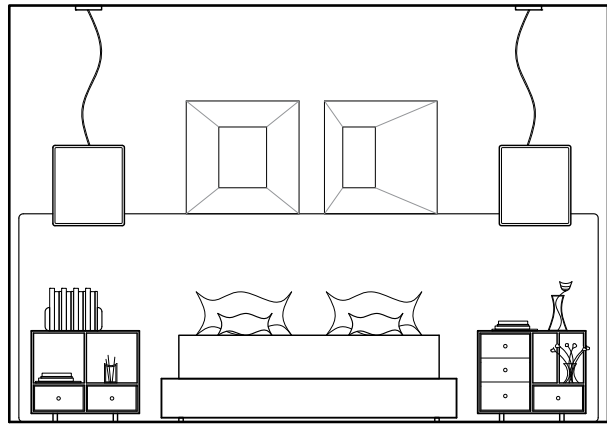


Master Bedroom Perspective View

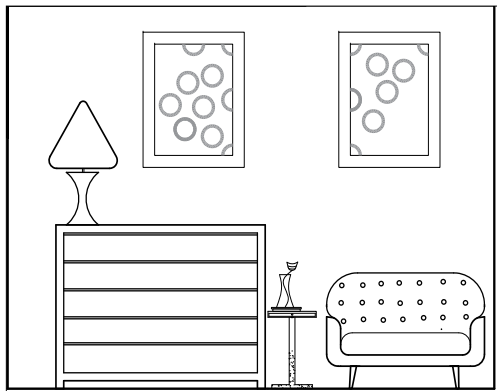
S e r i m R e s i d e n c e s

Auto Cad - Illustrator - Photoshop

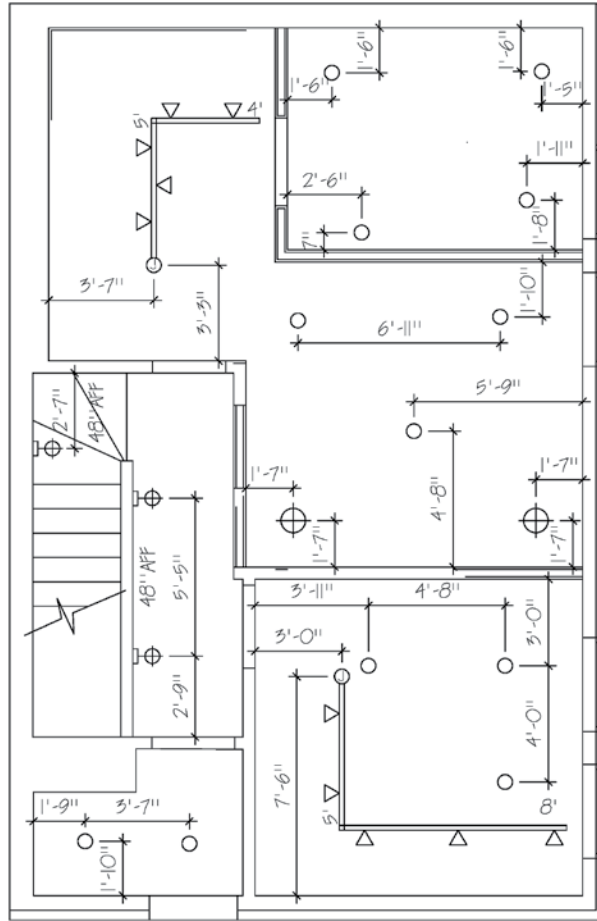




Bedroom Elevation



Reading Area Elevation



Lighting Plan

LIGHTING LEGEND	
SYMBOL	DESCRIPTION
○	RECESSED CAN
⊕	PENDANT LIGHT
⊖	WALL SCONCE
⊖	TRACK FIXTURE
⊖	MONOPOINT

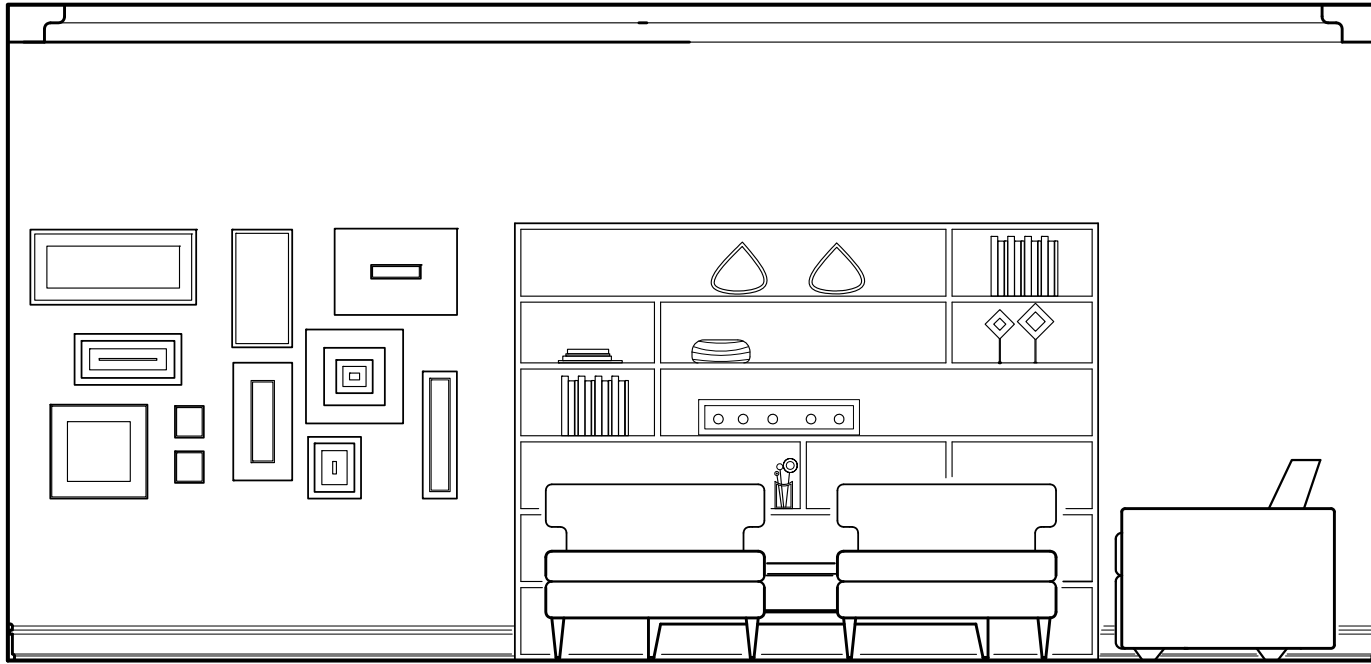


Bedroom and Library Floor Plan

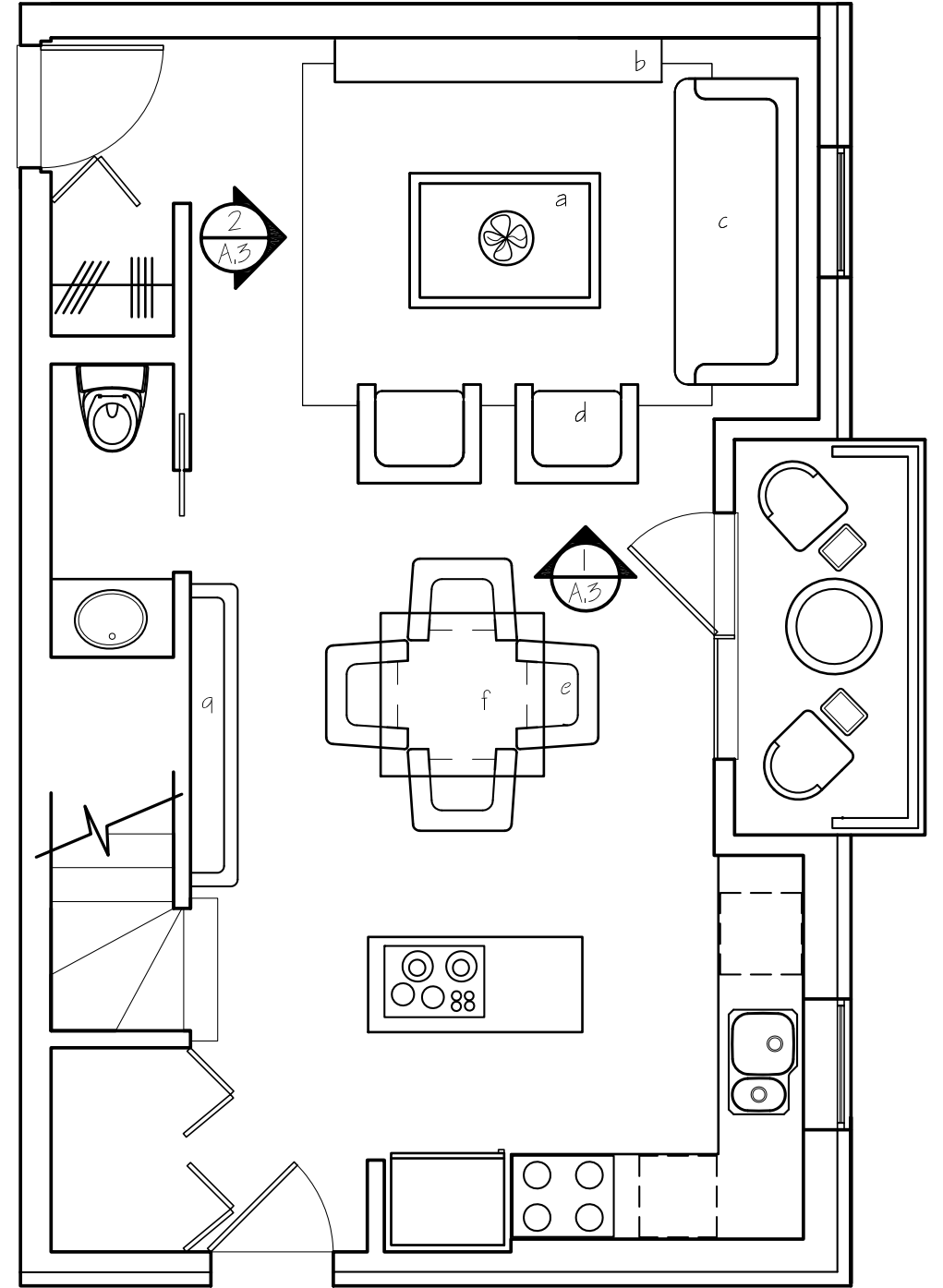
S e r i m R e s i d e n c e s

Auto Cad - Illustrator - Photoshop





Living Room Elevation



Living Room and Kitchen Floor Plan

S e r i m R e s i d e n c e s

Auto Cad - Illustrator - Photoshop



# B r e e z e H o u s e

---

The modular house at the beach, for a homeowners who loves to entertain. Modular house is the result of a custom engineered energy efficiency and factory constructed home.





Floor Plan

- Floor Plan Legend
1. Parking
  2. Doble door entrance
  3. Foyer - stone wall
  4. Free stand counter
  5. Dining Room
  6. One Wall Kitchen
  7. Living room
  8. Fire place - ecofriendly
  9. Slide Window door to Patio
  10. Master bedroom suite with built in bed
  11. Wash and dryer
  12. Office and guest room
  13. Buit in bed/office table
  14. Bedroom Patio
  15. Bedroom Patio

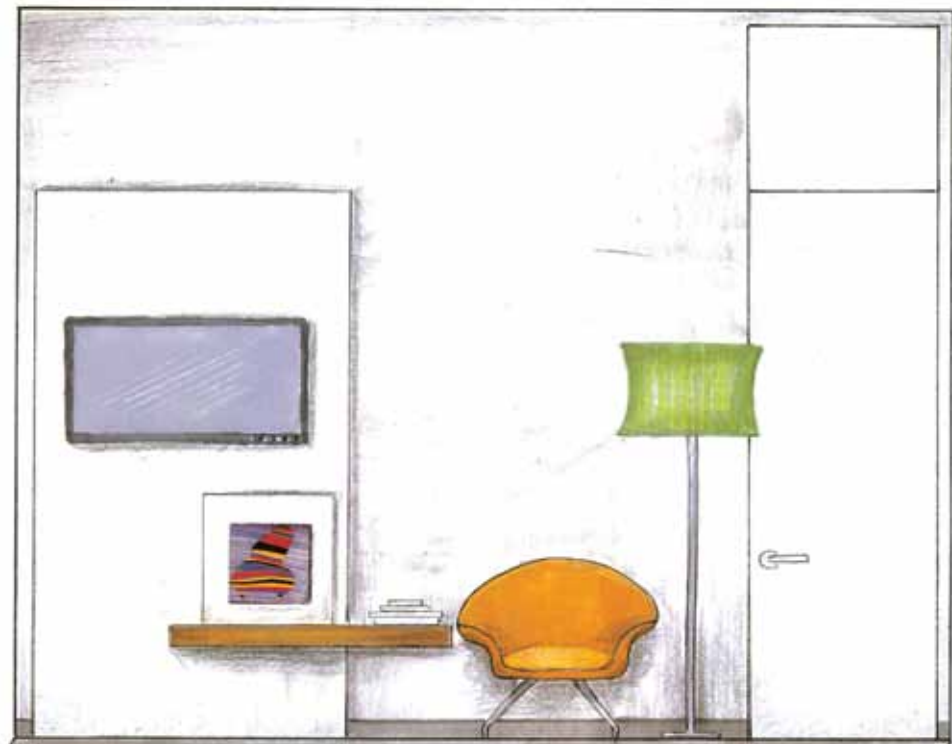
# B r e e z e H o u s e

Hand Rendering





Built-In Bed Elevation



Reading Area Elevation



Textiles Selection



Sketch



Color Inspiration

B r e e z e H o u s e

Hand Rendering





One - Wall - Kitchen was a challenging request from the client. Built-In refrigerator and oven turned on a great solution and interesting design, perfect for entertaining, clean look and modern design.

Kitchen Elevation



Color Studies



B r e e z e H o u s e

Hand Rendering

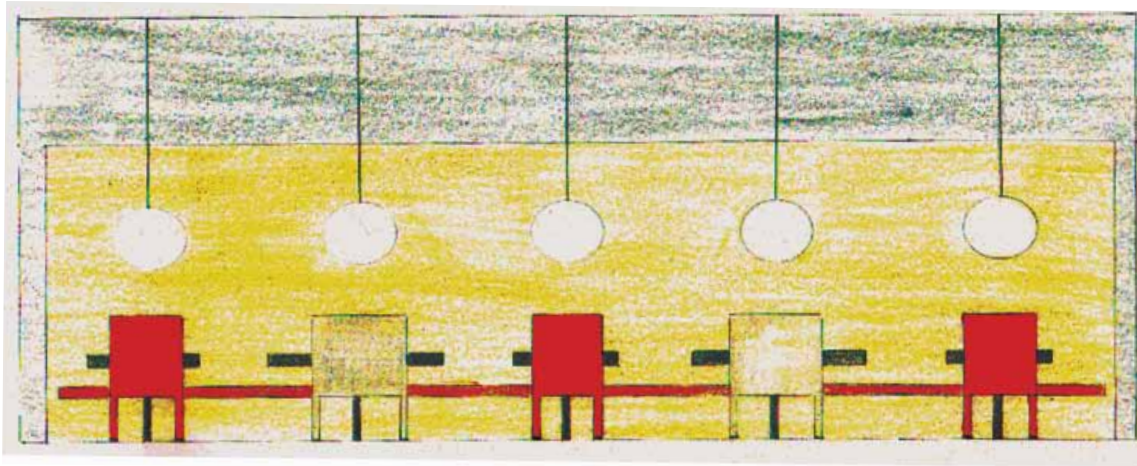


# C a f e D u J o u r

---

A gourmet French pastry shop in the heart of Chicago. Inspired by french coffee shops with a trend and cozy environment. Perfect place to relax, read a book and enjoy a cup of tea delighting luscious macarrons.





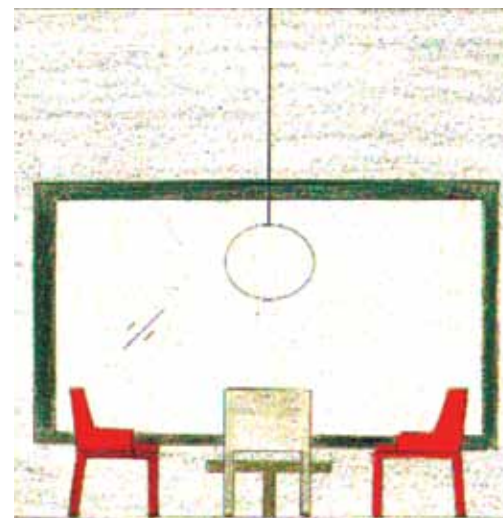
High Back Booth Elevation



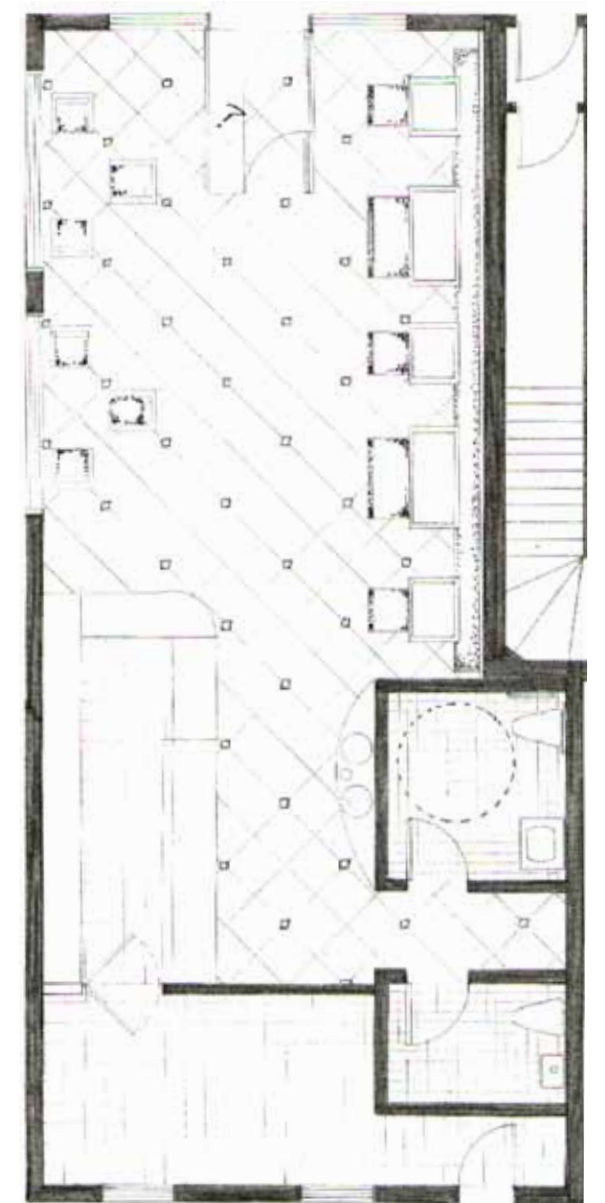
3D Model



3D Model



Front Window Seating Elevation



Floor Plan

1. Doble Door Main Entrance
2. Window Seating Area
3. Hight Back Booth
4. Food Display and Bar Service
5. Storage with doble door to the service area
6. ADA Bathroom
7. Self Service Coffee Stand

# C a f e D u J o u r

3D Model - Hand Rendering

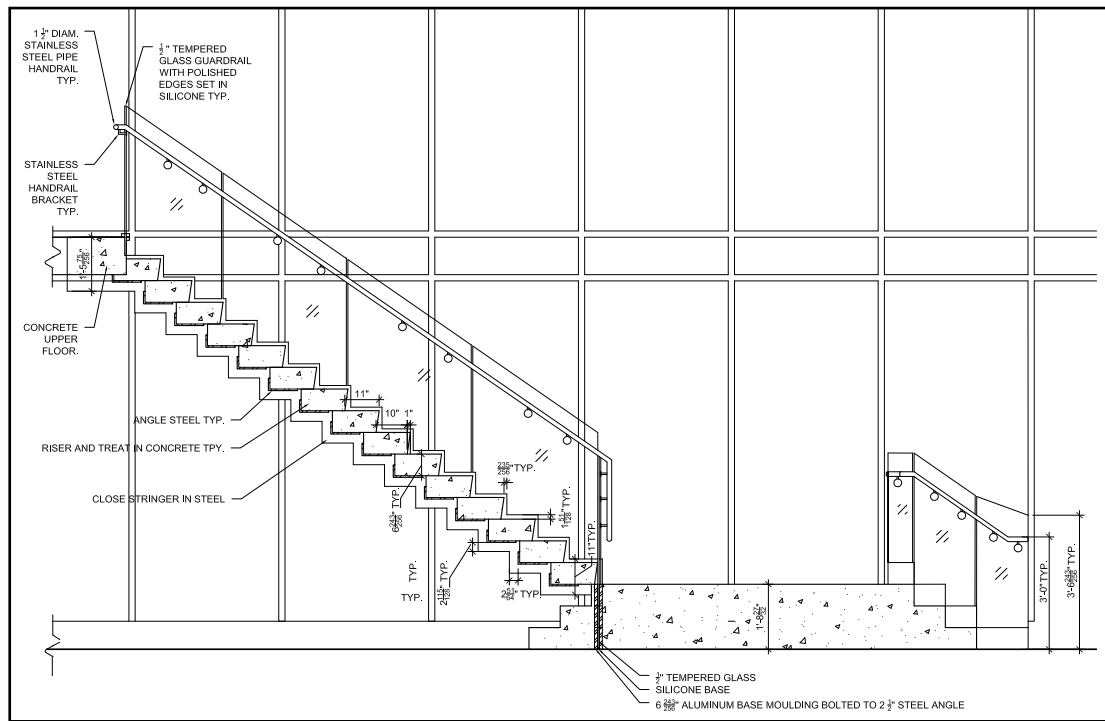


# Stair Case - Hallway

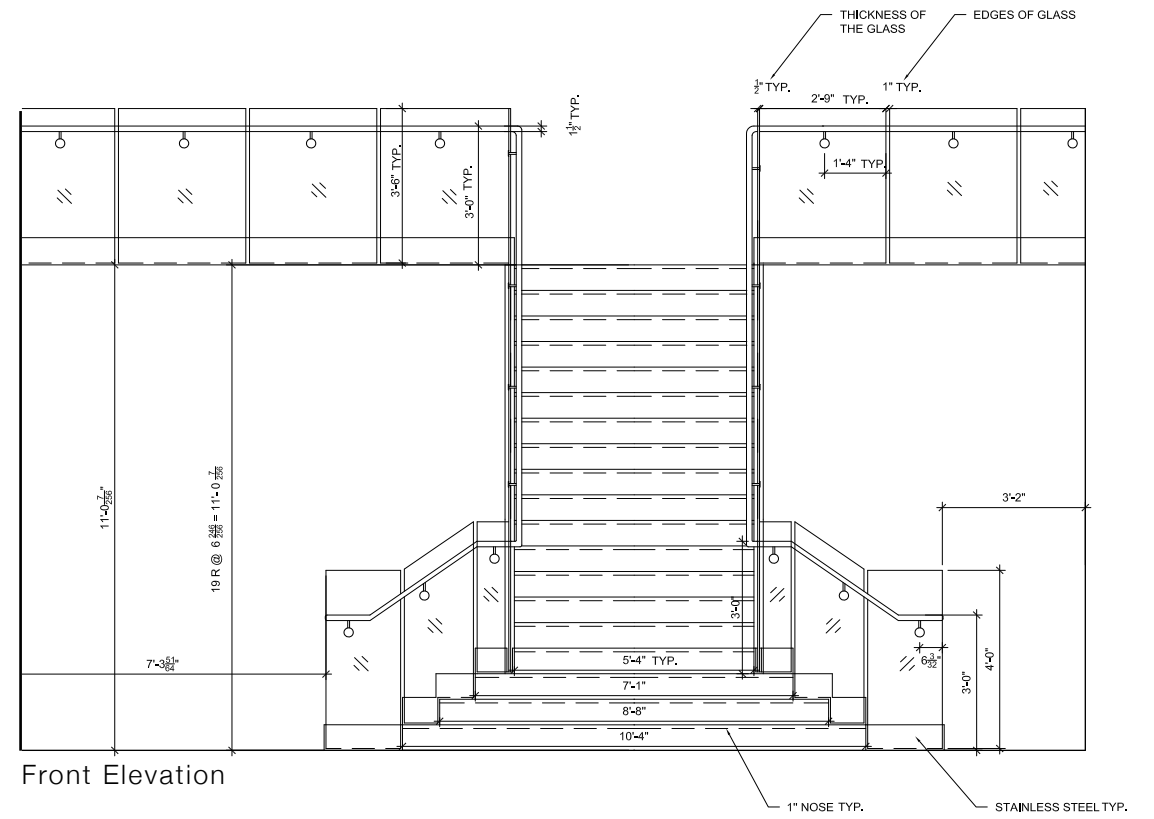
---

Design project for a commercial building hallway Designed for large traffic that moves from one single main entrance directly to the stair.

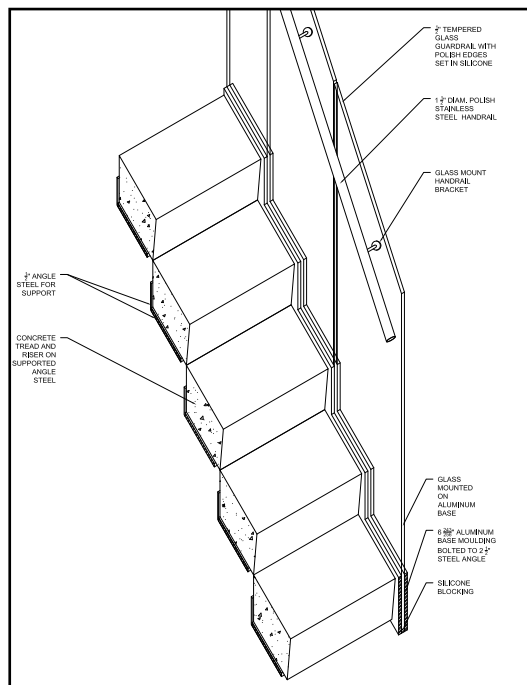




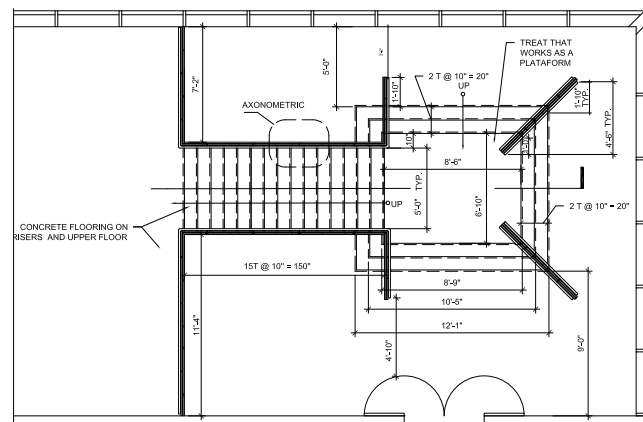
Section



Front Elevation



Axonometric Section



Floor Plan



Inspiration

S t a i r C a s e

Auto Cad

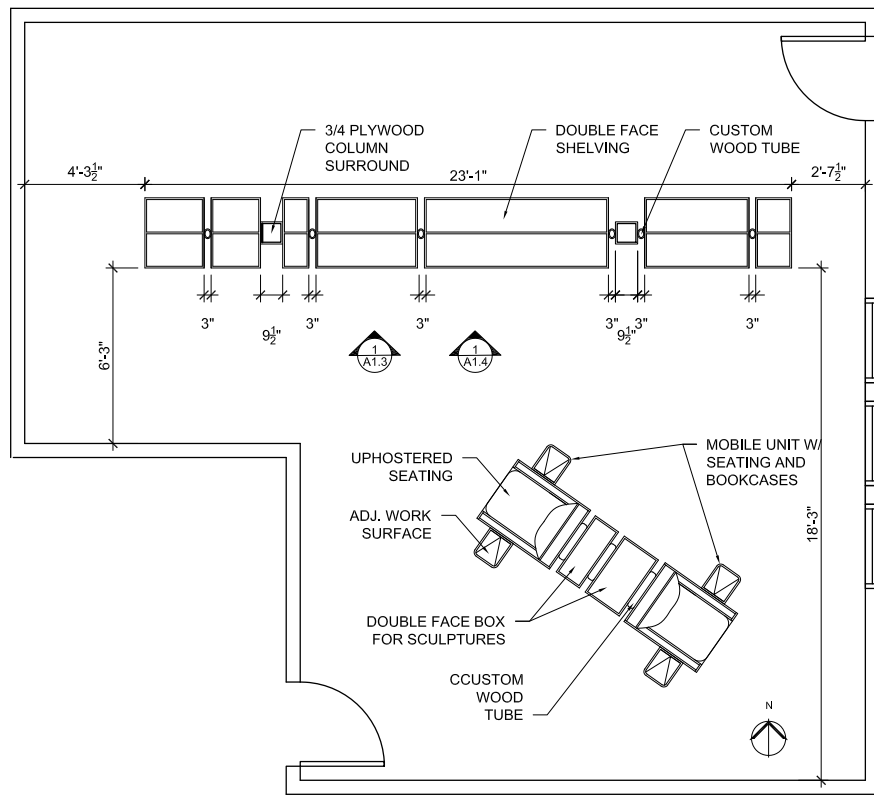


# S u s p e n d e d B o o k C a s e

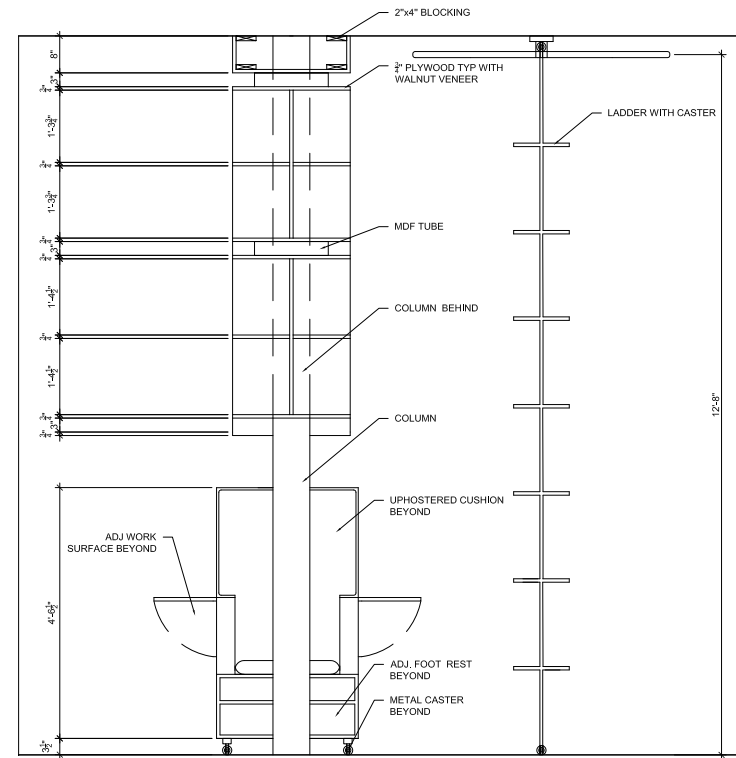
---

Free-stand bookcase with a built-in chair. The design provides 150 linear feet of book storage and the primary structural material is 3/4" plywood.

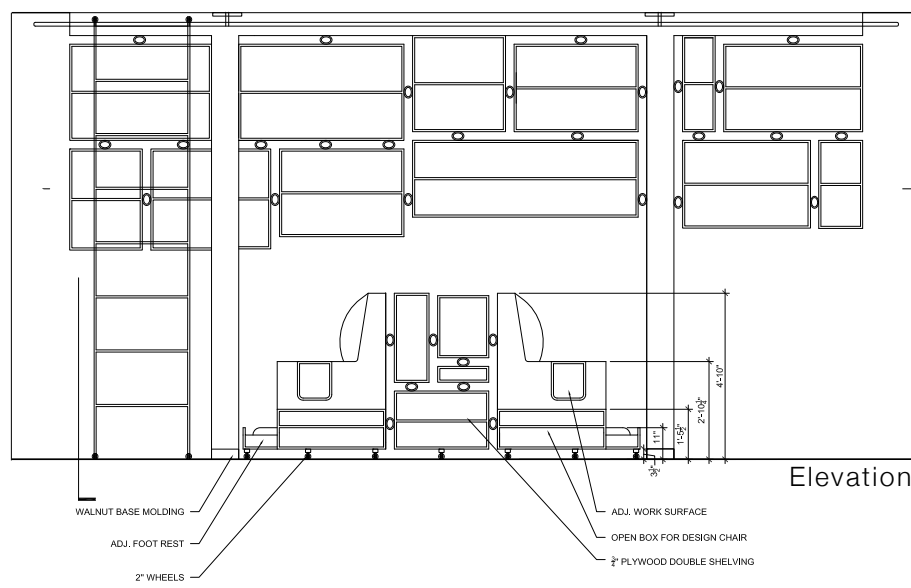




Floor Plan



Section



Elevation



Inspiration

# Suspended Bookcase

Auto Cad

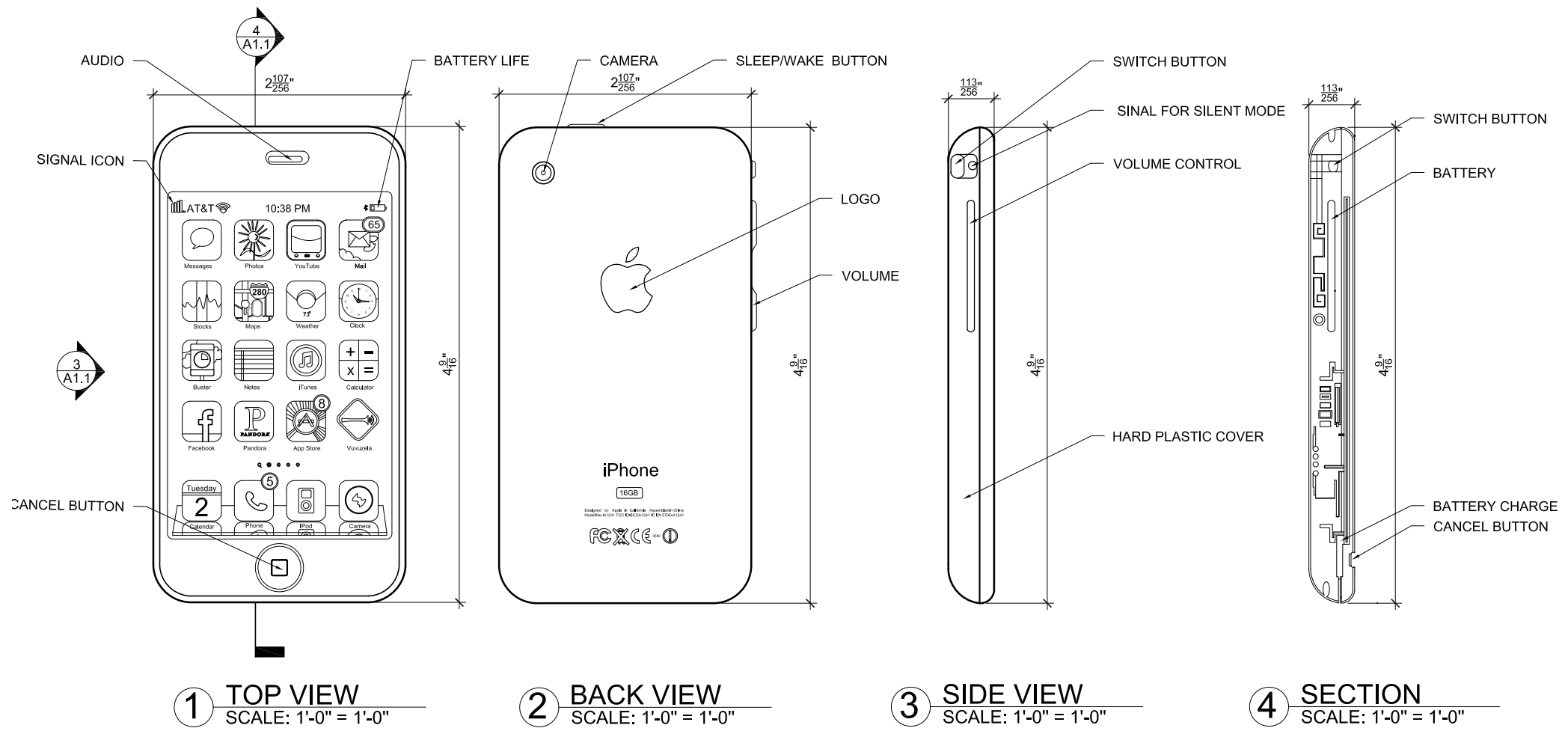


# M o b i l e   D e s i g n

---

Design a mobile with an accuracy of details. The practice of Auto Cad and different types of cuts- section, elevation.





Product Design

Auto Cad



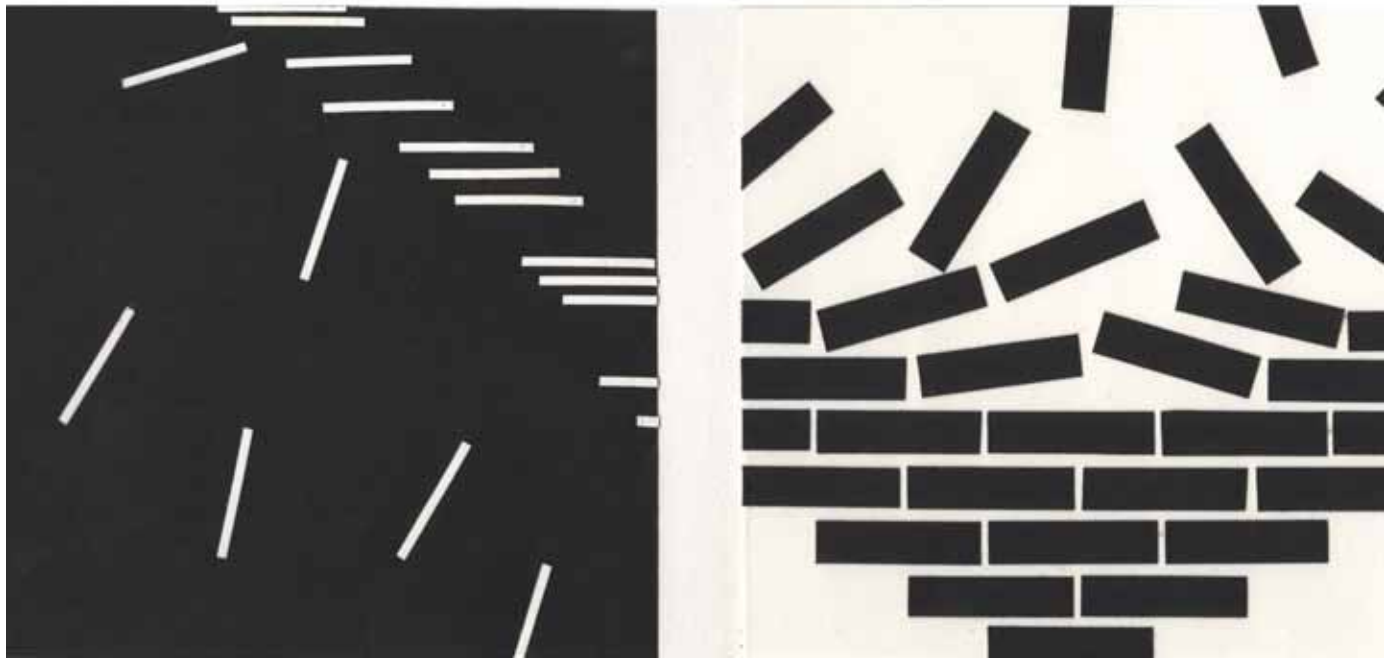
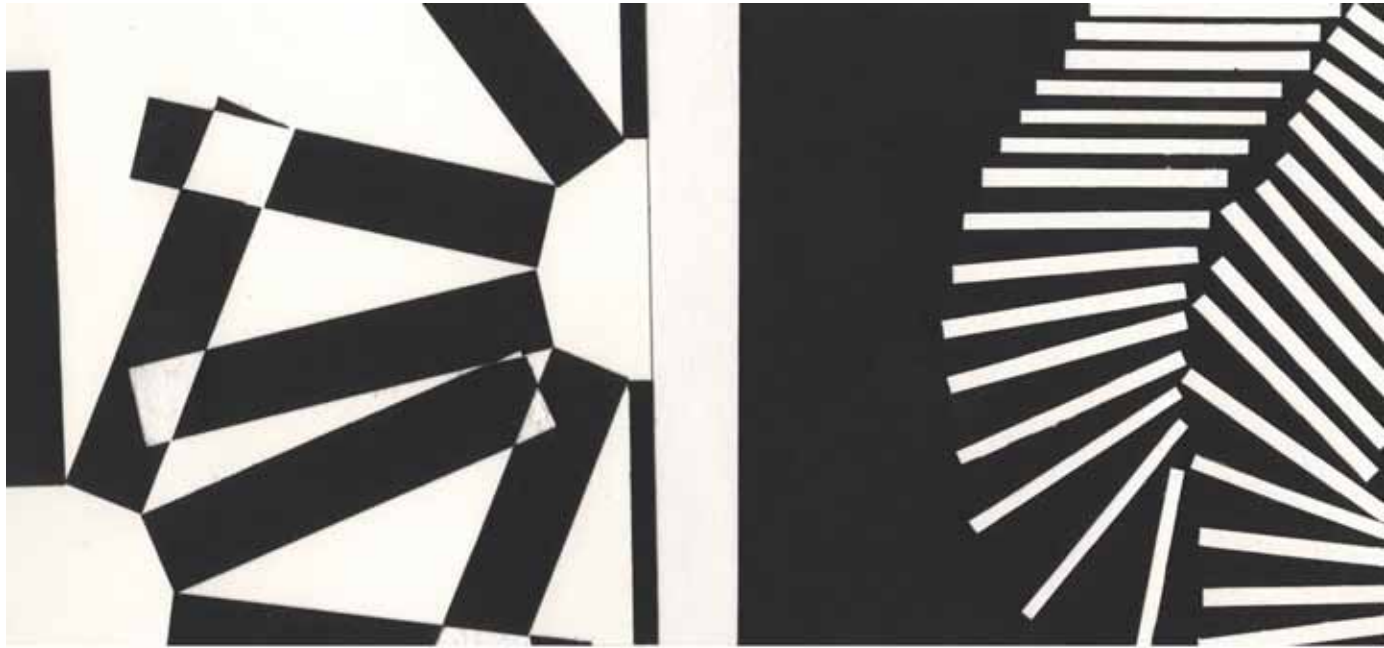
# Art Design

---

Projects done during the school for development of color perception, three dimensioning, perspective, contrast, volume, rhythm, shape, fundamental skills for a good design



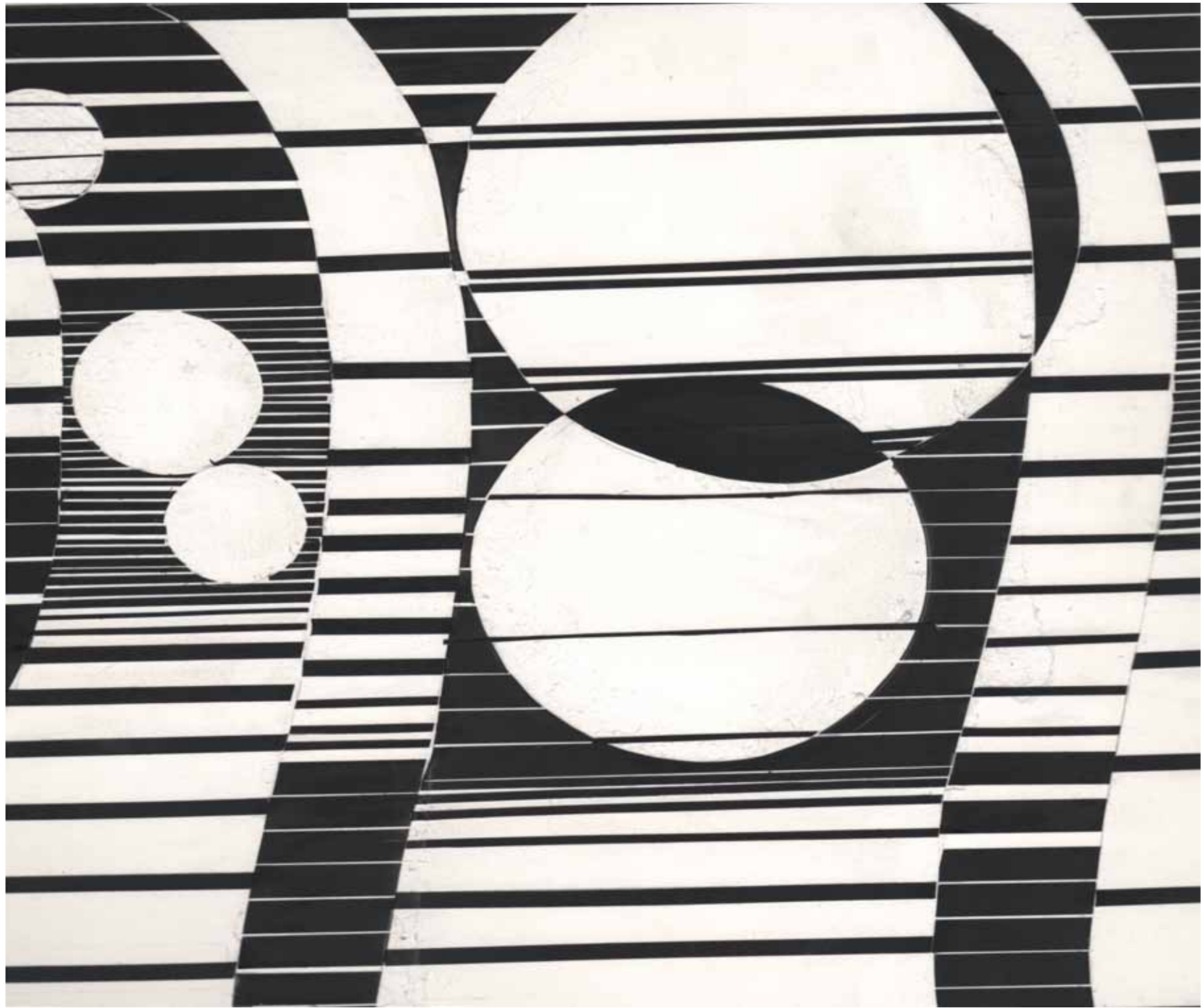




R y t h m   a n d   S h a p e s

Plastic Band





Thank You

---

Ana Paula Nardi Beloto  
Interior Designer

