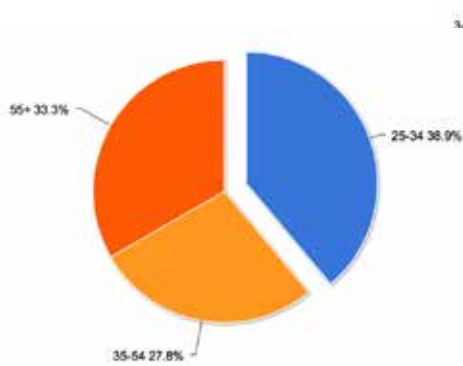


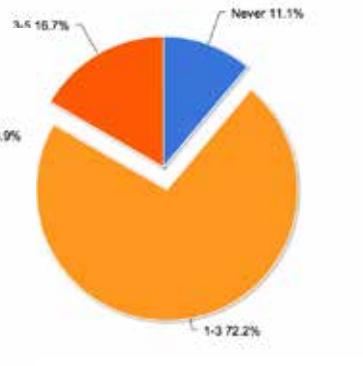
{Research}

Quantitative Analysis

After narrowing down my location, I sent out a survey to the residents of the Warehouse District, This helped me further define my user.



Which of these age groups do you fall under?



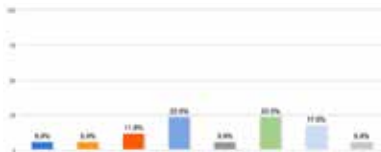
On a weekly basis, how often do you go to outdoor public spaces?



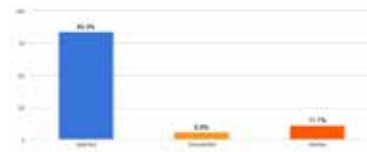
Do you prefer open or enclosed spaces?



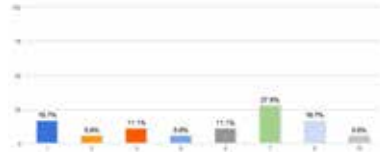
Are you familiar with the location of Cleveland's original lighthouse and witness tree from which the city was surveyed?



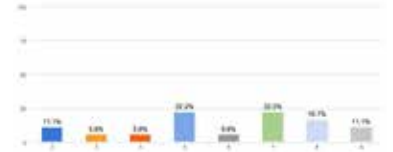
On a scale from one to ten, how well do you know your neighbors?



Over all, are you satisfied with your living experience in this neighborhood, neither satisfied nor dissatisfied with it, or dissatisfied with it?



On a scale from one to ten, how often do you attend events held in your neighborhood?



On a scale from one to ten, how strong is the sense of community in your neighborhood?