



BLUE RIDGE AREA FOOD BANK | 2010–2011 Annual Report





BLUE RIDGE AREA

FOOD BANK

2010–2011 Annual Report

Nourishing Hope for **30 Years**



This year, the Blue Ridge Area Food Bank marks 30 years of service to the community. Like most food banks, we began with a simple idea: rescue food that would otherwise go to waste, and distribute it to people in need. We started in a small building in Staunton, and in just one year, provided more than 500,000 pounds of food to hungry neighbors through a handful of community partners.

Much has changed since then. We have grown to serve hungry people across a third of Virginia through distribution centers in Winchester, Verona, Charlottesville and Lynchburg. At the end of the 2010-11 fiscal year, we distributed 20.9 million pounds of food—the equivalent of 16 million meals—through partner food pantries, soup kitchens and shelters, who in turn served an average of 103,000 people each month.

As you will see in a timeline of milestones in hunger relief later in this report, the work we do has become all the more critical in recent years. The recession, job losses and underemployment have thrust record numbers of people into poverty. We are now providing twice as much food to twice as many people as we were before the downturn began.

None of this, of course, would be possible without the dedication of our 307 community partners and their countless volunteers who work tirelessly to ensure that their neighbors have enough food to eat. Housed mostly in churches and community centers, these food pantries, soup kitchens and shelters have stretched often beyond capacity to meet the soaring need for food assistance in their communities.

Likewise, we would be powerless against the rising tide of hunger without the loyalty and dedication of our generous donors. For 30 years, our donors have sustained our programs and enabled us to grow when the community needed our help. We deeply appreciate all who have shared the abundance in their lives with those who have at times been unable to provide for themselves.

With gratitude,

A handwritten signature in blue ink that reads "Larry Zippin". The signature is fluid and cursive, written in a professional but personal style.

Lawrence M. Zippin
Chief Executive Officer

Changing Lives with **Your Support**

How much does hope weigh?

At the Food Bank, we first measure our success by the number of pounds of food we distribute to people in need. And yet, when we talk to families—to parents, grandparents and even to children—we find that the most important difference we make is much less tangible. It's the comfort an elderly man feels when the volunteer arrives at his home with a box of groceries for the week. It's the warm relief a mother feels knowing her children won't go to bed hungry. And it's the renewed faith an unemployed father gathers from the empathy and generosity of his neighbors. Most of all, it is hope.

The full measure of what we achieve together can really be found in the stories of the people we serve. Whether dealing with illness or disability, unemployment or other financial setbacks, those seeking our help express a humbling sense of gratitude for what they have, and faith that their circumstances will improve.

I hope you will take a moment to read a few of their stories in this report, and appreciate, as I do, the changes you are making in their lives through your support and involvement with the Blue Ridge Area Food Bank.

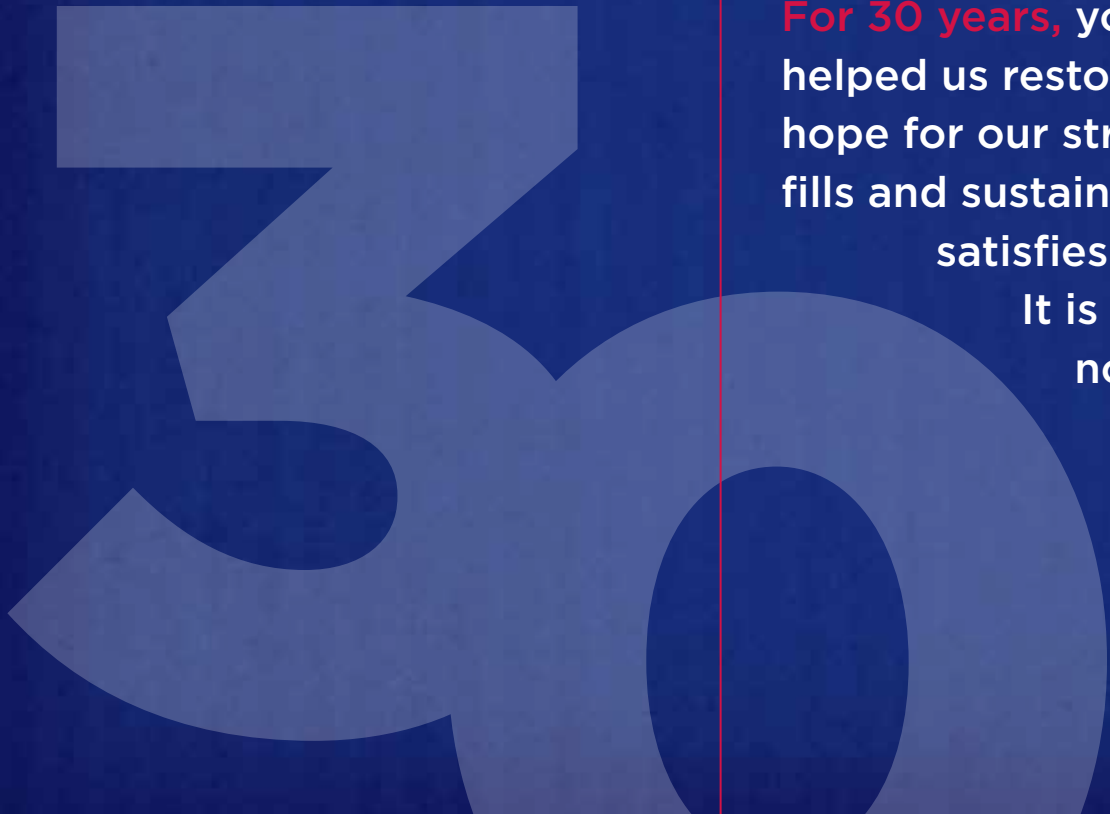
Thank you!



Susan Myers
Chairperson, Board of Directors



STORIES *of* HOPE



For 30 years, you've enriched thousands of lives and helped us restore options, sustain life and provide hope for our struggling neighbors. Food, at its least, fills and sustains. At its best, it nurtures and deeply satisfies. Food is life. It is energy. It is health. It is strength. Most importantly, it delivers nourishment to every fiber of our being.

These are a few stories of survival and hope thanks to you.

I'm a SURVIVOR



Stories of Hope
WINCHESTER

All 60 years of her life, Patricia Ratlief has lived in the same two-story home in downtown Winchester. A row house, just around the corner from the childhood home of the late country singer Patsy Cline.

The house used to be filled with the hustle and bustle of her five siblings. Now, Patricia lives alone. She decorates the house for each season, and on this particular day, the home is adorned for the Easter holiday. Colorful paper rabbits lined the walls from the dining room to the kitchen cabinets, and pastel paper Easter baskets dangled from the ceiling.

She is a woman of strong faith and exudes joy. Considering her story, one might wonder what makes her happy. Patricia would tell you, “the Lord.” Life has been far from easy. Her closest family members—her mother, father and aunt—all passed away in three consecutive years. She was nearly 30 years old when they died and didn’t have a job because she had been their primary caretaker throughout their illnesses.

“When my mom passed away I experienced a time when I didn’t have much food at all. At that time I was looking and looking for a job, and just couldn’t get one. I think I lost about 75 to 100 pounds back then... I would go for days at a time without eating.”

Patricia looked down with a somber expression as she recalled the events of 30 years past.

When she had nothing to eat, Patricia mixed flour with water or milk to make pancakes. This went on for a couple of months before she finally found a job at a Winchester hospital as a cafeteria aide.

“It could have been worse, but I was thankful for any job I could find.”

Today, Patricia suffers from severe arthritis, making it difficult for her to

walk. Because of her condition she gave up her job.

Despite several surgeries to alleviate the pain, it has returned. She relies on a disability check to get by. It usually pays the bills, but there’s little money left for food.

So, she depends on the Blue Ridge Area Food Bank and the food pantry at Calvary Pentecostal Church of God to provide her with a box full of sustenance each month.

“The Food Bank is really a blessing. I don’t know what I would do without it,” she said. “I always remember there are a lot more people worse off than me.”

She was one of those people 30 years ago. These days, she’s humbly grateful for relief and comfort during her time of need.



**I didn't have
much food at all...
I would go for
days at a time
without eating.**



No Longer **FORGOTTEN**



Stories of Hope
LYNCHBURG

One word defines the atmosphere of *The Virginian*: Forgotten. The dirty and scuffed gray floors. The old, creaky elevator. The gloomy walls. All forgotten.

Since being converted to government-subsidized housing, The Virginian, a timeworn hotel in downtown Lynchburg, has become home to hundreds of low-income families like Mark and Patricia Beely.

Marc and Patricia know what it's like to be forgotten. That is, until now. Since visiting the Lighthouse Community Center in Lynchburg last year, they've experienced unconditional love. Martha Brown, the Center's food pantry director, along with a dedicated group of volunteers, has been looking after the couple since they met at the Center's community Thanksgiving dinner in 2010.

The Beelys are a young couple living with serious medical issues. Marc, 34, recently had a benign brain tumor removed. Patricia, 26, has cerebral palsy. In their short lives, Patricia and Marc have experienced a considerable amount of adversity, living on the streets for several months before coming to Lynchburg.

Today, they're thankful for shelter, although uncomfortable. The apartment is cramped and not handicapped accessible for Patricia, who relies on a wheelchair. She cannot fully enter the tiny, 3x5 kitchenette or the equally small bathroom. The dining table is just a few feet from the front door and a short distance from a thin, twin-sized, mattress on the floor serving as a couch. It used to be their bed until the Lighthouse Community Center gave them a full-sized mattress.

The pair met and married in Oklahoma City, Patricia's hometown. Together, they made their way across the Midwest, from Oklahoma City, to El Paso, to Las Vegas, as Marc searched for a job. It was during that time that they became homeless. It was a terrifying experience, Patricia recalled, especially in her condition.

"I was scared to go to sleep. There were people walking throughout the night and I didn't know..." her voice trailed off as she thought about what could have happened. "They could just

come up to you out of nowhere and do anything to you."

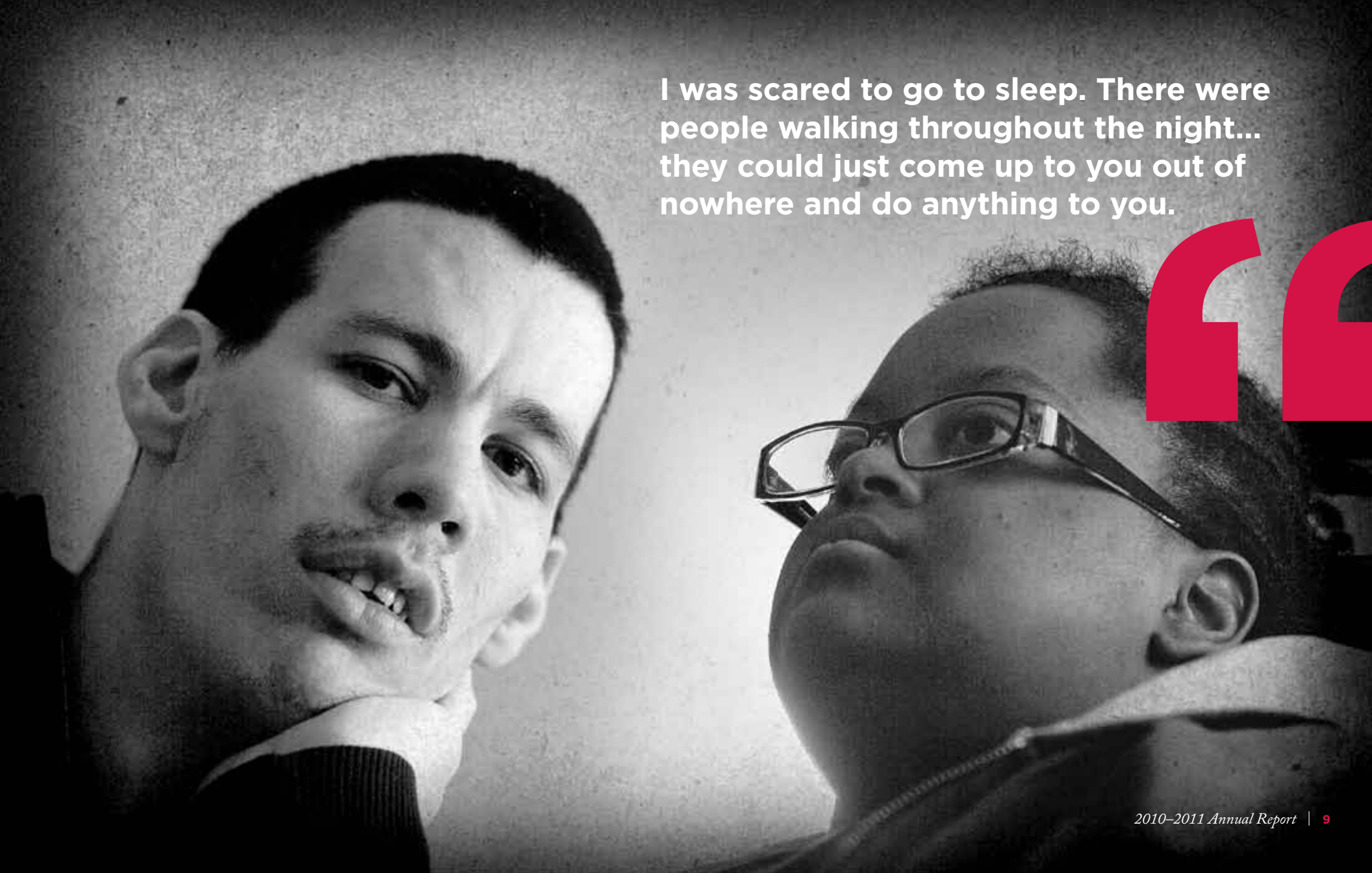
After two months on the streets, they came to Lynchburg, where Patricia's father lives. That's where they met Martha and the compassionate team of people at Lighthouse. Patricia can't help but smile when talking about her.

"Martha came just in the nick of time," she said.

The Lighthouse Community Center responded to their immediate needs at a time when they were helpless. When Marc learned that he had a brain tumor, Martha and the volunteers were there from start to finish—from the hospital, to doing laundry, cleaning, and cooking when he came home to recuperate.

Most meaningful, however, is Martha's genuine friendship.

"I'm a very shy person when it comes to meeting people," Patricia said. "It makes me feel better sharing my story (with Martha). I've been through a lot... You know, I've come through the obstacles."

A black and white photograph of two men looking upwards. The man on the left is in the foreground, looking directly at the camera with a slight, unsettling smile. The man on the right is in the background, looking upwards with a concerned expression. The background is a textured, mottled grey.

I was scared to go to sleep. There were people walking throughout the night... they could just come up to you out of nowhere and do anything to you.

LOVE & FAITH



Stories of Hope
THE VALLEY

Jen and Herb Jones are the first to admit that they've had a decent life. Five beautiful children between them, a rental home in Weyers Cave, and two cars. But over the past two years, life has taken some unexpected and difficult turns for these young Army veterans.

They met in Kosovo, where they were serving their country in the Army National Guard. Both were discharged as a result of medical issues and settled into government contract jobs.

"Things were going great!" Jen exclaimed. "I was making \$21 an hour and Herb had a great job. He was making like \$20 bucks an hour. We loved it."

She and Herb sat at their roomy dining table with Jen's two girls, Natalie and Hannah, who were quietly doodling and playing by their side. Her son, Tucker, was engrossed in a game of his own on the living room couch. Herb's two sons live in Roanoke with their mother, but they come to stay with him every weekend.

In the summer of 2010, Jen lost her job. It was a devastating blow,

especially with children to support. Then, Herb lost his job.

For about a month and a half, both of them were out of work together until Jen found another government contract job in Charlottesville. However, the damage to their finances had already been done. Herb has continued a diligent job search, but in the meantime, they've struggled on one income, defaulting on the electric bill to buy propane for heat and cooking during the cold months. It's not cheap. The family uses nearly \$400 worth of propane in less than two weeks.

Food assistance has become vital to their survival. The children receive reduced-price lunches at school, which helps enormously, Jen said. And she began visiting the Verona Community

Food Pantry until their church, Bethany United Methodist, opened a food pantry about a year ago.

Both Herb and Jen agree that the glue holding them together is love and faith.

"We have our faith in God and we try to raise our kids in church," Herb said.

Herb recently became more involved with the food pantry at church as a volunteer, picking up and delivering food for others when he can.

"When I'm there, I talk to people, carry the boxes out to the car and stuff like that. I'm just trying to give back a little any way I can," he said.

"We're really thankful," Jen added. "I will be glad when we can give to the food pantry more than we need. I'm waiting for that day."



**I will be glad when we can give
to the food pantry more than we
need. I'm waiting for that day.**

GIVING + *receiving*



Stories of Hope
CHARLOTTESVILLE

Barbara Lee has always made a way for herself through hard work. At 59, she's working hard as ever with people who have intellectual disabilities as a full-time employee for a human services agency.

A divorced, single mother of two grown daughters, Barbara is soft-spoken and good natured with steely determination. She has tirelessly chased her goals, and takes pride in setting an example for her daughters to follow.

Barbara worked for the University of Virginia for more than two decades—most recently as the head of the University's heating and cooling department. She fell in love with the work and dreams of one day being self-employed with her own heating and cooling business.

She is determined that it won't remain a dream, pursuing her Bachelor's in Business Administration

and taking online courses at DeVry University. She'll graduate next year.

"You're never too old to learn," she said.

In spite of her successes, Barbara hit a rough patch a few years ago. It became a struggle to pay the bills and buy food for her household, especially when her grandchildren were in her care. So, Barbara began visiting the food pantry at Holy Comforter Catholic Church and the food filled a great need.

Although she hasn't received a pay raise in four years, Barbara said she's in a better financial position now and has scaled back her visits to the food pantry to about once every three months.

"If I don't need it, I don't get it. It's something that I know a lot of other people need," she said.

Barbara is seeing many of those people every week. Recently, she turned her attention to helping others in need. Barbara volunteers at Holy Comforter's soup kitchen every Thursday. She doesn't get a paycheck, but said the reward is in the smiles of those she's helped.

"It's not money," she said. "Just to see somebody with a family... kids come through and they smile. These people are so happy and thank God when they come in. I've gotten a lot out of volunteering at the soup kitchen. It makes me appreciate things more."



I appreciate
things more.

WAITING FOR THE RECOVERY

The sound we heard loudest of all throughout the 2010–2011 fiscal year was the clock ticking on the economic recovery. Unemployment rates dipped slightly then climbed back up. Real unemployment held at just above 16% of the workforce. Gas and food prices soared and the housing market double-dipped.





And all of this bad news could be seen in the steady rise of people seeking emergency food assistance: We provided food to an average of 103,000 people each month, up 11% from last year.

We also increased the amount of food we distributed by 15%, a real challenge given that food donations from manufacturers declined sharply as companies became much more efficient and produced less excess inventory. Fortunately, through the generosity of

our donors, we were able to make up the difference with contributions from local retailers and with food we purchased.

Another bit of good news: We increased the amount of fresh produce we distributed by 80%, an accomplishment made possible largely by local grocery stores and by our new Mobile Food Pantry. Many rural food pantries lack the cold storage to handle produce and other perishable foods. With the mobile pantry, we get around this problem by bringing fresh food directly to people in remote, underserved areas.

Following are highlights from 2010–2011:



MOBILE FOOD PANTRY DELIVERS

In January 2011, the Food Bank launched the Mobile Food Pantry to reach rural areas in Albemarle, Buckingham and Nelson Counties. With volunteers from local churches and community groups, the mobile pantry served an average of 1,400 families each month from January through June. In all, we distributed 300,000 pounds of food, enough for 230,000 meals, to people living in remote areas with little access to perishable food. Thank you to the Charlottesville Area Community Foundation, the Perry Foundation, Better Living, the MLG Foundation, Bio-Cat, Charlottesville Rotary Club, the Bama Works Fund and an anonymous donor for getting the mobile pantry on the road. And thank you to our partner organizations, Maysville Presbyterian Church, Jefferson Area Board for Aging, and Scottsville Bread of Life Ministry, and their dedicated volunteers who make each distribution a reality.

FOOD DISTRIBUTION	JULY 2009 – JUNE 2010	JULY 2010 – JUNE 2011
Average number of people served each month	92,064	103,000
Amount of Food Distributed	18.1 MILLION POUNDS	20.9 MILLION POUNDS
	13.9 MILLION MEALS	16.1 MILLION MEALS
Fresh Produce Distributed	1.6 MILLION POUNDS	2.9 MILLION POUNDS

Through the Food Bank's Outreach Programs, food is carried directly from our branches to the people who need it most. In all, we operate six outreach programs: Four focus on children and two others focus on families and seniors.

Operation Angel Food provides healthy take home snacks for pre-schoolers.

The Backpack Program provides at-risk elementary school children with enough food for the weekend and school holidays throughout the school year.

Kids Cafe and Kids CanTeen provide nutritious snacks and meals for at-risk children enrolled in afterschool programs.

Super Pantry/Families, Food & Fun is a four-week course instructing needy families in food preparation, basic budgeting, food safety and other life skills. Participants follow recipes, prepare meals and take home a box of food supplied by the Food Bank.

REACH is an all-volunteer program that delivers boxes of food to homebound seniors and people with disabilities.



OUTREACH PROGRAMS
Average Month's Participation

JULY - JUNE
2009 - 2010

JULY - JUNE
2010 - 2011

Children Served through
After School Programs

6,701

7,594

Seniors Served through
the REACH Program

390

453

Families Participating
in Super Pantry

1,084

792



MILESTONES *in*

HUNGER RELIEF

From the War on Poverty to the Great Recession, the last several decades have brought transformative changes and challenges to hunger relief in America. How far have we come? Take a stroll through years of progress and find out.

MILESTONES IN HUNGER RELIEF

1960s

THE WAR ON POVERTY

Times were turbulent and tough. The national poverty rate topped 20% and the U.S. was in the midst of the country's most devastating war and the pivotal Civil Rights Movement. After the assassination of President John F. Kennedy, successor Lyndon B. Johnson continued Kennedy's programs and policies to combat poverty.

1964: President Johnson introduced the "War on Poverty," legislation aimed at cutting the nation's steep poverty rate. Congress passed the Food Stamp Act, now the largest domestic food assistance initiative supported by the federal government.

1966: The Child Nutrition Act of 1966 established the School Breakfast Program, the second school meal program funded by the federal government. The first was established in 1946, when President Harry S. Truman signed legislation establishing the National School Lunch Program.

1967: The nation's first food bank opened in Phoenix, AZ. John Van Hengel, a soup kitchen volunteer at St. Vincent de Paul, noticed that edible but unmarketable food was being thrown out at local grocery stores. He persuaded them to give the goods to the soup kitchen, and donations poured in. Soon, a local church gave him an abandoned bakery to use as a warehouse. In the opening year, Van Hengel and a handful of volunteers distributed a remarkable 250,000 pounds of food through 36 charities.



John Van Hengel

1968–1975: The Summer Food Service Program was formed to provide meals to children during summer break. Today, the Food Bank sponsors and feeds thousands of children each year in partnership with summer activity programs run by recreation centers, churches and other organizations.

1970s

GRASSROOTS RELIEF GROWS

The poverty rate dropped to 9%, a post-war low, but the need for food assistance continued to rise.

1974: Participation in the Food Stamp program increased to 15 million people and new food banks popped up across the country as word of the concept spread.

1976: John Van Hengel received federal grants to assist with opening 18 more food banks.

1979: The expansion of food banks across the nation inspired Van Hengel to form Second Harvest, now called Feeding America, a national association for food banks and a clearinghouse for large donations from national corporations.



1980s

THE BIRTH OF THE BLUE RIDGE AREA FOOD BANK

The poverty rate spiked again in the 1980s reaching nearly 15%. Domestic hunger-relief organizations continued to grow and expand.

November 13, 1981: In a modest warehouse on the outskirts of Staunton, VA, a group of compassionate individuals opened the doors of the Blue Ridge Area Food Bank for the first time. Operations began with just four board members and a meager bank account. Despite marginal means, they distributed a whopping 500,000 pounds of food through 35 partner agencies in the first year.

1982–1985: The food bank relocated headquarters to a larger facility in Verona and opened three other locations in Western and Central Virginia—first, the Lord Fairfax Area Branch in Winchester, then, the Thomas Jefferson Area Branch in Charlottesville, and finally, the Lynchburg Area Branch.



1990s

ENCOURAGING SELF-SUFFICIENCY

The economy boomed and poverty rates dropped and stabilized in the late 90s.

1995: The Food Bank introduced the Super Pantry program, teaching families—in particular single mothers—basic life skills. Over a four-week course, Super Pantry provided lessons in safe and nutritious food preparation, basic budgeting and other life skills.

1996: Congress overhauled the welfare system, reducing benefits and implementing the Personal Responsibility and Work Opportunity Reconciliation Act. This was designed to move people from welfare to work, requiring them to obtain jobs and instituting a five-year cap on Federal benefits. The reduction in benefits also shifted more responsibility for hunger relief to charitable organizations.

2000s

THE LOST DECADE

Despite strong overall economic growth early on, unemployment rose and wages declined. The U.S. Census Bureau reported that working families saw practically no change in household income from 2000 to 2007.

2000–2006: The Food Bank launched two new programs to combat the growing hunger problem among the most vulnerable: REACH in 2000, a food delivery program for homebound seniors and people with disabilities, and the Backpack Program in 2006, providing elementary school children with backpacks filled with food for the weekend and school vacations.

2002: The National School Lunch Program provided a staggering 4.7 billion school lunches. For some children, school was the only place they received a warm, nourishing meal.



2008: More than 35 million Americans were struggling with hunger and the economy descended into the worst recession since the Great Depression. Food, gas and energy prices skyrocketed and jobs disappeared in record numbers.

2009–2010: Charitable organizations scrambled to keep up with the flood of requests for help. Nothing illustrated just how serious the situation had become better than the Food Bank's 2010 Hunger Study. It revealed a 152% increase in the number of people served by the Blue Ridge Area Food Bank since the start of the decade.

Today



TODAY AND BEYOND

Today, charitable organizations face challenges like never before. More than 50 million Americans struggle with hunger.

In the Blue Ridge region, one in 10 people don't know where they'll get their next meal. At the Food Bank, we are preparing for cuts in federal nutrition programs, some of which supply 25% of the food we distribute. In addition, we're experiencing declining donations from major food manufacturers that are becoming more efficient and producing less excess inventory. Now, more than ever, community support is vital to our ability to serve our neighbors in need.

VOLUNTEER

THE GIFT OF TIME

Our mission of feeding the hungry is fulfilled through countless numbers of people volunteering at the Food Bank as well as in local food pantries, soup kitchens and shelters.

In fact, 84% of the food pantries we supply rely entirely on volunteers. Old and young, working and retired, students and employees, all give hours upon hours to make sure that life-sustaining food reaches those in need. And every bag or box of groceries is accompanied by a reassuring smile and a quiet nod of respect. The difference our volunteers make is immeasurable.

FOOD BANK VOLUNTEERS

201 *volunteers*
13,623 *hours*
300,109 *dollar value of time*



Volunteer Profile
JOANNE BABIC

FEELS LIKE HOME

Joanne Babic has been volunteering at the Blue Ridge Area Food Bank faithfully for more than 16 years. The opportunity fell into her lap in 1995—literally. Another volunteer asked Joanne to fill in for her and never returned after finding a new job. Joanne's been devoted to the cause ever since, and spends more than eight hours a week helping her hungry neighbors.

250 hours +

Edward Anderson
Ben Burke
Robert Canevari
Faye Crues
Carson Hall
Kevin Hammonds
Madison House
Dan Hunter
Matthew Oakerson
Jerome Scott
Lewis Smoot
Roxanne Steele

100-249 hours

Stanley Abbot
Joanne Babic
Florence Bonos
Tom Byrne
William Crabtree
Charles DeLa
Dick Dugan
Charles & Sue Duke
Michael Foreman
Gilie Garth
James & Sandra Givens
Denis Grushon
John Hawse
Post High
Rachel Irwin
John Koenig
Erika Littlewood

Thomas Morris
Walter Shaver
Jimmie Shipp
Diana Simpson
David Wade
Sebastien Yates

50-99 hours

Paul Brown
Lauri Conner
Cindy Davis
Harlan & Annis Eller
Charles Fairchilds
Marjorie Garmey
Columbia Gas
Yvonne Gilbert
James & Rebecca Harman
Jordan Hoke
LaQuita Hughes
Stephen Lockridge
Harry Newman
Mark Newton
Ben Ortman
Carolyn Pflug
John Powell
Luis Ramirez
Joseph Schad
Khaelicia Webb
George Weidig
Brandon Williams
Stuart Wood

Up to 50 hours

Tiffany Agler
Cynthia Aualos
Debra Baker
Joe Barrett
Darrell & Orpha Beyeler
Prayas Bista
Linda Blondel
Sedora Brown
Graham Busse
James Campbell
Madeline Campbell
James Canody
William Canody
Maria Carter
Zane Chandler
Barney Cincotta
Colin Clark
Aaron Cohen
Atticus Conway
Judy Craig
Donna Crosby
Tiffany Crosby
Carlisa Crutchfield
Hayden Curry
Ronnie Dalton
Jim DeHoniesto
Sarah DeSimone
Ronald Dolan
Michael Dorsey
Jane Dove

Margaret Dunifon
Robert Epps
David Evans
Jeannette Ewing
Ann Ferguson
Michael Ferretti
Marianne Fickling
Will Flores
Claire Fomaro
Joanie Freeman
Wendy Fretwell
Carolyn George
Susan Good
Jim Grimes
Ivy Haines
Terry Hall
Dillon Harner
Alice Harris
Courtney Harris
Holly Harris
Willie Hawse
Jacob Hellmann
Mike Henretta
Joseph Hill
Jim Hoffmann
Emily Hubbard
Melissa Ingram
Jon Isaacs
Gaurav Jain
Peggy Jenkins
Vivian Jones
Jeremiah Keck

Tom & Ruth Klippstein
David Law
Brittany Ledbetter
Kristina Lee
Jen Letouzey
Anthony Lewis
Jessica Lewis
Patty Lynch
Matthew McDonald
Sue McHenry
Matthew Bender & Co., Inc.
Jill Mongold
Lelon & Delores Moyer
Russell Nesselrodt
Ashley Noble
Wren Olivier
On Our Own, Charlottesville
Tonya Osinkoshy
Leon Owens
Hannah Pearce
Rebekah Phillips
Pam Pileski
Taylor Pileski
Lloyd Pollitt
Audra Powell
Dominion Power
Gary & Thelma Pultz
David Redding
Matthew Reed
Barbara Rexrode
Daren Rodgers
Babs Rogol

Crystal Rowe
Katie Ryan
Deborah Sack
Erin Schmitt
Grace Schultz
William Scott
Charles Shelton
Richard Shimer
Kristine Simmons
Edith Smith
Uriah Snoberger
Spencer Citizens Hunger
Fighters
David Spinoso
Lisa Spinoso
Robert Springer
Porcha Stewart
Sebastien Theroux
Debra Thomas-Pils
Samantha Tuennermann
Patrick Wade
Bruce Wells
Thurman Williams
Loretta Willis
Daniel Wilson
Scott Wilson
Sharon Wilson
Josh Wood
Diane Yerian

COMMUNITY PARTNERS ARE HEROES EVERY DAY

To achieve our mission of feeding hungry people, the Food Bank depends on the dedication of 307 food pantries, soup kitchens and shelters across central and western Virginia. We serve as a hub for food acquisition and distribution, acquiring food from local and national sources and distributing it to our partner agencies. Staffed almost entirely by volunteers, they in turn provide the food directly to neighbors in need.

From Winchester to Loudoun County, to Charlottesville and Lynchburg, and to Rockbridge and the Central Shenandoah Valley, our partner agencies are direct sources of help and compassion for 103,000 people each month. Coming from different traditions and faiths, they are joined in common cause. Together, we form a network dedicated to hunger relief and respect for the dignity of those we serve.

To every pantry coordinator, soup kitchen chef, shelter director and volunteer, we say thank you. Precious little could be done without you.

Shenandoah Valley Area

Allen Chapel A.M.E. Church
 American Red Cross, Central Virginia Chapter—Blue Ridge Branch
 Apostolic United Pentecostal Church
 Arc of Harrisonburg and Rockingham
 Bethany United Methodist Church
 Bethel Seventh-Day Adventist
 Blessed Sacrament Catholic Church
 Blue Ridge Chapel Church of The Brethren
 Boy Scouts of America Stonewall Jackson Area Council
 Brethren Woods Camp and Retreat Center
 Calvary United Methodist Church
 Camp Accovac
 Camp Alkulana, Richmond Baptist Association
 Camp Overlook, United Methodist Churches of Harrisonburg
 Campus Kitchen Project, Inc.
 Central Shenandoah Valley Office On Youth
 Central United Methodist Church
 Churchville Community Food Pantry
 Community Child Care, Inc.
 Community Ministry Food Pantry, Martin Luther Lutheran Church
 Cornerstone Church of Augusta
 Craigsville Area Food Pantry, Inc.
 Crimora United Methodist Church
 Crossroads Baptist Church
 Daily Living Center, Inc.

Destiny Family Center
 East Rockingham Ministerial Association Food Pantry
 Elkton Area United Services
 Emmanuel Episcopal Church
 Emmanuel Episcopal Church, Holy Cross Bread Fund
 Faith Point Christian Center
 Family Resource & Referral Center
 First Baptist Church of Harrisonburg
 First Baptist Church, Staunton
 First Presbyterian Church, Staunton
 First Presbyterian Church, Waynesboro
 Fishersville United Methodist Church Food Pantry
 Freedom Baptist Day School
 Furnace United Methodist Church
 Gemeinschaft Home
 Glen Kirk Presbyterian Church
 Greenville Baptist Church
 Greenville United Methodist Church
 Heart Havens Inc.
 Helping Hands Food Pantry, Mint Spring United Methodist Church
 Highland Education Foundation
 Hope Distributed Community Development Corporation
 House of Mary Emergency Shelter
 Joy of Life, Inc.
 Kingsway Help Center
 Kingsway Outreach
 Lee Robbins Ministries, Inc.
 Linden Heights Baptist Church

Little River Church of Brethren
 Lyndhurst United Methodist Church
 Main Street United Methodist Church
 Manor Memorial United Methodist Church
 Marquis Memorial United Methodist
 Massanutten Presbyterian Church
 Massie Haven
 Memorial Baptist Church
 Mercy House, Inc.
 Middle River Church of The Brethren
 Natural Bridge/Glasgow Food Pantry
 New Directions Center
 Open Door Gospel Church
 Patchwork Pantry
 Pilgrim Christian Fellowship
 Potter's House Praise and Word Ministries
 Rejoicing Life Baptist Church
 Restoration Ministries of Virginia, Inc.
 Roberta Webb Child Care Center
 Rockbridge Area Relief Association
 Salvation Army, Harrisonburg
 Second Presbyterian Church, Waynesboro
 Shenandoah City Search, Inc.
 Shenandoah Valley Community Church
 Shiloh Baptist Church
 Spring Hill Presbyterian Church
 Staunton Augusta County Relief Association
 Staunton Seventh Day Adventist Church

Staunton-Augusta YMCA
 Stokesville Community Church
 Trinity Episcopal Church
 Valley Aids Network
 Valley Mission
 Valley Program for Aging Services
 Verona Community Food Pantry
 Verona United Methodist Church Food Pantry
 Victory Worship Center
 Wayne Hills Edward Avenue Baptist Church
 West Waynesboro Church of Christ
 White Hill Church of The Brethren
 Windy Cove Presbyterian Church
 Word of Faith Church

Lord Fairfax Area

A Small Hand / Edinburg Christian Church
 Adventist Community Services
 Adventist Community Services—Seventh-Day Adventist, Front Royal
 Aids Response Effort
 American Red Cross, Winchester-Frederick County Chapter
 Backpack Buddies, A Ministry of Front Royal Presbyterian Church
 Blue Ridge Opportunities
 Boy Scouts of America Shenandoah Area Council
 Braddock Street United Methodist Church
 Bread of Life Food Pantry, Woodstock
 Catholic Charities of The Diocese of Arlington, Inc.
 C-Cap Of Front Royal/Warren City
 C-Cap of Winchester
 Centenary Reformed United Church Of Christ
 Christ Episcopal Church, Millwood
 Church of Christ at Mountain View
 Columbia Furnace Love Center
 Community Touch, Inc.
 Compassion Cupboard, Inc.
 Compassion House Food Distribution Center, The Rock Worship Center
 Crums United Methodist Church
 Dynamic Life Ministries
 Fauquier Community Action Committee, Inc.
 Fauquier County Food Distribution Coalition
 First Assembly Of God
 First Baptist Church, Front Royal
 First Baptist Church, Winchester
 Fishnet Christian Center
 Front Royal Church Of Christ
 Front Royal United Methodist Church
 Front Royal United Methodist Church
 Grace Community Church
 Grace Ministry Crossroads United Methodist Church
 Grafton School, Inc.
 Greenway Spirit & Word Fellowship
 Guilford Baptist Church
 Hayfield Assembly Of God

Heart Havens, Inc.
 Highland Memorial Presbyterian Church
 Isaiah 58 Project
 Leary Educational Foundation
 Lighthouse Baptist Church
 Loudoun Interfaith Relief
 Messiah's Market, The Community Church
 Mt. Calvary Evangelical Lutheran Church Day Care Center
 Mt. Olive Baptist Church
 New Beginnings Community Church
 Open Door Food Pantry Inc
 Page One of Page County, Inc.
 Phazz 1 Ministries, Inc.
 Rappahannock Food Pantry
 Redland Preschool & Daycare, Redland United Methodist Church
 Robert E. Rose Memorial Foundation
 Salvation Army, Front Royal
 Salvation Army, Winchester
 Seven Loaves Services
 Shenandoah Area Agency on Aging
 Shenandoah Valley Community Residences, Inc.
 St. Paul's Lutheran Church
 St. Paul's On-The-Hill
 Stephens City United Methodist Church
 Strasburg Presbyterian Church

2010-11

PARTNER AGENCIES

Street Wise Ministries, Inc.
 The Red Wagon Ministry
 Victory Assembly of God
 Volunteers of America—Loudoun
 Emergency Homeless Shelter
 Welltown United Methodist Church
 White Chapel United Methodist Church
 William & Henry Evans Home for
 Children
 Winchester Church Of God, Hope
 Again Community Care Center
 Winchester Union Rescue Mission
 Women of Duncan Memorial United
 Methodist Church
 Woodstock United Methodist Church
 Child Care

Thomas Jefferson Area

Albemarle Housing
 Improvement Program
 American Red Cross, Central
 Virginia Chapter
 Antioch Baptist Church
 Arvonian Christian Fellowship
 Beaver Dam Baptist Church
 Bethany Seventh-Day
 Adventist Church
 Bethel Church of God In Christ
 Bon Samaritain Mission Haiti, Inc.
 Boy Scouts of America Stonewall
 Jackson Area Council
 Buck Mountain Episcopal Church

Buckingham Church of Nazarene
 Calvary of Greene
 Calvary Seventh-Day Adventist Church
 Caring Friends Pantry, Oak Grove
 Mennonite Church
 Cavalry Hill Baptist Church
 Central Virginia Pioneer Club
 Charlottesville Abundant Life Ministries
 Christ Episcopal Church
 Church of Our Saviour
 Coveseville Baptist Church
 Crozet United Methodist Church
 Culpeper Senior Center
 Elk Hill—Charlottesville
 Empowering Culpeper
 Family Worship Center
 First Baptist Church, Charlottesville
 First Century Baptist Church
 First Liberty Baptist Church
 First United Methodist Church,
 Charlottesville
 Free Union Church of The Brethren
 Friends Who Care Ministry
 Galilee Church
 Gid Brown Bible Baptist Church
 Hazel River Assembly of God
 Hephzibah Pentecostal Assembly
 Church of Deliverance Ministries
 Holy Comforter Catholic Church
 Hope Village Day Haven
 Jefferson Area Board for Aging
 King's Corner Fellowship

Loaves and Fishes, Charlottesville
 Love Outreach Food Pantry
 Love, Inc.
 Maysville Presbyterian Church
 Miller School
 Monticello Area Community
 Action Agency—Fluvanna
 Christian Services Society
 Mountain View Nursing Home
 Mt. Moriah United Methodist Church
 Mt. Olivet United Methodist Church
 Nelson County Pantry
 New Beginnings Christian Community
 New Faith United Methodist Church
 North Garden Churches Outreach
 Ministries Food Bank
 On Our Own Charlottesville
 Piedmont House
 Raccoon Ford Christian Fellows
 Region Ten Community Services
 Board, DRC Division
 Rockspring United Methodist Church
 Salvation Army of Charlottesville
 Scottsville Bread of Life Ministry
 Senior Center, Incorporated
 Solid Rock Full Gospel Church
 Southside Church of God
 Spring Garden—Elk Hill Farm, Inc.
 St. Paul's Episcopal Church
 St. Stephens Episcopal Church
 Stanardsville Baptist Church
 Food Ministry

The Arc of The Piedmont
 The Crystal Cathedral
 Thomas Jefferson Area Coalition
 For The Homeless
 Thomas Jefferson Memorial Church—
 Unitarian Universalist
 Victory Hill Church of God Preschool
 Word of Deliverance and Help
 Ministries, Inc.
 Word of Faith Church

Lynchburg Area


Adult Care Center of Central Virginia
 Alliance for Families & Children
 Bedford Christian Ministries
 Association
 Bedford Community Christmas Station
 Bethel Church of The Brethren
 Bible Baptist Church
 Blue Ridge AIDS Support Services, Inc.
 Brookhill Wesleyan Church
 Burning Bush Church of God In Christ
 Candlelight Outreach Church
 Central Virginia Area Agency On Aging
 Central Virginia Community Services
 Chapel Grove Fellowship Center
 Chestnut Grove Baptist Church
 Court Street Baptist Church
 DAWN
 Depaul Family Services
 Ebenezer Baptist Church
 Fairview Christian Church
 Fairview United Methodist Church

Faith Assembly Children's Care Center
 Farr Foundation
 Fellowship Church of Christ
 First Assembly of God
 First Baptist Church, Altavista
 Grace Community Church
 Greater Lynchburg Habitat
 for Humanity
 Helping Hands Ministry
 Holiday Lake 4-H Camp
 Hope Aglow Fellowship Church
 Hunting Creek Food Pantry
 Hyland Heights Baptist Church
 Immanuel Baptist Church
 Jesus Center Way of Cross Church
 Langhorne Chapel Community Church
 L'arche Blue Ridge Mountains
 Liberty Godparent Home
 Lighthouse Baptist Church
 Lynchburg Community Action Group
 Lynchburg Daily Bread
 Lynchburg First Church of
 The Nazarene
 Lynchburg Neighborhood
 Development Foundation
 Lynchburg Seventh-Day
 Adventist Church
 Mary Bethune Academy
 Miller Home of Lynchburg
 Miriam's House
 Missionary Chestnut Grove
 Baptist Church
 Monacan Indian Nation

Network for Women In Crisis
 New Prospect Baptist Church
 Park View Community Missions
 Patrick Henry Boys Home
 Patrick Henry Girls Home
 Patrick Henry Girls Home of
 Bedford County
 Piedmont Community Impact
 Power 2 Excel
 Rivermont Area Emergency
 Food Pantry
 Rivermont Avenue Baptist Church
 Early Learning Center
 Salvation Army, Lynchburg
 Scott Zion Baptist Church
 Shekijahi Preparation Assembly
 Smyrna Seventh-Day Adventist Church
 Solid Rock Baptist Church
 The Gateway House
 Virginia Cares, Inc.
 White Rock Hill Education Center



WITH GRATITUDE *to* OUR DONORS



No act of kindness is more fundamental to our culture than sharing food with a neighbor in need. And with each and every gift, no matter the amount, that is what you do through your support of the Blue Ridge Area Food Bank. You are making an immediate and meaningful difference in the lives of others, and we are truly grateful. Thank you.

2010 DONORS

Shenandoah Valley Area

\$10,000 +

Augusta Health Care Foundation
Commonwealth of Virginia Campaign
ConAgra Foods Foundation
Feeding America
Feeding America - Food Lion
Community Affairs
John W. and Beulah S. Root
Stop and Shop Family Foundation
USDA Food and Nutrition Service

\$5,000-\$9,999

I. Joseph and Anne Driver Family Fund
Ralph W. Cline
Community Foundation of Harrisonburg and Rockingham
Community Foundation of the Central Blue Ridge
Cheesecake Factory, Inc.
Robert H. Driver
Ruth T. Edwards
Leighton D. and Kathryn Rexrode Evans
Federation of Virginia Food Banks
Mary T. Fetherolf
First Presbyterian Church/Harrisonburg
Gillespie Charitable Trust
Highway Corporation
J. Irvin Marshall
Michael J. and Sandra H. McGinnis
Richard T. Minkovich

Pampered Chef
Patchwork Plus, Inc.
Presbytery of Shenandoah
Rockingham Memorial Hospital Foundation
Ruby Tuesday
Helen W. Shickel
Shickel Corporation
David R. and Patricia Driscoll Smail
Swedish Match North America Inc.
Target

The Wachovia Wells Fargo Foundation
TJX Foundation
Wal-Mart Foundation
Helen M. Wetsel

\$2,500-\$4,999

Blue Ridge Community College
Ruth W. Bryant
James S. and Sylvia E. Butt
Cadence, Inc.
CAPSAW
Cerro Fabricated Products, Inc.
Church World Service, Inc.
Community Fellowship Church
Lil Lambs
Gary E. and Robin Dove
Emmanuel Episcopal Church
Jacquelynn Estes
L. Kathryn Evans
General Mills
Joyce A. Harlow
Harrington Family Foundation
Houff Transfer, Inc.
Lyman P. Q. and Luanita W. Johnson
Hahns A. and Suzanne B. Kanode
M. Belmont Verstandig, Inc.
MillerCoors Brewing

Nationwide Mutual Insurance Co.
Wayne A. and Lynne L. Pankey
Robert A. Parsons
Gail Y. Petersheim
Virginia Frances Plecker
William A. Reider
Thomas C. and Mary Ann Hays Family Foundation
Virginia A. Warrick
Johnny R. and Jennifer T. Wolfe
Woodforest Charitable Foundation

\$1,000-\$2,499

Halvor Aaslestad
Anglican Church of the Valley
Russell L. and C. Carter Arbaugh
Augusta Stone Presbyterian Church
Philip E. Balsley
Barren Ridge Church of the Brethren
Matthew L. and Sandra Baylor
Laurie Berman
Charles P. and Jo Ann Bilbrey
Churchill L. and Gretchen W. Blakey
Blue Ridge Chapter AARP #544
Blue Ridge Region SCCA
Walter Braukmann
Bridgewater College
Bridgewater United Methodist Church Women
Shelby Brown
Holly J. Browne
Jay A. and Susan E. Buerkel
S. Kay Burnett
John and Velda Campbell
Carr Family Foundation
Christ United Methodist Church
Henry C. and Mary Ann B. Clark
Karen S. Cline
Thomas J. Cochrane

Richard A. and Fay M. Coffman
Lawrence and Renee Conell
Covenant Presbyterian Church
Wayne A. and Cindy B. Crickenberger
Dayton Bridgewater Lions Club
Dayton Church of the Brethren
Mensel and Linda Dean
Forrest and Frances Dickinson
Hetzel E. and Nolda B. Dove
E.J. and J. B. Downs
Dupont Community Credit Union
Susan Enis
Janet P. Fifer
Richard Findlay
Jacob Ford
David and Lucinda Fuller
David R. and Donna L. B. Gallatin
Joseph W. Gallier
Quintin and Donna Garber
Sandra Garrison
Michael R. Evans and Amy C. Ghaemmaghami
Herbert Lawrence Godschalk
Thomas G. and Lisa Gray
F. Lynn and Betty D. Griffith
H and R, Inc.
Imad A. and Betty J. Hannoun
David and Susan Harman
Buddy F. and Mary Sue Harrison
Haugen Consulting, LLC
Dorothy C. Hildebrand
Thomas E. and Linda K. Hill
Felicity Hood
Jeannette Hull
Thurmond and Betty Jenkins
JMU Psychology Peer Advising
Daniel and Dorothy Kanagy

James R. and Darlene B. Keane
Kiwanis Club of Staunton
J. Philip and Judith Knopp
Frances M. Kray, D.D.S.
William M. and Susan L. T. Krzastek
Lambda Chi Alpha
Herbert T. and Margaret L. Lewis
Linden Heights Baptist Church
Christopher M. and Elizabeth A. Little
Mr. and Mrs. Donald C. Long
James V. Loughran, Jr.
Mary Ellen Lucas
Jane N. and Preston C. Manning, Jr.
R. E. and E. J. Marks
Joseph A. and LaVonne Martin
Ivan J. and Peggy G. Mason
Marion E. and Joan M. Mason
Massanutten Presbyterian Church
Catherine D. and John L. Matherly, Jr.
Russell and Charlene May
Jan T. McCarthy
Lonnie W. and Joan D. McCauley
Merck Partnership for Giving
Andrew C. and Kathryn D. Middleton
Mid-Valley Claims Assoc.
Michael Jansen and Sarah Marie Mies
Kaylor Monger
Jerome and Susan Moniot
Abigail L. Montgomery
William R. C. Munsey
C. Carter and Esther J. Myers
John D. Myers
Donald Taft Nair
Anthony W. Neal
John N. and Linda E. Neff
Michael Neupauer
New Hope U.M. Church Mens Club

New Hope United Methodist Church
Ed and Jean Newman
Nielsen Builders, Inc.
Wayne and Carrie Norris
Mike O'Baugh
Karen M. Olivares
Panera Bread Foundation
Charles R. and Susan M. Pauly
Robert S. and Jean V. Pearman
Duke and Judy Perry
Wilmer R. and Laura F. Phillips
Pines Chapel Presbyterian Church
Naomi G. and T. O. Ramsey, Jr.
Brenda C. Rector
H. D. and Barbara J. Riddleberger
Daniel Hostetter and Catherine Rittenhouse
Rocky and Brenda's Gold and Silver
Randall E. and Susan F. Roe
John C. and Sally Rogers
Ronald W. and Mary Ellen Rohrbaugh
Peggy and Paul Rosthauser
Thomas Rusmiselle
Victor G. and Kim M. Saunders
Joseph and Deborah W. Scalise
Byron and Carol Scheidt
Scovan Financial Services, Inc.
Shenandoah Valley Campground
Gary and Rebecca W. Shickel
Mark A. and Kendra K. Shickel
Gloria L. Shiflet
Yvette Sholes
Alan and Sarah Shomo
Carol and Fred Showker
Charles Slott
Robert C. and Nancy M. Sorgen
Springdale Mennonite Church

St. John's Catholic Church
 St. John's Episcopal Church
 St. John's Episcopal Church—
 Agape Fund
 Norman J. and Kristine E. Stern
 Judith A. Stevens
 Judy and Malcolm Sullivan, Jr.
 Michael R. and Sharon M. Summers
 Louise H. Swartz
 W. Rothwell and Connie M. Switzer
 Teamsters Local No. 29
 Ray and Justine Tilghman
 Tinkling Spring Presbyterian Church
 Trinity Episcopal Church
 Charles R. and Patricia L. Trippel
 United Way of Greater Augusta
 Helen L. Vaughn
 VFW Post 2216
 Wachovia Foundation
 Dorothy and Charles W. Wampler, Jr.
 Waynesboro Woman's Club
 Bonnie and Winston Weaver, Jr.
 Christopher Gavalier and Lesley
 Wheeler
 Lewis White
 White Hill Church of the Brethren
 Stanley D. Wine
 David and Susan Wolf
 Gladys B. Wonderley
 Jeffrey L. and W. Joan Woodie
 Larry and Deborah E. Wright
 Joyce C. and H. Steve Wszalek, Jr.
\$500–\$999
 Jane C. Adams
 Agriculture Consulting and Elbe Farm
 Partnership
 George R. Aldhizer
 Richard and Betty Algoe

Amvets Post Virginia 7
 Charles Hill Anderson
 Stephen D. and Jenny W. Andes
 David H. and Jo B. Anthony
 Noel Armstrong
 Augusta Lions Club
 Anne P.H. Ayres
 Donald and Amanda Bailey
 Charles and Shirley Baker
 Harold E. and Caroline W. Baldwin
 Bart and Sharon S. Balint
 Dr. George A. and Elizabeth Bentrem
 Sharon Cote and David Bernstein
 Bethel Presbyterian Church
 Bethlehem UCC Women's Fellowship
 Edward W. and Evelyn F. Biller
 Blue Ridge Corvette Club
 Blue Ridge Insurance Services, Inc.
 A. Richard and Sharon Adam Bolstein
 Bruce M. and Nancy L. Bowman
 James M. Bowman
 Price and Tina Boxley
 Auburn A. and Ruth D. Boyers
 Michael H. and Gwyneth Brandt
 Douglas T. and Elizabeth F. Brown
 Henry W. Brown
 C. D. Lantz Fund
 Paul B. and Lucile I. Campbell
 Ethel R. Cashell
 Central Tire Corporation
 Rebecca H. Chalam
 Marvin L. and Rita D. Chaplin
 R. Bradley Chewing
 Kenneth and Charlotte Cleveland
 Claude and Alice-Lee Coakley
 Joseph A. and Alleen L. Cox
 Robert E. and Barbara B. Cox

Sally E. Cureton
 Walter W. and Ann G. Daggett
 Olumide and Amy Danisa
 Deerfield Ruritan Club
 Thomas B. and Judy M. Didawick
 Doe Hill United Methodist Church
 R. Savage and G. Doggett
 James L. and Candace H. Donnelly
 Brownie M. Driver
 Gladys A. Driver
 John C. and Scharlene C. Dunn
 Louise M. Dunn
 Isaac Early
 Cynthia Easterling
 Matthew A. and Jane T. Eckert
 Emmanuel Church of the Brethren
 Erie Insurance Co.
 Falling Waters, Inc.
 Farmers and Merchants Bank
 Finley Memorial Presbyterian Church
 First Church of the Brethren
 First Presbyterian Church/Staunton
 Peter and Nora Fisher
 Wayne and Betty Fitzgerald
 Ellen Fitzwater
 Christopher J. Fox
 Marvin L. and Hazel N. Garber
 Paul A. Garst
 Gemini Incorporated
 Roger C. and Marie M. George
 George R. and Evelyn W. Brothers
 Charitable Trust
 Jeff and Gretchyn Germroth
 Robert G. Gilmer, III and Susan E. Gier
 Glass and Metals, Inc.
 Joseph L. and Doris L. Glick
 Glovier Memorial United
 Methodist Church

Gold Wing Road Riders Assoc.—
 Chapter R
 Kurt P. and Dinah H. Gottschalk
 Grace Evangelical Lutheran Church
 Great Eastern Resort Management, Inc.
 Greenmonte Mennonite Church
 Kathleen G. and Robert C. Gunther
 Jerome J. Hotchkiss and Kimberly
 A. Haines
 Joe N. Harris
 Harrisonburg Disc Golf Club
 Debra L. Hartman
 Richard H. Hawkins
 William and Kathleen Heatwole
 Hermitage Presbyterian Church
 Clay E. and Nancy H. Hewitt
 Jerry and Ginger Hewitt
 James B. and Stephanie Higgs
 Hunter R. and Mary Margaret Hollar
 Phyllis and Marvin E. Hollowell, Jr.
 Mary Bob Holm
 William W. and Patricia Huestis
 Dolly M. Hughes
 J. Webb and Carol H. Hypes
 James Madison University
 Daniel E. and Susan Maxwell Jenny
 Jerry's Automotive Center
 Robert F. Jochen, V.M.D.
 Doris M. Joecks
 Lavinia Winegar Johns
 Carolyn Johnson
 Rebecca Johnson
 Carolyn M. and Andrew J. Johnson, Jr.
 Corinne B. Johnston
 William J. and Faye G. Jones
 Betsy N. Jordan
 Just Jazzin'
 Brian and Tammy Katsorelos

Ethelmay Keeney
 Frederick G. and Elizabeth K. Keihn
 Leroy and Juanita Kiser
 John E. and Madeline Koehler
 Sandra Elaine Kreider
 Donald D. Largent
 Anne M. Lawson
 Jeffrey and Brenda Lenhart
 David and Mary Lewis
 Richard W. and Wanda C. Liskey
 Thomas L. Pearce and Nancy K. Love
 Carol S. Lown
 Mary N. Mannix
 Thomas E. Mayer
 Bettie Anne Mayo
 Anne S. McFarland
 Daniel and Barbara McSweeney
 Mennonite Foundation
 Merck and Co., Inc.
 Herbert C. and Sheila A. Merritt
 David and Tamey Meyer
 Bertha J. Miller
 Michael B. and Martha F. Moneymaker
 A. F. Mooney
 Anne J. Moore
 Todd Hedinger and Ann-Janine Morey
 Jerry F. and Rebecca W. Morris
 Donald G. and Beverly A. Morthole
 Richard J. and Lindsey W. Moynihan
 Mt. Horeb Presbyterian Church
 National Wild Turkey Federation
 New Hope Ruritan Club
 New Hope United Methodist
 Church Youth Group
 Orange County's United Way
 Gary A. and Rebecca F. Orebaugh
 Kenneth and Lori Overway

Thornton and Eugenia Parker
 Paul Davis Restoration
 Piedmont Transportation Association
 Berk and Lee Pemberton
 Margaret R. Pence
 G.O. and Jane Pendergraft
 Bonnie Pitsenbarger
 Marilyn Polan
 Laura Cammaroto and Steven
 Pratzner
 Margaret H. and Richard L. Quickel, Jr.
 R. Campbell and Associates, Inc.
 Timothy J. and Taurina L. Rardin
 RBC
 John C. and Judy H. Recknagel
 Stephen R. and Debbi G. Reed
 Harold W. Reid
 Joseph E. Reid
 Robert J. and Judith Reifsteck
 John J. and Melisa C. Reilly
 REO Distribution
 Billy E. and Linda W. Rexrode
 James and Brenda Ringgold
 Glen A. and Linda S. Ritchie
 Charles R. and Martha Robinson
 Randy and M.J. Robinson
 Verna A. Rodes
 Richard Roof
 John H. Rose
 A. R. and Kathleen Rottenborn
 William Runkle
 Ann Ruppenthal
 J. Guy and Betty A. Rusmiselle

2010 DONORS

Luther A. Sandridge
Sangerville Church of the Brethren
Carl and Lorna Saunders
Robert W. Scates, Jr.
Caroline C. Schooley
Second Presbyterian Church
Matthew G. Sensabaugh
Virginia H. Sensabaugh
William L. and Vicki D. Sessions
Deloris C. Shank
Shenandoah Heights Baptist Church
Winston W. and Melissa D. Shifflett
Scott H. and Sally W. Shomo
Shomo Farms, Inc.
James M. and Carol Showalter
Paul F. and Wanda L. Showalter
Charles H. Simmons
Tammy Coulter and Earl Sipe
Skyline Chapter Model A Ford Club
Evelyn M. Smith
F. Douglas and Caroline Smith
Janet C. Sohn
Sorrels Seamless Aluminum Gutters
Fragie L. Spangler
Spring Hill Pres. Church - Hope Circle
Judith E. and Millard F. Springer, Jr.
St. Francis of Assisi Catholic Church
Kenneth W. and Donna L. Stanley
Starlight Real Estate III
Staunton Best Buy
Staunton Church of the Brethren
Staunton Rotary Club

StellarOne
Phillip Stone
Gene A. and Elizabeth A. Stultz
Richard and Carolyn Stutzman
Donald W. and Betty Ann Sullivan
Sunnyside Retirement Community
Superior Concrete, Inc.
Marian B. Suter
Michael and Amanda Swartley
David and Elizabeth Swingle
Laura Ann Thornton
TIAA-Cref
Timber Ridge Presbyterian Church
Albert and Jean M. Tkacik
Trinity Presbyterian Church
Truist
Valley RC Flying Club
Jerry R. and Beverly A. Vanlear
T. Keith and Teresa P. Vest
Harry H. Warner
Stephanie A. Wasta
David and Rosalie Waterman
Grace B. Watt
Waynesboro Church of the Brethren
Samuel H. and Helen W. Weaver
Anthony and Katherine Weber
WellPoint Associate Giving
Campaign
Westwood Baptist Church
White Birch Estates
Diane Osmundson and Lois K. Whitmer
Crystl D. Whitmire
Lynn A. and Harry T. Williams, Jr.
Larry J. and Faye R. Wills
Evelyn Wise
Rebecca H. Wiseman
Douglas D. Withers, Jr.

Nadine Womble
Katherine T. Wood
\$250-\$499
Roger E. Abshire
Advanced Telephone and Data, Inc.
Ahold Financial Services
Charles and Anne Ajemian
Ryan E. and Katherine E. Aleshevich
Robert and Shirley Allen
Donald E. and Amelia W. Ammons
Allen R. Archer
Ariake U.S.A., Inc.
Asbury United Methodist Church
Augusta County Schools
Augusta Expoland
Alex and Jacqueline Avery
Margaret G. Bagnardi
Janice M. Ballinger
Luther Bane, Jr.
Richard G. and Mary M. Barnes
Glenn W. and Sylvia J. Barrett
Sharon Smith and Emil Barszcz
Basic United Methodist Church
Women Bazaar
Lillie C. and James H. Beach, Jr.
Lee and Timothy Beasley
Joel E. Thompson, Jr. and Kathy Belcher
Barbara Bell
Gwynn H. and Marianne N. Bell
R. Mardre and Caroline D. Bell
Steven D. Bennett
Anita M. Benson
Thomas L. Berger
Glen and Zona Berkshire
Michael and Deborah Berrington
Beth El Congregation
Bethany Presbyterian Church Men

Steve E. Biller, Sr.
Deanna G. Bolton
Kenton C. Bosserman
Jacob and Julia Botkin
BotkinRose PLC
M. Kennon and P. Roger Bowen
Richard L. and Cherie M. Bowen
Mary H. Bower
Jane H. Bowles
Lois B. Bowman
BPOE No. 2270
Addison D. Brainard
Bridgewater College
Broadway Lions Club
Richard D. and Katherine J. Brunk
Mr. and Mrs. Earl Burcham
A. E. Burke
Ted and Elsa Burrowes
Penny L. Cabell
Jean T. Callison
Calvary United Methodist Church
Ned R. and Tina K. Campbell
R. L. and N. S. Campbell
Ricky Lyle Carter
David W., MD and Patricia S. Caulkins
Cedar Run Church of the Brethren
David and Deborah Cheezum
Dale G. Chesnut
Joyce M. and Howard E. Clay, Jr.
Catherine Hankla Clem
E.F. and S.W. Click
Michael and Jean Click
George L. and Judy F. Coffman
Kathleen K. Coffman
W. L. and Nancy W. Coffman
Keith and Paula Coleman
Richard L. M. and Janeth B. Coleman

Barbara Fielding Colson
Robert T. and Michelle R. Conley
Marian H. Conner
Alan H. Cook
Alice M. Coppic
Coulee Region Organic Produce
Coop.
Robert and Martha Cowles
Timothy and Amanda Crider
Teresa J. Crimone
Roy O. and Bertha M. Crum
Paul D. and Corinne E. Crumley
Beryle and Teresa Cumbie
Gary D. and Mary S. Cupp
Jeane C. Custin
Janet Daniel
Mr. and Mrs. Purcell Daughtry
Jean P. Davis
Roger and Carolyn Davis
W.H. and Joyce A. Davis
Dayton United Methodist Church
Octavio and Kathleen De Los Reyes
Berlyn A. and Shirley M. Dean
William and Karen Dean
Deerfield Baptist Church Adult
Sunday School Class
Raymond P. Demattia, Jr.
Celesta R. Dexheimer
Barbara L. and Henry P. Deyerle, Jr.
Guy and Lucille Didawick
Anna M. Day and Elizabeth D. Dinwiddie
Ed and Phyllis Dodd
Don Largent Roofing, Inc.
David Driver
Judy Ann Dudley
Martha K. Dudley
Joseph and Eleanor Duffield

Robert Irvine Dunn
Eugene D. Earle
Michael and Beverly Earman
Gwenlyn T. Eavers
John D. Eavers
Electric Connection, Inc.
Ernest W. and Clarissa M. Elliott
Emmanuel Church of the Brethren
Alfred F. Everiss
Fairview Church of the Brethren
Frank and Denise Farrar
Beverly M. and William L. Faulkenberry, II
Jean L. Fifer
Clint W. and Regina S. Fisher
Mr. and Mrs. H. T. Fisher
Fishersville Ruritan Club
Fishersville United Methodist Church
Charles M. and Gladys D. Fiske
David and Kathleen Fitzgerald
Samuel D. and Lillian V. Flory
Betty A. Forkovitch
Louis L. and Karen S. Fox
Charles E. and Joyce Fraley
Virginia R. Francisco
Fraternal Order of Police
Frederick House
Winton M. and Ava P. Funk
Johnny and Betty Funkhouser
Richard T. Gardner, Sr.
Richard E. and Judith M. Gardner
John W. and Carol Gibson
James E. and Shirley E. Gillespie
Nancy C. Gimbel
Harold and Lucy Godby
Judy and Garland Golladay, Jr.
Henry G. and Joyce R. Goodbar

Grace Evangelical Lutheran Church
Joe Griffith
Michael Groah
Fred I. and Barbara A. Grunder
Elizabeth I. Guss
Diane Guzzi
Donald L. Haines, Sr.
Patsy Hall
Mark A. and Pamela Persing
Hammock
Laurie F. and Selby B. Hardwick, III
H. T. Harlow
Paul K. and Beatrice J. Harnad
Monford J. and Tamela Sue Irwin
Harness
F. Douglas and Nancy S. Harris
James and Charlene Harris
Martin and Elizabeth Hayduk
Phyllis W. Hearn
Ruth V. Heatwole
Lola B. and Branch A. Hensley, Jr.
C. Alan and Sue N. Hiner
Freda Hite
Brent M. and Karen F. Holl
Jacquelyn E. Horn
Bryan and Christine Horne
Michael and Rose Ann Houliston
Erskine L. and Margie F. Houser
Mr. and Mrs. L. O. Howard, Jr.
Eugene H. and Ellen Howell
Stephen A. and Sara S. Howlett
Harold E. Huber
Huffman Trailer Sales, Inc.
Timothy A. Hunley
Teresa D. Hupp
John and Monica Huson
Barbara K. Hutton
James and Kelly Hyson

Inn at Old Virginia
Interchange Group
Sherwin John Jacobs
Ronald L. and Joyce Funk
Jesielowski
JJ's Soft Serve, Inc.
Steven L. and Vicki J. Johnson
John and Dale Johnston
Jollivue United Methodist Church
Betty S. Justis
Keezletown United Methodist Church
Melvin and Dorothy Keim
Douglas Keith
Kenneth W. Keller
David and Carolyn Kenee
Edith C. Kerr
Sally W. Kerr
G. Stephen and Margaret L. King
John F. and Laura A. King
Kingfisher and Company
James and Carson Kistner
Jason and Paige Kite
Fred A. and Mary Y. Klaburner
Paul A. and Virginia B. Klann
Dan and Becky S. Knicely
Ronald D. and Sandra S. Knicely
Koogler Survivors Trust
Lois M. Koontz
Shirley M. La Croix
Tommy R. and Linda H. Lail
Amos and Rebecca Laine
Virginia M. Lansing
David L. and Patricia A. Laurenz
Nancy M. Lawrence
Kent D. Leichty
Roger D. and Evelyn C. Leichty
Jill Lemery

Phil and Maryellen S. Lemons
Claude W. Lewis
Troy Lewis
Todd D. and Dina S. Lilley
Graham C. and Rachel M. Lilly
Linville Creek Church Friendship
Class
Carroll Lisle
Donald D. Litten
Georgie E. Long
Lloyd L. Pollitt and Joyce A. Loving
Linda Henneman and
Monique Lowman
Main Street United Methodist Church
J. P. and D. A. Mangun
Dwayne E. Marshall
Harold B. and Frances S. Marshall
Daniel H. and Ruth Ann Martin
Doris M Martin
Martin Luther Evangelical
Luthern Church
Robert and Ivy McCann
Ollie T. and Geraldine D. McCray
McDonough Toyota and Scion
Thomas McKenzie
Alba McLinskey
Daniel B. McMillan
Ina Mae Meadows
Naomi S. Meadows
Alfred and Marie Menard
Mennonite Foundation, Inc.
Ruby J. Mette
Sheila K. Michael
Thomas P. and Anne M. Mies
Frances S. Miller
Jean E. E. Miller
Paul D. and Evelyn P. Miller
Robert R. and Terri G. Miller

Miller Foundation, Inc.
M. Shaun and Lori A. Mooney
Arlene T. Moren
David and Heather Morgan
Sue Crickard Morley
Byron R. and Darlene H. Morris
Scott and Kay Morrison
Patricia G. and Joe B. Morton, Jr.
Moscow Church of the Brethren
Jewel M. Moyer
Bradley J. Moyers
Mt. Crawford UMC Men
Mt. Pleasant Church of the Brethren
Mt. Sidney Methodist Church
Janet E. and Bernard J. Murtaugh, Jr.
Troy L. and Wanda M. Muterspaugh
Hubert and Evelyn Myers
Robert W. and Jane Carol Myers
Robert E. and Delores M. Nash
Robert E. and Hilda D. Neff
Jim and Rebecca Newcity
John S. and Stella Newlon
Jacqueline M. Norcross
Patricia R. and Evarts W. Opie, Jr.
Otterbein UMC Willing Workers Class
Allen and Betty Jo Ours
Packaging Corporation of America
Cynthia Page
Jerry and Donna Pangburn
Park View Federal Credit Union
Crawford S. and Judy A. Patterson
Reba C. Patterson
Michael and Shelley Payne
Roger E. Pegram, Jr.
Audrey G. Pena
Lewis Pennington
Zack T. and Judith S. Perdue

L. D. and Erma L. Pfeiffer
Melva Piland
Christopher N. Plum
William and Lana Powers
M. B. and M. A. Pritt
S. H. and Susan J. Propst
Puppy Luv
Quality Deer Management Assoc.
Erika Raskin
Harry L. and Reba S. Rawley
James C. and Elizabeth T. Reed
Susan I. Rees-Enis
Paul L. and Marsha H. Rexrode
Robert and Angeline Rexrode
Rexrode Contracting
Robert J. and Hinda L. Richards
Stella I. Riddle
Kenneth L. and Peggy Riggle
Mason S. and Nancy S. Riggs
Riverheads High School
Kathryn M. Roche
Rockingham Memorial Hospital
William Epstein and Sheena Rogers
Ralph S. Rohrer
Raymond L. and Mary W. Rohrer
Carl and Cheryl Rosberg
RosettaStone
Nelson W. Ryder
David and Henrietta Schmitt
Schwab Charitable Fund
Robert D. Scott
William and Peggy Sease
Brooke E. Sedr
John and Karen Sellers
Frank and Shirley Shakespeare
Nelson E. and Marjorie R. Shank
Mr. and Mrs. Phillip H. Sharpe

C. Joseph Sharrer
Shenandoah Valley British Car Club
Hazel K. Shirk
Michael W. and Evelyn M. Shirkey
Kirk L. and Mary Ann Shisler
Glen F. and Linda K. Showalter
Goldie and Kay Showalter
Mark A. and Mary Jane Showalter
Denise B. and Jeffrey A. Showell
William Shuler
Matthew and Leigh Siderhurst
Larry M. and Deborah Simmons
Catherine and Arthur Smith, Jr.
Karen Madison Smith
Kenneth R. and Ann W. Smith
Smyrna Presbyterian Church
Ray and Phyllis H. Sonner
Spotswood High School
St. John's Untd. Methodist
Men's Club
St. Paul Lutheran Church
David W. and Bonny Jean Stanley
Eric and Cindy Stark
Staunton Augusta Junior
Women's Club
Staunton Chapter #1650 AARP, Inc.
Staunton Foods, LLC
Staunton Youth Football League
William J. Steele
Jack D. and Linda A. Stenger
Sandra L. Stephenson
Joyce L. Stoll
Arthur T. and Karen L. Strawderman

2010 DONORS

Harold E. and Hilda L. Strawderman
George and Anne Strickland
Garnet S. Suiter
Summit Church of the Brethren
SVEC Engineering Group
Tom and Shirley Swann
Forrest Swope
Mary Lou Sylvia
W. D. and Mary Terrell
Thomas N. Textor
F. Paul and Hazel E. Thacker
F. Paul Thatcher
Larry R. and Suzanne F. Thomas
Kevin M. Thomson
Linnea A. Thuresson
Tinkling Spring Presby. Chr. Youth
Town and Country Furniture
Gerald Tracy
Diane Grace Travis
Victor L. and Phyllis P. Truxell
Debra E. Turner
Tuscatube, Inc.
M. Edward and Jacenta K. Tutwiler
David A. Umberger
Union Presbyterian Church
Unitarian Universalist Fellowship of
Waynesboro
United Methodist Women
V. Leroy and Doris L. Harsh Trust
Richard M. and Cathleen M. Vaught
Daniel I. Wachspress
Jodie E. and Phyllis D. Wampler
Rick and Joyce Wampler

Elizabeth A. Warren
Patrick and Carol Webb
Robert J. and Mabel W. Weiss
Paul E. and Krista M. Welder
Gene R. and Janet F. Weller
Carleen Layman and Evan Wenger
West View Title Agency, Inc.
Hugh E. and Connie H. Westfall
Westminster Presbyterian Church
Robert E. and Carolyn H. Wetsel
Roxie White
George and Jean Whiting
N. Paige and Ann Will
Charles F. and Shirley A. Williams
John T. Williams, Jr.
Robert B. and Robin L. Williams
Paul G. Williamson
Gary D. and Sylvia S. Wingfield
Ilse L. Winter
Robert B. and Joy E. Woodworth
Martha Wray
Carl K. and Marnita A. Wright
Robert and Juanita Wysong
John C. and Pauline W. Wysor
Edward and Mary Yarnell
Mr. and Mrs. Robert W. Young
Mark B. and Denise A. Yurish

In Memoriam

Betty Adams
Calvin Andes
Robert Balderson
Edith Ballard
Donna Barker
Audrey Barnhart
John Barszcz
Cecil Beckner
Sarah Bell
Rebecca Bible

Catherine Blackley
Rachel Blosser
J. Stuart Bosserman
Crystal Bottom
Wade Bowman
MaDee Boxler
Dorothy Bradburn
Rafael Brand
Bob Brown
Clyde Brown
Harry Brown
Robert Brown
Stanley Calder
Scott Callison
Hallie Campbell
Ronald Chandler
Louis and Ronny Combs
Carl Conner
John Coppic
Mr. and Mrs. Wilfred Coutier
Arvin Creef
Mary Critzer
Jane Crowder
A. E. Dabney
Ken Davis
Kenneth Davis, Sr.
Robert Deaner
R.O. Deavers
Nelson Diehl
Connie Driver
Lois Ellison
Ruth Evans
Iris and Robert Figgers
Iris Figgers
Robert Figgers
Theodore Fitzgerald
Lillian Frank
Harold and Louise Fretwell

Mr. and Mrs. Dale Gambill
Harry Glover
Hunter Gochenour
Lucille Grimm
Sharon Grose
George Gunn
Rena Haines
Buddy Hall
David Gerald Hall
Buddy Hall
Regina Ham
Lillian Harrington
Barbara Hartman
Sharon Heath
John Heatwole
Mary Hensley
Deloris High
Roger Hill
Donald Hinkle
Jacob Huffman
Sarah Huffman
Ashley Humphries
Warren and Mary Jarrels
Mark Jensen
Betty Johnson
Nancy Johnston
Julia Jones
Patricia Jordon
Gertrude Kross
John Kruienza
Brendan Lackey
Michael Larson
Jane and Hester Lawhorne
Roxie Lee
Sue Lemisk
Harlan Lemley
A.W. Lewis
Claire Liddle

Eleanor Liskey
Garland Long
Vi Loomis
Alice Lynch
Kathy Lynne
Lee Maneu
Lucille Marion
Kenneth Markiewicz
Evan Martin
William McCarrick
Betty McCoy
Paul McEnery
Jeffrey Meade
Ross Meadows
Family Members
Earl Mitchell
Alomia Moore
Donald Moore
Joan Moore
Mae Morris
Elzie Morris, Sr.
Ralph Mowry
Rupert Mulhearn
Ashby Murray
Donald Nemeyer
Ralph Newman
Lissie and Martin Norcross
Ruby Orebaugh
Robert Pages
Ann and Floyd Phillips
Rodney Plaughter
Gary Potter
Lou Powell
Lt. Alex Prezioso, II
Jo Ann Price
MacLan Proutt
Louise Rhodes
Ruth Ringgold

Dawn Ritenour
Naomi Roberts
Elwood Roche
Russell Sapp
Edward Schaefer
James Schmitt, Sr.
Edward Shank
Tom and Doris Sheets
Dr. William Sheppe, Jr.
Auna Sherfey
James Shifflett, Mr.
Greg Sholes
Jim Shomo
Kay Simmons
Charleen Sipe
Thomas Sipes
Pennie Smith
Thelma Smith
Barbara Spradlin
Erskine Sproul
Edna Starnes
Patricia Stoughton
Carl Tally
Dr. and Mrs. Textor
George Thomas
Nannie Troxell
Andy VanBruggen
Eunice Wade
Elwood Walton
Leroy Weakley
Ben Wheatley
Eugene Whitesell
Garland Whitmer
Danny and Bobby Whitmore
Robert Whitmore
Roy Wine
Hazel Wine
Karl Womble

Bill Wright
Mr. Wright
William Wright
Dr. Robert Zaccaria
Gussie and Rose
Micky
Lindsay
Mary and Paul

Lord Fairfax Area

\$10,000 +
1818 Robert, LC
Agua Fund, Inc.
Aidmatrix Foundation
James L. and Mary J. Bowman Trust
F. Alan and Jane F. Dulaney Charitable Trust
Food Industry Crusade Against Hunger
Giant Food
\$5,000-\$9,999
Catherine J. McGinnis Family Foundation
Community Foundation of Northern VA
Charles and Joy Holland
Katherine Ann Krasovec
Jeffrey R. and Mary C. Long
Martin Family Foundation
Mountain Baptist Church
Daniel E. and Jeanne E. Porter
Robert Powell
Douglas and Sharon Rose
Jonathan R. and Amy F. Stehn
H. Wayne Sulfridge
Tri-State Nissan

\$2,500-\$4,999
American Truck Historical Society
American Woodmark Foundation
Diane M. Baddar
Gary McGraw and Amy Barley
Claudie E. and Sally B. Bowen
Bernard D. and Marion Brown
Bernard E. and Betty L. Ford
MLM Charitable Foundation
Mohr Information Services, Inc.
William and Lois Reynolds
Jeffrey and Shelley Taylor
Gregory A. Vick
\$1,000-\$2,499
Charles T. Akre
Cyril and Jean Barch
David Becker
Berryville Presbyterian Church
Christopher M. and Jennifer M. Boner
Col. John C. and Iva J. Bordeaux
Robert F. and Genevieve Boxley
Fred Brady
Dennis G. and Helen M. Brew
Harry F. Byrd, Jr.
Susan K. Campbell
Stephen D. Carlin
James E. Carr
Cedar Creek Valley Ruritan
Chestnut Grove United Methodist Church
CIS Secure Computing
Clarco Corporation
Steven and Terri Cluss
Columbus Foundation
Cowperwood FEMA, LLC

Virginia Cox
J. D. Curry
Lawrence and Bonnie Dalling
Barry and Caryn Danoff
Jerry and Wendy David
Jeffrey A. Delano
Mary F. and Joseph G. Dezarn, Sr.
Mark and Sarah Donaldson
Ivan Doseff
James B. Dunmire
Emma May Ridgeway Charitable Trust
Fellowship Bible Church
Terry and Elizabeth Fields
First Data Foundation
Elizabeth H. Frazey
Frazier Family Foundation
Mary Alice Giarda
Golden Girls, LLC
Walter K. and Shirley J. Handy
Elizabeth T. Herbert
Judi D. Hunt
Bryan K. Johnson
Jeffrey E. and Pamela Harvey Johnson
Thomas K. Johnson
Kenneth B. Karhuse
Jack H. Kent
David E. and Patricia L. Kerns
Lois A. Kirkwood
Wolfgang and Mary E. Klaiber
Jo Ann Logan Larrick
John and Marjorie S. Lewis
Raymond C. and Joan M. Loehr
Mary G. Lovell
Barbara Birdsong and Andrew Malenki
Mario and Marie Manecchi

Nellie L. McCabe
Robert W. McCoy
Merlin Enterprises, Inc.
Kenneth C. Moore
Nancy L. and John F. Munro
Anthony and Annette Nader
Network for Good
Lloyd and Margaret Pabustan
Frank and Barbara Q. Perrini
Robert E. and Linda L. Peterson
Gregory S. Phillips
Russell and Patricia A. Ford Roegner
Hugh F. Sager
M. J. and Judith F. Salvino
George R. and Jeanne S. Schember
Norma Jean Sheets
Geraldine E. Sherwood
James J. Shine
Shoppers Food and Pharmacy
Maria A. Smith
Eric and Susan Spittle
Robert N. and Linda A. Stanzione
Sysco Corporation
Gary L. and Penelope C. Tidwell
Dan and Diane Tolley
Cynthia Walczak and James Tomlin
Ashley R. Tucker, III
Unitarian Universalist Church, Shenandoah Valley
United Way of the National Capital Area
Michael R. Wallace
Wayside Foundation for the Arts, Inc.
J. Valerie Wells
Lois M. and William E. Whitaker, Jr.
Richard E. Johns and Dennis R. Will
Windcrest Foundation
Windhover Foundation
\$500-\$999
Jonathan L. and Carol F. Adcock
James S. and Beverly P. Alexander
Garry and Judy Antler
Shumeet Baluja
Joseph W. and Sharon R. Bowman
Grace E. Brubaker
James F. Burke, Jr.
Elizabeth A. Butkus
Joseph J. and Denise Calabrese
CFC of Northern Shenandoah Valley
Ted Chapin
Jamie M. Clark
Denise Clayton
James W. and Nancy C. Colbert
Contact Corporation
Robert M. Cooley
Cornerstone Inspection Services, Inc.
William and Karen Crapo
R. Matthew and Jennifer A. Cromwell
Daniel W. Cross
Scott R. and Eleanor P. Derrickson
Peter Mullally and Ann L. Detrick
Robert E. Diebold

Timothy and Andria Donnelly
Robert G. and Patsy M. Dow
Kerstin Demko and Kenneth Duncan
Mary Shinall Edwards
Peter R. and Alice F. Eelman
William H. and Kathleen A. Ellithorpe
James E. and Roberta R. Etzel
Jeffrey S. and Beth Collins Evans
ExxonMobil Foundation
Farm Bureau of Shenandoah County
Frederic T. and Barbara R. Farra
Douglas B. and Judith A. Feaver
First Baptist Church-Friendship Class
Mariecken and Jeffrey Fowler
Gainesboro Ruritan Club
Henry L. Garrett, III
Nicholas W. and Shannon M. Gemma
C. R. and Marilyn F. Gillespie
William A. Glasgow
Malcolm Grazier
David and Deborah G. Gregory
Robert E. Grimes
Harold E. McCarty and Marlene M. Hahn
Joseph and Janet Hannah
Charles and Margie Harrison
Havilah Gold, LLC
Julian W. Haydon
Christopher and Karen Hearn
Michael D. and Julie L. Hendren
Karen Herendeen
Hilliard Chapel Assembly of God Church
Donald F. Hodson
Patrick Hoffman
Phyllis Holloway
Daniel E. Holzemer
Hostelley Associates Inc.
Mary L. House
Brenda J. Hull
M. Dennis Wharton and Lisa Ingram
James R. Iritani
Nils and Beth Jespersen
Dennis H. and Patricia Johnson
Robert H. Kies
Llewellyn and Donna Kitchin
Theresa Lawrence
Ruth E. LeDane
Edward I. and Donna N. Lee
Dr. Patricia Duncan Leinbach
Jeffrey and Colleen Long
Earle A. and Glenna Mackenzie
Gail A. Marcotte
Jesse and Amie Matheson
Daniel Mayer
Gerald and Paula McNichols
Eva L. Mikhail
R. Phillip and Sara T. Mitchell
Modal, Inc.
Mountain View United Methodist Church
Nathan and Ruth Habib Foundation, Inc.

2010 DONORS

Northern VA Relic Hunters Assoc.

Edward F. and Beth A. Novak

Aime R. Page

Ronald W. and Hallie M. Place

Andrew G. Podolak

Donald C. Poppke

David and Vickie Propst

Mark D. and Megan C. Pugh

Robert L. Quesinberry, III

Daniel L. and Rita F. Rafferty

Theodore S. Reid

Ann Cecil Renick

Robert and Sandra Renzi

Nicholas Reybrock

Lisa Richard

John F. and Barbara J. Ripley

Rex E. and Helen J. Ritchie

John S. Rotz

Charles D. and Patricia S. Rzeszut

Philip S. and Laverne W. Sargent

Walter and Dawn M. Seligman

Eleanor D. Shirley

Robert and Vivian Skalsky

Donald E. and Rosemary Slawson

Smartnet, Inc.

Carol and Richard D. Smedley, Jr.

John H. Spencer

St. Jacobs Lutheran Church

James S. and Kim D. Stevenson

Hunter Stewart

Strasburg Presbyterian Church

Dennis R. and Cathy J. Stuter

Sullivan Group LLC

Sullivan Mechanical Contractors, Inc.

Marilyn A. Taylor

Joel L. and Catherine Thompson

Tri-Tek Engineering, Inc.

Joe Urbanski

Stephen and Cheryl Ward

Marie Wells

Lloyd R. West

Daniel E. and Jacqueline F. White

Douglas and Bronwyn White

David E. and Sue Ellis Wildt

Raymond and Maryann Wills

Winchester Radiologist

J. Jeffrey York

Yount, Hyde and Barbour, P.C. Staff

Linda C. Zawacki

\$250-\$499

Thomas B. and Kristen N. Adams

Rita Weyant and Thomas Adinolfi

Jon A. and Nancy J. Anderson

Bradley M. and Rhonda M. Arehart

William T. Armstrong, Sr.

William H. and Nicole G. Atwill

Glen R. Baker

Jeffrey G. and Sharon A. Ball

Ellen L. Barr

Nate Battaglia

Rebecca and Frank P. Beam, III

Kelly D. and Julie M. Belin

James G. Biddle

David and Rebecca Ann Booth

Gary J. and Nancy S. Braswell

Joan Parker Breidenbach

Colleen Daly and Kenneth Bresnahan

Stephen A. and Nancy G. Brown

Mildred Brumback

David E. and Tera M. Caldwell

Jane M. Campbell

Edward A. Carlson

Robert W. and Donna Y. Carmical

Mairead M. Carr

James and Barbara Chapman

Lynn E. and Deborah A. Chapman

Harano E. and Margaret M. Childs

Steven K. and Karen M. Chilton

R. W. Christy

David S. and Beth H. Clarke

George O. and Mary L. Coates

E.J. Cohen

Henry P. and Linda Coleman

Larry F. Collis

Janis L. Creekmore

Dale Cross

Cliff and Urve Crowder

Roy and Patti Dahnke

J. Timothy Dalke

Millicent C. and Sylvester Daughtry, Jr.

Philip and Eun Sil Davenport

Clark and Heather Davis

I.W. and Mildred S. Diehl

David Dillon

William H. and Hedwig R. Doores

John K. and Robin A. Dorsey

Robert and Leda Duck

Roger Duggan

John F. and Sharon A. Echaniz

Francine J. and Joseph J. Eglin, Jr.

Albert Elsea

Daniel and Cindy Elsea

Linda Day Evans

Murray J. and Sandra M. Farr

Clifford and Christine Fegert

John Flowers

Brian J. and Denise S. Fontaine

Lawrence D. Forbes

Judith M. Forsythe

Edward B. and Marguerite O. Foster

Jane Frakes

Frank Mangano Foundation

Delaney S. and Marca K. Frazier

Richard E. and Anna E. Funkhouser

David W. Ganse

Mary K. Garlock

Arthur H. Gehly, Jr.

Gary B. and Susan G. Gilliam

Natalie R. Goad

Donald Gochnauer

Lester A. and Arleen M. Goodman

Kenneth W. Grandstaff

Paula R. Gravatt

Gravel Springs Lutheran Church

Mark G. Gundersen

James and Michele Hackney

Ted W. and Janet L. Hagen

L. H. and Andrea S. Harkness

Axel Harres

David K. Harry

Youngmin Hart

Don E. Harvey

Jeffrey and Jamie Hedges

Ruth A. Hensley

John H. Hickerson

Michael and Natalie Hickey

Mark R. Hindle

Ebrahim Baradaran Hosseini

Richard H. and Susan Hunt

Samuel E. Ingram

Mrs. Chester H. Johnson

F.E. and M.B. Johnston

Raymond M. Kackley

Louis and Linda Kaiser

James J. and Clara M. Kelley

Jonathan and Dawn Kelly

David W. and Deborah S. Kidd

Sandra Kielsgard

Douglas E. and Linda P. Kinney

William J. and Denise M. Klein

David J. and Barbara A. Klierer

Robert L. and Teresa A. Knerr

R. B. and Sharon J. Kocak

Brian and Amy Kolcum

Carroll E. and Susan M. Koller

Robert E. Kopczenski

Robert H. and Prascilla L. Kotter

Judy Marie and Michael A. Lamana

Alan L. Landrum

Lawrence J. Langer

Ilse A. Larkin

Alberta G. Larson

David A. Lastafka

D.P. Hill and Elizabeth Leffel

William T. and Suzanne S. Liggett

D. Michael Liskey

Mark S. and Teresa S. Lloyd

Louis A. Luciano

Daniel J. Maier

Charles and Pamela Martello

Stephen H. and Linda M. Martenson

Anthony J. and Susan Marx

Massanutten Antique Tractor/Gas. Eng. Club

Bruce R. and Valetta V. McClinton

Kenneth L. McCloud

John Timothy McCommon

Peter Alvarez and Sharon McGroder

Mark Allan McNerney

Edward and Katherine McKay

Robert and Stephanie McKenney

Leander A.C. and Mary Ellen McMillen

John W. and Janet F. Monroe

John and Susan Moseman

Dennis D. Mosher

Ward E. Myers, III

John M. O'Brien

Michael T. and Noel G. O'Brien

Gene T. and Christina Elliffe Odum

Lisa M. Oliver

Michael D. and Helen M. Oliver

Karen and Frank O'Saben

Jack L. and Carole E. Ottenheimer

Elizabeth Pajor

Martin L. Palmer

Lecia A. Parker

Ruth D. Parker

Mary E. Parks

Jack Parrack

Thomas and Martha C. Perelli

Michael Pfannenstiel

Margaret E. Polk

Ralph and Janice Polk

Debra M. Potter

Bradley J. and Elizabeth Farley Quin

John M. Ramey

David A. and Joyce C. Ray

David and Bette Reynolds

John H. and Jane S. Rhodes

Donald and Sherry Richardson

Eric Rickard

Paul M. and Patricia P. Ritenour

Robert M. and Betty B. Rose

Warren A. and Sandra R. Ruefer

Patrick and Linda Ryan

Kathleen Mellon Ryman

Larry A. and Linda K. Ryman
Nelson D. and Mary A. Sager
Saumsville Christian Church
Leo J. and Jennifer C. Schefer
Louis and Lynde Scheffer
Carol Schelble
Gregory S. and Kathleen S. Schlaich
Glenn and Sandra Schleede
Leonard and Sally Schrade
Frederick W. and Faye L. See
Kevin A. Semon
Mark Anthony and Suzanne
Katherine Serway
Linda L. Sheffield
Shentel Foundation
Sang E. Shim
Christopher and Diane Shipe
Gretchen Ward and Allen Shofe
David G. and Cathy Shore
Robert and Elizabeth Skala
Dennis Skoff
Roy D. Smith
Lisa K. Spalding
David C. and Madalene C. Steed
Debbie and Carl Steffen, Jr.
Steven H. and Elizabeth A. Steinberg
William H. and Regina D. Stiles
Stonewall District Ruritan
Dale and Roberta Streyle
Jana Surdi
Linda W. Swanson
Jayne L. Sweet
Tracy A. and Jacklyn L. Taff
Kenneth B. and Lucinda J. Mann
Tenney
C. Marshall and Virginia R. Thompson
John S. Tiedemann
Michael J. and Ann Q. Tydings

Richard C. and Patrice G. Vossler
Cary Vucinich
Christopher B. Warner
Blake H. and Rebecca G. Watts
S.R. and J.A. Weatherford
Steven L. and Elizabeth Bles Webber
Mark L. and Gail S. Welch, MD
Barbara A. White
Christopher and Jeannine Willey
James S. and Carol B. Williams
Jeffrey B. Wright
Karen M. York
Melissa A. Young
Donald L. and Barbara J.
Zimmerman
Zimmerman Group, Inc.

In Memoriam

Sue Andrews
Kathleen Atkinson
Wayne Coffman
The Coopers
Dan Couch
Elise Courtney
Page Crabill
A. E. Dabney
R. O. Deavers
Mildred Denny
Roy Dodson
Eugenia and Joseph Dolansky
Phyllis Edwards
Arlene Eick
Frances Elsea
Catherine Estep
Iris Figgers
Robert Figgers
James Fletcher
Philip Gore

Doniphan Guay
David Hall
Archer Hansen
Betty Henry
Roger Hill
Leonard Hollar
Gene Homes
Kathleen Huffman
Agatha Jana
Eirik Jespersen
Myron Johnson
Helen and Charles Ketterman, Sr.
Karma Kitty
Kae LaRoche
Gail Lewis
Robert Lilly
Lucille Luciano
Priscilla Mann
Daniel McGillicuddy
Jack and Virginia Middleton
Ralph Mowry
Rupert Mulhearn
Elaine Patterson
Charles and Christina Podolak
Chester Polk
Lou Powell
Nancy Reed
Ronnie Reedy
Kay Rose
Mary Rose
William Schmidt
David Seaver
Frank Skoff
Anne Smith
Henrietta Smith
Henry Snead
John Stewart

Patricia Stoughton
Skylar Wahl
Wayne Weatherholtz
Deborah Webb
Herman Windsor, Jr.
Mr. Wolfe
Kurt Zimmerman

Thomas Jefferson Area

\$10,000 +

Austin Foundation, Inc.
Better Living, Inc.
Bio-Cat, Inc.
Charlottesville Area Community
Foundation
Farkas Family Foundation
Barbara J. Fried
GE Foundation Matching Gifts
Center
Genan Foundation
Grace D. Riggs Trust
Alyssa Humphreys
I. J. and Hilda M. Breeden
Foundation
IA Woodson Charitable Trust
J and E Berkley Foundation
MLG Foundation
Prayer Partners

\$5,000-\$9,999

Charles L. Keith and Clara S. Miller
Foundation
Charlottesville Ten Miler
Cheryl Anne De Angelis
Sarah P. Hendley
Mark and Lisa Johnson
Gerald L. and Mary Dionne Long
Bruce and Allison MacDonald
Robert W. and Laura McAuley

Morgan Stanley Smith Barney
GIFT Inc.
Susan and Michael Myers
Steven M. and Autumn B. Powell
Jim and Caroline Satira
Thomas and Mary Jane Timmerman
Chester R. and Margaret A. Titus
Theresa Z. Torian
Jack and Carol Weber
Whitney and Anne Stone Foundation

\$2,500-\$4,999

Raymond Tindel and Gretel
Braidwood
Bernard T. Bress
Harry Carmitchel
Rebecca T. Craig
Darden School Student Association
Fidelity Charitable Gift Fund
Fuller Foundation
GE Volunteers of Charlottesville
Great Eastern Management Co.
Happy Cook
Inez Duff Bishop Trust
Bobby and Dawn Jenkins
Kevin S. and Gabriela Lee
Olivet Presbyterian Church
Martha W. Olson
Susan M. Prindle
Second Harvest Food Bank of
Metrolina
Adam J. Soroka
South Garden Baptist Church
Rachel Tricker
Robert S. Turner, II
David S. Walker, Jr.
Craig and Pamela Wiese
\$1,000-\$2,499
Aberdeen Barn Charlottesville, Inc.

Abrahamse and Company
Builders, Inc.
Reid B. and Michelle Willis Adams
Peter V. Albano
Thomas T. and Elizabeth A. Allan
Anna M. Allen
Alvin L. Anderson
Russell and Jody Applegate
Marsha H. Ayres
Nancy and John J. Badoud, Jr.
Allen L. and Sharon P. Barker
Roland E. Baskette, Jr.
BB & T
Walter and Carol Bochnik
James C. and Barbara E. Boyd
David Braze
W. Grant and Judith H. Brownrigg
Cal Financial Group
Capital Group Companies
Robert S. and Rosemarie Capon
Charlottesville Church of the
Brethren
Charlottesville Lioness/Lions Club
Church of Our Saviour Episcopal
Gregory T. and Mary Ann Coleman
Virginia R. Coleman
Robert M. and Eileen M. Conroy
John A. and Kim L. Conway
Christa D. Cosner
Robert W. Covert
Joey F. and Brenda E. Crider
W. Edgar Spigle and Susan W.
Davenport
John V. Demaso

2010 DONORS

Angeline Lillard and William Detmer
Dixed LLC
Diversified Intelligence Svcs., LLC
Douglas A. and Doanne W. Dodd
Emanuel Baptist Church
Estate of Dorothy Gustin
First Presbyterian Church/
Charlottesville
Gerald R. and Mary D. Fletcher
Flohr Family Foundation
Richard and Barbara Fontaine
Jeffrey C. and Kay W. Fracher
Friends of the Jefferson Madison
Library
James M. and Jill H. Garnett
Douglas P. Gernert
Scott and Tarpley Gillespie
George T. and Melanie B. Gillies
Green Olive Tree, Inc.
Dedrea A. Greer
Grelen Nursery, Inc.
E. Clarke Haley, Jr., M.D.
John Harris
Mark M. and Mary Ann Harris
Stephen W. and Linda W. Hill
Jack S. Hirsch, MD
John and Joyce Holloway
Dorianne Boudreau and W. Paul
Huddleston
Laura Michael and Robert Hughes
Huntly Foundation
James M. and Judith B. Jaeger
James M. and Valerie A. Jessup
Duane and Mary Jane Johnson

Frank Daniels Jones, D.D.S.
Joan A. Jones
James G. and Anne W. Kavanaugh
Marta M. Keane
Emily Williams Kelly
Brian H. and Barbara T. Kennedy
M. Betty Ketron
Dwight E. and Patricia R. Kibler
L.E.A.W. Family Foundation Inc.
John Lanham, MD
LexisNexis Cares Employee
Foundation
George H. and Marilee Lindbeck
Glenn and Leslie Luxenberg
John and Patricia Mariska
Nathaniel and Joan B. Martin
Martin Luther King, Jr. Fund
John H. and Peggy P. Mason
Matthew Bender and Co., Inc.
Joseph W. May
M. R. McIntire
Michael McKee and Susan Ketron
John F. McLaughlin
Monica R. Milisits
Amalia R. Miller
Kinne J. Hoffman and Christopher
Milner
Hosea L. Mitchell
E. C. Montgomery
Monticello Animal Hospital
LeRoi Moore Fund
Virginia C. Morris
Morris Family Foundation
Jeff B. Moyers
MSMIT Class of 2011
Mt. Calvary Baptist Church
Ann E. Muir
Susanna Nicholson

Northrop Grumman
Christine Gresser and Seth Oldham
Peter S. and Kristin K. Onuf
Origio Humagen Pipets, Inc.
Georgene B. Palacky
Presbytery of the James
Patricia Mountain Price
Barbara B. Rich
Raymond Richards
Jeffrey T. and Christine F. Riley
Timothy Higgins and Kyra B. Ritter
Roy Wheeler Realty Co
John L. and Annette M. Ruggiero
Frederick Schauer
Anthony E. Scaperlanda and Mary
S. Schriber
Karen J. Schwenzer, M.D.
Elizabeth Scott
Ronald G. and Sandra M.
Sensabaugh
Ann S. and Hubert A. Shaffer, Jr.
William L. Sibley
Judith M. Simpson
Slate Mills Baptist Church
Gregory Slater
Hunter J. Smith
Suzanne H. and Mahon T. Smith, III
Robert T. Rood and Martha E. Snell
Sojourners United Church of Christ
Gordon L. and Ellen S. Spencer
St. Mark Lutheran Church
StellarOne
William A. and Eileen M. Stephens
Strain Foundation
Cindy A. Strickland
Stultz Foundation
Virginia P. Collier and Wayne P.
Thomas

Thomas Jefferson Lion's Club
Robert M. and Karen M. Thompson
Michele E. and Joseph S. Troutman
Anne R. Tufts
United Way Thomas Jefferson Area
Lowell C. Vaught
VBA School of Bank Management
Ventana
Ted and Linda Verhagen
Karen E. Walker
Charles and Louise Ward
Paul and Cindy Waslyn
Watterson Foundation
Steven Weaver
Mary Lee Webb
Geoffrey and Martha Weiss
Samuel A. Green and Judith M.
White
Nancy I. Whitman
John and Judith Wickens
Wyss Foundation
Robert E. Ziegler
Larry Zippin and Gretchen Gehrett
Wendy Zomparelli
\$500-\$999
Julia James Abell
John Clark Adams, Jr.
Albemarle Ruritan Club
Anna M. Day Foundation
Jonathan H. C. and Deborah J. Atkins
Jean L. Bagby
E. Gray Baird
G. Richard and Linda Barr
Michelle S. Barr, MD
Battlefield Farms, Inc.
John C. and Katherine I. Beard
Thomas F. Beddow

William and Glenna Benner
Edward H. and Nancy C. Bertram
Mayada K. Besancon
Betsy and Alan Cohn Foundation
Katherine M. Bevacqua
Richard L. and Diana S. Beyer
Blue Ridge Equine Clinic, Inc.
Blue Ridge ESOP Assoc.
Boar's Head Inn
Peter L. Boatner
Bodo's Bagels Store No. 1
Gordon M. Braden
Sharon Meth and Nicholas Brandt
Cliff and Judy Braun
Mary J. Bridle
David R. and Delores R. Brush
Alan Aqualino and Sandra Lieu
Bryant
Lawrence R. Burwell, MD
C and O Restaurant
Cafe Del Sol, LLC
Edith Cardwell
Cardio Concepts
Ruth O. Carmines
Christopher and Jeanne Carter
Steven L. and Sally T. Carter
Michael A. and Irene A. Cernik
John Chapman
Charlottesville Foursquare Church
Charlottesville Investment Club
Michele Claibourn
Scott B. and Teresa H. Clements
C. Hunter and Meghan Cloud
Comics for a Cause
Dora R. Conway
Barbara M. Cornejo
James M. Cothran

Courtney S. and Patricia D. Craft
Crofton Plaza II
Claire R. Cronmiller
Thomas I. Crowell
John A. and Barbara Cruickshank
Eduard E. and Francesca De Lange
Louise M. and John C. Dean
John M. and Cynthia H. Dent
John Stephen and Victoria Dibbern
Jacqueline R. Dodge
Christopher and Linda Duska
ECHO of Northrop Grumman
Ellen and Jason Eckford, Jr.
Margaret W. Edwards
Robert A. Eiserman
Elks Lodge #389
Robert L. and Helen Lee Ellison
Janet L. and Edward J. Ervin, III
Walter J. and Julie P. Farrell
John and Karen Finke
Lauren J. and Susan H. Fleischmann
Flori-Bunda Consultants DBA
Jane B. Foster
Richard S. and Mary Lou Fowler
Florence Bryan Fowlkes
Marjorie Garmey
Quentin L. Ghele
John Giuffrida
Kim Baxter Goodman
John B. and Beatrix W. Gordon
Grace Episcopal Church
Gene G. Greer
Andre Hakes
Peter and Karen Ham
Jack A. and Ann A. Hamner
Richard Handler
Jerry and Masako Haney

Robert and Sandra Haney
Ruth S. Hanft
Kenneth E. Hankins
M. Roy and Ellen S. Harris
Harris Teeter
Cynthia A. Hasler
Susan L. Hazelrig
Henry J. Kaiser Foundation Matching Gifts Program
Pamila Herrington
Stephen and Louise Hill
Paul and Laura Hoffman
Barry Penn and Jayne Penn Hollar
Julie R. Homan
Terrill C. and Mary Melinda Hope
Horse and Hound Gastropub
Fred Carey, II and Madeline M. Horton
W. Nathaniel and Margie S. Howell
Albert and Jeanne S. Huber
Karen S. and Festus Hudson, III
Donald Hunt
Tony and Lara Ignaczak
Lawrence and Roussie Jacksina
James and Amy Jackson
Hans U. Jahn
Scott and Cynthia Jamison
Jeweler's Eye
Rita B. and Walter R. Johnson
James L. Jones, Jr.
Jason and Constance Kapp
J. Arthur and Kate B. Kessler, Jr.
Keswick Corporation
Karen and Robert Kimmel, Jr.
Pauline L. LeBlanc
Peter-John and Camilyn Leone
Hallie A. Lillard

Robert J. and Joyce H. Long
Edward and Carolyn Lowry
Kristen A. Atkins and Jason A. Lyman
James M. Manzi
Peter Sevcik and Mary F. Martin
E. Broderick and Perrie H. May
Maya Restaurant
Mary E. and David J. McCarthy, Jr.
Marcia J. McDuffie
Lisa McPherson
Melting Pot Charlottesville
Richard A. and Elizabeth D. Merrill
Douglas and Marjorie Miller
John F. and Carolyn E. Miller
Robert and Norma Moore
Dahne B. and Walter E. Morgan, III
Elmer and Deborah Morris
Wayne H. Morris
Munson Associates LLC
Matthew B. and Mary P. Y. Murray
National Philanthropic Trust
Steven A. Newman
Fay Norton
Omni Charlottesville Hotel
Pat and Buddy Omohundro
Stephen and Laura Parr
David L. and Helen P. Parrish
Robert H. Perkins, Jr.
Charles A. and Clara Joy Perry
Carolyn R. and John R. Pflug, Jr.
Piedmont Valley Community College
John and Tracy Pomerleau
Precision Builders, LLC
Larry J. Sabato, Ph.D.
Patrik and Cheryl Sandas
Frank T. and Janet Saulsbury

Adele S. Schaefer
Becky and Allison Scholl
Kevin Schuyler
Jack M. Sherley
James and Nancy Shipp
Michael R. Sinclair
Diane W. and Michael J. Solatka
Richard and Natalie Somer
Daphne Spain
Spekman Associates
Elena Squitieri
Richard L. and Margaret F. Stavitski
Bill and Lois Stewart
Arthur and Victoria Stow
Thomas M. and Nancy Louise Strassburg
Henry B. and Antoinette W. Suydam
Claire M. Tieder
Stoner Tracy
Transition Finance Strategies LLC
George and Judith Truesdail
April H. McNulty and Bruce E. Tucker
United Way of Greater Richmond and Petersburg
Cyndra H. and Alan S. Van Clief
Michael and Heather Vanderweide
Richard H. and Nelda B. Vaughan
Virginia Association of Realtors
Chris and Patricia Walters
David and Julie Walters
Stephen K. and Patricia H. White
M. Lyndon Whitmore
Williams Companies, Inc.
John V. Pepper and Elizabeth A. Wittner
Reg and Kathie Woods

\$250-\$499
Sherrie D. Albrecht
M. Elizabeth Allen
Timothy J. and Teresa B. Allison
William Holet and Nancy Armstrong
F. Michael and Marilyn G. Ashby
James E. and Patricia B. Atkinson
Robert Kirk Ax
James H. and Sherry K. Aylor
Brian R. Bader
Michael J. and Martha C. Balfour
Thomas F. and Pamela B. Ball
Quail Song and Judy Bancroft
Mary L. Barker
James R. and Margaret Shupnik Barrett
David H. and Nancy K. Bass
Martin C. and Ruthe R. Battestin
Larry E. and Rebecca M. Batton
BB & T
Dave and Barb Bell
Anne P. Benham
James G. and Donna T. Bennett
Martha V. Bevier
Milton and Carol Blackwood
Blue Light Grill and Raw Bar
Boathouse of Charlottesville, LLC
Katha Bollfrass
Liza Borches
Thomas and Judith Boyd
Deborah A. Bremer
Margaret Brennan
Michael and Robyn Bristow
Mr. and Mrs. Guy Larry Brown
Cheryl C. Brunk
Brian E. and Andrea J. Bunce
Paul and Angela Buskey

Camino Partners, LLC
Carmello's of Charlottesville, Inc.
Mrs. Monika K. and Hamilton Carothers
Martha Stahr Carpenter
Susan C. Carr
J. D. Carter
Robert Charles and D. Jeannean Carver
Cassis, SKL, Inc.
Cattail Creek Antique, LLC
Charlottesville Friends Meeting
J. Ford Childress
Kay C. Chretien
Herbert C. and Frances P. Christoferson
S. Joy Claibourn
William B. Quandt and Helena Cobban
Terry M. Coffey
Emilio and Denise Collado
Gerald H. and Katherine J. Collins
James and Christine Connell
Brian P. and Gwyn Conway
Philip and Carol Cooper
Bodil Cornell
Suzanne Cranford
Elizabeth M. Cranmer
Charles Crawford
Thomas and Cecelia Cropley
Robert H. and Anne P. Crow
Hugh and Ruth Ann Crowder
Crutchfield Corporation
Leighton H. Cumming
Cassandra A. Cunningham
Vincent C. Dale
William L. and Janice B. Dalton

Duncan and Billie Daugherty
Karen G. Davenport
Joseph E. and Monica S. Davis
John T. Delehanty
Daniel Foltz and Susan Dimagno
Jeffrey A. Divers
DMV Employees Association
Elliott N. Weiss and Janet L. Dorman
Daniel B. and Cathy Pillion Dorsey
Woodrow and Frances Dowell
Andrew J. and R. Bernice Dracopoli
Sallie Duehring
Marvin and Marlene Dunivan
Margaret T. Dunn
Deborah Ann El
Nicholee Sue Elder
John S. and Betty W. Elliton
Betty and H. Kelly Eppard
D. James Firster and Susan J. Erno
Roy and Margery Farner
Michael and Dorothy Farrish
James Fergus
FICO
John E. and Rose B. Finn
Edwin Linn Rushia and Christine Fleckles
Ernest A. and Wendy R. W. Flynn
Robert H. Forsyth
Charles D. Fox, IV
Thomas W. Stewart and Gerri L. Frantz
Otavio R. and Cassandra Freire
Tobe and Leora Friedberg

2010 DONORS

F-Stop Studios
 Stephen W. and Virginia Gardner
 Claire W. Gargalli
 E. Wayne and Susan S. Garnett
 Frances H. and Bruce Garwood, Jr.
 Karl and Susan Gass
 Paul and Mary Gaston
 Gastronauts, Inc./Zinc
 Florence Geyer
 Andrea Owen Gilmer
 Ted and Lisa Glass
 Robin and Bobby Goodall
 Goodman, Allen and Filetti, P.LLC
 Ilar B. and Carter E. Graves
 James Graves
 Peter and Heather Griffith
 Walter B. and Jane Griffith
 Ned K. and Heidi C. Gumble
 John F. Hallstead
 D.L. Halterman
 Steven and Carol Ham
 William M. and Christine J. Haney
 A.H. and J. B. Harris
 Bruce P. and Karen M. Hayden
 Carl and Patricia Headland
 David H. and Linda B. Hendon
 John F. and Mitzie M. Herberg
 Randall E. and Kathryn V. Hill
 Mary P. and E. D. Hirsch, Jr.
 Frederick P. and Mary Buford Hitz
 Eugene E. Hoffman
 LeBron J. and Kay D. Holden
 Harry and Sheila Holsinger

Christopher P. and Angela J. Holstege
 Alan P. Batson and Alice G. Howard
 Mary C. Huey
 James R. and Judith Hunt
 Anita Impagliazzo
 Brad and Dawn Jacobs
 Anupama Jain
 Genevieve D. Jennings
 Joseph L. Jennings, III
 Charles P. Jones
 Harry K. Jowers
 John and Phyllis A. Kattwinkel
 Robert and Jeanne Keller
 Lucie S. Kelly
 Jerry R. and Deborah K. Kem
 Robert G. Kennedy
 Paul H. and Elizabeth F. Kippes
 Steven and Carol Krohn
 Aleksander and Carleen Kupcis
 Kevin and Dawn M. Kusy
 Lucinda R. Lally
 James Shea and Brenda Lambert
 Nicholas R. and Kathleen C. Lang
 Edgar and Sheila Lawson
 Gregg T. Lehman
 L'Etoile Restaurant
 Yvonne R. LeVeque
 Raymond J. and Susan R. Lindsay
 Lohr and Company, LLC
 Joseph W. Lotts, Jr.
 Allyson C. Louthan
 Jay B. Maben
 William J. Maloney, MD
 Cri Kars-Marshall and Jack Marshall
 Lawrence J. and Lynn W. Martin
 Martin N. Davidson Consulting

Nancy L. Martinson
 Valerie A. Matthews
 Jeffrey A. Maurer
 Mary McCabe
 Anthony McCall
 Catherine I. and Eugene D. McGahren, III
 Andrew L. Meade
 Daniel John and Mary Lewis Bowen Meador
 Sidney M. and Carol B. Milkis
 Patricia and R. James Miller, III
 Virginia C. and Benjamin M. Miller, Jr.
 F. Seillier and Julian Moiseiwitsch
 Gregory R. Moon
 Frank and Mary Morgan
 Ann Williams Murray
 Murray School
 Emily Nelson
 John D. and Margaret L. Newell
 Christine R. Oakley
 Patricia Taylor and William S. O'Brien
 Tom and Genevieve Obrig
 David and Jean Oelrich
 Gary and Rosemary Oxford
 Mary Lou Pagano
 William and Ursula Palmer
 F. Troost and Kathryn B. Parker
 Ruth H. Parsons
 Theophilus and Margaret Parsons
 Bijal and Hiral Patel
 Beale Payne
 Louise and E. Williams Pelton, II
 Ruth T. Penn
 Lavinia Pretz Phillips
 Frederick S. and Judy S. Pierce, II
 Lewis and Matilda Purnell

J. Michael McMahan and Katherine Ralston
 Rebecca E. Rapp
 Edward E. and Donna S. Rehorn
 Velma A. Reichle
 John W. and Donna M. Renard
 N. Dickon and Christine M. Reppucci
 Daniel and Leslie Richard
 Hans Olav and Anna Greta Riddervold
 Lori Roberts
 Paul S. and Cynthia Roberts
 Benjamin S. and Deborah S. Rose
 John W. and Carolyn J. Rosenblum
 Gilbert S., M.D. and Joyce I. Ross
 Robert and Denise Rucinski
 Jeanne S. Runkle
 Helen H. Sagendorf
 V. Jacqueline Schelling
 Bruce D. and Geri E. Schirmer
 Robert C. Schoonover
 Carla K. Scouten
 Carolyn L. Seaholm
 Glen and Lorraine Seitz
 R. Keith and Teresa W. Shaner
 John Shannon
 Alfred Shapero
 Arthur and Karen Sherwood
 Charles J. and Guadalupe Shields
 Linda Tinder Sigmon
 Joseph W. and Annette Z. Silver
 Roland H. Simon
 Robert C. and Marilyn L. Simpson
 Timothy and Mary Beth Slagle
 Edward and Anne Slaughter
 Smith and Robertson, Inc.
 Lois D. Snead

Snead Foundation
 Anne C. Snyder
 Jack B. and Joan E. Sorensen
 Alicia and Richard Souder, Jr.
 Joan T. Sours
 Charles and Carrie Souter
 Southern States
 St. Isidore The Farmer Catholic Church
 John A. and Grace M. Stillwell
 Philip F. Stokes
 Dorothy L. Stone
 Charles G. and Eleanor J. Sudduth
 Joe Sudduth
 Melissa W. Sysling
 Douglas M. and May S. Taylor
 Karen C. Taylor
 Mrs. John E. Teel
 The Dokuns
 Jarriette and Glenn Thebert
 Arthur L. and Helen W. Thiele
 Gary and Margaret Timmons
 Patrick H. Tolan
 Cheryl Graybush and Steven S. Trostle
 Michael F. and Lynda H. Tubridy
 U. G. and Alice P. Turner
 Peter Arnold and Anne Ruth Ungar
 UVA Bookstore
 Vivace
 Walter J. and Ruth H. Wadlington
 Scott and Tammy Walk
 Edmund M. and Patricia S. Waller
 Karen Melcher and Douglas Wanamaker
 David B. and Elizabeth B. Waters
 Laurence R. Watson
 Alexander James Wead

Stephen A. Weinhardt
 Carol A. and Dean T. Wenger
 Brinson and Donna White
 David H. and Kathleen W. White
 Murray and Mary Beth Whitehill
 Lacy T. Whitmore, Jr.
 Mark G. and Marla K. Whittenburg
 Robert Whitworth
 David and Mary Wiecking
 William Jobs and Associates, Ltd.
 Herbert R. Williams
 Mr. and Mrs. George W. Williams
 Thomas E. and Jeanine G. Wolanski
 Guy and Patience Wood
 James L. Woodson
 Elizabeth and George F. Wooten, Jr.
 Marigail Wynne
 Steve A. and Teresa A. Yelton
 Richard K. and Stephanie L. Zacour
 Mary Ann Zook

In Memoriam

Kathleen Atkinson
 Blanche Bacon
 Carlyle Barton, Jr.
 Harold Bishop
 Paul Blanc
 Frances Blanch
 James and Virginia Blythe
 John Brennan
 Grace Brightbill
 Bob Brown
 William Brown
 Ramona Burwell
 Gerry Butterfield
 the Comptons
 Richard Cornell
 Paul Crane

Ryda Cusack
R. O. Deavers
Richard DiRoma
Elizabeth Dodson
Robert Figgers
Adriel Freddie
David Garland
John Garland
Ruth Godbold
Will and Ruth Godbold
Michael Goldfinger
Dorothy and Bruce Gustin
David Gerald Hall
Bill Honkins
Manny Howe
Charlotte Kampe
Jim and Doris Lamb
Joseph Leahy
Brian Lee
Margaret Leveque
Arnold Liebman
Billie Maben
Kenneth Markiewicz
Nancy McConnell
Lottie McCowan
Robert Meccanello
Alomia Moore
Ralph Mowry
Ruth Nelson
Charles Newhouse
John O'Neil
Barbara Onuf
Connie Palladino
S. Parvatham
Clifford Pauley
Carlos and Bonnie Peck

H. Clay Penn, Jr.
Peggy Perkins
Margaret Ray
Dennis Russo
Fred Scarlata
Bill Schilling
James Scott
Paula Selbert
Jean Sinclair
John Sisson
Emma Jean Snyder
Elizabeth Southall
Dr. James Stone
Patricia Stoughton
Patty Stoughton
Kitty Stroud
Peggy Sydnor
Shelby Taylor
Kyle Thomas
James Towe
Dorothy Townsend
David Tricker
Lillian VanDerveer
Penelope Weiss
P. J. White
Phyllis Whitmore
James Williams
Fred and Charley

Lynchburg Area

\$10,000 +
Edgar A. Thurman Charitable
Foundation
Gleaning for the World, Inc.
\$5,000-\$9,999
Credit Unions Care Foundation of
Virginia

Grainger Foundation
Patricia Harrington
Walmart Store #4697
Wendy's of Western Virginia, Inc.
\$2,500-\$4,999
Richard and Rebecca Dufour
Genworth Financial
Kroger #377
Madeline Center
\$1,000-\$2,499
Amherst Woman's Club, Inc.
Ralph R. Andrews
Press and Eugena Barnhill
Robert K. and Sherry Y. Bell
Gary C. and Kathy L. Brown
John A. and Leslie Burgess
Richard A. Carrington, III
Chestnut Hill United Methodist
Church
County of Frederick VA
Nancy L. Dirom
Dodson Brothers Exterminating
Co., Inc.
E. C. Glass High School
Elena and Alan Edwards
James Fauber
First Dominion Home Health Care
First Presbyterian Church/Lynchburg
Greater Lynchburg Community Trust
Greif - Riverville Mill Plant
William E. and Jeanette E. Grimes
Regina H. Hammer
Laurie S. and Phillip C. Harris
Harris Foundation
Heritage High School
Russell R. and Janet G. Hooper
Royce and Kathleen Husted

Michael and Bonita Kinnaird
KVA Foundation
Maurice C. Law
Lewis G. Schaeneman, Jr. Foundation
Janet L. Rose and Murray M.
Lumpkin
Jerry D. and Bonnie W. Mayberry
Greg S. and Dianna B. McGann
James C. and Molly M. Nelson
Margaret P. C. Nelson
Cynthia W. and Frederick C. Ochsner, III
Seema K. Patel
Personal Homecare, Inc.
David W. Porterfield, Jr.
Warner and Mary Pruitt
Juanita Roberson
Brian and Anita Satterlee
Seven Hills Coins and Jewelry
StarTek
T. C. Cooper Construction, LLC
Robert R. Torian
Daniel S. Warsing
Paul and Maureen Webb
\$500-\$999
American National
Associated General Contractors
Central District
Craig and Corinne Bailey
Mark and Nancy Balchik
Dale E. and Linda F. Bell
Laurie Bishop
John W. Bittinger
Michael Bolt
C. L. Lewis and Co., Inc.
Gary and Linda Camp
Campbell County Schools
Campbell Insurance

Paul R. and Lisa K. Carpenter
Central Baptist Church
Beverly Clark, Jr.
Robert E. and Elaine B. Clarke
Clifford Baptist Church
Ralph L. and Doris L. Coffing
R. M. and Lois Coward
T. Peyton and Carol B. Coyner
Creation Appreciation, LLC
Shirley K. Crehore
Daniel R. and Martha F. Davis
Dayton Merchants Association
Henry H. Dennis
Diamond Hill Presbyterian Church
Electronic Design and Manufacturing Co.
Judy M. Floyd
FTG, Inc.
Paul F. and Ruth K. Gorman
David and Susan Gring
Robert A. and Suzanne P. Hahn
H. Marshall Hamilton
William A. Hobbs, M.D.
Philip M. and Julie R. Hoge
Michael E. Holman
Joyce L. Huerta
Joseph P. Hurley
George C. and Linda K. Jessen
Robert and Mary Johnson
Rebecca Jane Lindsay
Mary E. and Richard G. Long, Jr.
Lynchburg Wholesale Floral Corp.
Sarah P. McBratney
Frances L. McWilliams
Dawn Metz
Edward and Martha Misker
Montague-Betts Company

Mary L. Murray
N. B. Handy Company
William J. Neubauer
Christopher and Marianne O'Brien
Patmos United Methodist Church
Merlyn and Betty Proehl
Quaker Memorial Missions Giving
Retail Merchants Foundation
Ms. Estell R. Ripley
John B. and Laura H. Robertson
Ruri-Teen Wilson Memorial HS
Chapter
Gretchen H. Del Duca and William
San Soucie
Karen A. and Samuel L. Skillman, III
Dennis M. Sterne
Union Baptist Church
Glenn B. Updike
Valley Fasteners of Lynchburg, Inc.
Ika Joiner and Dale Weigel
Bartley S. and Yvette I. Wilson
Women's Club of Lynchburg
Alan and Trudy Wood
WXLK K92 Radio, Wheeler
Broadcasting
\$250-\$499
Edgar L. and Helen M. Abrell
Ruth A. Agnor
Charles H. and Elaine Anderson
Diana L. Anderson
Vaughn D. and Melinda M. Arthur
Alistair Bahar
Banker Steel Company L.L.C.

2010 DONORS

Thomas S. Beckham
Believers Fellowship
Barbara A. Bluck
Ellen N. Bouton
Marianne C. and Robert H. Branch, Jr.
Charles E. Broadwater
Mr. and Mrs. James E. Brookshire
Brookville High School
Brown Living Trust
Mary E. Butz
Richard G. and Elsie R. Byrne
Terry and Janet Chalker
Steven H. Clarke
Alice and R.V. Coleman, Jr.
William A. and Ann E. Coulter
Charles and Charlotte Crawley
Cub Scout Pack 43
Evelynn M. Culver
Mary Jane and Charles E. Davis, Jr.
Brian J. and Linda T. Delano
Diamond Hill Baptist Church
Kenneth E. Edgley
Edward L. and Marilyn H. Embrey
Kenneth C. Ewing
William B. Fadeley
Johnny and Shirley M. Ford
Carolyn Foster
David W. and Judith Lee Frantz
David A. and Susan M. Freer
Sharon Deborah Friedman
John R. and Joyce S. Garrett
Paul and Nannie L. Gates
Genworth Foundation

Dr. Richard and Linda Giles
Elizabeth O'H Gillam
Veronica M. and H. Raymond Glover, III
Elden W. and Patricia W. Gordon
Grace Church of God
Grace Memorial Episcopal Church
Kevin and Suzanne Graczyk
Gregory D. Green
John A. and Dawn C. Greenough
J. Brian and Laura M. Hall
Mark W. Hamilton
Mary P. Hare
Catherine P. Haskins
Alice S. Headley
James R. and Judy S. Hengerer
Hewlett-Packard Company
James S. and Geraldine F. Hopper
Gregory M. Propp and Kathryn L. Jarvis
John and Lillian Jones
Lawrence C. and Susan H. Kaslo
George and Stephanie Keebler
Gerald I. and Donna C. Kerley
L.P. and Patricia C. King
Mrs. Thomas S. Kirkpatrick, Jr.
Diane C. Kyle
Kevin S. and Judy J. Lareau
Judith Jo Linenfelser
Lynchburg Garage Door
Lynchburg Ready Mix Concrete Co., Inc.
Madison Heights Christian Church
Warren C. Martin
Robert E. Mason
Paul J. and Theresa E. McCarthy
Mt. Zion United Methodist Church
Daniel and Jean Myers
Andie Nasby

Anne S. Nash
Russel and Wendy Overstreet
Corey and Elaine Passman
Peakland Baptist Church
Sara C. Pentecost
Franklin and Wilma Phelps
Ajay B. and Heather J. Pillai
John and Sandra Plummer
Quaker Memorial Presbyterian Church
Dr. Robert Bass and Dr. Moira Rafferty
James S. Redmond, Jr., M.D.
Glenn F. and Patricia M. Robinson
Patricia Sandquist
George R. Zippel and Suzanne E. Schuerman
William W. Seay
Marvin and Nancy Sehn
Helen Crabb Seline, M.D.
Shepherd and Jennifer Anders
Sittason
Dinah C. and Rudy D. Small, Jr.
Michael A. and Danielle R. Speranza
St. George Greek Orthodox Church
Peter M. and Susan E. Strubhar
Rodney L. and Janice H. Suddith
Daniel and Evelyn Taylor, III
Gregory L. and Corey D. Taylor
Jean D. and H. B. Thompson, Jr.
Virginia Dixon Tucker
Helen M. Tuthill
United Way of Central Virginia, Inc.
D. L. and Patsy C. Warren
O. Victor and Anita Weatherholt
Gary L. Weatherly
Eugene Wilder
Florence Wilder

Bailey G. and Betty P. Wilkins
Mazie C. Wilson
Fred L. Wood
Sue D. and J.R. Worsham, III
In Memoriam
Marie Berry
Ralph Breeding
Bob Brown
Spencer Clark
Ken Davis
Mary Davis
Mr. and Mrs. DeLeon
Carol Dillon
Dr. William Driskill
Burgess Duncan
Marshall Ebert
Iris Figgers
Elaine Fisher
Richard Foster
Charles Friedman
Durward Frye
Gizmo Garrett
Jane Hardy
Ellen Hylton
William Johnson, Jr.
Robbie Lacy
Marie Lee
A.W. Lewis
Gail Lewis
Reginald Lewis
Arnold Little
Clayton Markham
Glenn Ophelia Martin
Joan Mast
Lillian Matherly
Mr. and Mrs. Harry McGann
Colin McNevin

Aubrey Mehaffey
Leah Meredith and Stewart L. Murray Meredith
Ronald Mistretta
Pat Mitchell, Jr.
Edith Morrisette
Charles Mowery
Ralph Mowry
loved ones
Sara Osteen
Edwin Page
Robert Penick
Douglas Potter
Michael Powers
Steve and Butch Roach
Jimmy Robbins
Otto Roberts
Bill and Gloria Shellenberger
Pat Shelor
Glenn Snyder
Carolyn Stewart
Hoyt Stewart
Earl Stinson
Mrs. W. A. Stuart
Edward and Mary Treni
Kay Ward
Jack Whitehead
Victor Winebarger
Gary Wolfe
Thomas Young, Sr.

Inkind Donors

Boston Beanery
Brown Exterminating Company
Charlottesville Radio Group
Dominion Virginia Power
Fire Protection Company

Giant Food Stores
Harris Teeter
Hurricane City Tees
Knox Refrigeration, Inc.
Kroger Mid-Atlantic
Mailing Services of Virginia
Signs USA
Sysco Food Services of Virginia, LLC
Target
WTGD 105.1

Food Donors 100lbs +

AAAA Storage
Abbott Nutrition
ACAC
Academy of Fine Arts
Advanced Manufacturing
Agnor Hurt Elementary School
Albemarle Baking Company
Albemarle County Bus Drivers
Albemarle High School
Aldersgate United Methodist Church
All Saints Episcopal Fellowship
All Saints Orthodox Church
Alliance Bible Church
Alpha Kappa Psi
Altavista Elementary School
Altha Grove Baptist Church
American Legion Post 74
Americold
Americold/Perdue Farms
Anderson's Country Market
Andrea Kittrell and Family
Aorn
Appalachian Freight Carriers
Ariake
Armour-Eckrich Meats, LLC

Ashbury United Methodist Church	Broadus Memorial Baptist Church	Churchville Library	Dayton Church of the Brethren	Farmland Foods	
ASR Retiree's Association	Brookville High School	CII Services	Dennis and Richard Will	FBI	
Atlanta Community Food Bank	Brookville Ruritan Club	Cintas	Department Of Agriculture	Federation of VA Food Banks	
Augusta County Library	Brownsville Elementary	Circle of Faith-Third Presbyterian Church	Department Of Environment	Fedex Freight	
Augusta Health	Burley School	Citifinancial	Department of Health Professionals	Feeding America	
Augusta Lions Club	Burris Refrigerated	Cives Steel Company	Department of Homeland Security	FEMA/DHS	
Augusta-Staunton Health Department	Bushmans Inc.	Clarence Jennings	Department of Rehabilitative Service	Ferguson Enterprises	
Avante at Lynchburg	Butler Transport	Clear Channel Radio	Deva and Craig Millward	First Bank and Trust	
BANA	CACI	Clear Springs Packing	Dick Meyers Crysler	First Baptist Church	
Barbara A. Harris	Cale Elementary School	Clearwaters Seafood Bistro	District 19 Masons	First Church of God	
Barren Ridge Church of the Brethren	Camp Wahoo	Coca Cola North America	Diversified Foods, Inc.	First Presbyterian Church	
Bass Elementary	Campus Kitchen UVA	Coldwell Banker/Funkhouser	Division of Child Support	Flamingo Food and Beverage, Inc.	
Bass-Hoover Elementary School	Capital Meats	Colonial Auto	Dixie Beverage Company	Food Bank of VA Peninsula	
Baugh Northeast Coop., Inc.	Cardinal Point Vineyards	Colonnades	Dollar General	Food Lion	
BB&T	Cargill	Columbia Fresh Produce	Domino's Pizza	Foods of All Nations	
Beale Memorial Presbyterian Church	Carmax	Commonwealth Supply Distribution	Doubletree Hotel	Fort Hill United Methodist	
Belk	Cedar Grove Church	ConAgra Grocery Products	Dr. Robert and Eric Stickle	Fran Albright	
Bender Warehouse	Cedar Grove United Methodist Church	Conner Produce Company, Inc.	Dupont Community Credit Union	Frank Farm	
Best Buy Distribution Center	Celebration Church of God	Consolidated Shoe Company	Earlsville Market	Frank Padilla	
Beta Sigma Phi Omega Master	Central Coke/Charlottesville	Continental Express	Eastern Mennonite University	Fredericksburg Area Food Bank	
Beth El Congregation	Central Elementary School	Costco	Edward Jones	Frontier Culture Museum	
Bethany Presbyterian Church	Central VA Food Bank	Cottonwood	Eldon Showalter	GE Fanuc Automation America	
Beulah Baptist Church	Century Link	Cove Presbyterian Church	Elon Ruritan Club	General Dynamics	
Big Apple Bagels	CFA Institute	Covenant Nursery School	Emmanuel Baptist Church	General Mills, Inc.	
Big Lots	C. Brown Christian Center	Covenant School	Emmanuel Church of the Brethren	General Mills Truck Delivery	
Big Sky Apartments	Chandlers Bakery	Covesville Presbyterian Church	Emmanuel Episcopal Church	Genworth	
Bimbo Bakery	Cheese Shop	CPC, Inc.	Enterprise Rent-A-Car	George's Food	
Bloom # 2719	Cherryvale United Methodist Church	Craigsville Elementary School	Essentials	Giant # 762	
Blue Ridge Community College	Cheryl Maggard	Crosby Trucking	Evan Showalter	Give Back 2 God	
Blue Ridge Stars	Chestnut Hill United Methodist Church	Crutchfield	Evington Ruritan Club	Glass and Metals, Inc.	
Bluegrass Series	Chipotle #1110	Cub Scouts Pack 333	Executive Limousine	Gleaning For the World	
Bob's Wheel Alignment	Christian Science Church	Cub Scouts Pack 48	Expoland	Glover United Methodist Church	
Body Care	Church of Jesus Christ Latter Day Saints	Curves	F.E.M.A	GLTC	
Bowman Apple Products Company	Church of the Holy Spirit	Daily Bread	Fairfield Presbyterian Church	Golden Living Center	
Boy Scout Drive	Church of the Nazarene	Daily Living Center	Family Dollar	Goodwill	
Bridgewater College		Darden Graduate School UVA	Farm Credit	Grace Christian School	
Bridgewater College Stuff the Bus		David Karnes	Farmer's Food	Grace Covenant Church	

Grace Memorial Episcopal Church
Great Valu
Green Valley Book Fair
Greenberry's
Greer Elementary
Grottoes Dollar General
Gwen and Les Rose
Gypsy Hill Park Tea Party
H P Hood
Hamer and Hamer
Hancock, Engel and Associates
Happy Cook
Harris Corporation
Harris Teeter #100
Harrisonburg Baptist Church
Harrisonburg Disc Golf Club
Harrisonburg Quota Club
Harrisonburg Seventh Day Adventist
Harvest Ridge Village
Health Information
Heritage Elementary School
Heritage Green Assisted Living
Hermitage Presbyterian Church
Hershey Chocolate USA
Hidden Pines
Hollymead Elementary School
Holy Cross Presbyterian Church
Honest Tea
Houff Transfer
Hunter McGuire School
Hunters for The Hungry
Hurt Moltey Ruritan Club
IGA

2010 DONORS

Immanuel Lutheran Church
Integral Natural Foods
Irvin Inc.
Ivy Commons Chiropractic
J. Crew
Jack and Jill Ice Cream Co.
James Wood High School
Jean Miller
Jean Travis
Jeanne Shannon
Jefferson Forest High School
Jefferson Poplar Forest
Jessy George
Jim Price Chevrolet
JMU
Joe Bean
John Lisky
Kegler's Lane
Kellogg
Kennameta, I Inc.
KFC
K-Mart
Kohls Distribution Center
Kraft General Foods
Kraft/Nabisco Biscuit
Kroger #228
Lambda Chi Alpha
Lessrit DeCampagne # 1126 F
Liberty High School
Linkhorne Elementary School
Lipsey Logistics
Lisa Herring

Little Ceasars
Local Food Hub
Logistic Care
Long and Foster
Lord Fairfax Community College
Lovingston IGA
Lynch Station Ruritan
Lynchburg Association of General Contractors
Lynchburg Chamber of Commerce
Lynchburg Church of Christ
Lynchburg College
Lynchburg Democratic Committee
Lynchburg General Hospital
Lynchburg Girl Scouts
Lynchburg Pulmonary Associates
Lynchburg Sheltered Industries
Madison Heights Ruritan Club
Madison House
Maison Athletic Training Students
Manhein Harrisonburg
Market Street Market
Martha Jefferson
Martins
Martins Home Furnishings
Mary Ann Rudolph
Mary Baldwin - Athletics
Mary Parker
Massanutten District Cub Scout
Matthew T. Kennedy
McCain Foods Inc.
McCoy's Furniture
McGuirewoods

McKee Foods
McKinley United Methodist Church
McSwain Elementary
Meriwether Lewis School
Michie Tavern
Ministers Wives and Widows
Mint Springs United Methodist Church
MKG, Inc.
Montana Plains
Montevideo Middle School FFA
Monticello High School
Moose Lodge No. 715
Morning Star Dairy
Mountaintop Christian Church
Mt. Alto Baptist Church
Mt. Bethel Baptist Church
Mt. Bethel Methodist Church
Mt. Horeb Presbyterian Church
Mt. Sidney United Methodist Church
Mt. Zion 1st African Baptist Church
Mt. Zion United Methodist Church
Murray High School
Music Today
Nancy Pruitt
Nano and Emerging Tech Club
NAPA Transportation
National Business College
Navy Federal
NBC 29 Food Drive
Neighbors-4-Neighbors
Nestle USA Truck Delivery
Nestle USA, Inc.

New Hope Baptist Church
New Hope United Methodist Church
Newcomers
No Limit Hair Designs
North River Soccer Club
Northern Illinois Food Bank
Northridge Community Church
Northrop Gruman Sperry Marine
Northside Lanes
Oakland School
Oakwood Country Club
OCAT, Inc.
Old Dominion Freight Line, Inc.
Old Dominion Job Corps
Olive Garden #1669
Olivet Presbyterian Church
Omni Hotel
Onyx Hill Fruit And Plants
P and K Services, LLC
Panera Bread
Pantops Physical Therapy
Patchwork Plus
Paul Frappollo
Paul Munro Elementary School
PBM Products
Peabody School
Peace Lutheran Church
Peak View Elementary
Pepperidge Farm
Pepsi Cola
Pepsi Cola Bottlers of Lynchburg
Perdue Farms, Inc.

Performance Bicycle Shop
Philabundance Foodbank
Pine Ridge Church
Pizza Hut
Polymer Group Inc.
Postal Carrier Food Drive
Powhatan School
Pragmatics, Inc.
Probation and Parole
Proctor and Gamble
Project Give
Project Hope
PT Plus
Public Defender Office
Purdy Brothers
PVCC Horticulture Club
Quaker Memorial Presbyterian Church
Quaker/Tropicana/Gatorade
Quintin and Donna Garber
Ralcorp Holdings, Inc.
Ray of Hope Church
Real Estate III Faulconer Office
Red Front Supermarket
Red Lobster
Red Robin Harvest Support Center
Red's Chips
Reid Market
Relay Foods
Ressie Jefferies
Rice and Rice, DDS
Richfood Truck Delivery
River Ridge Mall

Robert S. Payne Elementary School
Rockingham County Administrator
Rockingham Memorial Hospital
Rosetta Stone
Round Hill Ruritan Club
Route 11 Potato Chip Co.
Rugby Ave Church Of Christ
Safeway #1417
Salem Lutheran Church
Sams Club
Sarah Fitzgerald
Save a Life Outreach
SBM Site Services
Schenck Foods
Second Harvest Foodbank of Middle Tennessee
Second Presbyterian Church
Sedona
Seneca Foods Corporation
Senior Center, Inc.
Sharp Shopper
Shawnee Girl Scouts
Shawnee Ruritan Club
Sheetz
Shelburne Middle School Band
Shenandoah Heights Baptist Church
Shenandoah University
Shenandoah Valley Campground
Shenandoah's Pride Dairy
Shoppers
Sigma Alpha FOTA Fraternity
Simply Fresh Produce
SNL Financial

Society of St Andrews
Sojourners Church of Christ
Southern Cafe and Music Hall
Southern Rose Tattoo Co.
Southside Gleaning Network
Southwestern VA Food Bank
Spotswood Elementary School
Spring Hill Baptist Church
St Thomas More Catholic Church
St. Andrews United Church Of Christ
St. Barnabas Fellowship Church
St. John the Baptist Episcopal
St. John's Episcopal Church
St. John's Lutheran Church
St. John's -Pre-School
St. John's United Methodist Church
St. Maarten Cafe
St. Mark's Lutheran Church
Standard and Poor's
Starbucks
Startek
State Farm Insurance Co.
Status Solutions
Staunton Church of the Brethren
Staunton Coca Cola
Staunton Eagles FOE #680
Staunton Foods Inc.
Staunton Grace Covenant Church
Staunton Liberty Tax
Staunton Montessori Preschool
Staunton Public Library
Staunton Salvation Army

Stella Kyger
Stellar One
Stephen Ross
Stewart S. Gordan Middle School
Stone Robinson School
Stonewall District Ruritan Club
STTI Pi Mu Chapter-At-Large
Stuarts Draft Elementary School
Stuff-A-Truck
Sunkist Growers Truck Delivery
SuntTrust Bank-West Beverley
Sysco Food Service Of VA
T and R Processing
Take It Away
Tanzar Chiropractic
Target
Target Distribution Center
Telephone Pioneers
Texas Road House
The Amato Clinic
The Camp at Mosby Station
The Drive For 25
The Garden Patch
The Lollipop Shop
The Sole Source
The Summit
Timberlake Christian Church
Timberville Church of the Brethren
Tinkling Spring Presbyterian Church
Titus Transportation/Logistics
Tom Krebs
Toni Bowyer

Trinity Episcopal Church
Tucker Griffin Barnes, P.C
Tyson Foods
Tyson's Truck Delivery
UAW Retirees
United Bank
United States Senate Federal Credit Union
Unity Church
University Baptist Church
UVA Bookstore
UVA Center for Politics
UVA Chuck It for Charity
UVA Development
UVA Health System
UVA Human Resources
UVA Internal Audit Dept.
UVA McLeod Hall
UVA Medical Center
Human Resource
UVA Medical Lab
UVA Patient Financial Service
UVA School of Continued Professional Studies
UVA Vice President and Chief Informant
UVA Women's Center for Young Leaders
VA Good Sam—Youth
VA Laurete Chapter Beta Sigma
Valley Dance Theatre
Valley RC Flying Club
Van Wyk Inc.
Vector Industries

Verona Elementary School
Verstandig Broadcasting
Vicky Peterson
Villas at Stonemill
Virginia Employment Commission
Vision of Hope United Methodist Church
Volunteer Farm
Voortman Cookies
Vybe
Waldorf School
Walgreen's
Walker Middle School
Wal-Mart
Washington Gas
Wayne E. Bailey Produce Co.
Waynesboro East/Augusta Crop Walk
Waynesboro Liberty Tax
Waynesboro Public Library
Waynesboro Recycle Center
Waynesboro Senior Center
Waynesboro Seventh Day Adventist Church
Waynesboro Woman's Club
Waynesboro YMCA—SMAC
Wegmans #7
Weight Watchers
Wells Ice Cream Blue Bunny
Wendy's
West Main Street Discount Store
West Main Street Restaurant
Western State Hospital

Western-Veg Produce, Inc.
Westgate Apartments
Westminster Canterbury
Westover Dairy
Westwood Baptist
White Birch Community
White Wave
Whole Foods Market
Wholesome Foods, Inc.
WIC Health Department
Widows Sons Lodge #60
Wiley Wilson
Wilson Memorial High School
Wintergreen Rescue Squad
Wison Football League
Women In Nuclear
Woodforest Bank
Woodrow Wilson Lioness/Lions Club
Woodrow Wilson Rehab Center
Woodworth Animal Hospital
Workforce
World Market Cost Plus
Yoder's Country Market
Zepp Farm
Zion Union

June 30, 2010

ASSETS

Current Assets		
Cash and cash equivalents	\$	911,611
Accounts receivable, net		119,339
Inventory		1,801,616
Prepaid expenses		26,400
Total current assets	\$	2,858,966
Fixed assets, net of accumulated depreciation		1,386,063
Investments, at fair value		1,349,549
Total assets	\$	5,594,578

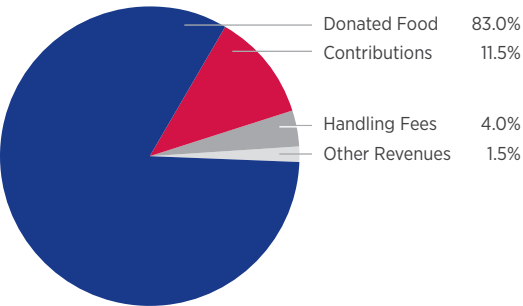
LIABILITIES AND NET ASSETS

Current Liabilities		
Accounts payable and accrued liabilities	\$	215,847
Accrued payroll and related liabilities		136,630
Compensated absences		61,681
Total Current Liabilities	\$	414,158
Net assets		
Unrestricted net assets		
Undesignated	\$	3,726,497
Designated—funds functioning as endowment		1,249,033
Total unrestricted net assets		4,975,530
Temporarily restricted net assets		204,890
Total net assets	\$	5,180,420
Total liabilities and net assets	\$	5,594,578

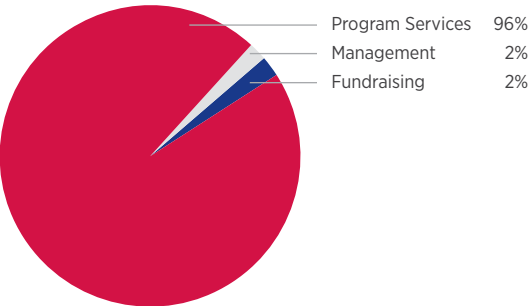
Fiscal Year Ended June 30, 2010

Revenues		
Public support		
Donated food	\$	26,035,640
Contributions		3,616,949
Handling fees, net		1,221,854
Other revenues		506,418
Total revenues	\$	31,380,861
Expenses		
Program services	\$	29,716,417
Management and general		613,022
Fundraising		573,615
Total expenses	\$	30,903,054
Change in net assets	\$	477,807

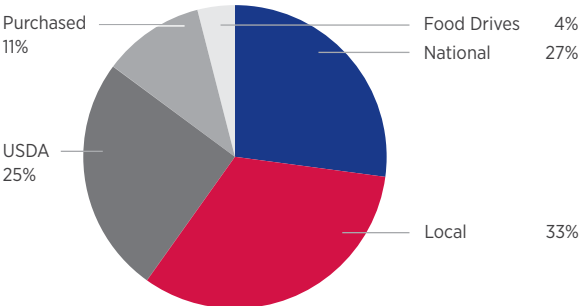
REVENUES AND SUPPORT



EXPENSES



SOURCES OF FOOD



Notes: Financials include the value of donated product. Donated product on hand at year-end is valued at the national wholesale value of one pound of food, as determined by the most recent study conducted by Feeding America. Donations and distributions of product are recorded at the weighted average wholesale value in effect during the year. The information in this summary was excerpted from our complete audited financial statements, which are available upon request.

2010–2011 Board of Directors

Susan M. Myers

Chairperson

Thomas Timmerman

Vice Chairman

John A. Downey

Secretary

Blue Ridge Community College,
Weyers Cave

Kenneth F. Newbold, Jr.

Immediate Past Chairman

Denise C. Clayton

Nextlink Wireless, Inc., Herndon

Michael Greller

Giant Foods, Charlottesville

Dawn M. Metz

Genworth Financial, Lynchburg

Peter A. Poirot

Peter A. Poirot CPA PC, Harrisonburg

David Smail

Retired, Sodexo Marriott, Staunton

Lawrence M. Zippin

Chief Executive Officer

Management Team

Lawrence M. Zippin

Chief Executive Officer

John E. Koehler

Chief Financial Officer

Michael McKee

Vice President

Planning & Development

Ronald Morris

Chief Operating Officer

Doron Samuel-Siegel

Director of Agency

Relations & Programs

WRITER AND EDITOR

RUTH JONES

Director of Communications

GRAPHIC DESIGN

MATT THOMAS DESIGN



Nourishing Hope for Thirty Years

PO BOX 937
VERONA, VA 24482

NON PROFIT ORG
U.S. POSTAGE
PAID
PERMIT 232
CHARLOTTESVILLE
VIRGINIA

BRANCH LOCATIONS

Shenandoah Valley Area Branch

Headquarters Office

PO Box 937
96 Laurel Hill Road
Verona, VA 24482-0937
P 540.248.3663
F 540.248.6410

Thomas Jefferson Area Branch

1207 Harris Street
PO Box 6415
Charlottesville, VA 22906-6415
P 434.296.3663
F 434.296.9621

Lynchburg Area Branch

501 12th Street, Suite B
PO Box 2272
Lynchburg, VA 24504-2527
P 434.845.4099
F 434.845.6153

Lord Fairfax Area Branch

1802 Roberts Street
PO Box 3142
Winchester, VA 22604-2342
P 540.665.0770
F 540.722.4217