

Consultants

Structural Engineer
Hollie Becker

Mechanical Engineer
Matthew Setzekorn

Electrical Engineer
Jim Stadelman

Aeronautic Specialist
David Aston

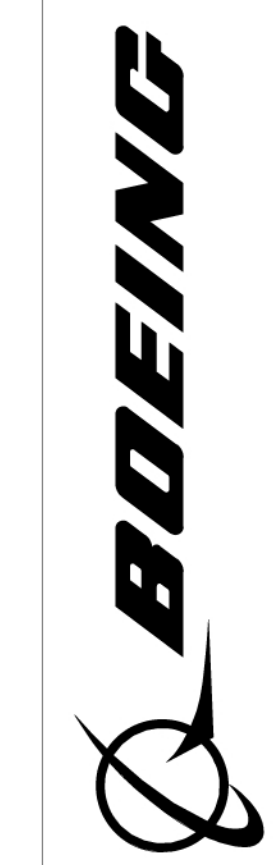
Contract Information

Forest City
Washington
1615 L Street NW,
Suite 400
Washington, DC
20036

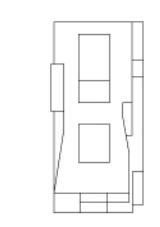
Phone: 202-406-6600
www.dcwashington.com

Kent State University
College of
Architecture &
Environmental Design

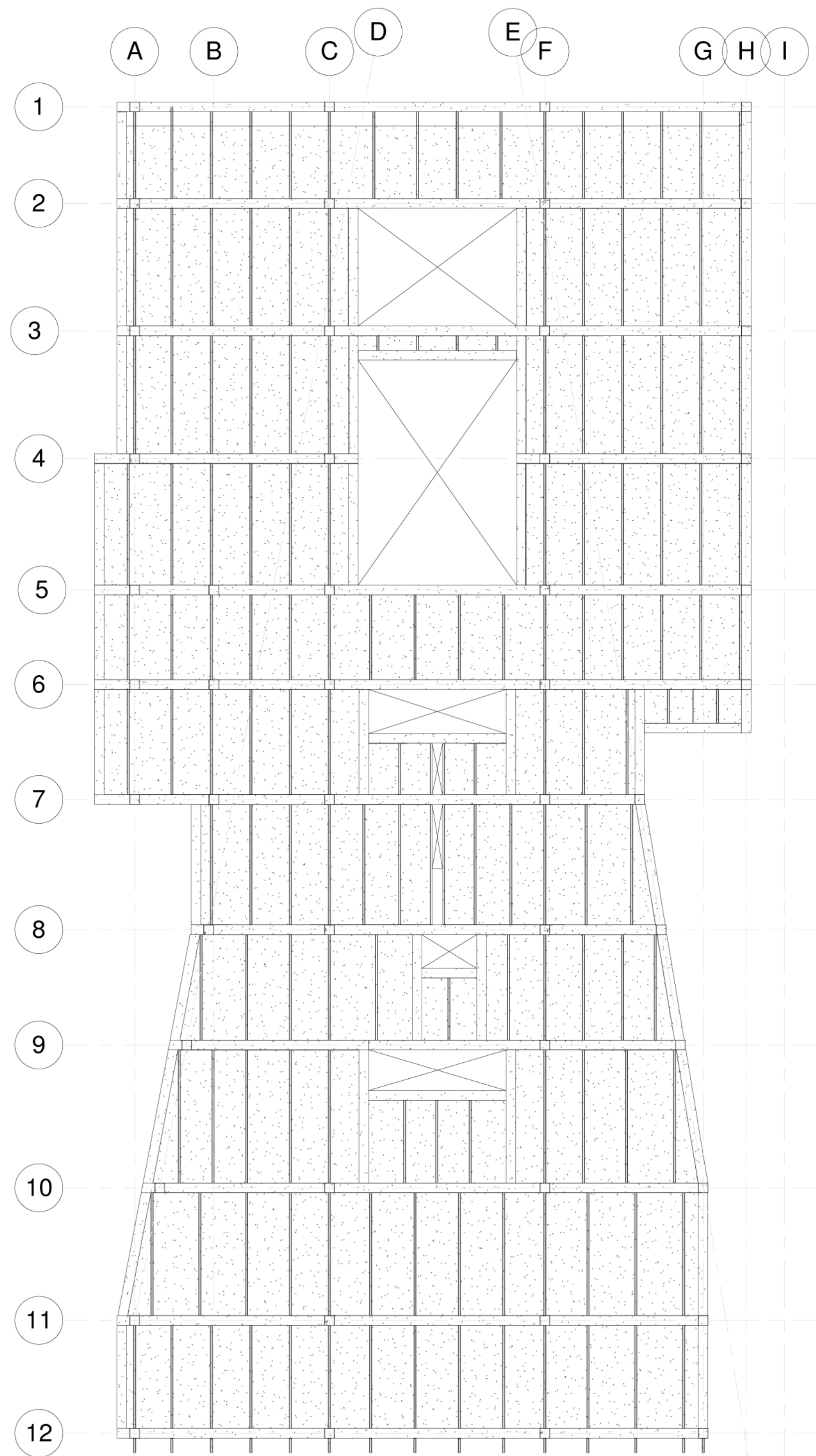
Client



Key Plan



Date: 3/6/2011
Drwn by: Travis Clarke
Chkd by: Harker
Sheet Title:
Framing Plan



Scale: 1/20"=1'
0 5 10 20 40

5th Level Framing Plan

