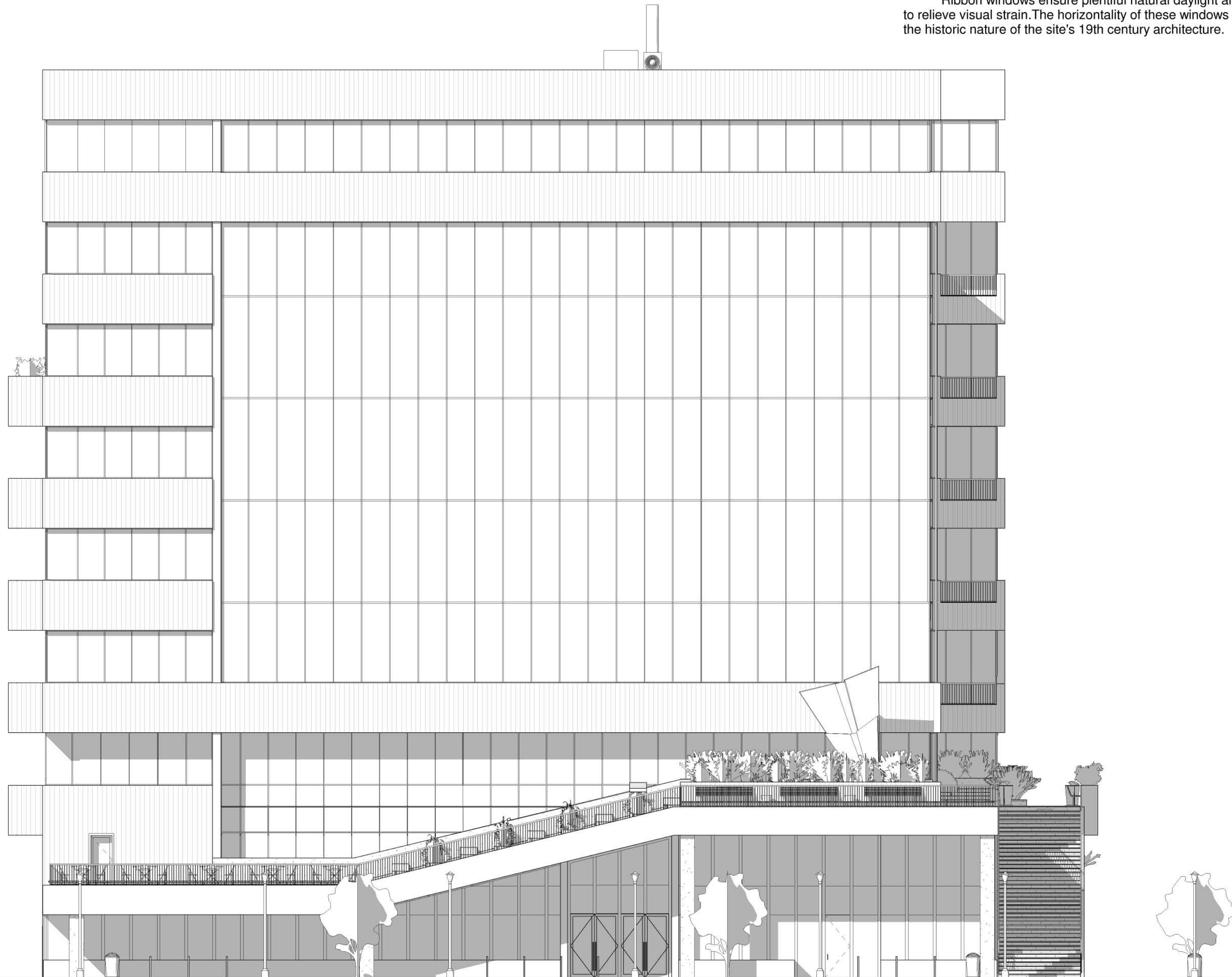


Design Strategy

The southern facade is the windward side during the warmer seasons. To utilize the southern sun and breeze, the southern facade is a double skin. The double skin uses the differences in pressure to pull air from the bottom opening in the facade through the innerstitial space of the skin. Operable hopper windows on the interior skin allow for passive cooling. Operable horizontal louvers help bounce light back into the office as well as shade the space and prevent it from overheating.

Ribbon windows ensure plentiful natural daylight and views to relieve visual strain. The horizontality of these windows relate to the historic nature of the site's 19th century architecture.



Scale: 3/32"=1'
0 2 4 8 12 20

South Elevation

CLARK ESPOSITO
ARCHITECTURE

Consultants

Structural Engineer
Holle Becker

Mechanical Engineer
Matthew Setzekorn

Electrical Engineer
Jim Stadelman

Aeronautic Specialist
David Aston

Contract Information

Forest City
Washington
1615 L Street NW,
Suite 400
Washington, DC
20036

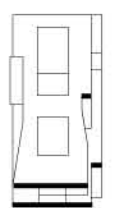
Phone: 202-406-6600
www.dcwashington.com

Kent State University
College of
Architecture &
Environmental Design

Client



Key Plan



Date: 3/6/2011
Drwn by: Travis Clarke
Chkd by: Harker
Sheet Title:
South Elevation

A-203