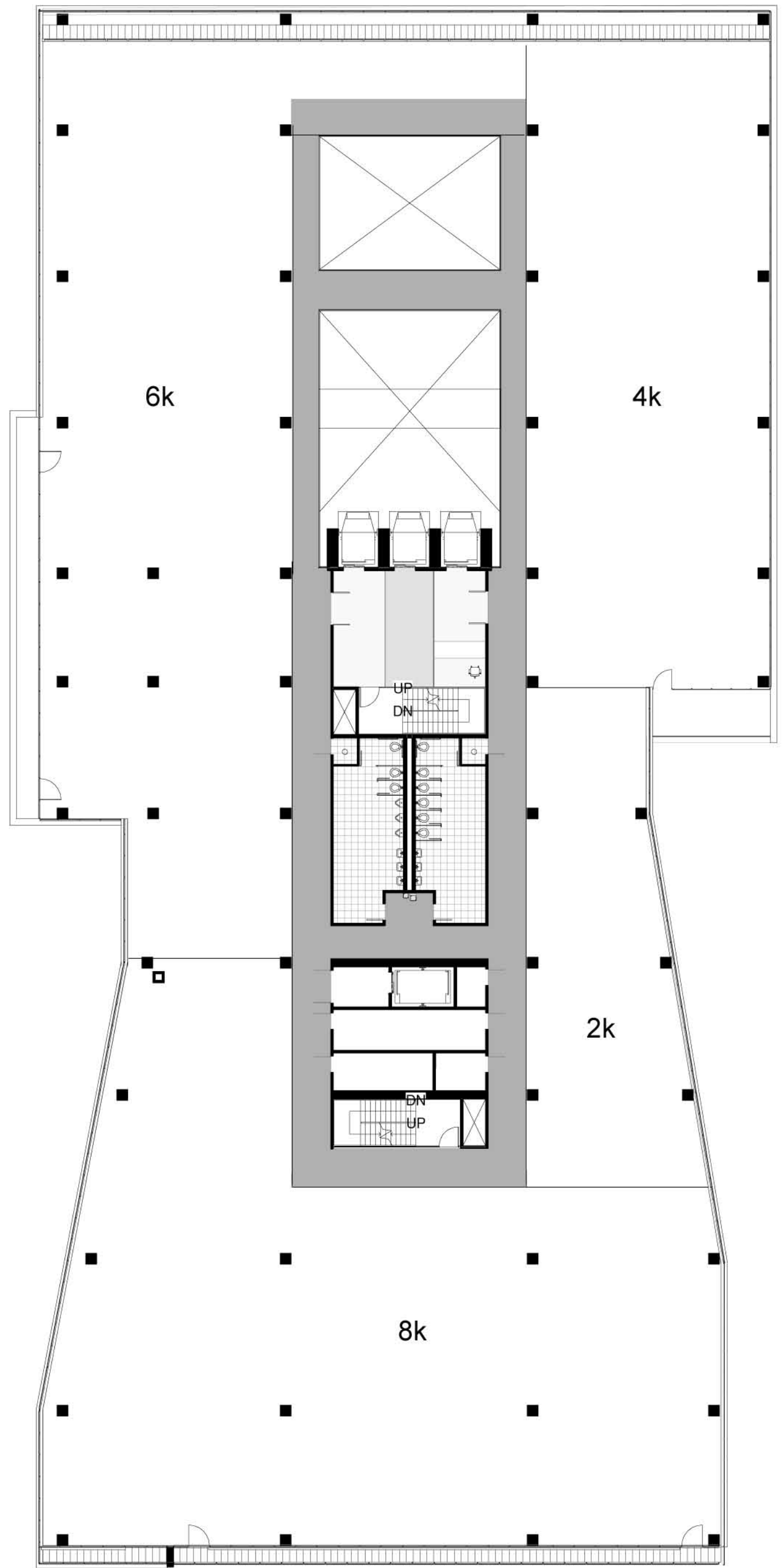
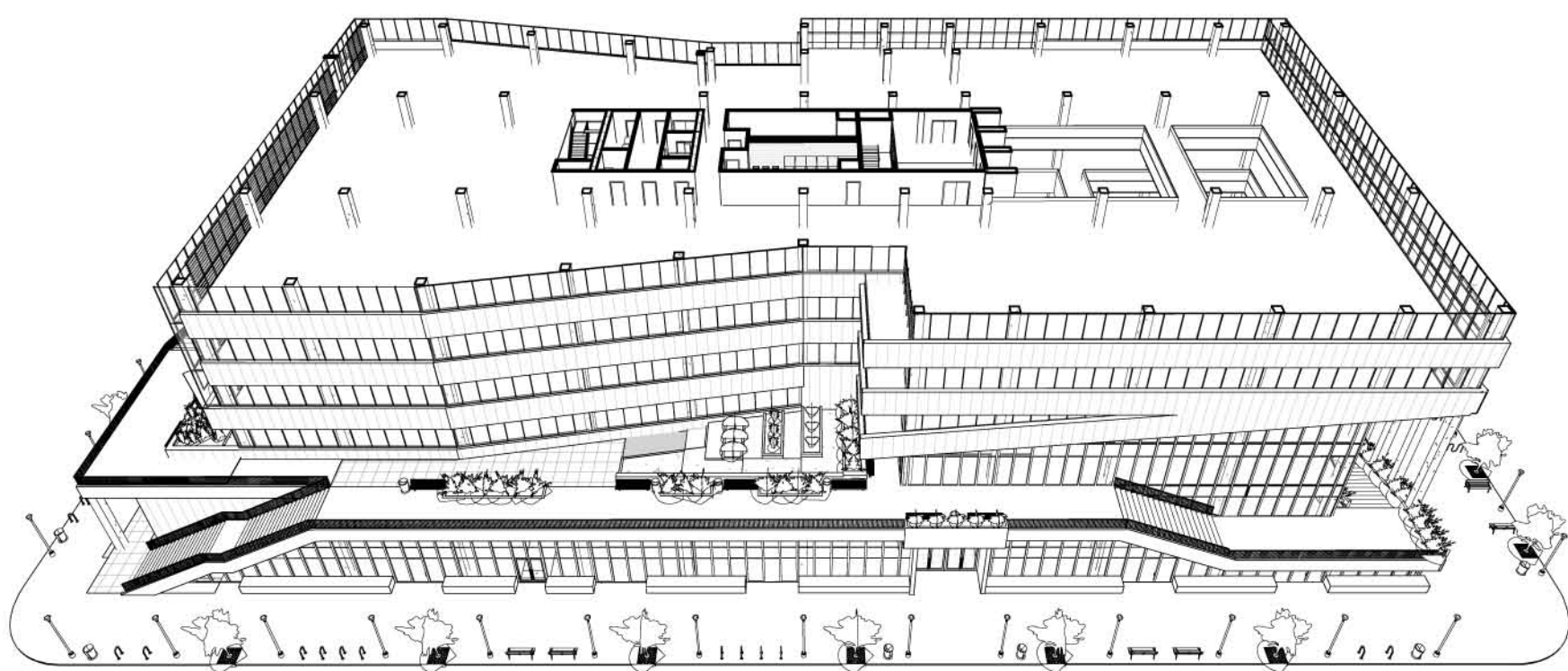


Areas

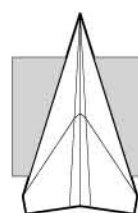
Space	Gross Area (sq ft)	Net Rentable (sq ft)
Prime Tenant Office	27,876	27,876
Atrium	25% of 2,374	0
Core	2,818	2,818
TOTALS	31,287	30,694

98% Efficient



Scale: 1/20"=1'
 0 5 10 20 40

Fifth Floor Plan



Consultants

Structural Engineer
Hollie Becker

Mechanical Engineer
Matthew Setzekorn

Electrical Engineer
Jim Stadelman

Aeronautic Specialist
David Aston

Contract Information

Forest City
Washington
1615 L Street NW,
Suite 400
Washington, DC
20036

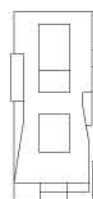
Phone: 202-406-6600
www.dcwashington.com

Kent State University
College of
Architecture &
Environmental Design

Client



Key Plan



Date: 3/6/2011
 Drwn by: Travis Clarke
 Chkd by: Harker
 Sheet Title:
 Floor Plans