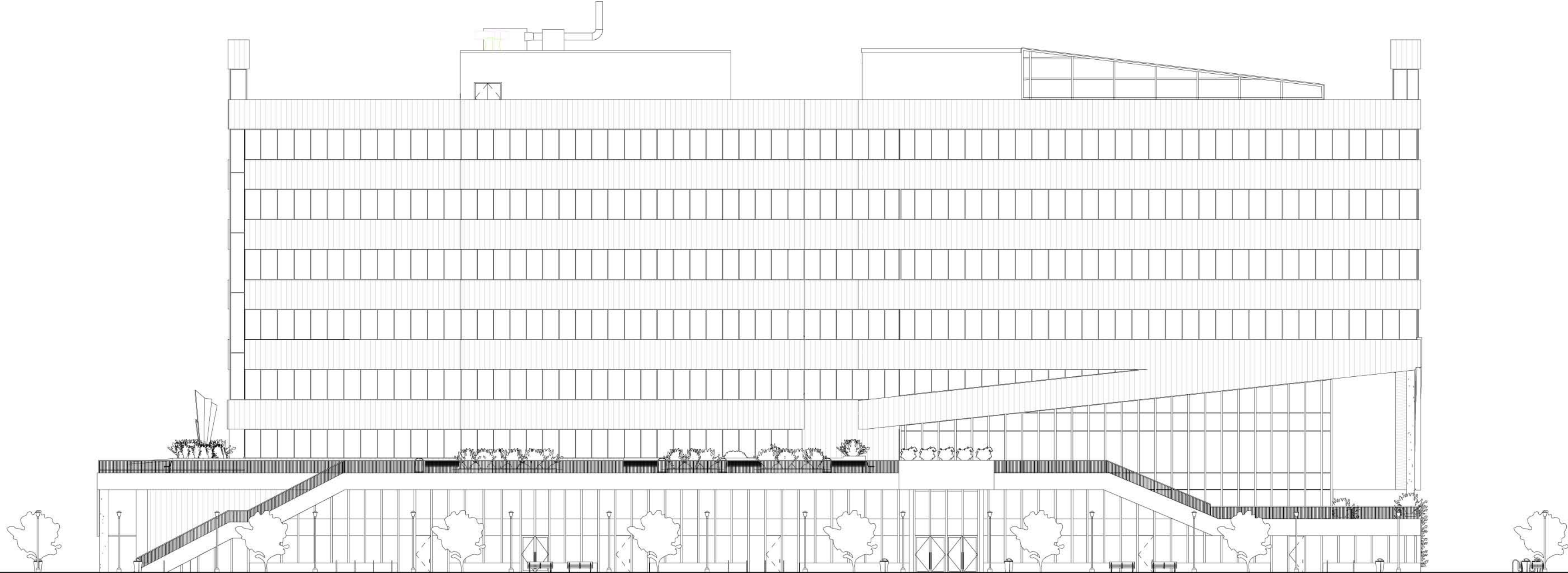


Design Strategy

The second level of the facade hosts a park adjacent to a trapeze school. This park acts as an extension to the yards park to the south. Retail lines the street underneath the park.

Ribbon windows ensure plentiful natural daylight and views to relieve visual strain. The horizontality of these windows relate to the historic nature of the site's 19th century architecture. Venetian blinds shield the office from eastern sun and provide privacy for second level spec tenants.

The floor plates cut inwards to reveal vertically stacked outdoor spaces and southern facing operable windows to provide natural ventilation.



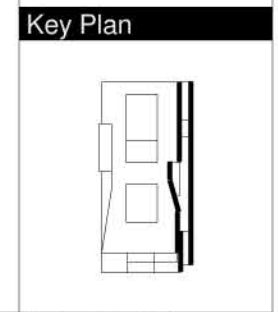
Scale: 1/20"=1'
 0 5 10 20 40

East Elevation

CLARK ESPOSITO
 ARCHITECTURE

Consultants
 Structural Engineer
 Hollee Becker
 Mechanical Engineer
 Matthew Setzekorn
 Electrical Engineer
 Jim Stadelman
 Aeronautic Specialist
 David Aston

Contract Information
 Forest City
 Washington
 1615 L Street NW,
 Suite 400
 Washington, DC
 20036
 Phone: 202-406-6600
 www.dcwashington.com
 Kent State University
 College of
 Architecture &
 Environmental Design



Date: 3/6/2011
 Drwn by: Travis Clarke
 Chkd by: Harker
 Sheet Title:
 Eastern Elevation

A-202