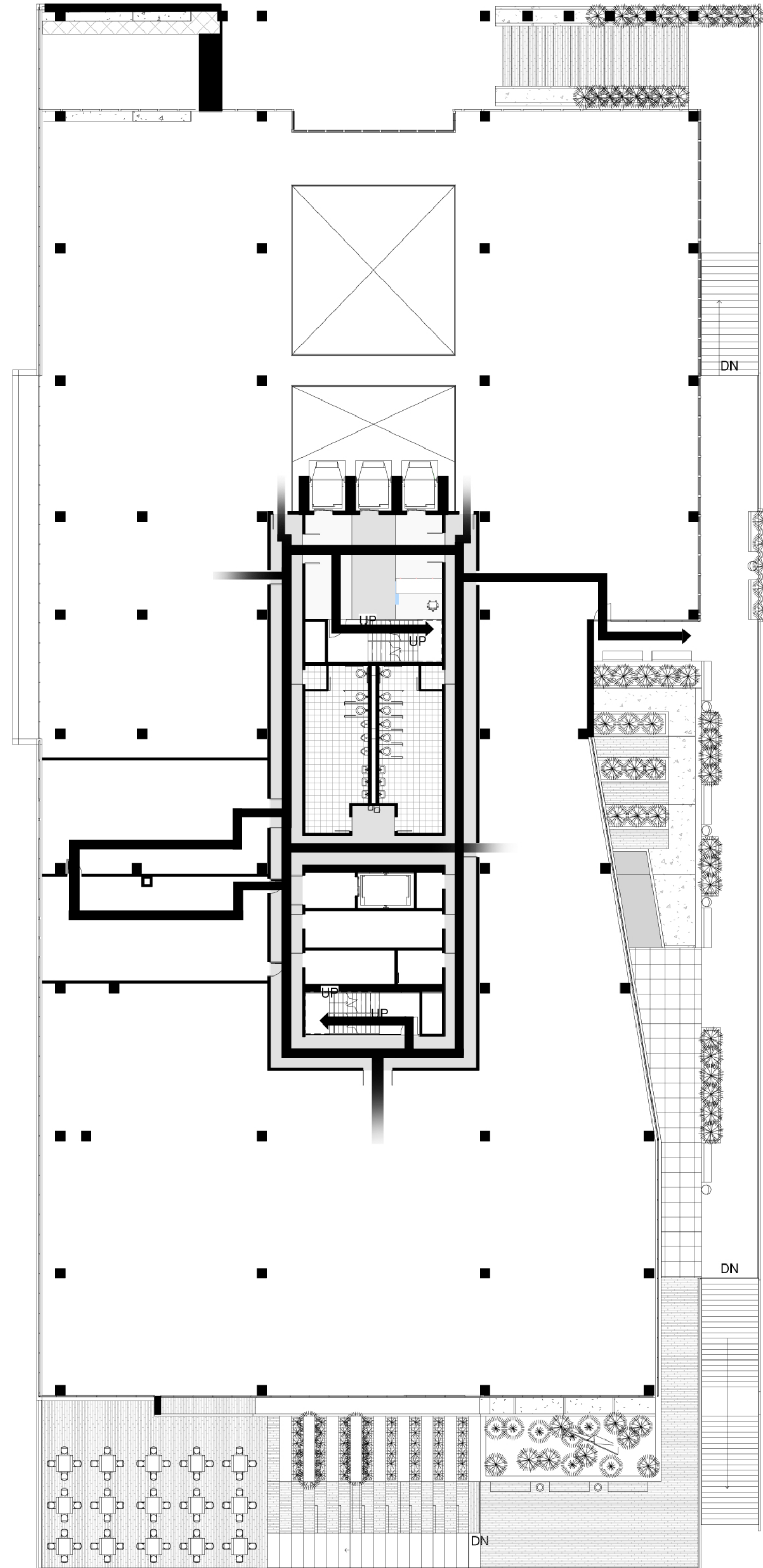


## Egress Narrative

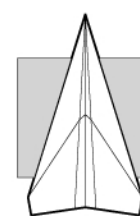
In the event of an emergency, will run to the nearest fire stair. On spec levels, a fire rated corridor is provided for accessing the fire stairs. An area of refuge is provided within the fire stairs for handicap persons awaiting assistance. When the fire alarm is activated, the keycard doors at the elevator lobby are overridden and unlock to ensure a safe evacuation and to become readily accessible by the fire department, paramedics, police, etc. Along the atrium, bridges are provided as an alternative route should the primary route be obstructed or hazardous.

The 2nd level has the option of exiting to the 2nd level park to the east instead of traveling to the fire stairs.



Scale: 1/20"=1'  
 0 5 10 20 40

## 2nd Floor Egress Plans



**CLARKESPOSITO**  
 ARCHITECTURE

### Consultants

Structural Engineer  
 Hollee Becker  
 Mechanical Engineer  
 Matthew Setzekorn  
 Electrical Engineer  
 Jim Stadelman  
 Aeronautic Specialist  
 David Aston

### Contract Information

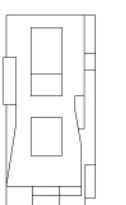
Forest City  
 Washington  
 1615 L Street NW,  
 Suite 400  
 Washington, DC  
 20036  
 Phone: 202-406-6600  
 www.dcwashington.com

Kent State University  
 College of  
 Architecture &  
 Environmental Design

### Client



### Key Plan



Date: 4/11/2011  
 Drwn by: Travis Clarke  
 Chkd by: Harker  
 Sheet Title:  
 Egress Plans

**F-103**