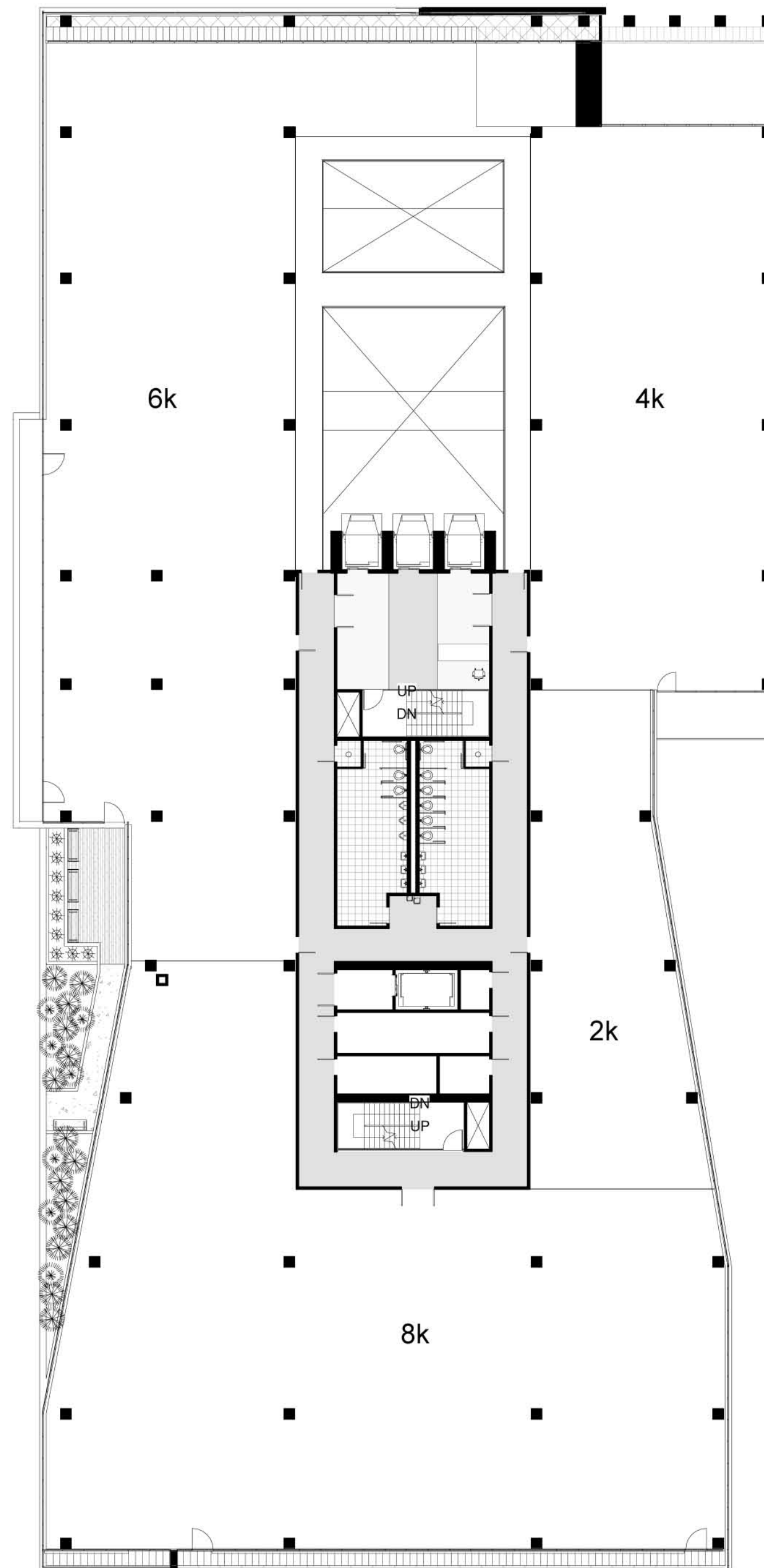
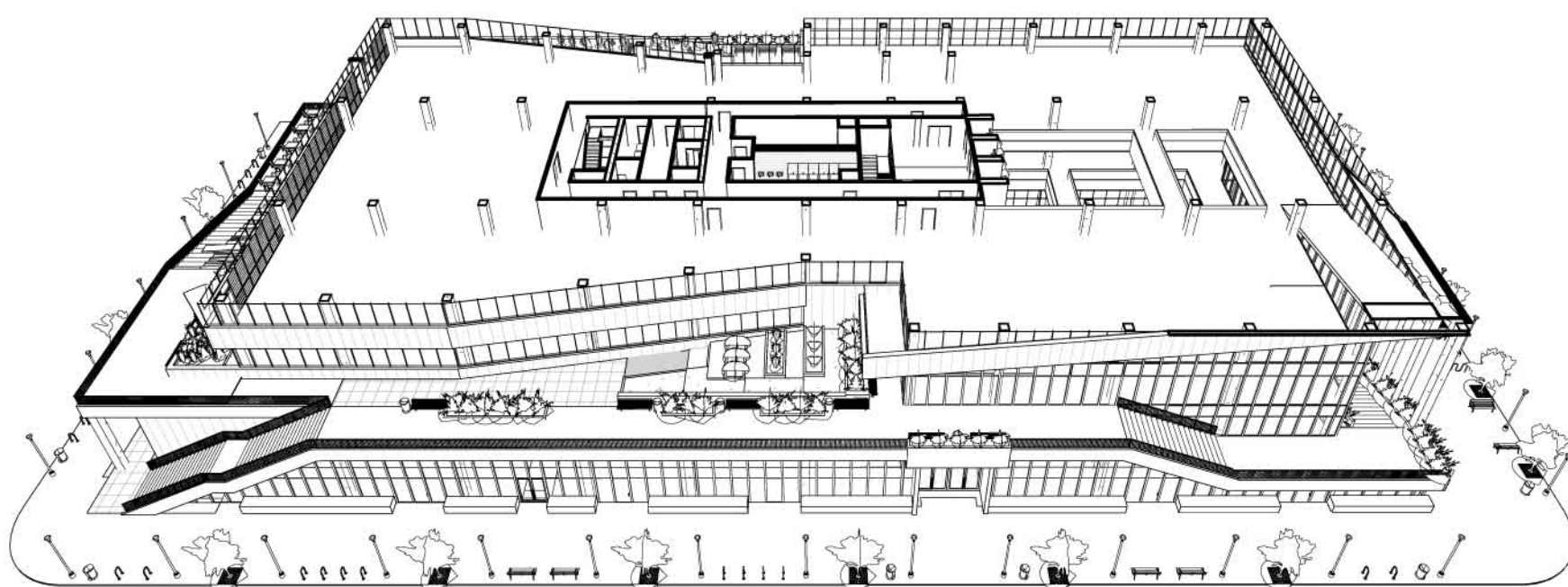


Areas

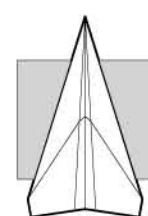
Space	Gross Area (sq ft)	Net Rentable (sq ft)
Spec Tenant Office	25,189	25,189
Atrium	25% of 2,268	0
Core & Circulation	4,868	0
TOTALS	30,624	25,189

82% Efficient



Scale: 1/20"=1'
 0 5 10 20 40

Third Floor Plan



CLARKESPOSITO
 ARCHITECTURE

Consultants

- Structural Engineer
Hollie Becker
- Mechanical Engineer
Matthew Setzekorn
- Electrical Engineer
Jim Stadelman
- Aeronautic Specialist
David Aston

Contract Information

Forest City
 Washington
 1615 L Street NW,
 Suite 400
 Washington, DC
 20036

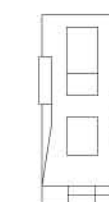
Phone: 202-406-6600
 www.dcwashington.com

Kent State University
 College of
 Architecture &
 Environmental Design

Client



Key Plan



Date: 3/6/2011
 Drwn by: Travis Clarke
 Chkd by: Harker
 Sheet Title:
 Floor Plans

A-103