

**Branch Panel: Panel A**

Location:  
Supply From:  
Mounting: Surface  
Enclosure: Type 1

Volts: 120/208 Wye  
Phases: 3  
Wires: 4

A.I.C. Rating:  
Mains Type:  
Mains Rating: 100 A  
MCB Rating: 400 A

Notes:

| CKT | Circuit Description                      | Trip | Poles | A                  | B       | C       | Poles   | Trip | Circuit Description | CKT                            |    |
|-----|--|------|-------|--------------------|---------|---------|---------|------|---------------------|--------------------------------|----|
| 1   | Receptacle VICE PRESIDENT OFFICE         | 20 A | 1     | 1080 V             | 0 VA    |         |         | 1    | 20 A                | Lighting VICE PRESIDENT OFFICE | 2  |
| 3   | Receptacle PRESIDENT OFFICE              | 20 A | 1     |                    | 720 VA  | 0 VA    |         | 1    | 20 A                | Lighting PRESIDENT OFFICE      | 4  |
| 5   | Receptacle RECEPTION/SECRETARY AREA      | 20 A | 1     |                    |         | 900 VA  | 0 VA    | 1    | 20 A                | Lighting CONFERENCE 3-WAY 1    | 6  |
| 7   | Receptacle CONFERENCE                    | 20 A | 1     | 720 VA             | 252 VA  |         |         | 1    | 20 A                | Lighting                       | 8  |
| 9   | Receptacle GFCI RESTROOM                 | 20 A | 1     |                    | 180 VA  | 210 VA  |         | 1    | 20 A                | Lighting                       | 10 |
| 11  | Receptacle COPIER/PAPER SHREDDER         | 20 A | 1     |                    |         | 180 VA  | 0 VA    | 1    | 20 A                | Lighting CORRIDOR              | 12 |
| 13  | Receptacle LASER PRINTER/FAX MACHINE     | 20 A | 1     | 180 VA             | 0 VA    |         |         | 1    | 20 A                | Lighting CORRIDOR              | 14 |
| 15  | Receptacle KITCHENETTE GFCI              | 20 A | 1     |                    | 180 VA  |         |         |      |                     |                                | 16 |
| 17  | Receptacle OPEN OFFICE GRP 3             | 20 A | 1     |                    |         | 900 VA  |         |      |                     |                                | 18 |
| 19  | Receptacle OPEN OFFICE GRP 2             | 20 A | 1     | 1080 V             |         |         |         |      |                     |                                | 20 |
| 21  | Receptacle OPEN OFFICE GRP 1/KITCHENETTE | 20 A | 1     |                    | 1080 V  |         |         |      |                     |                                | 22 |
| 23  | Receptacle ASSOCIATE'S OFFICE 3          | 20 A | 1     |                    |         | 540 VA  |         |      |                     |                                | 24 |
| 25  | Receptacle ASSOCIATE'S OFFICE 2          | 20 A | 1     | 540 VA             |         |         |         |      |                     |                                | 26 |
| 27  | Receptacle ASSOCIATE'S OFFICE 1          | 20 A | 1     |                    | 540 VA  |         |         |      |                     |                                | 28 |
| 29  | Spare                                    | 0 A  | 1     |                    |         | 0 VA    |         |      |                     |                                | 30 |
| 31  |  |      |       |                    |         |         |         |      |                     |                                | 32 |
| 33  |  |      |       |                    |         |         |         |      |                     |                                | 34 |
| 35  |  |      |       |                    |         |         |         |      |                     |                                | 36 |
| 37  |  |      |       |                    |         |         |         |      |                     |                                | 38 |
| 39  |  |      |       |                    |         |         |         |      |                     |                                | 40 |
| 41  |  |      |       |                    |         |         |         |      |                     |                                | 42 |
|     |  |      |       | <b>Total Load:</b> | 3852 VA | 2910 VA | 2520 VA |      |                     |                                |    |
|     |  |      |       | <b>Total Amps:</b> | 32 A    | 24 A    | 21 A    |      |                     |                                |    |

Legend:

| Load Classification | Connected Load | Demand Factor | Estimated Demand | Panel Totals                           |
|---------------------|----------------|---------------|------------------|--|
| Lighting            | 462 VA         | 100.00%       | 462 VA           |  |
| Receptacle          | 8820 VA        | 100.00%       | 8820 VA          |  |
|                     |                |               |                  | <b>Total Conn. Load:</b> 9282 VA       |
|                     |                |               |                  | <b>Total Est. Demand:</b> 9282 VA      |
|                     |                |               |                  | <b>Total Conn. Current:</b> 26 A       |
|                     |                |               |                  | <b>Total Est. Demand Current:</b> 26 A |

**Branch Panel: Panel B**

Location:  
Supply From:  
Mounting: Surface  
Enclosure: Type 1

Volts: 480/277 Wye  
Phases: 3  
Wires: 4

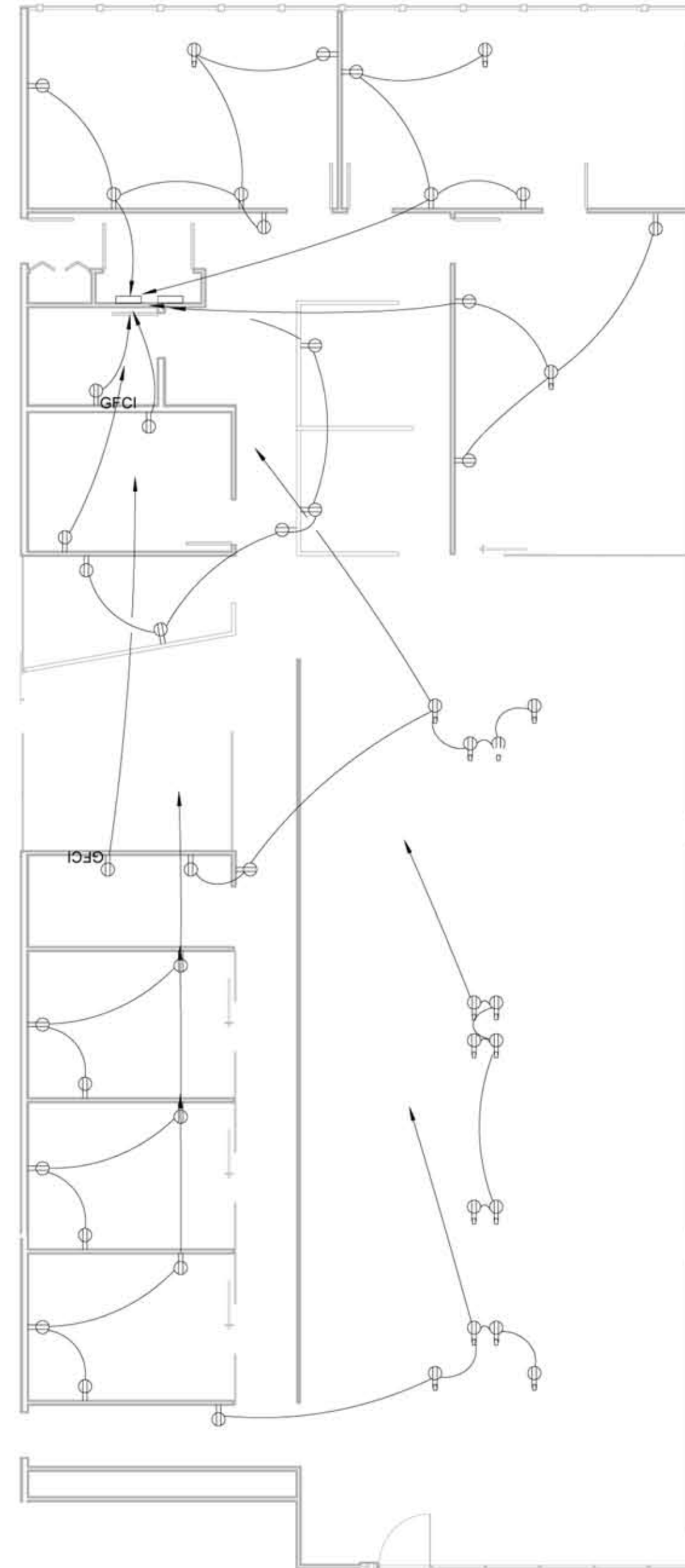
A.I.C. Rating:  
Mains Type:  
Mains Rating: 100 A  
MCB Rating: 100 A

Notes:

| CKT | Circuit Description           | Trip | Poles | A                  | B       | C       | Poles   | Trip | Circuit Description | CKT                           |    |
|-----|-------------------------------|------|-------|--------------------|---------|---------|---------|------|---------------------|-------------------------------|----|
| 1   | Lighting ELECTRICAL CLOSET    | 20 A | 1     | 100 VA             | 72 VA   |         |         | 1    | 20 A                | Lighting CONFERENCE ROOM      | 2  |
| 3   | Lighting RESTROOM             | 20 A | 1     |                    | 400 VA  | 600 VA  |         | 1    | 20 A                | Lighting COPY ROOM            | 4  |
| 5   | Lighting RECEPTION            | 20 A | 1     |                    |         | 700 VA  | 300 VA  | 1    | 20 A                | Lighting KITCHENETTE          | 6  |
| 7   | Lighting ASSOCIATE'S OFFICE 1 | 20 A | 1     | 500 VA             | 400 VA  |         |         | 1    | 20 A                | Lighting ASSOCIATE'S OFFICE 1 | 8  |
| 9   | Lighting ASSOCIATE'S OFFICE 2 | 20 A | 1     |                    | 500 VA  | 400 VA  |         | 1    | 20 A                | Lighting ASSOCIATE'S OFFICE 2 | 10 |
| 11  | Lighting ASSOCIATE'S OFFICE 3 | 20 A | 1     |                    |         | 500 VA  | 400 VA  | 1    | 20 A                | Lighting ASSOCIATE'S OFFICE 3 | 12 |
| 13  | Lighting SIDE ENTRANCE        | 20 A | 1     | 600 VA             | 200 VA  |         |         | 1    | 20 A                | Lighting SECRETARY AREA       | 14 |
| 15  | Spare                         | 0 A  | 1     |                    | 0 VA    | 0 VA    |         | 1    | 0 A                 | Spare                         | 16 |
| 17  |                               |      |       |                    |         |         |         |      |                     |                               | 18 |
| 19  |                               |      |       |                    |         |         |         |      |                     |                               | 20 |
| 21  |                               |      |       |                    |         |         |         |      |                     |                               | 22 |
| 23  |                               |      |       |                    |         |         |         |      |                     |                               | 24 |
| 25  |                               |      |       |                    |         |         |         |      |                     |                               | 26 |
| 27  |                               |      |       |                    |         |         |         |      |                     |                               | 28 |
| 29  |                               |      |       |                    |         |         |         |      |                     |                               | 30 |
| 31  |                               |      |       |                    |         |         |         |      |                     |                               | 32 |
| 33  |                               |      |       |                    |         |         |         |      |                     |                               | 34 |
| 35  |                               |      |       |                    |         |         |         |      |                     |                               | 36 |
| 37  |                               |      |       |                    |         |         |         |      |                     |                               | 38 |
| 39  |                               |      |       |                    |         |         |         |      |                     |                               | 40 |
| 41  |                               |      |       |                    |         |         |         |      |                     |                               | 42 |
|     |                               |      |       | <b>Total Load:</b> | 1872 VA | 1900 VA | 1900 VA |      |                     |                               |    |
|     |                               |      |       | <b>Total Amps:</b> | 7 A     | 7 A     | 7 A     |      |                     |                               |    |

Legend:

| Load Classification      | Connected Load | Demand Factor | Estimated Demand | Panel Totals                          |
|--------------------------|----------------|---------------|------------------|---------------------------------------|
| Lighting - Dwelling Unit | 5672 VA        | 69.38%        | 3935 VA          |                                       |
|                          |                |               |                  | <b>Total Conn. Load:</b> 5672 VA      |
|                          |                |               |                  | <b>Total Est. Demand:</b> 3935 VA     |
|                          |                |               |                  | <b>Total Conn. Current:</b> 7 A       |
|                          |                |               |                  | <b>Total Est. Demand Current:</b> 5 A |



Scale: 1/8"=1'  
0 1 2 4 8 16

**Receptacle Plan**



Consultants

Structural Engineer  
Hollie Becker  
Mechanical Engineer  
Matthew Setzekorn  
Electrical Engineer  
Jim Stadelman  
Aeronautic Specialist  
David Aston

Contract Information

Forest City  
Washington  
1615 L Street NW,  
Suite 400  
Washington, DC  
20036

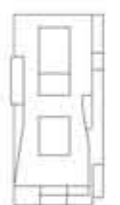
Phone: 202-406-6600  
www.dcwashington.com

Kent State University  
College of  
Architecture &  
Environmental Design

Client



Key Plan



Date: 4/11/2011  
Drwn by: Esposito  
Chkd by: Harker  
Sheet Title:  
Receptacle Plan

4K-E-101