

**Consultants**  
Structural Engineer  
Hollie Becker  
Mechanical Engineer  
Matthew Setzekorn  
Electrical Engineer  
Jim Stadelman  
Aeronautic Specialist  
David Aston

**Contract Information**

Forest City  
Washington  
1615 L Street NW,  
Suite 400  
Washington, DC  
20036

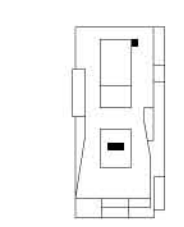
Phone: 202-406-6600  
www.dcwashington.com

Kent State University  
College of  
Architecture &  
Environmental Design

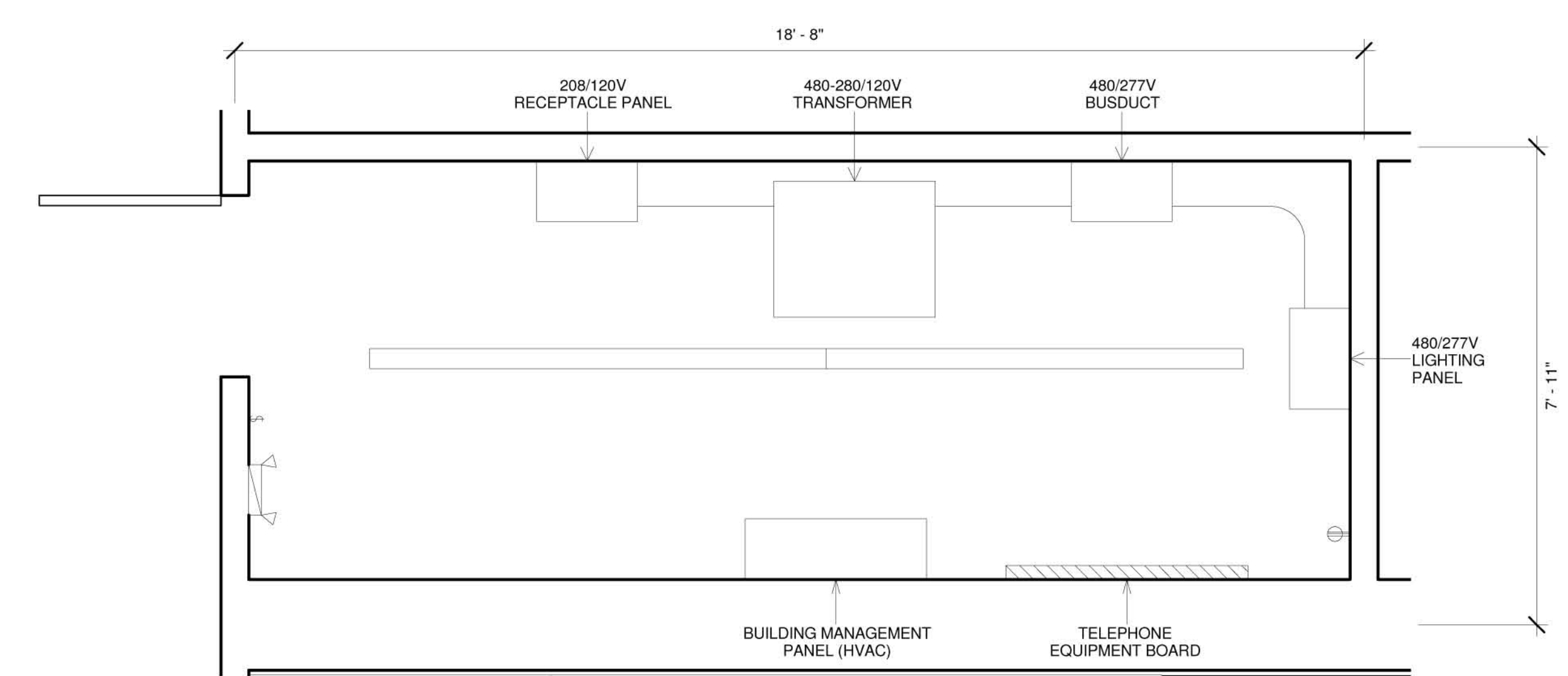
**Client**



**Key Plan**



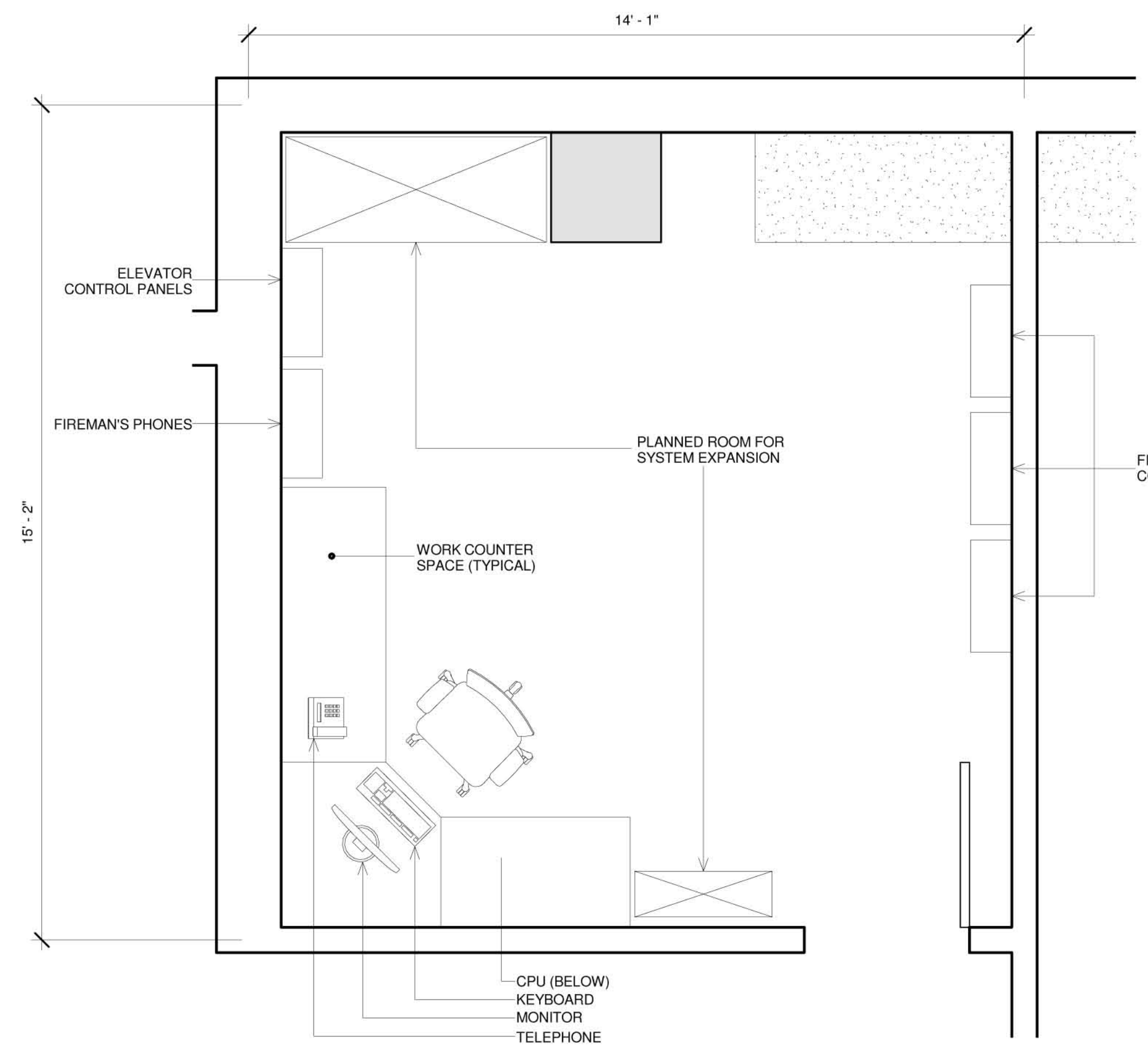
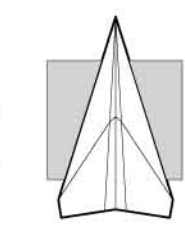
Date: 4/11/2011  
Drwn by: Esposito  
Chkd by: Harker  
Sheet Title:  
Electrical Room Plan



Scale: 1/2"=1'



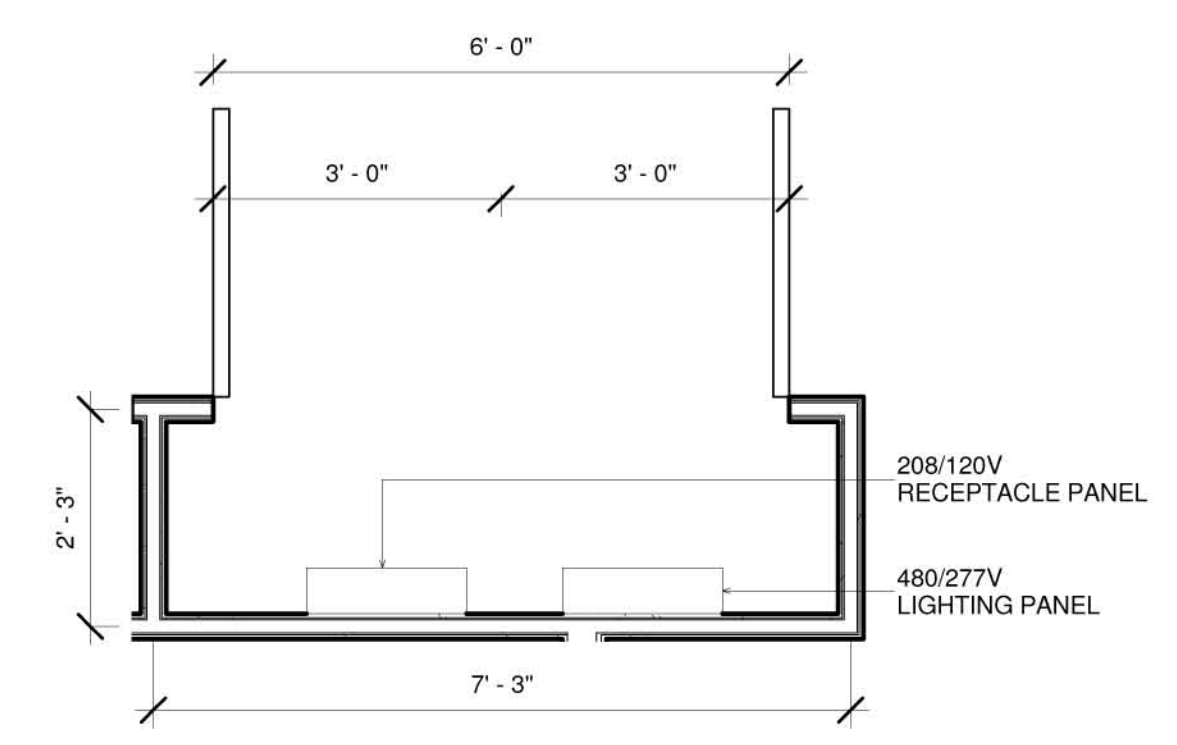
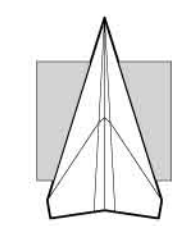
**Typical Electrical Room**



Scale: 1/2"=1'



**Fire Command Center**



Scale: 1/2"=1'



**Typical Electrical Closet**

