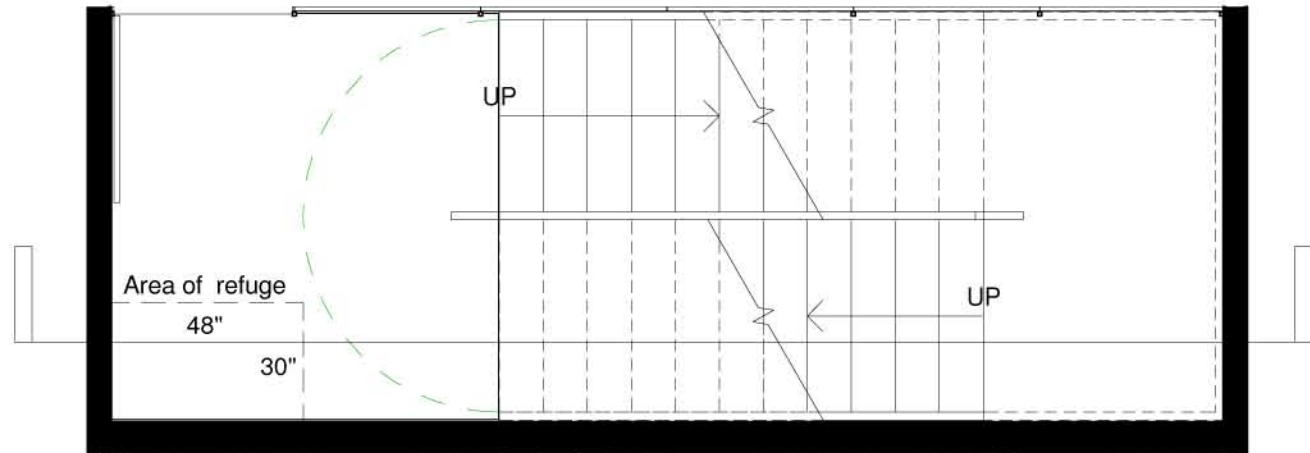
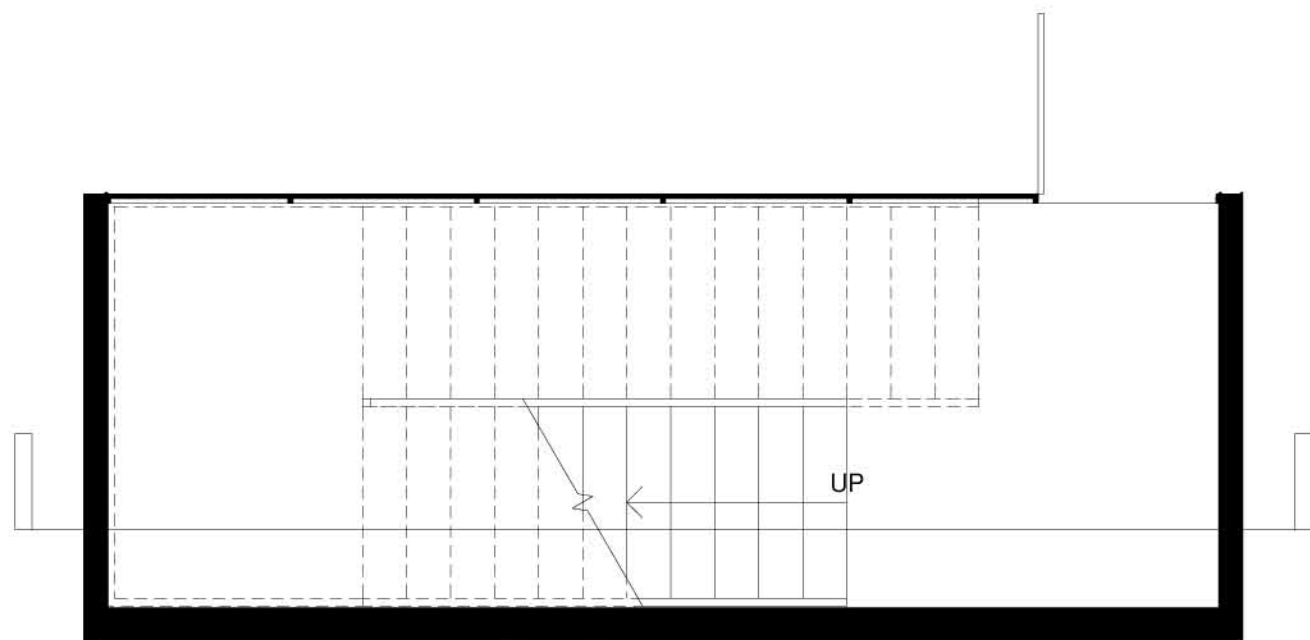


Stair calculations

Distance from landings	Max allowable rise	Number of Risers	Actual Rise	Tread Width
7' - 2"	7 3/4"	12	7 1/8"	11"
9' - 7 7/8"	7 3/4"	15	7 11/16"	11 3/4"



Typical Floor Stair Plan

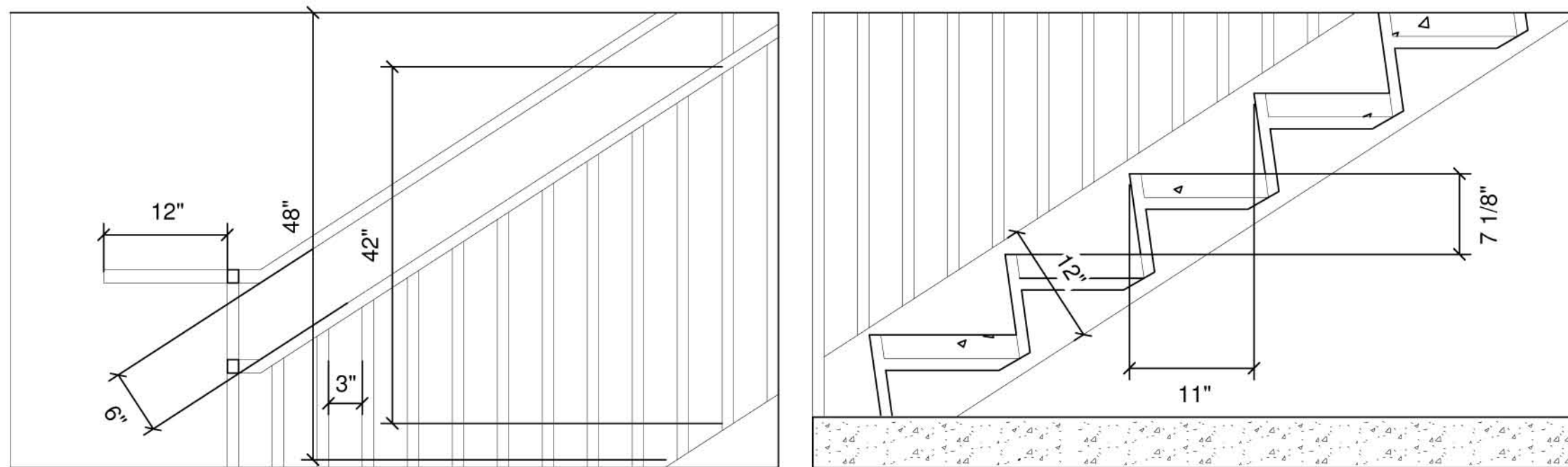
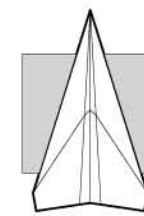


First Floor Stair Plan

Scale: 1/4"=1'

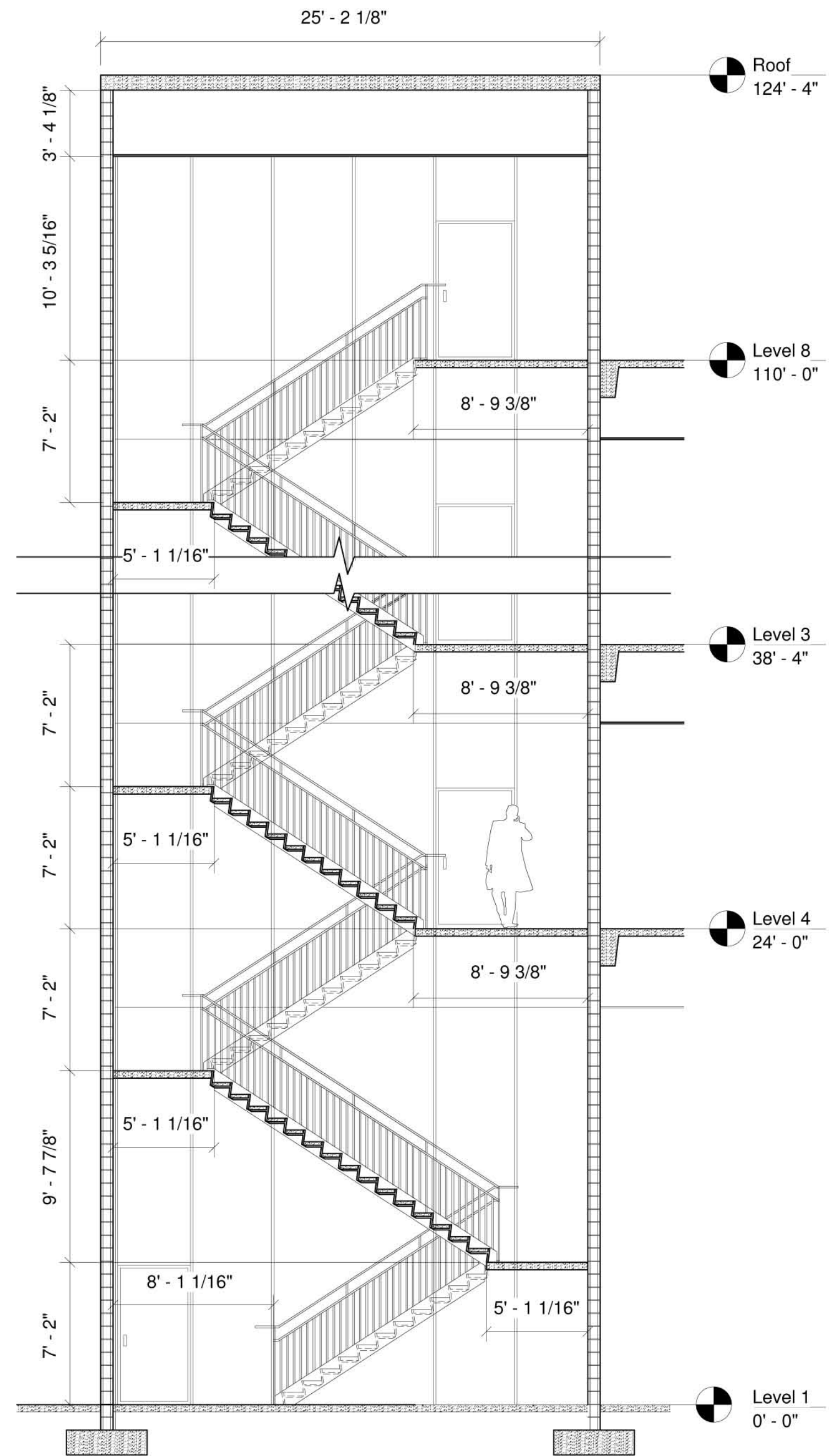


Stair Plan



Railing & Stringer Detail

Scale: 1"=1'



Stair Section

Scale: 3/16"=1'



Consultants

- Structural Engineer
Hollie Becker
- Mechanical Engineer
Matthew Setzekorn
- Electrical Engineer
Jim Stadelman
- Aeronautic Specialist
David Aston

Contract Information

Forest City
Washington
1615 L Street NW,
Suite 400
Washington, DC
20036

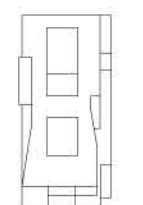
Phone: 202-406-6600
www.dcwashington.com

Kent State University
College of
Architecture &
Environmental Design

Client



Key Plan



Date: 4/11/2011
Drwn by: Esposito
Chkd by: Harker
Sheet Title: Stair
Section, Plan, Details