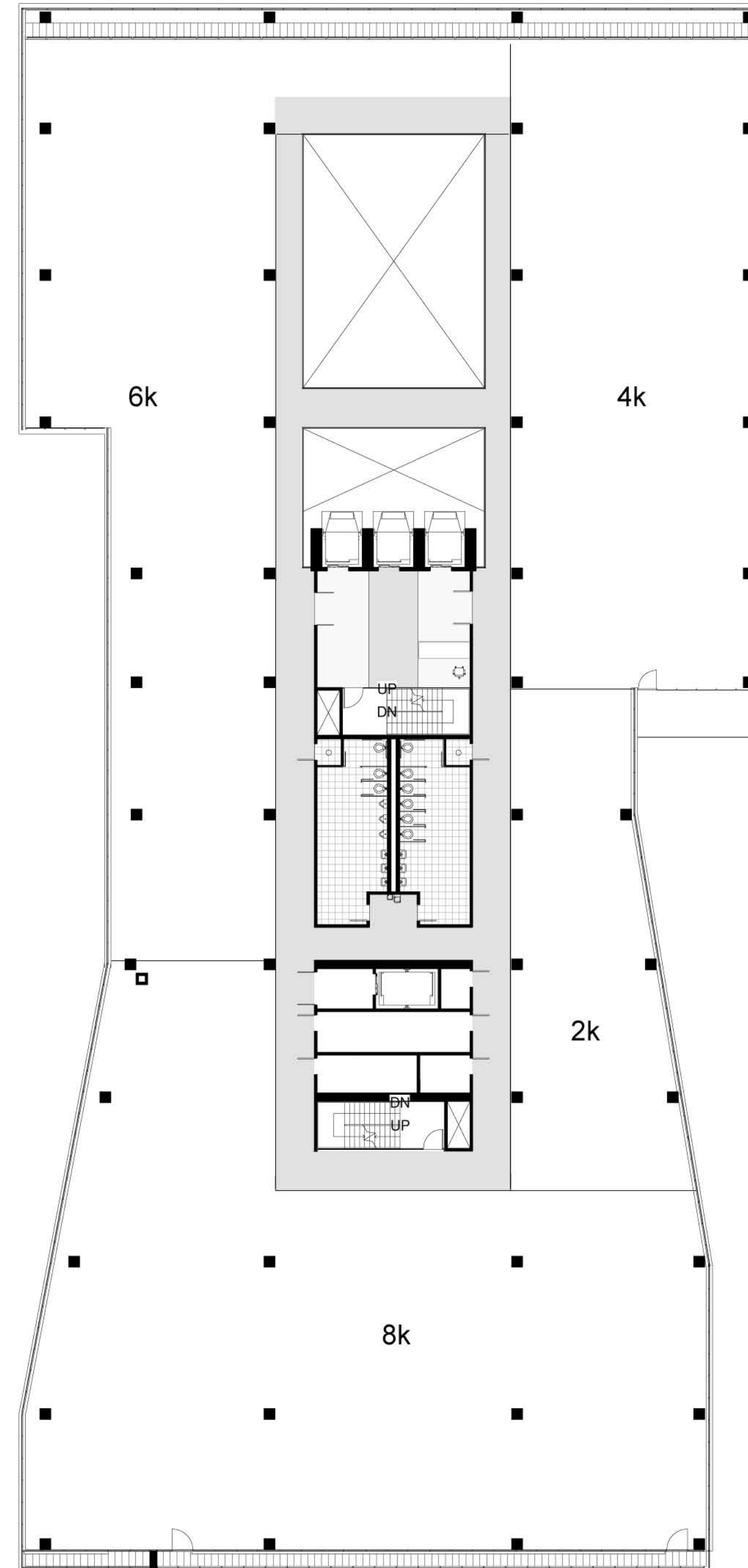
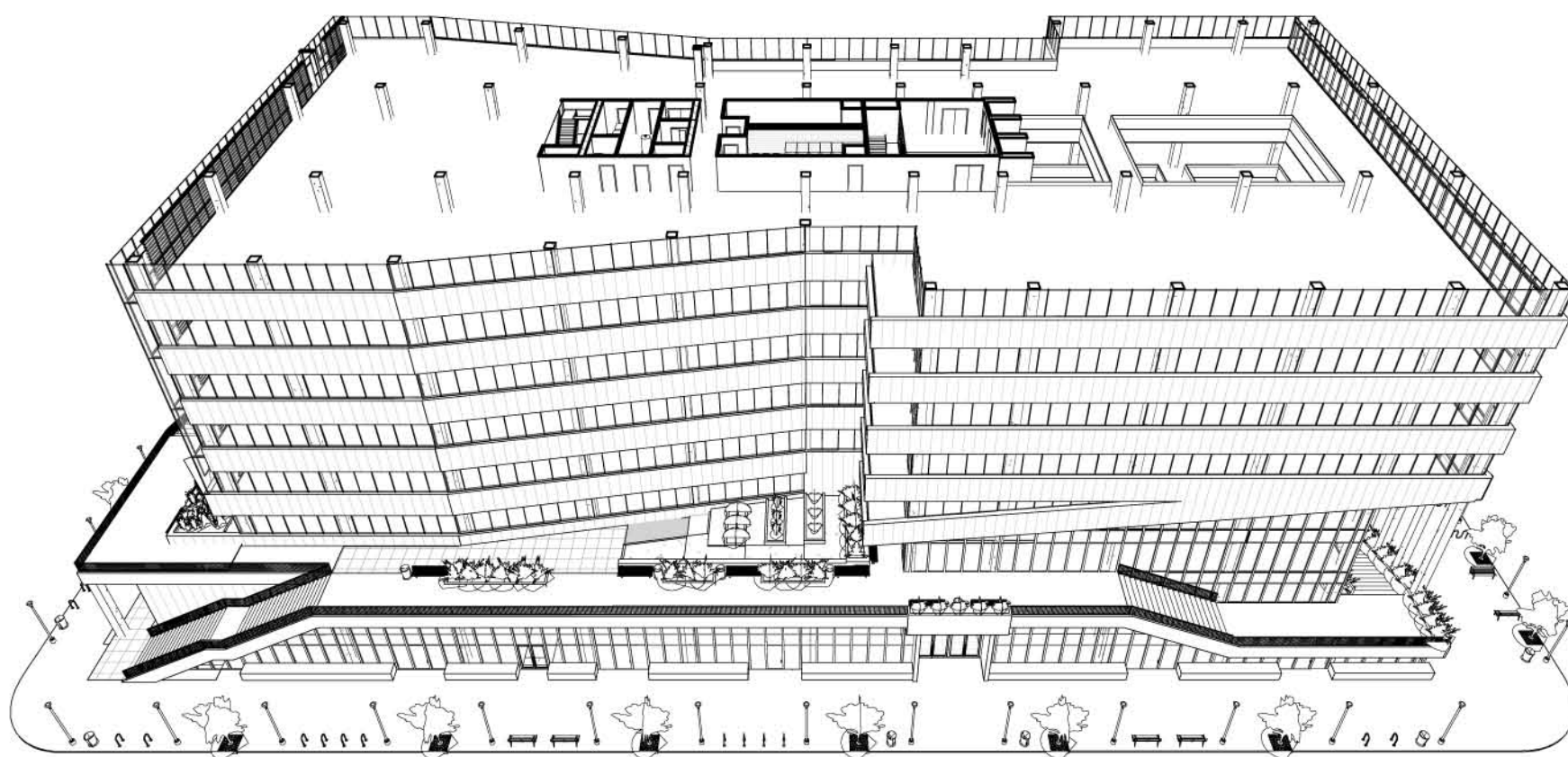


## Areas

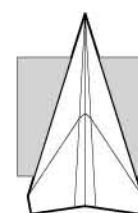
Space	Gross Area (sq ft)	Net Rentable (sq ft)
Prime Tenant Office	26,748	26,748
Atrium	25% of 2,374	0
Core	2,818	2818
<b>TOTALS</b>	<b>30,160</b>	<b>29,566</b>

**98% Efficient**



Scale: 1/20"=1'

# Seventh Floor Plan



**CLARKESPOSITO**  
ARCHITECTURE

**Consultants**

- Structural Engineer  
Hollie Becker
- Mechanical Engineer  
Matthew Setzekorn
- Electrical Engineer  
Jim Stadelman
- Aeronautic Specialist  
David Aston

**Contract Information**

Forest City  
Washington  
1615 L Street NW,  
Suite 400  
Washington, DC  
20036

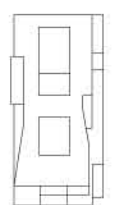
Phone: 202-406-6600  
www.dcwashington.com

Kent State University  
College of  
Architecture &  
Environmental Design

**Client**



**Key Plan**



Date: 3/6/2011  
Drwn by: Travis Clarke  
Chkd by: Harker  
Sheet Title:  
Floor Plans

**A-107**