

Shellig Residence & Studio *for a sculptor*

CMU's

Retain their temperature, as well as are made from readily available local raw materials and manufactured close to construction sites

Reclaimed barnwood

reuse of old materials

Roof Garden

as well as a source of local food production, it has the ability to reduce the overall heat absorption of the building which then reduces energy consumption

Recycled corrugated metal

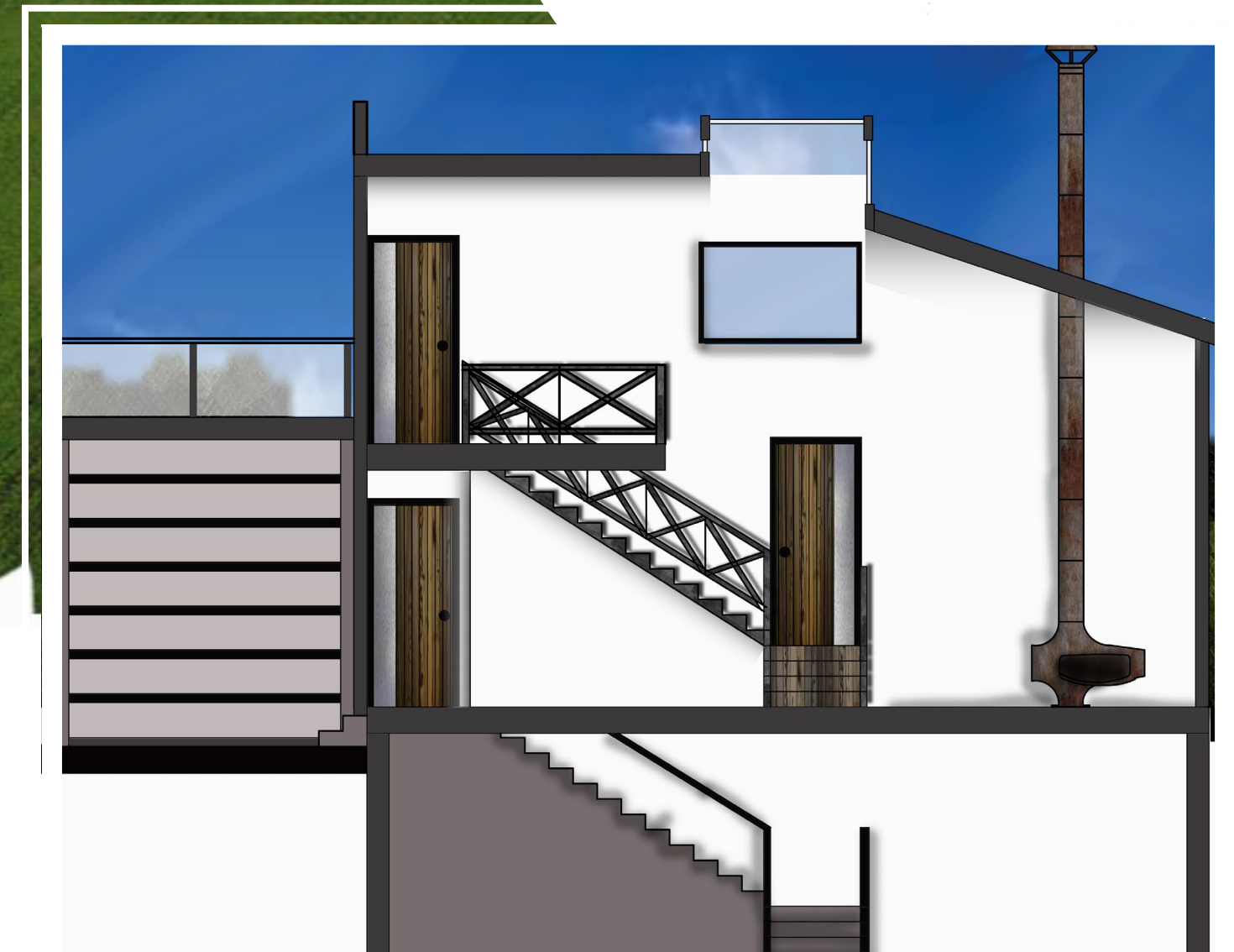
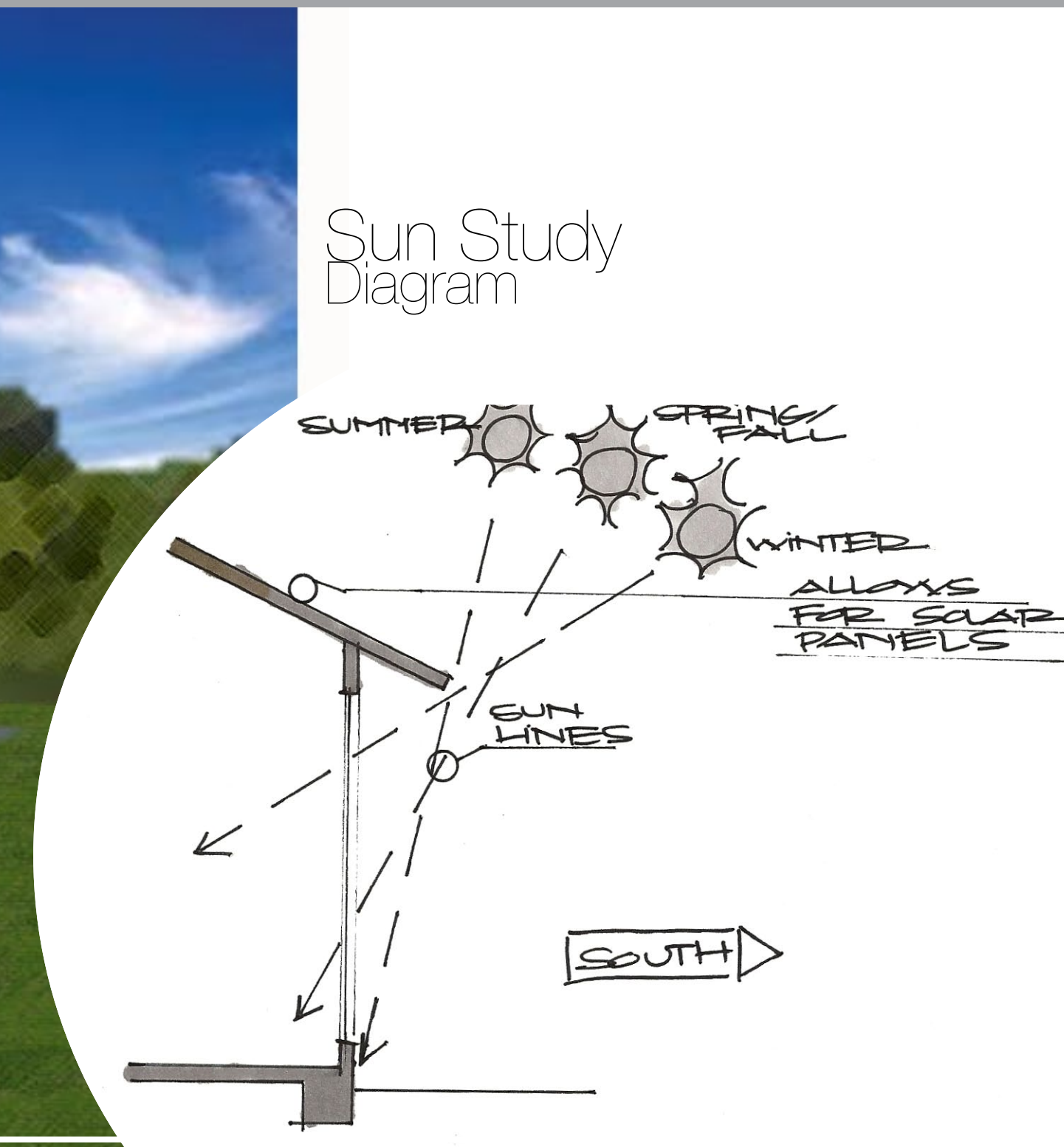
reuse of old materials

Xeriscaping

landscaping and gardening in ways that reduce or eliminate the need for supplemental water from irrigation



Exterior Perspective



Interior Section