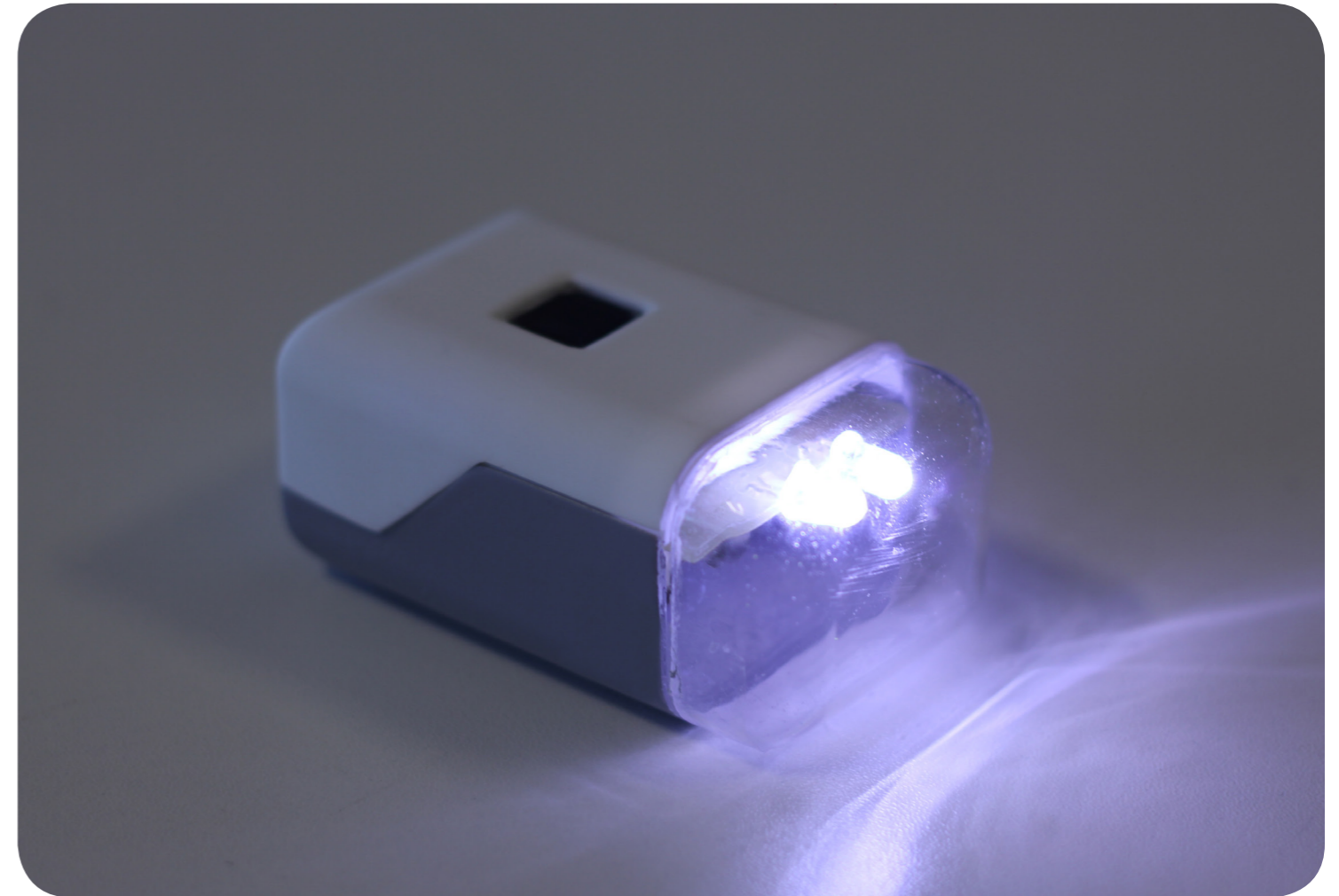
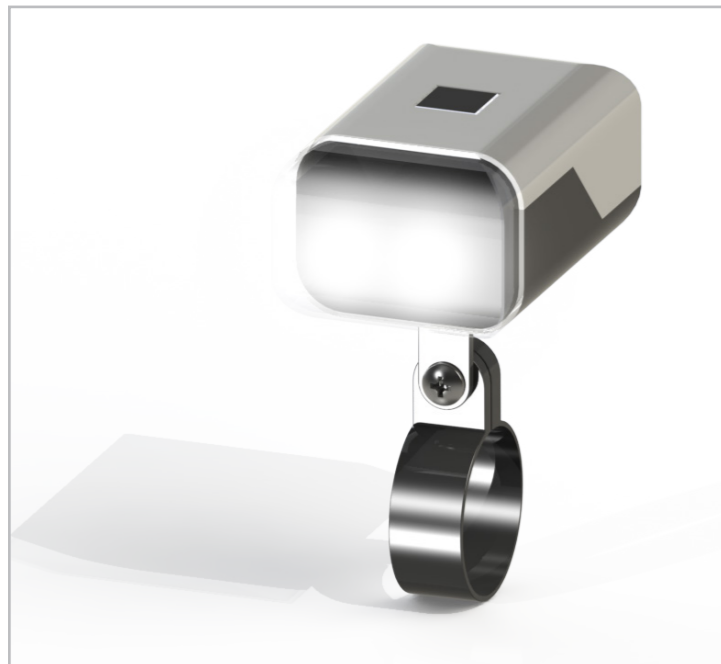


Electronics & Workshop Skills

This prototype bike light was made using vacuum forming but in industry the product would be manufactured using injection casting. The PCB [designed and soldered together in the workshop] allows the LED's to have three settings: on continuously, blinking slowly and blinking rapidly.

The bike light is powered by three AAA batteries that can be easily changed by simply sliding the top part off the bottom casing. The product can easily be attached or detached from the clip.

The clip is attached to the handlebar by the flexible 30mm ring at the bottom and held in place by one 25mm screw bolt and incased nut.



Modelled in Solidworks

Rendered using Photoview 360