

A row of champagne bottles with colorful labels and foil-wrapped necks. The labels are in shades of orange, yellow, and blue, each featuring a star and the text 'Champagne Dom Perignon Vintage 2000'. The bottles are arranged in a slightly overlapping manner, creating a sense of depth.

Last Night Out

CAD 670 Easy Weave Project 4
By: Alicia Frank and Rachael Ferenc

Target Market

The target market for 'Last Night Out' is a young, engaged woman in her mid 20s-mid 30s. She has a good job and lives in the trendiest part of town. She is the life of the party and enjoys the night scene. She is ready to settle down with her future husband and is going out for one last night with her girlfriends.

Our shop supplies bachelorettes looking for an outfit for her celebration. We have jackets, skirts, dresses, and blouses. Our prices range from \$50 - \$200. Our fabrics include fancy lace, satin, and wool tweeds. She is sure to look her best for her 'Last Night Out'.

Original Image



Las Vegas



Tiffany Blue
Sun Burnt
Last Kiss
Las Vegas Purple
Gamble Green
Blacking Out In Vegas

New York



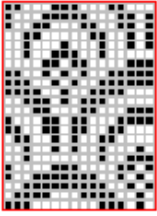
Something Blue
'I Do' Green
Forever Blue
Blushing Bride
Platinum
Midnight Black

Atlantic City

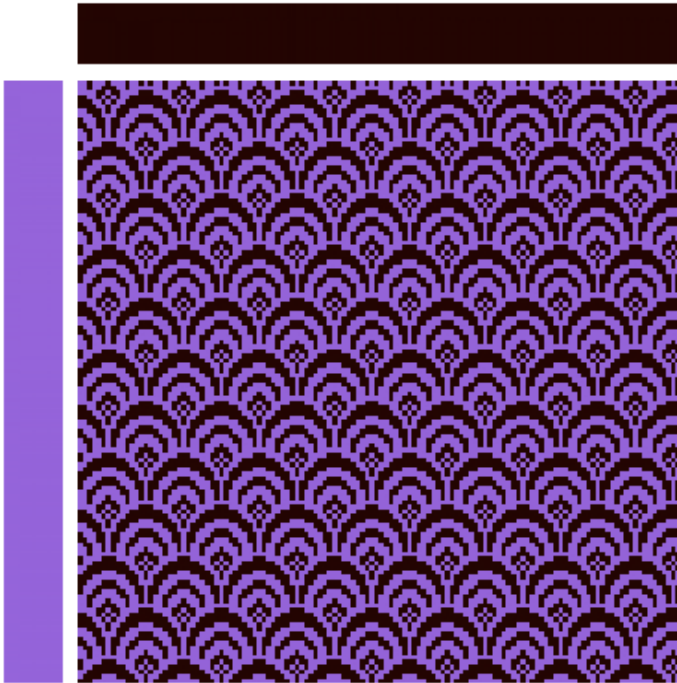


Sun Kissed
Frog Prince
Honeymoon Sand
Ocean Blue
Playful Purple
Charming Charcoal

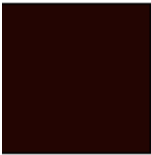
Purple Lace Weave



Beautiful Arches



WARP CO



28

WEFT COLORS



224

POD: 057572

POD: 14971007210

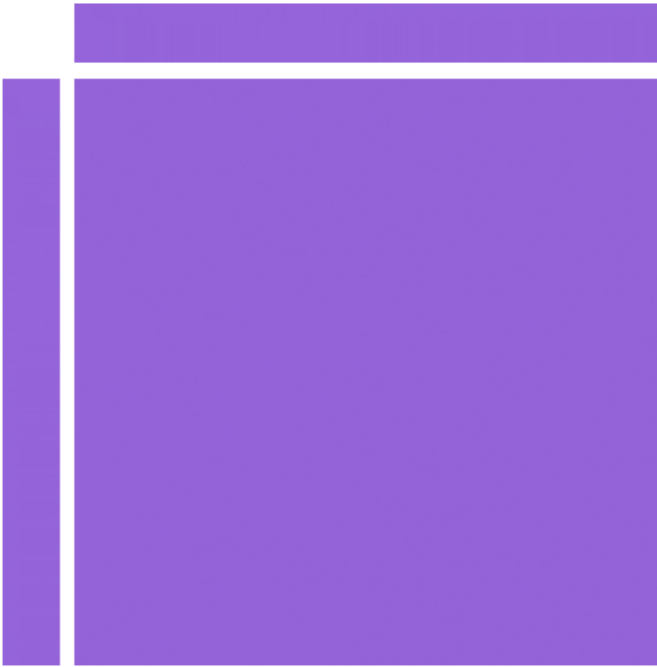
Warp sequence: 541177

Weft sequence: 2647221

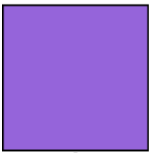
Satin Lining



103

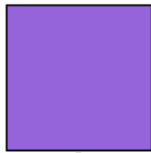


WARP CO



210

WEFT COLORS



210

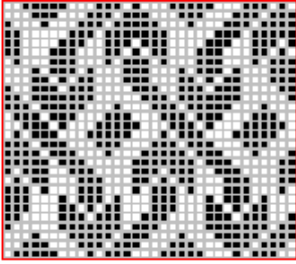
ROD:149*100*210

ROD:149*100*210

Main sequence: 028*16 040*21

Weft sequence: 263*16 207*17*

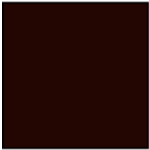
Wool Tweed Weave



3352



WARP COLO...



28

WEFT COLORS



12J

RGB:34552

RGB:1174107

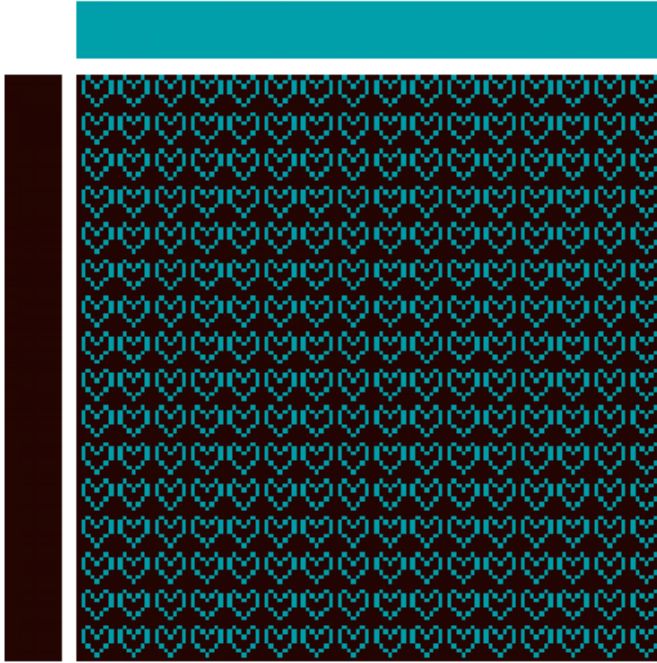
Main sequence: 34499

Weft sequence: 344120

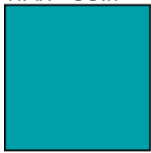
Silk Broadcloth Weave



Untitled



WARP CO...



13C

WEFT COLORS



28

RGB:0*160*171

RGB:05*5*2

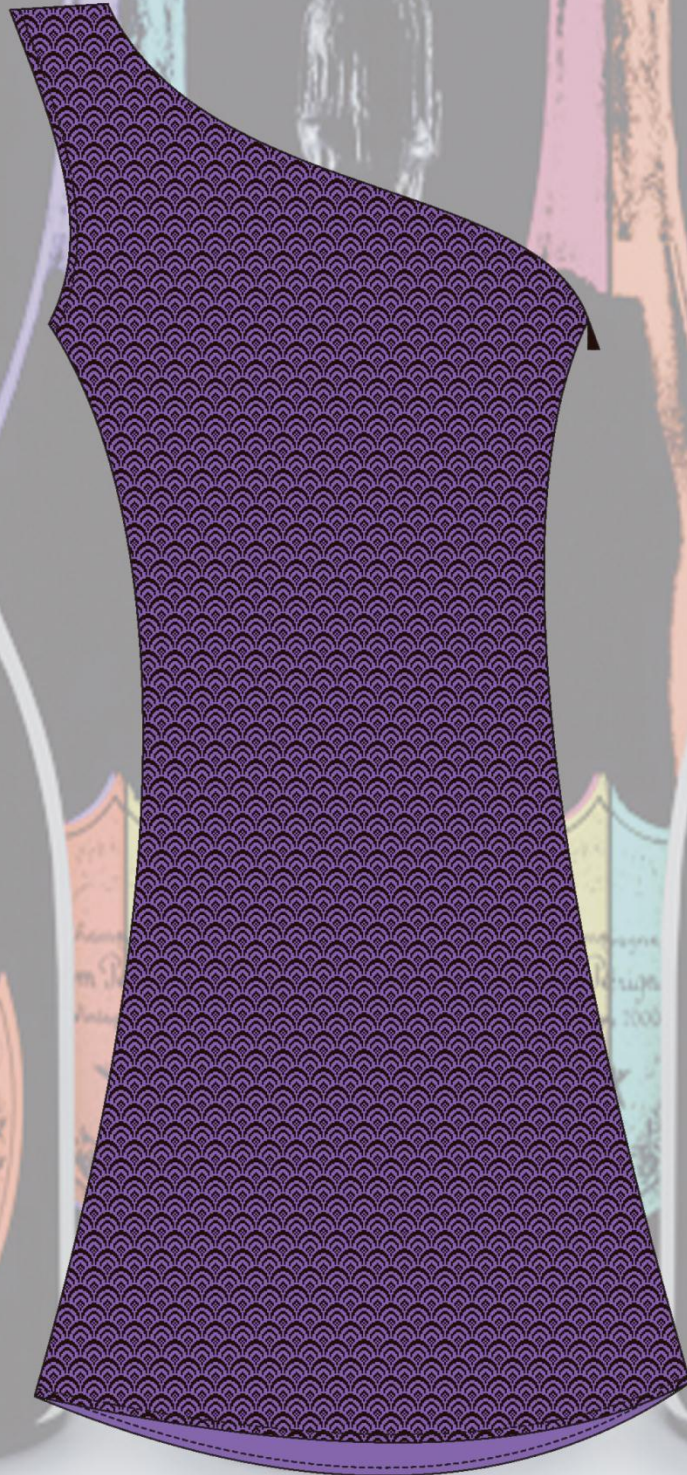
Warp sequence: 14*1:1

Weft sequence: 26*1:28

Wool Tweed Coat



Lace Dress



Bolero with Satin Lining



Silk Broadcloth Blouse



Directions

Color Reduction

To reduce an image in Color Reduction, you open any photo in the program. Select how many colors you would like in the image, anything from 2-12. Once the colors have been chosen, process the image and you see what your new image looks like.

Easy Coloring

To create your own colorways, you open your color reduced image you chose from Color Reduction and duplicate that colorway. After duplicating the image, you can change each color chip to your desired colors.

We created 3 different colorways: Vegas, New York, and Atlantic City. Each colorway includes 6 different colors.

Applying to Garments

To apply the weave to garments, you open the weave in Adobe Photoshop. You then go to Edit and Define Pattern to create your weave as a pattern. Select the area you wish to fill and go to Edit and Fill pattern.

Flats

Our flats were created in Corel Designer

Creating Our Weaves

We created 4 different weaves of lace, satin, wool, and silk broadcloth. To create our lace, we chose a weave from the atlas in Easy Weave called 'beautiful arches' and then used out Playful Purple and Blacking Out In Vegas from our Vegas Colorway.

For our satin lining, we took the weave pattern 103 and used our Playful Purple. We then simulated the weave to set the shading on 30, material at 10, and contrast at 50 in order to show the weave pattern.

For the wool tweed fabric, the weave pattern 3352 gave us a fancy tweed pattern. Using our Gamble Green and Blacking Out In Vegas to give it a unique look.

For our last weave, we created our own weave of hearts with the warp color being Tiffany Blue and our wft color being Blacking Out In Vegas to create a silk broadcloth fabric.