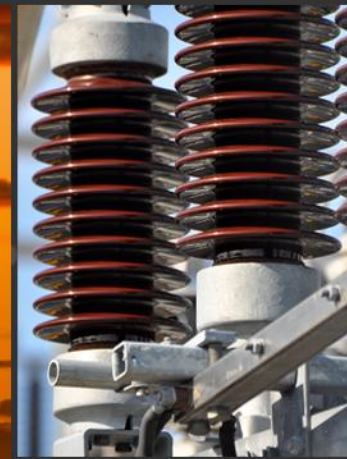


Presentation to

PPL Electric Utilities for Professional Engineering and Environmental Design Services



Introduction to STV

- **Established in 1912**
- **Serving Pennsylvania clients for more than 67 years**
- **100% Employee Owned**
- **National, Award-Winning Practice**
- **Five Offices in Pennsylvania**



STV Services: T&D Projects

- **Siting Analysis**
 - Feasibility Studies
 - Route Selection
 - Environmental Investigations
 - Permitting Needs Analysis
 - PUC Filings
- **GIS/Surveying**
- **Engineering Design**
 - Local, State, Federal Agency Coordination
 - Civil Engineering Design (Land Development, E&S, NPDES)
 - Regulatory Permitting
 - Scheduling
 - Cost Estimating
 - Construction Support Services

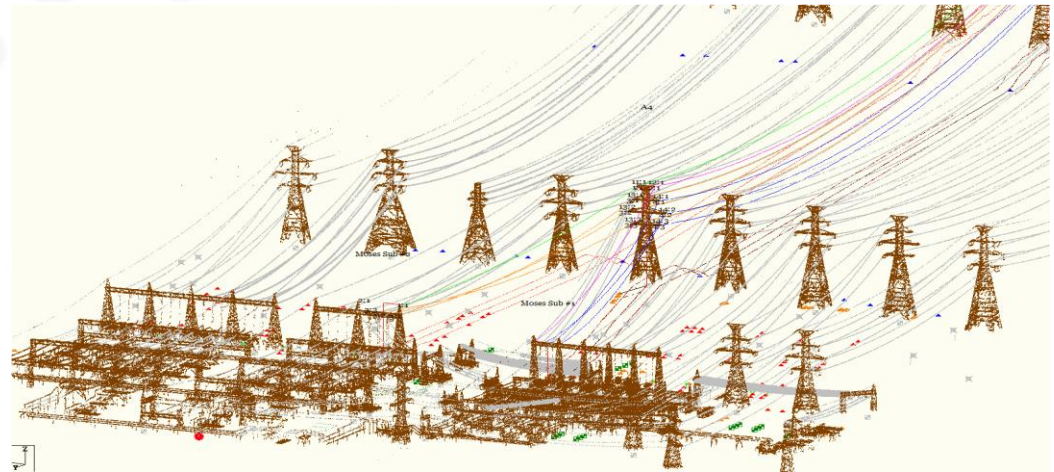
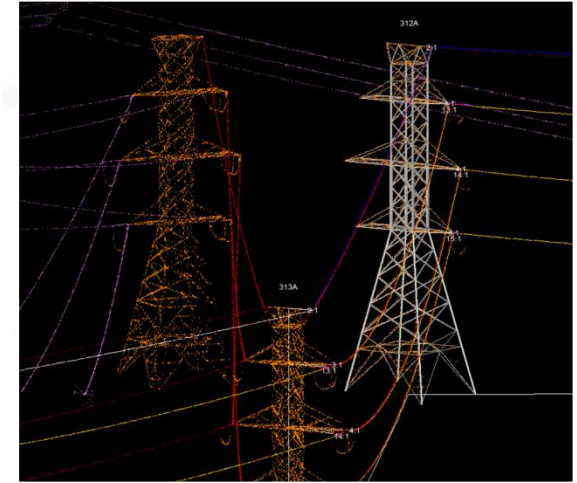
STV Profile: Environmental Permitting

- **Regulatory Expertise: Permitting**
 - Full Project Cycle
 - *Detailed Field Investigations*
 - *Regulatory Agency Coordination*
 - *Permitting Analyses & Permit Matrix*
 - *Application Preparation, Submission, Tracking, Response & Coordination*
 - *Mitigation Design*
 - *Permit Monitoring & Reporting*
 - *Permit Closeout*



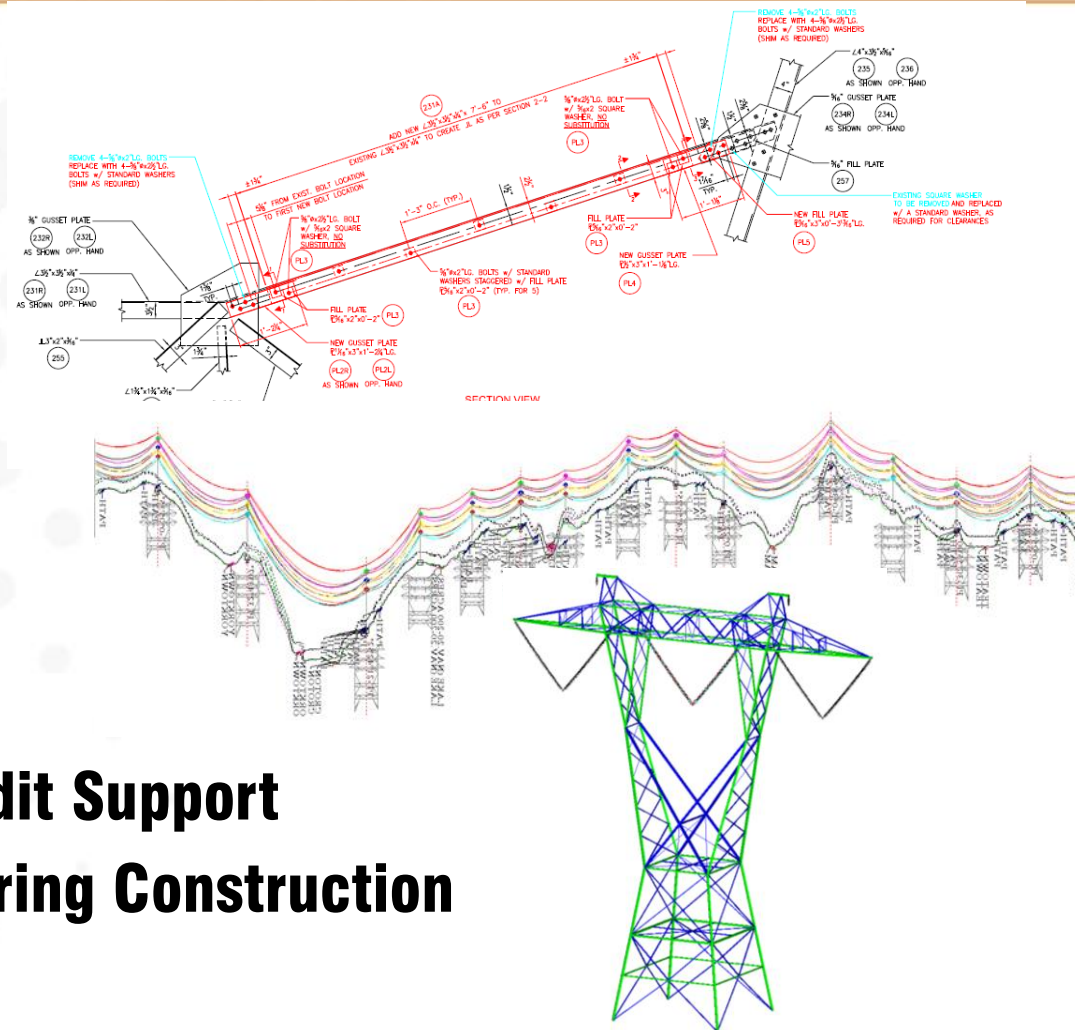
Introduction to Main Line Energy Consultants LLC

- **Multidiscipline Firm:**
 - Civil, Electrical, Mechanical Engineering
- **Focus**
 - Power Line Engineering
 - *Transmission*
 - *Distribution*
 - *Civil/Structural*
- **Industry Experience**
 - PPL Specific
 - Utility Experience
 - Software Expertise

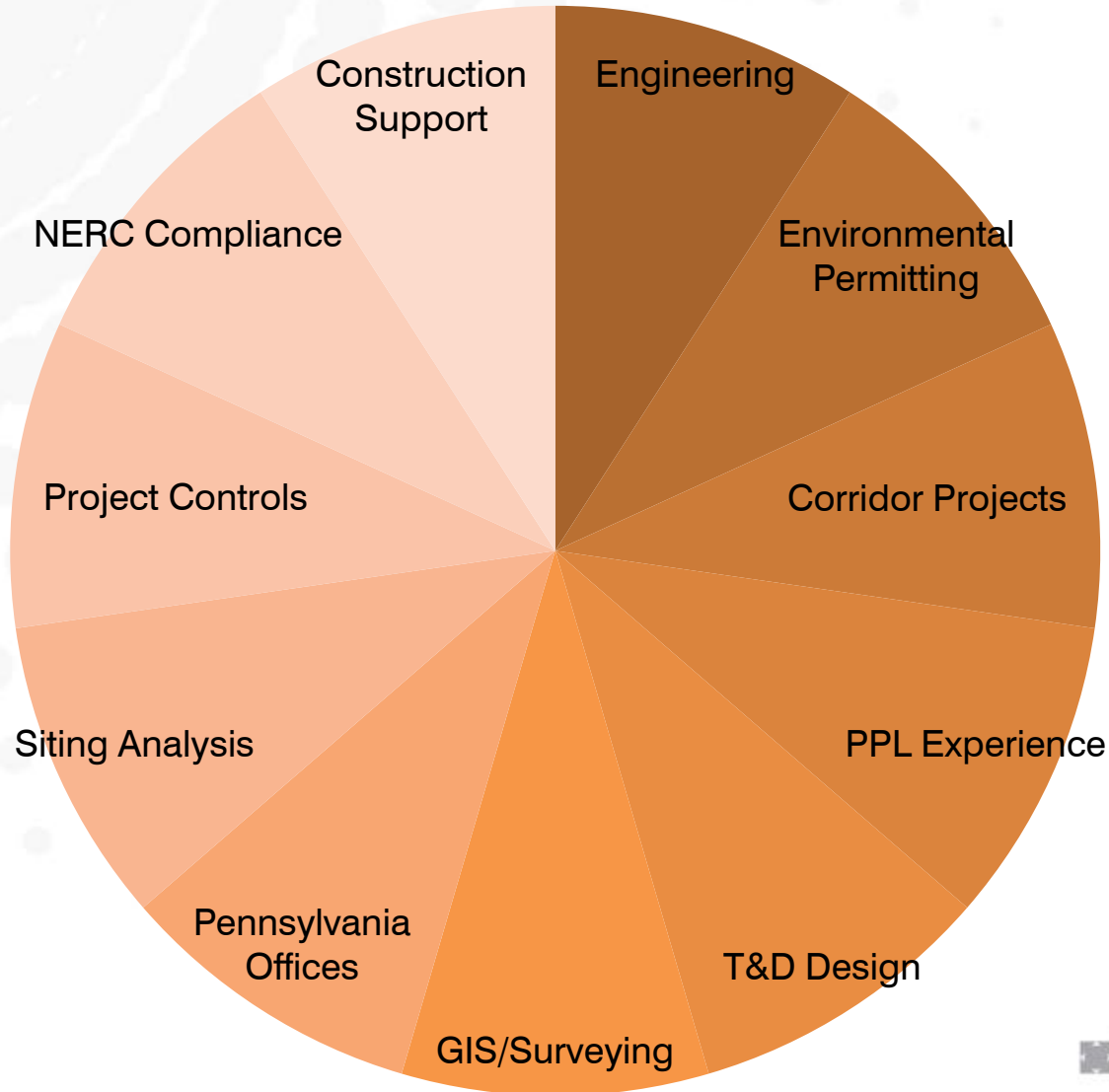


MLEC Services: T&D Design

- New Line Design
- Make Ready Design
- Structural Analysis
- PLS Modeling
- Field Inspection
- Compatible Units
- Permit Applications
- One-Call Notifications
- NERC Compliance & Audit Support
- Engineering Support During Construction



Team Strengths

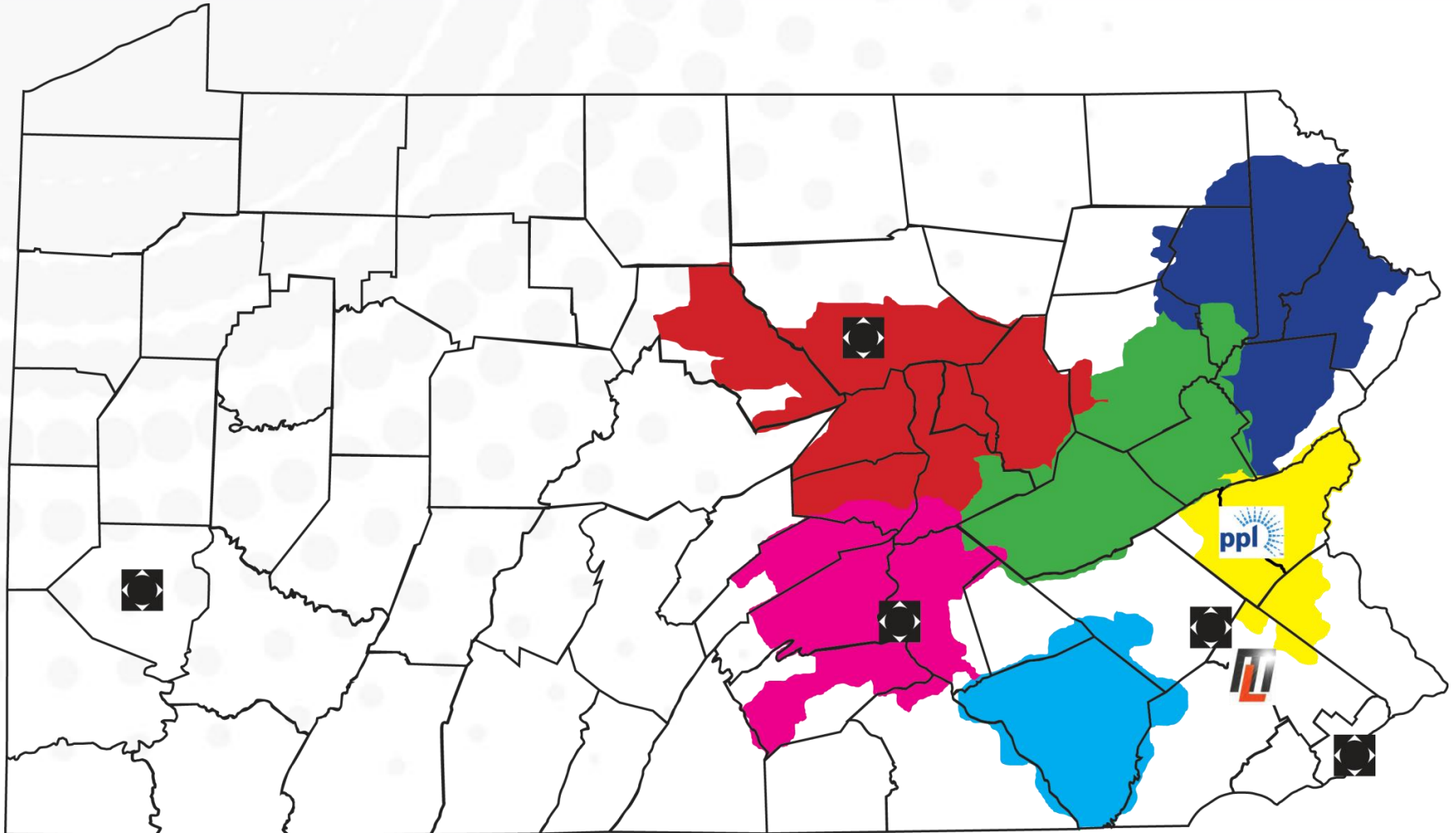


Collaborative Strength

- **Geographic Proximity**
 - Shared Project Office Space
- **Project Specific Prime/Sub**
- **Single Point-of-Contact**
- **Depth of Resources**
- **Familiar with PPL Processes**
- **Blended QA/QC Program**



STV/MLEC Serving PPL



Program Organization



Integrated Project Approach: Project Management

- **Project Planning**
 - Proposals w/ Clear Understanding of Scope
 - Project Management & Quality Plans
 - Baseline Project Manual
- **PMs Experienced in:**
 - Plan Preparation
 - Contracts and Legal Issues
 - Budget & Cost Control
 - Engineering Design
 - QA/QC
 - Scheduling
 - Overall Project Execution
- **Communication & Coordination with Project Team & Stakeholders**
- **Integration of Subconsultants**

Safety

- **Priority for STV & MLEC**
 - Excellent Safety Record
- **Adherence with Site Specific Health and Safety Plans (HASP) for Field Work**
- **Both companies maintain a detailed corporate safety program**



Integrated Quality Program

- **Quality Management - Top Down**
 - A Management Style & Attitude
- **Quality Implementation - Bottom Up**
 - Corporate Goal: Individual Responsibility
 - Design Checks - 35% & 95%
 - Project Manager as Liaison
- **Steps for Implementation**
 - Awareness & Training
 - Standards & Procedures
 - Feedback & Recognition
- **80% Repeat Clients**



Summary

- **The STV/MLEC Team Offers:**
 - Proven Industry Knowledge
 - Partnering Philosophy
 - Recent and Relevant Experience on PPL Projects
 - Experienced Project Managers
 - Proven Project Approach & Quality Systems
 - Realistic Cost Estimates & Schedules
 - Minimal Learning Curve
 - Excellent Safety Record
 - Depth of Staff & Resources
 - Local Pennsylvania Offices