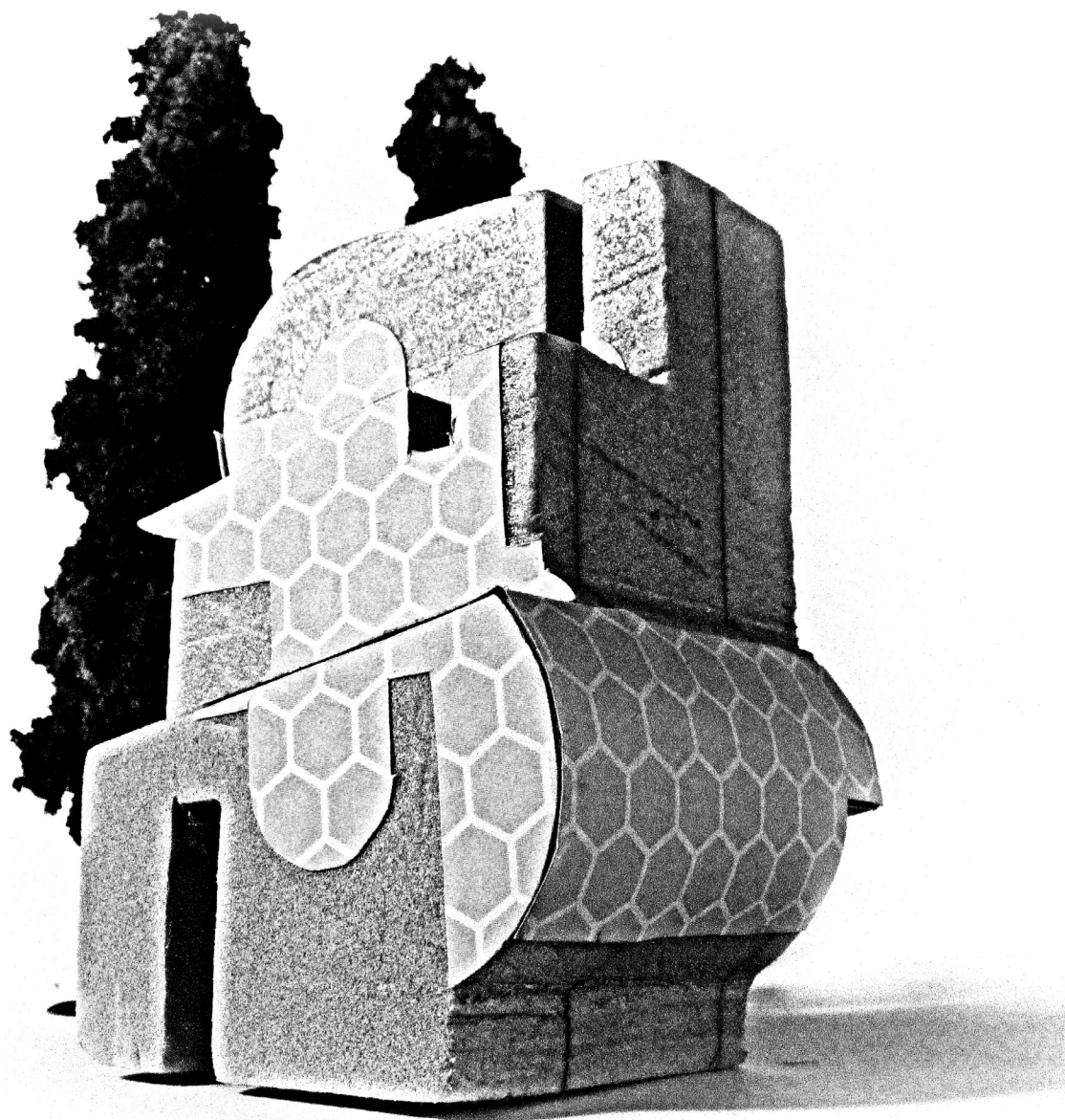




Character #5

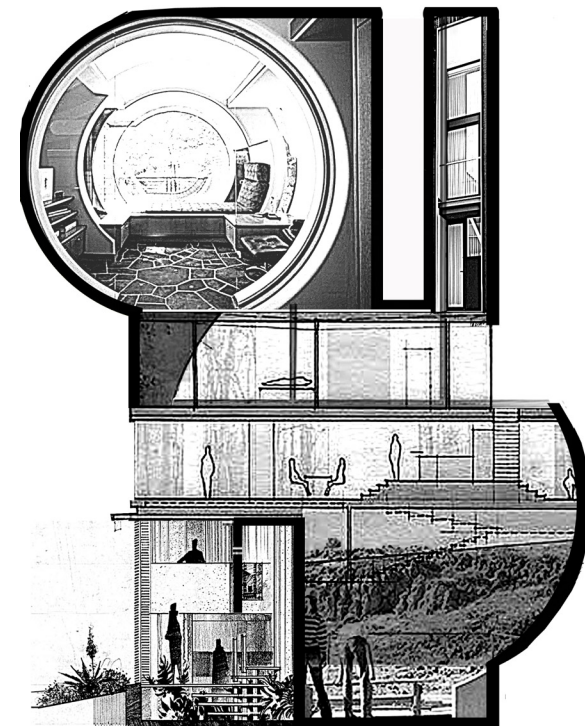
PARAGRAPHER

A great and popular choice within the Friedman Lake Colony, Paragrapher is the perfect Cottage for those who wish to have a new beginning in the Flinterland Lake community. Paragrapher is spacious enough to hold three to five people comfortably.[a paragraph is 3-5 sentences] He offers his residence the freedom to pursue and discuss anything they desire. Paragrapher contains the largest library, taking up most of the interior walls. Although he can stand alone, Paragrapher is usually found near other citizens of the lake community as he likes being a part of something larger than himself.

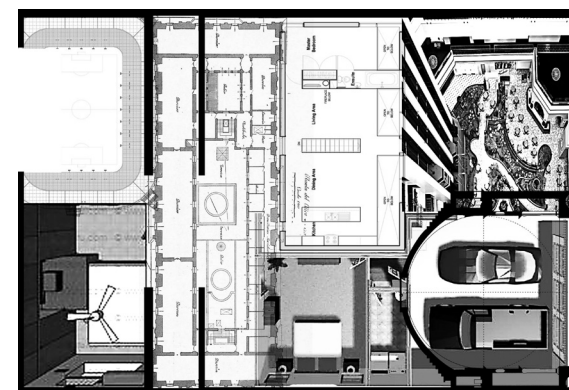


Flinterland's Retreats

Page 15



Paragrapher Section
Not to Scale



Paragrapher Plan
Not to Scale