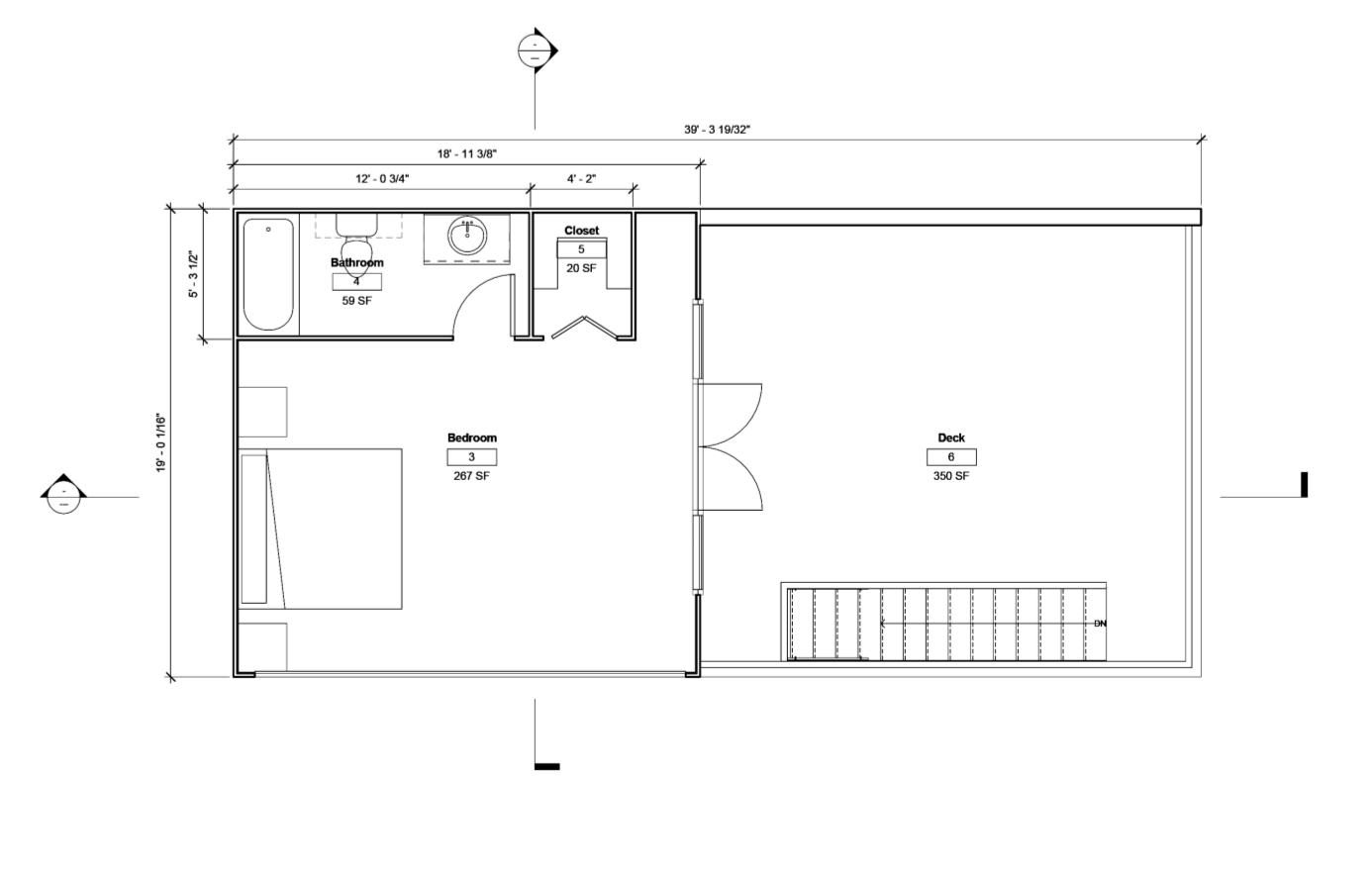
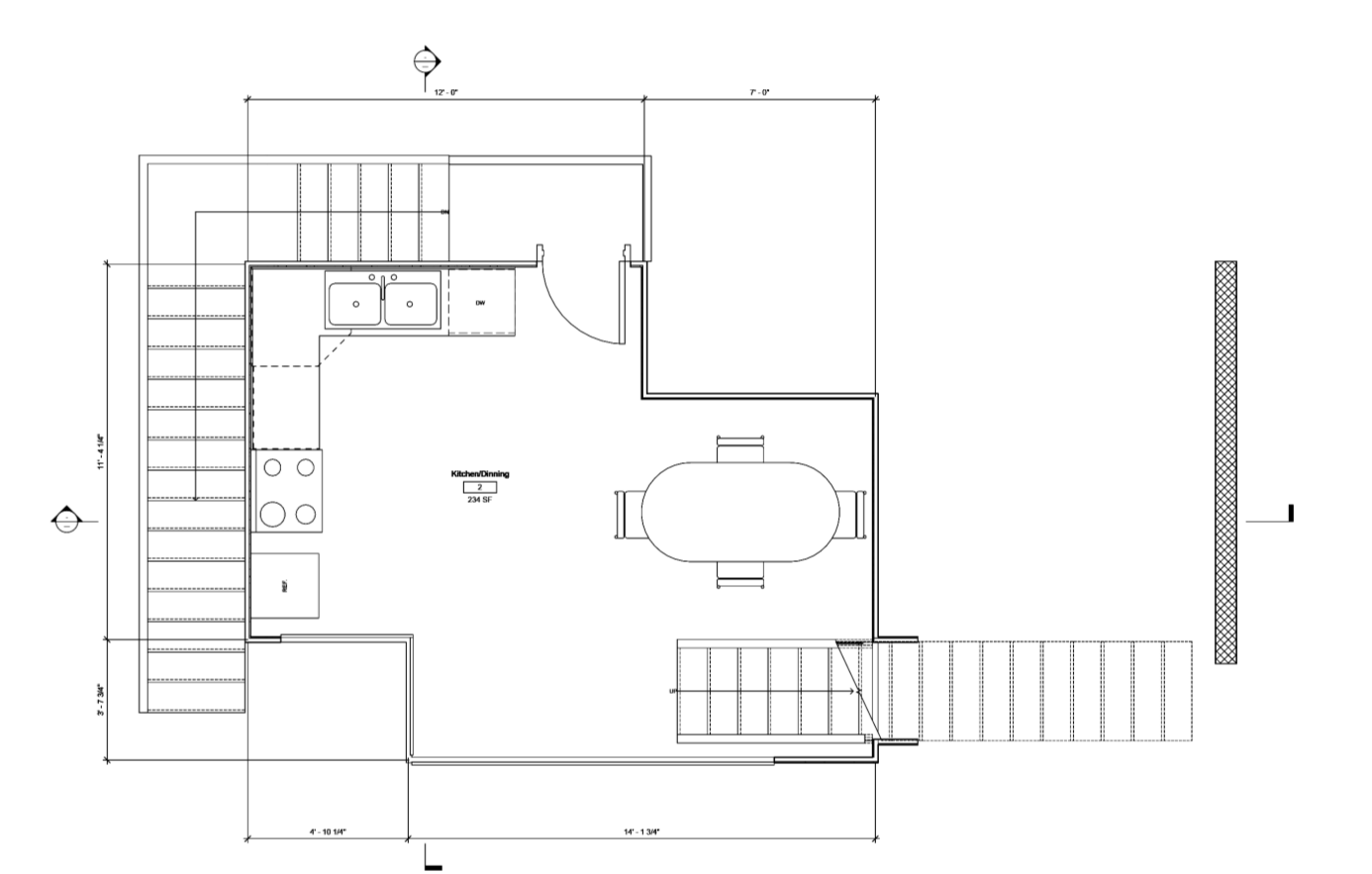
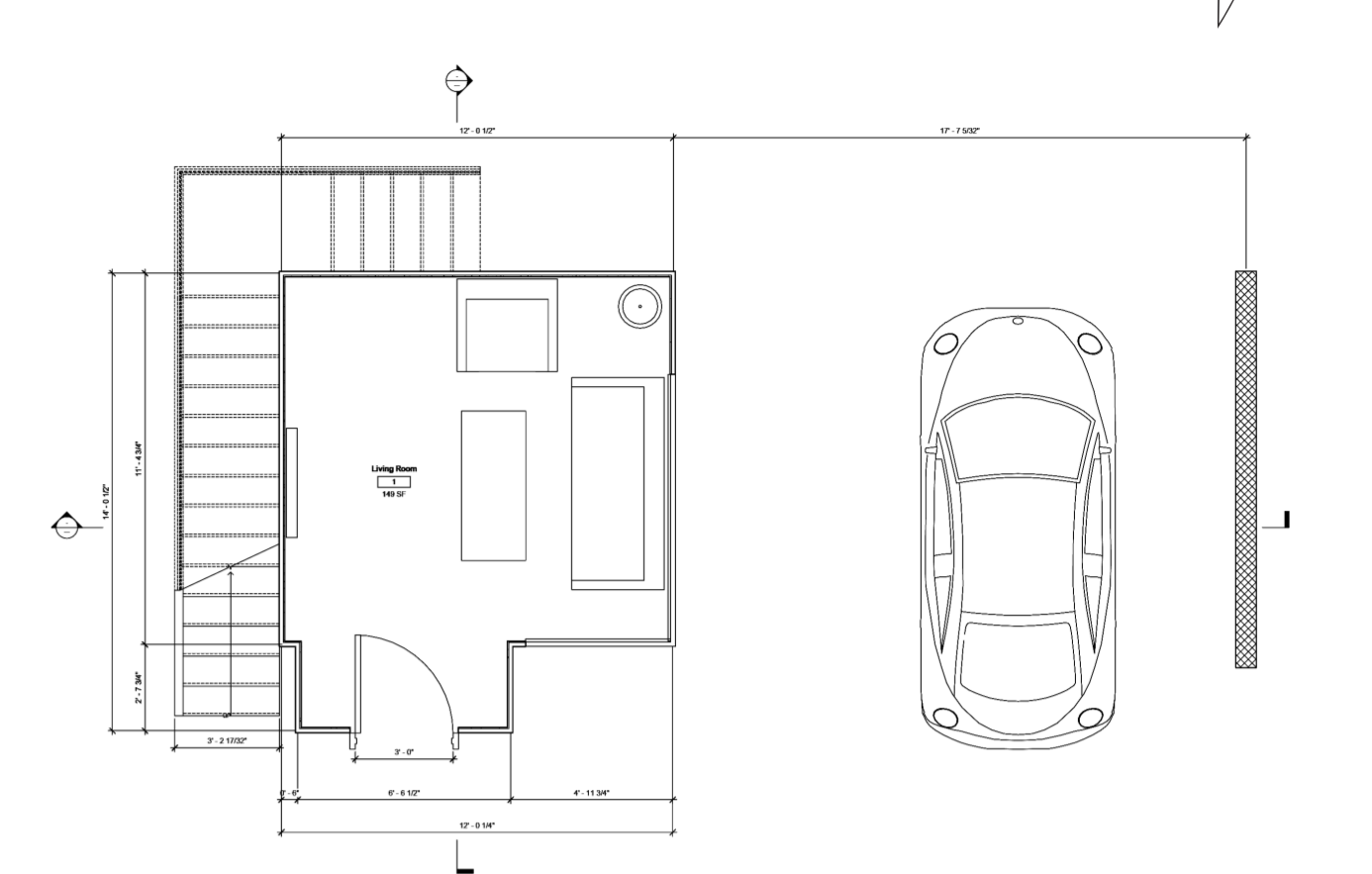


PAUL MARVIN RUDOLPH WAS AN AMERICAN ARCHITECT AND THE DEAN OF THE YALE SCHOOL OF ARCHITECTURE FOR SIX YEARS, KNOWN FOR USE OF CONCRETE AND HIGHLY COMPLEX FLOOR PLANS



NORTH

WEST

SOUTH

EAST