

CONTRACTOR TO MATCH EXISTING ROOF PITCH:
4/12

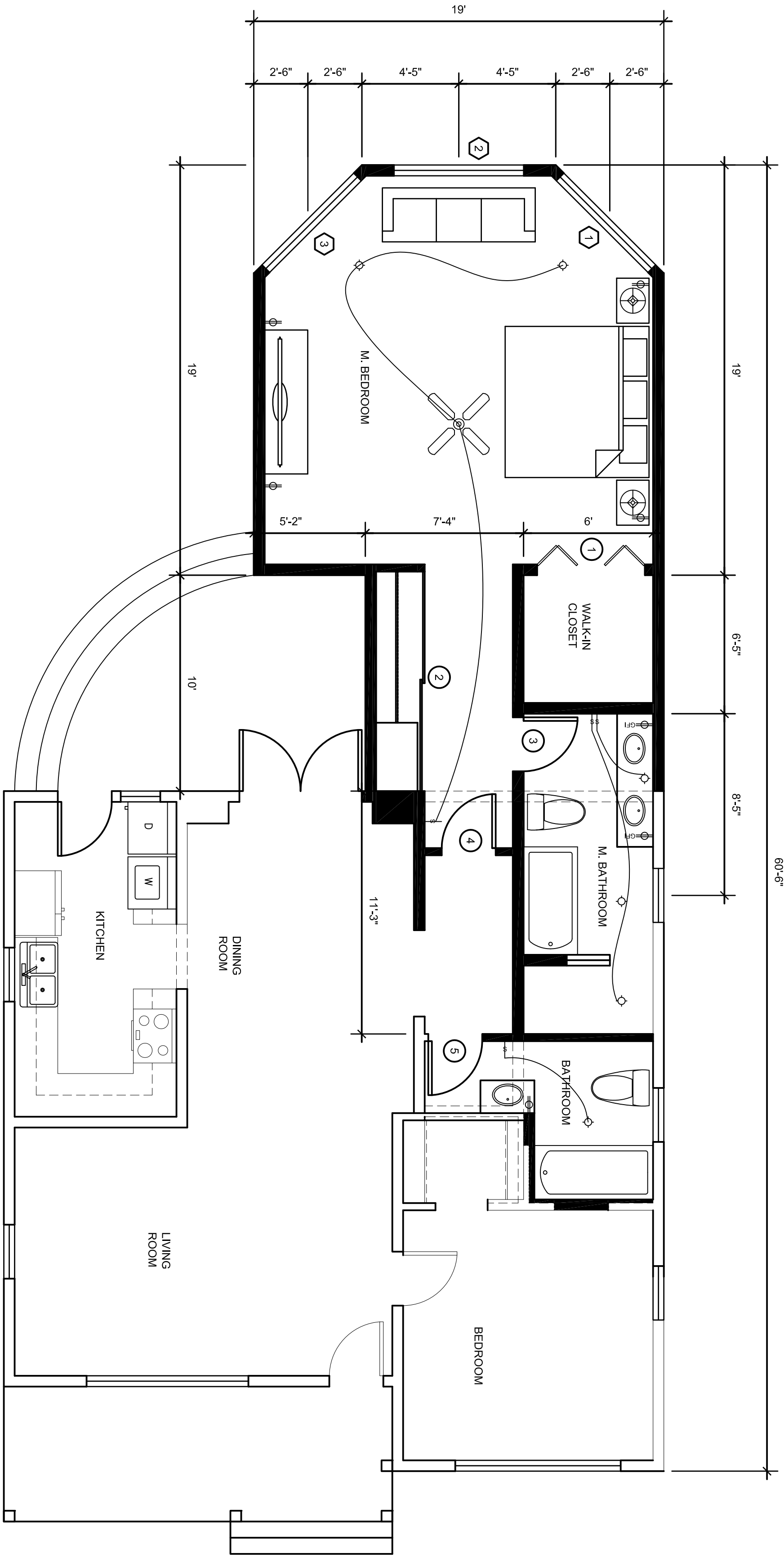
ROOF PLAN
SCALE: 1/4" = 1'-0"

2

SYMBOLS	DESCRIPTION
⊕	OUTLET
⊖	SWITCH
⊕-H	GFI
◇	RECESS LIGHT

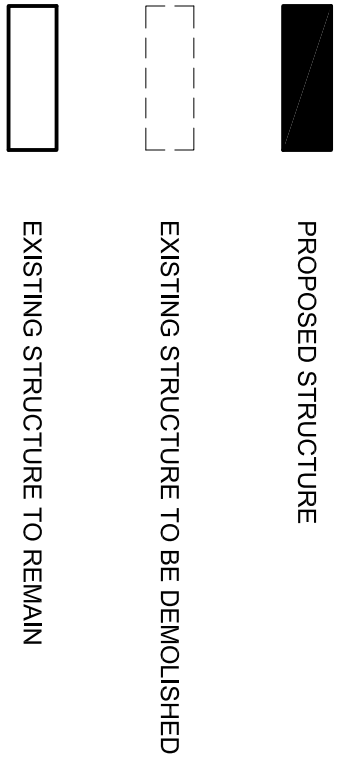
SYML	WIDTH	HEIGHT	MATERIAL	DESCRIPTION
1	5'-0"	6'-9"	MOLDED COMPOSITE	BIFOLD CLOSET DOOR
2	10'-0"	6'-8"	PLAN	MIRRORED SLIDING DOOR
3	2'-6"	6'-9"	MOLDED COMPOSITE	
3	2'-6"	6'-9"	MOLDED COMPOSITE	
3	2'-6"	6'-9"	MOLDED COMPOSITE	

SYML	WIDTH	HEIGHT	DESCRIPTION
1	6'-0"	5'-4"	BAYWINDOW
2	6'-0"	5'-4"	BAYWINDOW
3	6'-0"	5'-4"	BAYWINDOW



FLOOR PLAN
SCALE: 1/4" = 1'-0"

1



CITY OF TORRANCE NOTES

PLUMBING NOTES
 1. All plumbing work shall be in accordance with the City of Torrance Plumbing Ordinance, Title 16.1, and the California Plumbing Code, 2019 Edition.
 2. All plumbing work shall be installed in accordance with the City of Torrance Plumbing Ordinance, Title 16.1, and the California Plumbing Code, 2019 Edition.
 3. All plumbing work shall be installed in accordance with the City of Torrance Plumbing Ordinance, Title 16.1, and the California Plumbing Code, 2019 Edition.
 4. All plumbing work shall be installed in accordance with the City of Torrance Plumbing Ordinance, Title 16.1, and the California Plumbing Code, 2019 Edition.
 5. All plumbing work shall be installed in accordance with the City of Torrance Plumbing Ordinance, Title 16.1, and the California Plumbing Code, 2019 Edition.
 6. All plumbing work shall be installed in accordance with the City of Torrance Plumbing Ordinance, Title 16.1, and the California Plumbing Code, 2019 Edition.
 7. All plumbing work shall be installed in accordance with the City of Torrance Plumbing Ordinance, Title 16.1, and the California Plumbing Code, 2019 Edition.
 8. All plumbing work shall be installed in accordance with the City of Torrance Plumbing Ordinance, Title 16.1, and the California Plumbing Code, 2019 Edition.
 9. All plumbing work shall be installed in accordance with the City of Torrance Plumbing Ordinance, Title 16.1, and the California Plumbing Code, 2019 Edition.
 10. All plumbing work shall be installed in accordance with the City of Torrance Plumbing Ordinance, Title 16.1, and the California Plumbing Code, 2019 Edition.

ELECTRICAL NOTES

1. All electrical work shall be in accordance with the City of Torrance Electrical Ordinance, Title 16.2, and the California Electrical Code, 2022 Edition.
 2. All electrical work shall be installed in accordance with the City of Torrance Electrical Ordinance, Title 16.2, and the California Electrical Code, 2022 Edition.
 3. All electrical work shall be installed in accordance with the City of Torrance Electrical Ordinance, Title 16.2, and the California Electrical Code, 2022 Edition.
 4. All electrical work shall be installed in accordance with the City of Torrance Electrical Ordinance, Title 16.2, and the California Electrical Code, 2022 Edition.
 5. All electrical work shall be installed in accordance with the City of Torrance Electrical Ordinance, Title 16.2, and the California Electrical Code, 2022 Edition.
 6. All electrical work shall be installed in accordance with the City of Torrance Electrical Ordinance, Title 16.2, and the California Electrical Code, 2022 Edition.
 7. All electrical work shall be installed in accordance with the City of Torrance Electrical Ordinance, Title 16.2, and the California Electrical Code, 2022 Edition.
 8. All electrical work shall be installed in accordance with the City of Torrance Electrical Ordinance, Title 16.2, and the California Electrical Code, 2022 Edition.
 9. All electrical work shall be installed in accordance with the City of Torrance Electrical Ordinance, Title 16.2, and the California Electrical Code, 2022 Edition.
 10. All electrical work shall be installed in accordance with the City of Torrance Electrical Ordinance, Title 16.2, and the California Electrical Code, 2022 Edition.

FLOOR PLAN
ROOF PLAN
ELECTRICAL PLAN

JOE DOE
0907 W. HOUSE AVE
TORRANCE, CA.

Los Angeles Harbor College
Architecture Drafting Department
111 Figueroa Pl.
Wilmington, CA 90744

SHEET NUMBER
A-2.1

Approved By

DATE
03/18/2014

DESIGNED BY
SEAN HALL