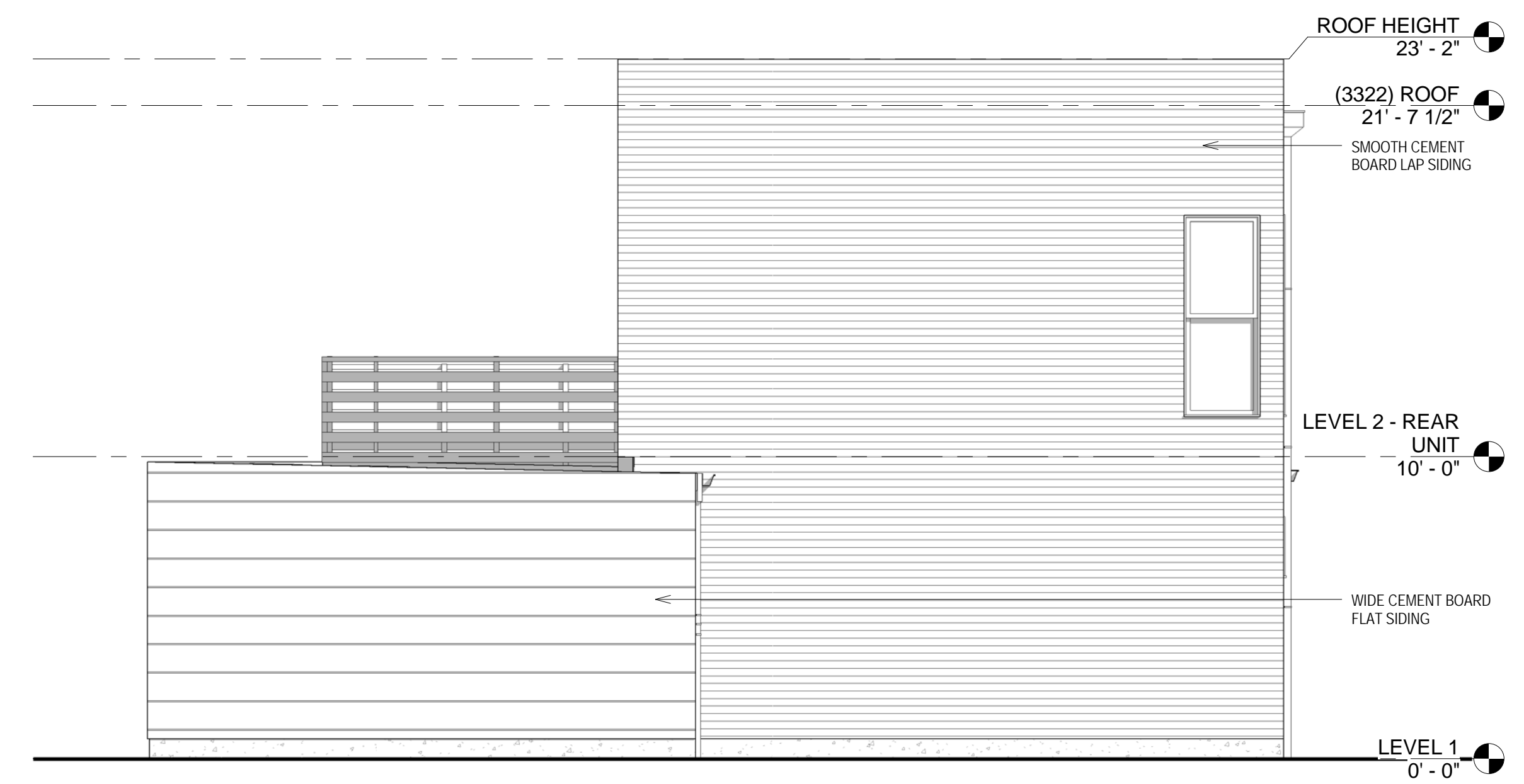
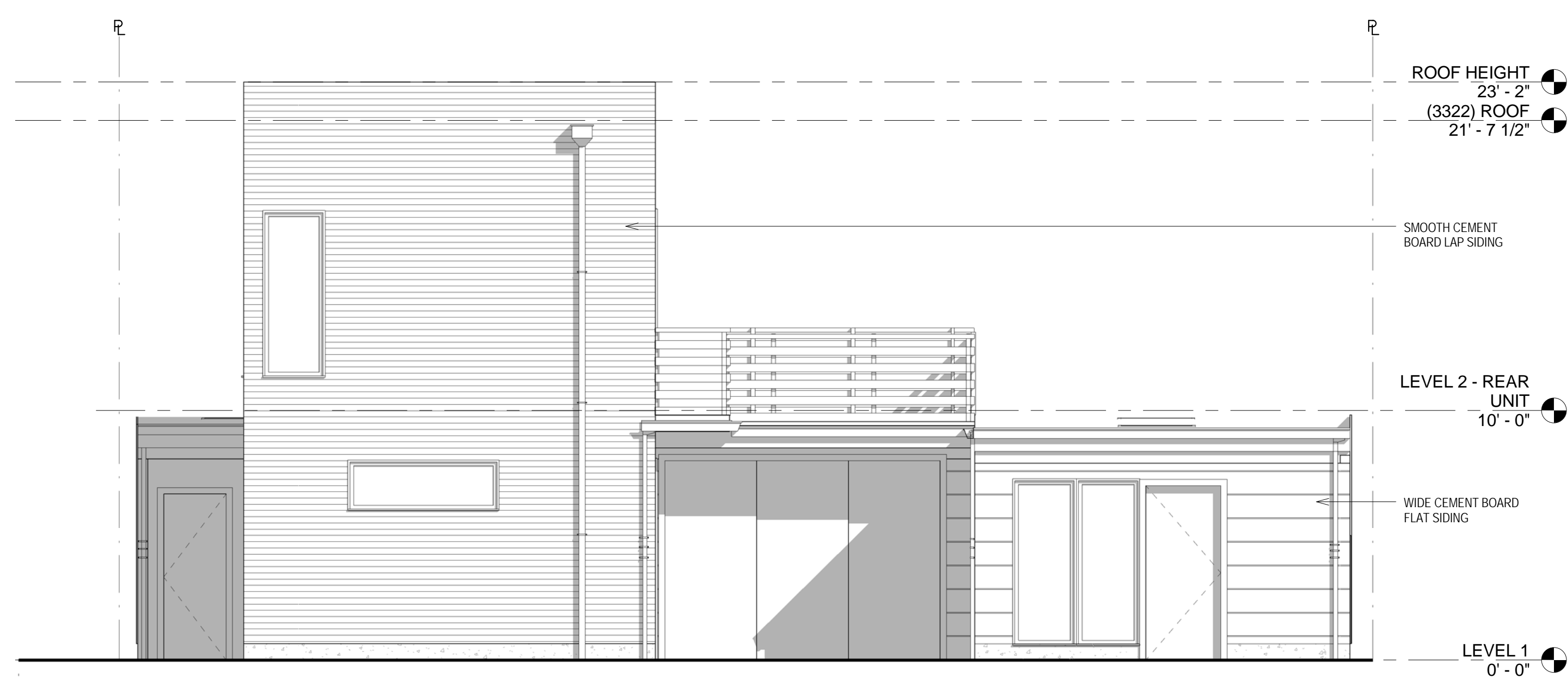


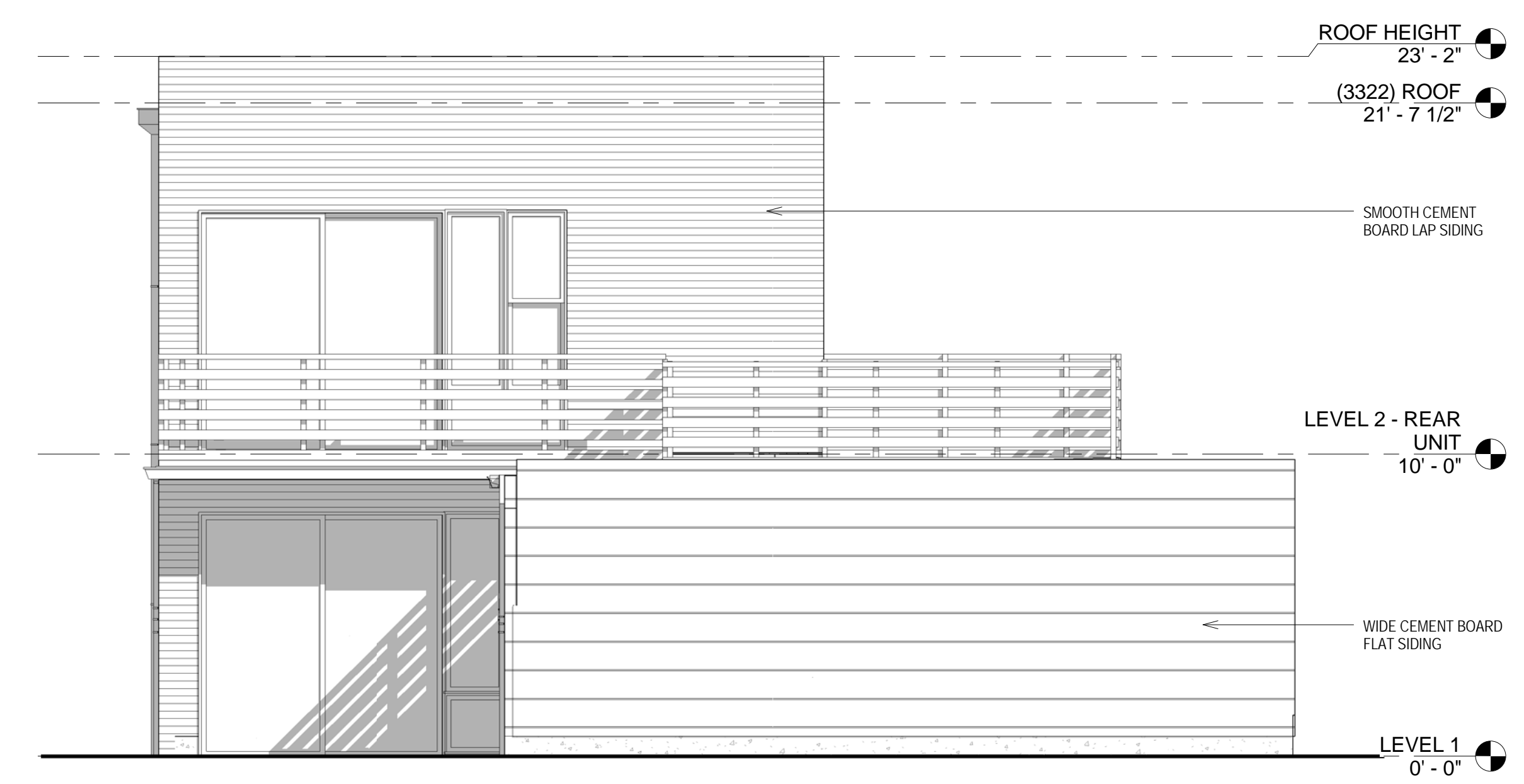
4 (3322) (P) EAST ELEVATION
SCALE: 1/4" = 1'-0"



2 (3322) (P) NORTH ELEVATION
SCALE: 1/4" = 1'-0"



3 (3322) (P) WEST ELEVATION
SCALE: 1/4" = 1'-0"



1 (3322) (P) SOUTH ELEVATION
SCALE: 1/4" = 1'-0"