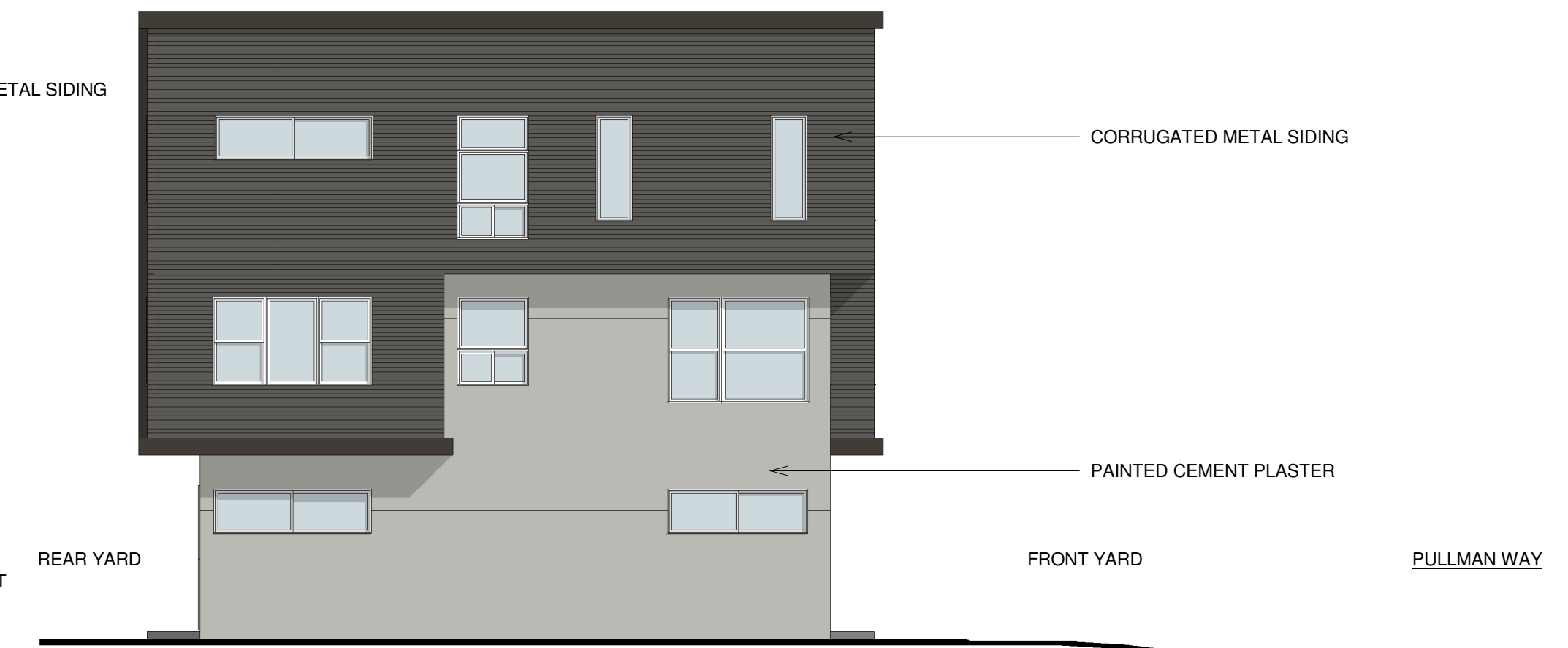




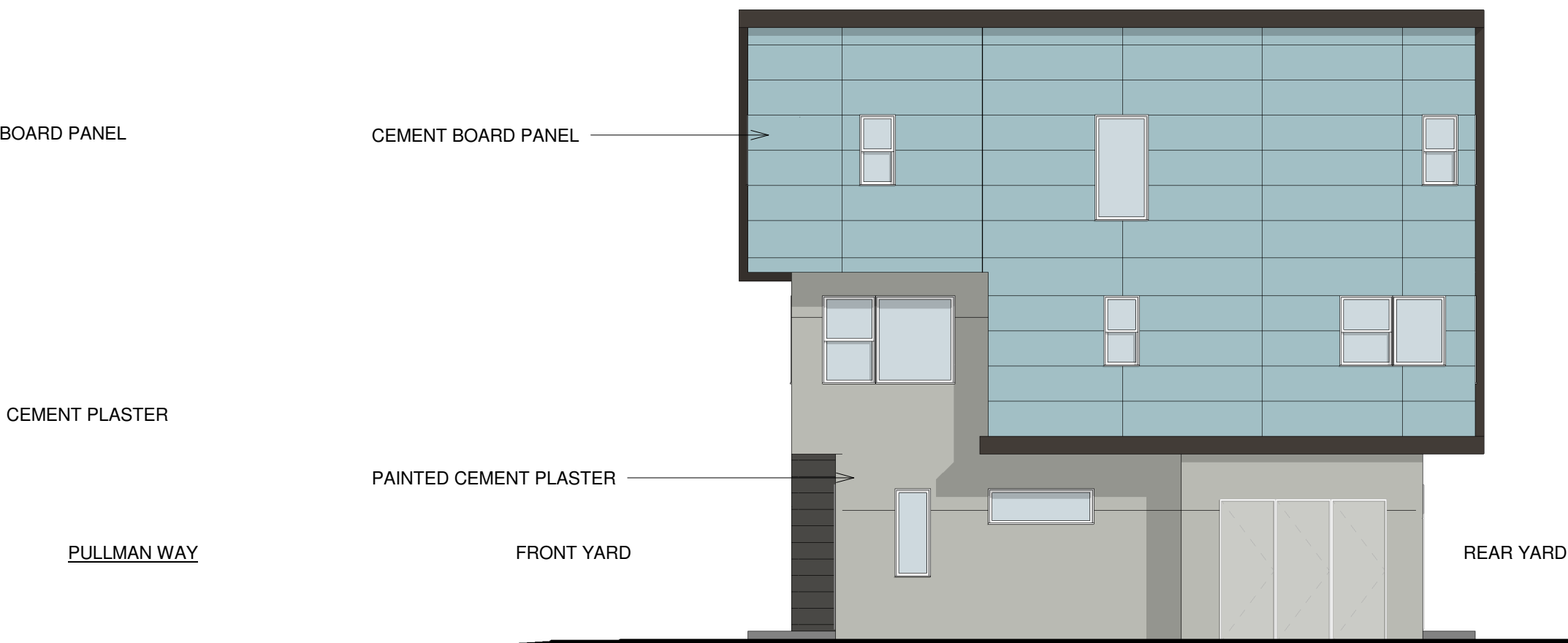
**1** BUILDING 1 - WEST ELEVATION  
SCALE: 1/8" = 1'-0"



**2** BUILDING 1 - SOUTH ELEVATION  
SCALE: 1/8" = 1'-0"



**3** BUILDING 1 - EAST ELEVATION  
SCALE: 1/8" = 1'-0"



**4** BUILDING 1 - NORTH ELEVATION  
SCALE: 1/8" = 1'-0"

