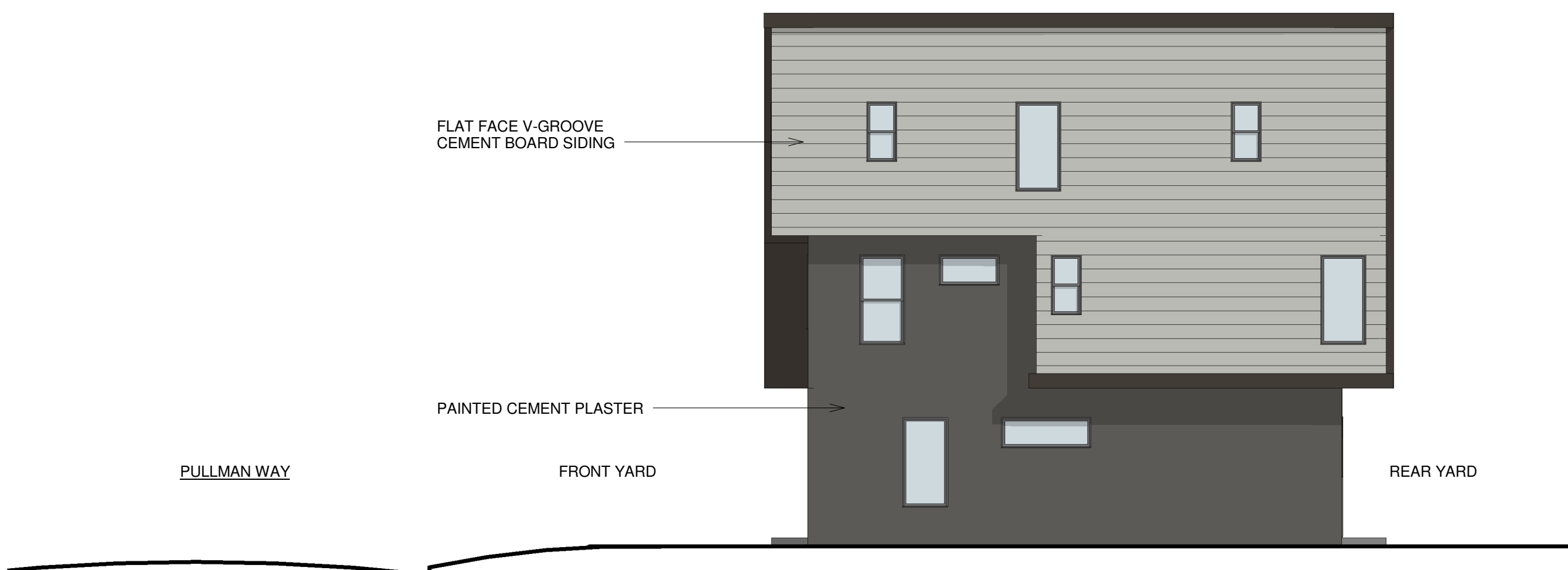
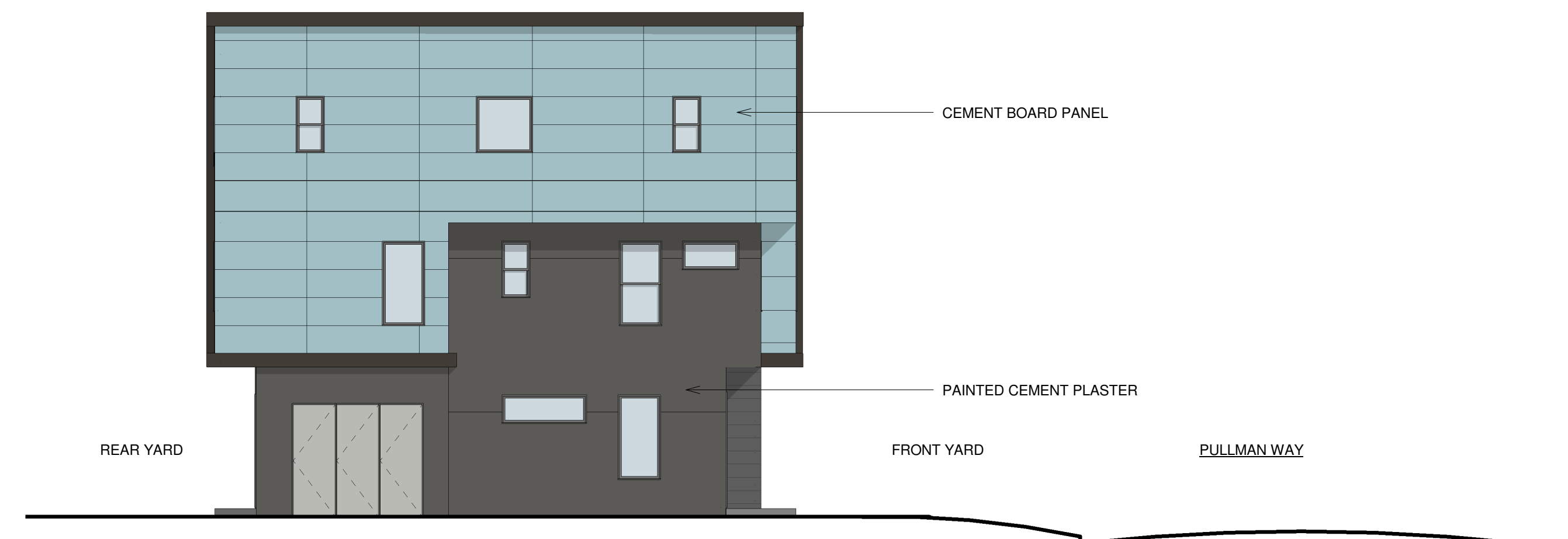




1 BUILDING 2 - WEST ELEVATION  
SCALE: 1/8" = 1'-0"



2 BUILDING 2 - NORTH ELEVATION  
SCALE: 1/8" = 1'-0"



3 BUILDING 2 - SOUTH ELEVATION  
SCALE: 1/8" = 1'-0"



4 BUILDING 2 - EAST ELEVATION  
SCALE: 1/8" = 1'-0"

