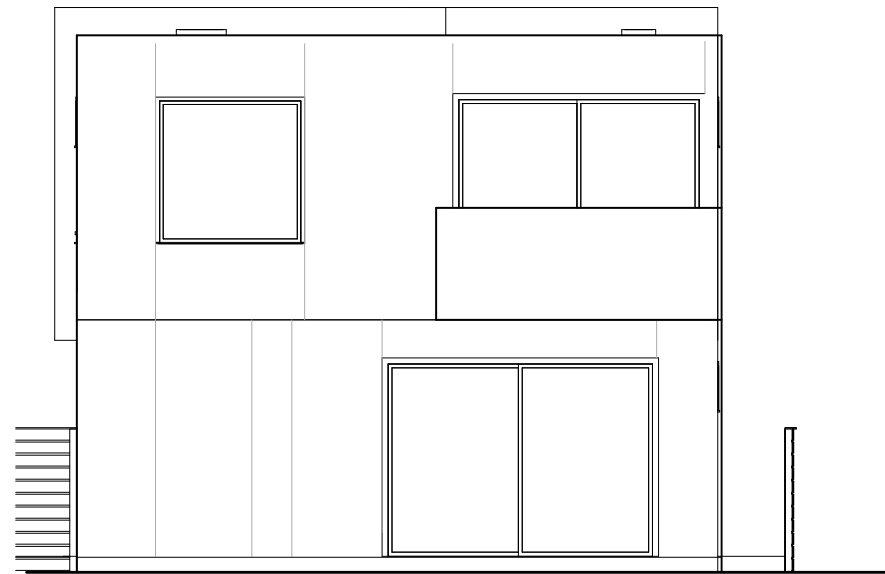
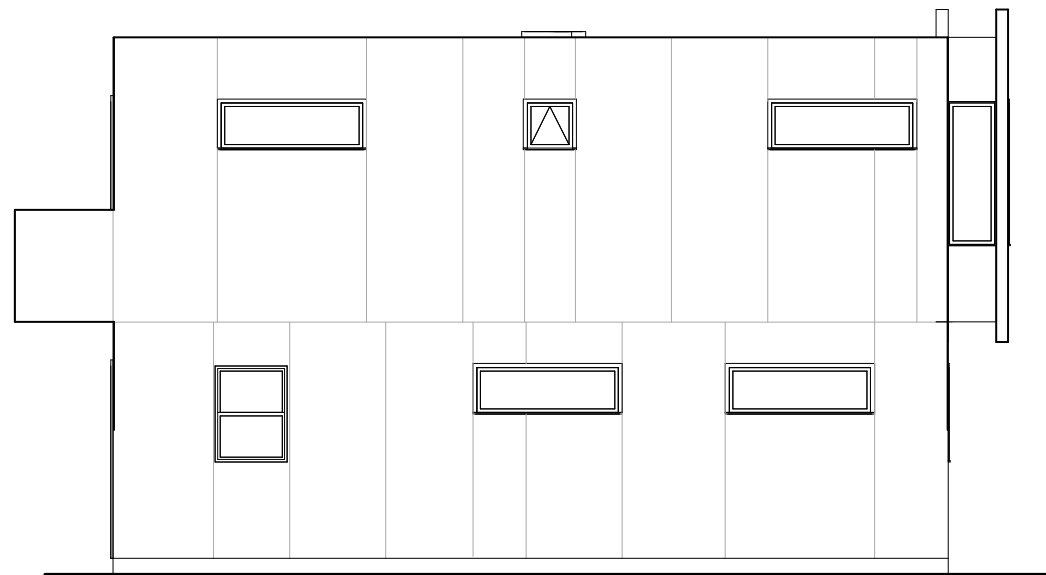


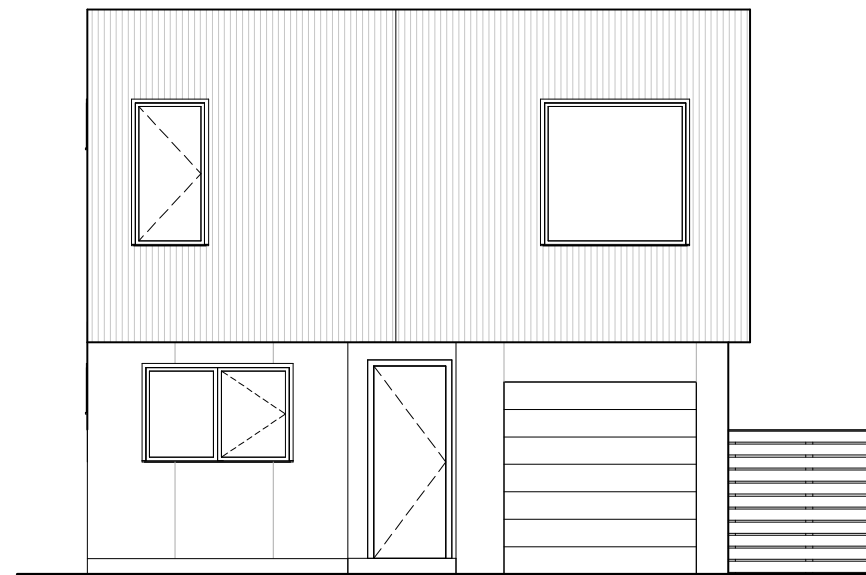
1606 WILLOW ST. - NORTH EXTERIOR  
ELEVATION  
① 1/4" = 1'-0"



1606 WILLOW ST. - EAST EXTERIOR  
ELEVATION  
④ 1/4" = 1'-0"



1606 WILLOW ST. - SOUTH EXTERIOR  
ELEVATION  
③ 1/4" = 1'-0"



1606 WILLOW ST. - WEST EXTERIOR  
ELEVATION  
② 1/4" = 1'-0"